

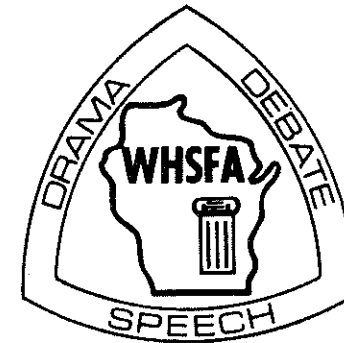
# Wisconsin High School Forensic Association Newsletter

*"Not to defeat each other, but to pace one another on the road to excellence."*

Vol. XLV

Madison, Wisconsin, September, <sup>1972</sup>~~1973~~

No. 1



WISCONSIN HIGH SCHOOL FORENSIC ASSOCIATION

LOWELL HALL, 610 LANGDON STREET

MADISON, WISCONSIN 53706

affiliated with

UNIVERSITY OF WISCONSIN - EXTENSION

Drama (1973)      Debate (1974)      Speech (1974)

BOARD OF CONTROL

Chairman of the Board: Mr. J. C. Gillmann, Marathon (until Oct. 19, '73)  
V.-Chairman of the Board: Mr. N. F. Panzenhagen, Cadott (until Oct. 19, '73)  
Advisor in Speech: Professor Pauline Isaacson, UW - Stevens Point  
Advisor in Drama: Professor Calvin Quayle, UW - Eau Claire

## TABLE OF CONTENTS

Introduction . . . . .	1
PART I: THE BOARD OF CONTROL. . . . .	3
PART II: THE STATE OFFICE . . . . .	6
PART III: SCHOOLS AND STUDENTS. . . . .	8
DRAMA: The State Contest. . . . .	8
DRAMA: Sectional Contests . . . . .	22
DRAMA: District Contests. . . . .	23
DRAMA: Summary of Participation, 1972-73. . . . .	25
DEBATE: The State Tournament. . . . .	28
SUMMARY OF STATE DEBATE TOURNAMENT 1972-73 . . . . .	34
DEBATE: Sectional Tournament Results. . . . .	36
DEBATE: Summary of District Tournaments . . . . .	37
DEBATE: Summary of Participation, 1972-73 . . . . .	39
SPEECH: The State Contest . . . . .	42
Extemporaneous Speaking. . . . .	42
Four Minute-Speech . . . . .	44
Oratory. . . . .	47
Public Address . . . . .	50
Significant Speeches . . . . .	52
Declamation. . . . .	54
Poetry Reading . . . . .	57
Prose Reading. . . . .	60
Play Acting. . . . .	63
SPEECH: Summary of Participation, 1972-73 . . . . .	72
Non-WHSFA Events . . . . .	75
PART IV: CALENDAR INFORMATION . . . . .	76
PART V: PROFESSIONAL INTEREST . . . . .	82

## Introduction

The 1973-74 school year will include some significant changes in WHSFA publications.

The publication formerly entitled the Contest Handbook has been re-named the Teachers' Manual. The Teachers' Manual will include all the information relevant to the organization which the teacher needs to function within the WHSFA. Thus, the constitution and other organizational information formerly contained in Newsletters has been transferred to the Teachers' Manual, as has the WHSFA Play List. Each member school will receive three copies of the Teachers' Manual in the fall. Each teacher supervising drama, debate, or speech activities is advised to secure a copy for his or her own use.

The Newsletters will also change. For one thing, there will be three Newsletters issued each year instead of four as in years past. Also, we hope to change the focus of Newsletters to more timely and newsworthy information.

This current issue of the fall Newsletter will, as in the past, report the results of the entire 1972-73 contest year. However, it is hoped that subsequent reports of contest results can be published at a time more nearly proximate to the contest itself. Thus, the winter issue of the Newsletter, published in December or January, will have full results of the drama contest series. The spring issue, published in March, will have a full report of the debate contest series. The fall issue will contain a full report of the preceding spring speech contests. In addition, we hope that each issue will find room for feature material on WHSFA member schools and their students.

The overall plan for each issue of the Newsletter is to provide for a five-part organizational division. Part I will report news from the Board of Control; such items as reports of Board meetings and election results would be included. Part II will review recent activities of the State office; this would include such items as a report on the annual meeting of the NUEA Committee on Discussion and Debate, answers to frequently asked questions, or changes in personnel at the State office. Part III, hopefully the biggest section, will be devoted to schools and students; in addition to reporting contest results, we hope this section can include feature material (sample titles: "The smallest school at the state drama contest"; "The largest debate program in Wisconsin"). Part IV will contain calendar information of relevance to member schools; while the Teachers' Manual will have official WHSFA dates, including the five-year calendar, this section of the Newsletter will be devoted to invitational contests and tournaments, special programs sponsored by the State's colleges and universities, and meetings of professional organizations. Part V will be a "professional" section; it will consist variously of articles or book reviews, or from time to time, it could even be a forum section in which teachers or students from member schools express particular points of view.

All changes in WHSFA publications reported here are to be regarded as tentative; we are currently in the process of change. Therefore, all comments about alterations already made or suggestions for future issues are most welcome.

## PART I: THE BOARD OF CONTROL

### May Board Meeting

The regular meeting of the WHSFA Board of Control was held on May 3-4, 1973, at the Holiday Inn #1 in Madison. Abstracted from the minutes of that meeting are the following items:

- Passed: That the WHSFA Board of Control will meet jointly with the Boards of Control of the Wisconsin Interscholastic Athletic Association and the Wisconsin School Music Association in Stevens Point on October 20, 1973; the fall meeting of the WHSFA Board will be in Stevens Point on October 19; that at future joint meetings with the Boards of the WIAA and WSMA, the WHSFA will be represented by a committee of delegates.
- Ratified: Changes in the WHSFA constitution calling for election of Board members in the spring rather than the fall and changing the membership year to run from June 1 to May 31.
- Passed: A new general rule (General Rule 19) providing that advisors in Speech and Drama be appointed by the Board for specific three-year terms.
- Passed: That the WHSFA publication, Calendar of Speech Events and Directory of Speech Departments be discontinued; that the number of WHSFA Newsletters be reduced to three; that the Secretary-Treasurer revise WHSFA publications.
- Denied: A request from Wisconsin Heights High School to transfer to the Whitewater District.
- Passed: That students not receiving an "A" at District spring speech contests be awarded a Certificate of Achievement (recommended by Contest Study Committee).
- Passed: That the Contest Study Committee be expanded to include a representative each from the Wisconsin Debate Coaches Association and the Wisconsin Forensic Coaches Association (recommended by the Contest Study Committee).
- Passed: That rules 6, 7, and 8, Supplementary Rules for Drama, be eliminated (recommended by Contest Study Committee; see WHSFA Teachers' Manual for up-to-date drama rules).
- Passed: A format for cross-examination debate (recommended by Contest Study Committee; see Teachers' Manual, Supplementary Rules for Debate III. 4).
- Passed: That the Secretary-Treasurer design a new WHSFA debate ballot which would include a numerical point scale for the evaluation of debaters and teams (recommended by the Contest Study Committee).

Recommended: That the Secretary-Treasurer draft a WHSFA position statement on the problem of misuse of evidence in debate for the Board's consideration at the next meeting (recommended by the Contest Study Committee).

Recommended: That the Secretary-Treasurer, time permitting, conduct a survey of WHSFA debate schools regarding attitudes on various matters related to the WHSFA debate contest series (recommended by the Contest Study Committee).

Passed: Changes in the Declamation contest (recommended by the Contest Study Committee--see Teachers' Manual, Supplementary Rules for Declamation).

Recommended: That the Secretary-Treasurer appoint committees of interested high school teachers to develop new contest possibilities as they are suggested.

Passed That each Sectional Chairman conduct a coaching and judging clinic early in the school year.

#### 1973 Elections

During May 1973, elections were held for three WHSFA District Chairmanships and one Sectional Chairmanship. Elected to three-year terms on the Board of Control were:

Superior District: Frank Cirilli, Superior Senior High School  
(re-elected on primary ballot)  
Kenosha District: James Highland, Union Grove High School  
Stevens Point  
District: Edsel Vergin, Mosinee Public Schools  
Northern Section: R. M. Duesterbeck, Durand High School

#### Board Retirements

Four members of the WHSFA Board of Control retired from the Board at the end of the 1973 school year. Three retirees chose not to run for re-election; they were: J. C. Gillmann, Chairman of the Stevens Point District and Chairman of the Board of Control for several years; Marylou Patterson, Chairman of the Northern Section; and Paul Ussel, Chairman of the Kenosha District. In addition, Mr. N. F. Panzenhagen, Chairman of the Eau Claire District, retired from the Board with one year remaining on his term.\*

The retiring Board members account for a great many years of devoted service to the WHSFA. A special recognition program for these former Board members will be held in conjunction with the fall Board meeting.

\*Mr. Bernard H. Bennett, Superintendent of Schools at Cornell, has been appointed by the Board of Control to fulfill the remainder of Mr. Panzenhagen's term.

The winter issue of the WHSFA Newsletter will feature them and their contributions.

#### 1974 Elections

In the spring of 1974, the State office will conduct elections for the chairmanship of the Southern Section, the Eau Claire District, the La Crosse District, the Milwaukee District, and the River Falls District.

## PART II: THE STATE OFFICE



### Lois Sheehan Retires

On June 29, 1973, Mrs. Lois Sheehan retired from her job as Administrative Secretary in the Department of Communication Arts, University of Wisconsin - Extension. The major portion of her duties with University Extension was to serve as office secretary for the Wisconsin High School Forensic Association. The photograph above was taken at her retirement luncheon on June 15.

Mrs. Sheehan first began to serve the Association in 1944. During her tenure the office changed campus locations three times and she served under four secretary-treasurers.

Throughout all the changes, no one has ever come to know the detailed operation of the Association as well as Mrs. Sheehan. She was quite capable of anticipating problems and needs and would often take the initiative in getting necessary things done without waiting for "orders."

It was customary for Mrs. Sheehan's supervisors to award her the highest possible rating on the annual official employee evaluation report. In each of the recent few years, the WHSFA Board of Control extended a special commendation to Mrs. Sheehan for her thoroughness and accuracy in maintaining the financial records of the association.

Mrs. Sheehan will be sorely missed by the State office and by the Association at large. We wish her many years of well-deserved happiness in her retirement.

## FINANCIAL STATEMENT

Cash balance on hand June 30, 1973 . . . . . \$10,920.15

Receipts	
Dues . . . . .	\$24,210.00
Sales of Materials . . . . .	253.20
State Drama Contest Registrations . . . . .	665.00
State Debate Contest Registrations and Meals . . . . .	952.50
State Speech Contest Registrations . . . . .	10,125.00
Reimbursement - Board Stationery . . . . .	<u>314.05</u>

\$36,519.75

Disbursements . . . . .	
Material for Sale and Distribution . . . . .	1,127.50
NUEA Convention (delegate expense) . . . . .	266.08
Printing . . . . .	4,897.60
Board and Committee Expense . . . . .	3,112.47
State Drama Expense . . . . .	1,058.88
State Debate Expense . . . . .	1,903.51
State Speech Expense . . . . .	5,068.34
Supplies . . . . .	436.99
Duplicating . . . . .	774.90
Bonding . . . . .	31.00
Postage . . . . .	1,744.57
Miscellaneous . . . . .	<u>100.00</u>

\$20,521.84

15,997.91

Interest earned . . . . . 689.85

Cash balance July 1, 1973 . . . . . \$27,607.91

Bill Payable	
University Extension	\$10,385.18
(Paid July 6, 1973)	

We have examined the records of the Wisconsin High School Forensic Association and find that they fairly present the financial position on June 30, 1973.

Gordon C. Behling, Associate Director	George M. Buckingham, Director
Administrative Services	Student Services
University Extension	Whitewater Public Schools
The University of Wisconsin	WHSFA Board of Control Member

# PART III: SCHOOLS AND STUDENTS

## DRAMA: The State Contest

The State Drama Contest was held at the University of Wisconsin - Stevens Point on December 1-2, 1972. The next few pages report the results earned by the twenty-one participating schools.

### CEDARBURG--A

"The Diary of Adam and Eve"  
Jerry Beck and Sheldon Harnick

Locale: Eden

Time: Saturday, June 1st

Director: Mr. Dennis Uhlig

Student Director: Jon Aleckson

Adam . . . . . Dave Maier  
Eve. . . . . Jacquie Fox  
Snake. . . . . Rod Piechowski

Stage Manager. . . . . Linda Whitburn  
Crew - Mona Massaro, Terry Hanrahan, Mark Jensen, Brad Kelly,  
Bob Stengel, Sue Thompson

Props. . . . . Cathy Lloyd, Chris Jones  
Lights . . . . . Jill Curley, Whit Lehnberg  
Sound. . . . . Jon Aleckson, Scott Smieja  
Make-up. . . . . Deb Woeckner, Nancy Aleckson, Carole Stecker, Mary Surinak

### NEENAH ARMSTRONG--A

"Once Upon a Playground"  
Jack Frakes

Locale: A Playground

Time: 1960's

Director: Mr. James Mueller

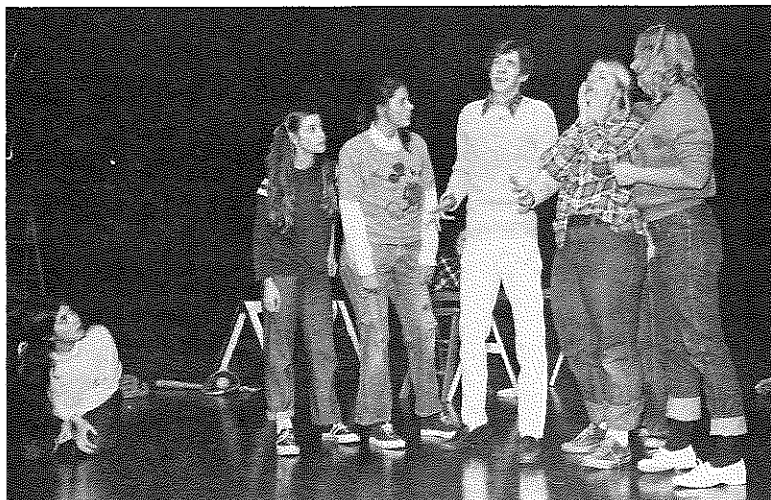
Student Director: Lynn Keyes

Wanda Bunn . . . . . Karen Bunke  
Tootie Shoe. . . . . Tina Spoehr  
Didi Fee . . . . . Jody Brehmer  
Forda Moore. . . . . Kay Harding  
Phoebe Dive. . . . . Jean Stebbins  
Dixie Wicks. . . . . Debbie Schmidt  
Flirt Stevens. . . . . Ivy Brezina  
Georgie. . . . . Tobin Mueller  
The Girl . . . . . Lynn Vandergeeten  
The Boy. . . . . Craig Mosurinjohn

Stage Manager. . . . . Lynn Keyes  
Crew - Kathy Cummers, Ann Evanson, Chris Glynn, Christ Kramer,  
Grant Lauterbach, Tom Mazza, Marge Neubauer, Joann Rausch



Jacquie Fox, as Eve, and Dave Maier, as Adam, in a scene from Cedarburg High School's presentation, "The Diary of Adam and Eve." The play was awarded an "A" by the judges at the 1972 State Drama Contest.



Neenah Armstrong's production of "Once Upon a Playground" by Jack Frakes was awarded an A rating at the 1972 State Drama Contest. Pictured above are Jean Stebbins, Ivy Brezina, Kay Harding, Tobin Mueller, Debbie Schmidt, and Jody Brehmer.

# SCHOFIELD D. D. EVEREST--A

## "The Marriage Proposal"

Anton Chekov

Locale: Russian Countryside

Time: Turn of Century

Director: Ms. Mary Payant

Student Director: Dan Nolan

Stephan Stepanovitch Tchubukov . . . . .	Jesse Hoover
Natalya Stepanovna . . . . .	Kim Shulta
Ivan Vassilyevitch Lomov . . . . .	Gary Goytowski

Stage Manager. . . . .	Therese Zygarlicki
Lights . . . . .	Todd Reetz

# WAUWATOSA WEST--A

## "Whisper Into My Good Ear"

William Hanley

Locale: A Park in the Winter

Time: Present

Director: Mr. Dan Stahmer

Max. . . . .	Pete Jacobs
Charley. . . . .	Tony Selestow

Stage Manager. . . . .	Bill Held
Technical Crew - Sue McMahon, Chuck Woody, Chris Schultz, Mary Goodnetter, Herb Hinstorf, Gary Bennett	

# WHITEFISH BAY--A

## "A Thurber Carnival"

James Thurber

Locale: No Particular Locale

Time: The Present

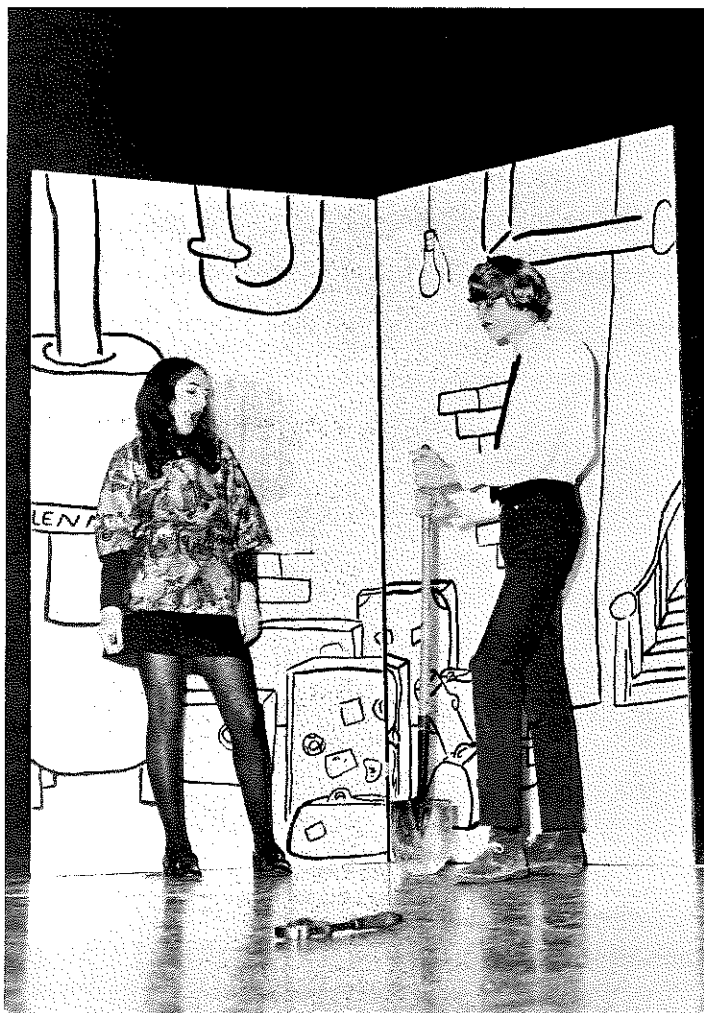
Director: Mrs. Mercedes Chalmers

## Company of Players

John Stern	Lisa Quiery
Wes Brown	Barb Friedrich
Steve Peck	Evelyn Gregor
John Massey	Debby Kraft
Drew Wynne	Cathy Kochifos
Jill Old	

(Continued page 13)





Whitefish Bay's production of "A Thurber Carnival" received an A rating at the 1972 State Drama Contest. The picture was provided by the Director, Mrs. Mercedes Chalmers, who accepted the invitation extended to all top-award schools to send in a photo of a scene from their plays. Pictured above are Lisa Quiery and Wes Brown in "Mr. Preble Gets Rid of His Wife."

## WHITEFISH BAY Continued

Stage Manager. . . . . Mike Salomon  
 Music. . . . . Susie Levings, Larry Pentler, John Schimek  
 Props. . . . . Francee Silver  
 Make-up. . . . . Betsy Eaton, Mary Mahler  
 Crew - Nancy Heyerdahl, Marcia Tank, David Glenn, Judy Ryerson,  
       Renee Ziwald, Mitch Lewis  
 Lighting. . . . . Bob Whitcomb, John C. Wilson  
 Scenery Artist. . . . . Betsy Schmitt  
 Technical Director. . . . . Frank Laycock

## WHITEWATER--A

"Where Have All the Lightning Bugs Gone?"

Louis Catron

Locale: A Park

Time: Any Time

Director: Mrs. Virginia Newcomb

Girl. . . . . Renie Cain  
 Boy. . . . . Dean Dunne

Stage Manager. . . . . Ron Hull  
 Scene Construction. . . . . Mary Morphew  
 Sound. . . . . Scott Manley  
 Lighting. . . . . Jean Knuteson  
 Music. . . . . Created by David Kruchoski

## ALGOMA--B

"The Stolen Prince"

Dan Totheroh

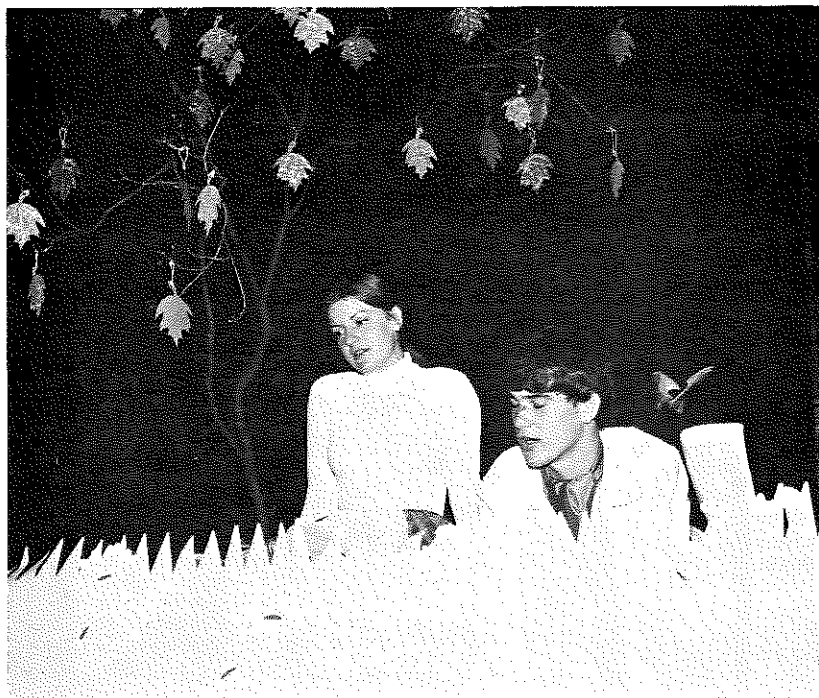
Locale: China

Director: Mr. D. W. Loos

Student Director: Sally March

The Chorus (Narrator). . . . . Bill Leahy  
 The Property Man. . . . . Steve Entringer  
 Long Fo. . . . . Mickey Schwedler  
 Wing Lee. . . . . Kay Schwedler  
 Long Fo (9 yrs. later). . . . . Denis Schinderle  
 Wing Lee (9 yrs. later). . . . . Lisa Naze  
 The Royal Nurse. . . . . Carole Gorz  
 Hi Tee. . . . . Craig Bero  
 Li Mo. . . . . Jamie Guth  
 Joy. . . . . Jon Koehler  
 First Soldier. . . . . Pat Phillips  
 Second Soldier. . . . . Lee Koehler  
 The Executioner. . . . . Robin Defnet  
 The Orchestra - Sue Gorz, Jane Haegele, Nancy Vandervest, Joan  
                   Alexander, Laura Hoppe, Ed Rutledge, Bob Knipfer,  
                   Sheree Chaudoir

(Continued page 15)



Whitewater High School entered "Where Have All the Lightning Bugs Gone?" in the 1972 State Drama Contest and received an A rating from the judges. The picture is a scene from the performance showing Girl, played by Renie Cain, and Boy, played by Dean Dunne. The play was directed by Virginia Newcombe.

# ALGOMA Continued

Members of the Royal Court - Ron Peot, Lee Feuerstein, Joel Koch, Mike Knipfer, John Curtin, Cindy Schmitt, Kim Palazzo, Linda Gabriel, Melanie Martin, LuAnn Harmann, Joan Blaha, Amy Groessl, Karen Naze, Sue McKenna, Chris Alexander

Stage Managers. . . . . Jeff and Chris Vandermeuse  
Crew - Carl Waterstreet, Mike Zastrow, Paul Rodrian, Al Vandermeuse  
Make-up Co-Chairmen . . . . . Nila Glander and Carol Danielson  
Make-up Staff - Adele Laurent, Kathy Berg, Terry Meyer, Becky Blahnik, Sue Bouche, Brenda Barnes, Heidi Harmann, Kelli Dettman, Jean Weber, Gwen Drake, Barb Vandermeuse, Pat Feuerstein  
Properties and Stage Set. . . . . Pam Karbon  
Wardrobe. . . . . Becky Blahnik, Sue Bouche

## AUGUSTA--B

"Lemonade"  
James Prideaux  
Locale: Edge of Highway  
Time: Spring  
Director: Mrs. Mary Palm

Mabel Lampston. . . . . Cindy Scott  
Edith Northrup. . . . . Malia Arries  
Lights. . . . . Gary Frase  
Sound . . . . . Terry Travis

## CADOTT--B

"Here We Are"  
Dorothy Parker  
Locale: Passenger Car on a Train  
Time: 1930's  
Director: Mr. John Butterbrodt

She . . . . . Beth Thummel  
He. . . . . Jim Haines  
Make-up . . . . . Beth Thummel  
Sound . . . . . Cindy Sperber

# EVANSVILLE--B

## "The Big Black Box"

Cleve Haubold

Locale: A Street

Time: Anytime

Director: Mr. J. Peter Shaw

Arnold. . . . . David Devlin  
The Box . . . . . Gregory Wood

Stage Crew - Kay Brunzell, Jim Miller, Lori Elmer, LaRee Fluegel

# FALL CREEK--B

## "Charley's Aunt"

Brandon Thomas

Locale: Oxford, England

Time: 1890

Director: Mr. Robert J. Carr

Student Director: Steve T. Schwoch

Brasset . . . . . B. J. Wise  
Jack Chesney. . . . . Hilary Melville  
Charles Whykeham. . . . . Dan Geske  
Lord Fancourt Babberly. . . . . James Mehls  
Sir Francis Chesney . . . . . Keevin Peuse  
Stephan Spettigue . . . . . Thom Johnson  
Donna Lucia D'Alvadorez . . . . . Anne Melville  
Amy Spettigue . . . . . Diane Scheifelbein  
Kitty Verdun. . . . . Cindy Miller  
Ela Delahay . . . . . Lori Zich

Crew - Gary Anderson, Dennis Steinke, Mark Wise, Roger Hobart  
Costumes. . . June Tumm, Sue Kuehn, Pat Schumacher, Diane Schiefelbein  
Props . . . . . Deb Olson, Julie Buchholz, Sheila Krenz

# GREEN BAY BAY PORT--B

## "The Imaginary Invalid"

Moliere (adapted by Miles Malleon)

Locale: France

Time: 17th Century

Director: Ms. Elizabeth Gorriila

Argan . . . . . John Erickson  
Toniette. . . . . Roxanne Husij  
Angelique . . . . . Lori Flaeschel  
Announcer . . . . . Glenn Roberts

(Continued page 17)

# GREEN BAY BAY PORT Continued

Stage Manager. . . . . Bob Sconzert  
Props. . . . . Mike Dvorak, Dave Devroy  
Lights . . . . . Tony Trofka, Jeff Devroy  
Costumes . . . . . Denise Rettman, Pat Gaura, Jean Gaura, Julie Drobeck  
Script . . . . . Cecile Grundman  
Make-up. . . . . Karen Koenig  
Sound. . . . . Mark Koenig

# GREENDALE--B

## "Tom Jones"

David Rogers

Locale: England

Time: 1750

Director: Mr. Ron Koehn

Tom Jones. . . . . Jeff Mitchell  
Sophia Western . . . . . Marybeth Kust  
Mr. Western. . . . . Paul Weir  
Miss Western . . . . . Jane Kaczmarek  
Partridge. . . . . Richard Chang  
Jenny Jones. . . . . Karen Wolf  
Thwackum . . . . . Brian Marus  
Square . . . . . Eugene Moschinski  
Doctor . . . . . Kurt Barger  
Captain Blifil . . . . . Andy Fischbach  
Bridget Allworthy. . . . . Lynn Repech  
Squire Allworthy . . . . . Doug Maurer  
Deborah. . . . . Jody Jensen  
Blifel . . . . . Dave Bonk  
Honour . . . . . Wendy Horton  
Justice Dowling. . . . . Kerry Hays  
Maid . . . . . Lori Campbell

Stage Crew - Mike Warber, Paul White, Paul Placek, Mike Treske,  
Mark Hesser, Joe Schultz, Guy Barger, Kevin Smith

Production Secretary . . . . . Kathy Hale

Make-up and Costumes - Debbie Ristau, Kathy Worzolla, Debbie Skack,  
Cindy Bauer, Karen Kovacic, Marilyn Pranke,  
June Yager, Toni Christopherson

# KENOSHA BRADFORD--B

"The Lark"

Jean Anouilh

Locale: France, The Temporary Palace of Charles, Dauphin of France

Time: 1429

Director: Mrs. Jean Hazelton

The Little Queen . . . . . Tina Curnes  
 Agnes Sorrell . . . . . Rose Anne Hopkins  
 Charles, the Dauphin . . . . . Randy Gunderson  
 Queen Yolande . . . . . Edna Ward  
 Monsieur de la Tremouille . . . . . William Frederick Belongia  
 Archbishop of Reims . . . . . Alan Petersen  
 Joan . . . . . Janine Hunter  
 Sound Technician . . . . . Jan Martin

# LOYAL--B

"Plaza Suite" Act III

Neil Simon

Locale: Suite 719, Plaza Hotel, New York

Time: The Present

Director: Mrs. Marvelene M. Butterbrodt

Student Director: David Meyer

Norma Hubley . . . . . Kathryn McNeely  
 Roy Hubley . . . . . Allen Teter  
 Borden Eisler . . . . . Thomas Dahlby  
 Mimsey Hubley . . . . . Jill Schober  
 Stage Manager . . . . . Tom Collinson  
 Crew - Arlyn Luchterhand, David Ayer, James Pachal, Steve Edwards,  
 Bruce Trampush, Randy Paschke, David Capelle, Jeff Langfeldt,  
 Barbara Ziegeweid, Bonny Harder  
 Make-up - Ann Roth, Laurie Voight, Susanne Noeldner, Cheryl Teter  
 Hair Stylist . . . . . Marilyn Erickson  
 Costumes . . . . . Sandra Delo

# MAPLE NORTHWESTERN--B

"A Thing of Beauty"

Maurice Berger

Locale: A Park

Time: Recently

Directors: Ms. Patricia Luostari

Ms. Jo Stewart

Student Directors: Nancy Johnson

Ted Johnson

Man . . . . . Jim Gustafson  
 Policeman . . . . . Kim Kesler  
 Jones . . . . . Kevin Naughton  
 Woman . . . . . Elaine Maki  
 Boy . . . . . Greg Leaf  
 Mother . . . . . Laura Heytens

Music . . . . . Jean Gustafson  
 Props - Collette Orlowski, Bob Babcock, Jon Kesler, Jeff James,  
 Loren Skow, Bill Phiby  
 Make-up - Patsy Kauther, Kym Denston, Debbie Pearson, Becky Simons  
 Costumes . . . . . Marilyn Saker, Sue Lackson

# NEW LISBON--B

"The Big Black Box"

Cleve Haubold

Locale: A Street

Time: Anytime

Director: Miss Donna J. Haugen

Student Director: Pat Clary

Arnold . . . . . Joe Ritchart  
 The Big Black Box . . . . . David Olsen  
 Stage Manager . . . . . Noel Hare  
 Crew . . . . . Teresa Turner

# ONALASKA--B

"Monica"

Pauline MacCaulay

Locale: One Room Flat

Time: Present Day

Director: Mr. Patrick J. Seely

Simon Elliott . . . . . Pete Bougie  
 Mr. Leonard . . . . . Kirk Davidson  
 Caretaker . . . . . Jeff Christianson

(Continued page 20)

# ONALASKA Continued

Stage Manager. . . . . Jack Christenson  
 Assistant Stage Manager. . . . . Blake Winters  
 Crew . . . . . Mike Johnson, Carol Baye  
 Make-up. . . Paula Mahlum, Marilyn McEuen, Jerri Thienes, Linda Marcus

# RIVER FALLS--B

"The Glass Menagerie" Part II  
 Tennessee Williams  
 Locale: Wingfield Apartment  
 Time: 1930's  
 Director: Mrs. Doris Fuka

Laura. . . . . Laura Delaplain  
 Jim, The Gentleman Caller. . . . . Marlin Thompson

Stage Managers . . . . . Peg McEwen, Carol Alexander

# SUPERIOR SENIOR--B

"Poor Aubrey"  
 George Kelly  
 Locale: Philadelphia  
 Time: Modern  
 Director: Mrs. Michele Halliday  
 Student Director: Mary Gainey

Aubrey Piper . . . . . Lyndon Knutson  
 Amy Piper. . . . . Kris Strauman  
 Marion (Brill) Cole. . . . . Nancy Harnstrom  
 Mrs. Fisher. . . . . Diane VanDamme

Stage Manager. . . . . James Abbott  
 Properties . . . . . Susan Coward  
 Make-up. . . . . Lila Frodesen  
 Costumes . . . . . Donann Bottolfsen  
 Crew - Kathy Fox, Aleta Severson, Debbie Hill, Daniel Converse,  
 Lois Jones

# VIROQUA--B

"To Burn a Witch"

James L. Bray

Locale: Salem, Massachusetts

Time: 1690

Director: Mr. Donald L. Dieter

Ruth . . . . . Nancy Haun  
 Mary . . . . . Jodi Ilstrup  
 Dame Stanley . . . . . Kris Bongers  
 Widow Jones. . . . . Barbara Sullivan

# DRAMA: Sectional Contests

## Northern Section at UW - Eau Claire

Augusta . . . . . A	Chippewa Falls Senior . . . . . B
Cadott. . . . . A	Eau Claire North. . . . . B
Fall Creek. . . . . A	Menomonee . . . . . B
Loyal . . . . . A	Port Wing South Shore . . . . . B
Maple Northwestern. . . . . A	Superior Central Junior . . . . . B
River Falls . . . . . A	Ashland . . . . . C
Superior Senior . . . . . A	

## Central Section at UW - La Crosse and St. Norbert's College

Algoma. . . . . A	La Crosse Aquinas . . . . . B
Green Bay Bay Port. . . . . A	Luxemburg-Casco . . . . . B
Neenah Armstrong. . . . . A	Manitowoc-Roncalli. . . . . B
New Lisbon. . . . . A	Marinette . . . . . B
Onalaska. . . . . A	Medford . . . . . B
Schofield D. C. Everest . . . . . A	North Fond du Lac Horace Mann . . . . . B
Viroqua . . . . . A	Oshkosh West. . . . . B
Antigo. . . . . B	St. Lawrence. . . . . B
Brussels Southern Door. . . . . B	White Lake. . . . . B
	Crandon . . . . . C

## Southern Section at Badger High School, Lake Geneva

Cedarburg . . . . . A	Lake Geneva Badger. . . . . B
Evansville. . . . . A	McFarland . . . . . B
Greendale . . . . . A	Muskego . . . . . B
Kenosha Bradford. . . . . A	New Berlin. . . . . B
Wauwatosa West. . . . . A	New Berlin Eisenhower . . . . . B
Whitefish Bay . . . . . A	Pewaukee. . . . . B
Whitewater. . . . . A	Port Washington . . . . . B
Cassville . . . . . B	Waunakee. . . . . B
Clinton . . . . . B	Monroe. . . . . C
Hamilton Sussex . . . . . B	New Glarus. . . . . C
	Union Grove . . . . . C

# DRAMA: District Contests

## Eau Claire District at Menomonee

Augusta . . . . . A	Loyal . . . . . A
Cadott. . . . . A	Menomonee . . . . . A
Chippewa Falls Senior . . . . . A	Alma Center Lincoln . . . . . B
Eau Claire North. . . . . A	Greenwood . . . . . B

## Green Bay District at Green Bay Preble

Algoma. . . . . A	Green Bay Southwest . . . . . B
Brussels Southern Door. . . . . A	Lena. . . . . B
Green Bay Bay Port. . . . . A	Niagara . . . . . B
Luxemburg-Casco . . . . . A	Oneida Sacred Heart . . . . . B
Marinette . . . . . A	Seymour . . . . . B
Appleton West . . . . . B	Suring. . . . . B
Florence. . . . . B	Pulaski . . . . . C
Green Bay Preble. . . . . B	

## Kenosha District at Muskego

Greendale . . . . . A	New Berlin Eisenhower . . . . . A
Kenosha Bradford. . . . . A	Union Grove . . . . . A
Muskego . . . . . A	Franklin. . . . . B
New Berlin. . . . . A	Mukwonago . . . . . C

## La Crosse District at UW - La Crosse

La Crosse Aquinas . . . . . A	La Crosse Logan . . . . . B
New Lisbon. . . . . A	La Farge. . . . . B
Onalaska. . . . . A	Elroy Royall. . . . . B
Viroqua . . . . . A	Sparta. . . . . B
Westby. . . . . A	

## Milwaukee District at Port Washington

Cedarburg . . . . . A	Germantown Washington . . . . . B
Hamilton-Sussex . . . . . A	Hartford. . . . . B
Pewaukee. . . . . A	Hartland Arrowhead. . . . . B
Port Washington . . . . . A	Mequon Homestead. . . . . B
Wauwatosa West. . . . . A	
Whitefish Bay . . . . . A	
Brookfield Central. . . . . B	
Brookfield East . . . . . B	

# Oshkosh District at UW Center - Sheboygan County

Manitowoc Roncalli. . . . . A	Elkhart Lake-Glenbeulah . . . . . B
Neenah Armstrong. . . . . A	Fond du Lac Goodrich. . . . . B
North Fond du Lac Horace. . . . . A	Plymouth. . . . . B
Mann	Ripon . . . . . B
Oshkosh West. . . . . A	Two Rivers Washington . . . . . B
St. Lawrence Seminary . . . . . A	
Berlin. . . . . B	

# Platteville District at UW - Platteville

Cassville . . . . . A	Iowa-Grant. . . . . B
Monroe. . . . . A	Muscoda Riverdale . . . . . B
New Glarus. . . . . A	Shullsburg. . . . . B
Albany. . . . . B	

# River Falls District at UW - River Falls

River Falls . . . . . A	Turtle Lake . . . . . B
-------------------------	-------------------------

# Stevens Point District at Nekoosa

Antigo. . . . . A	Iola-Scandinavia. . . . . B
Crandon . . . . . A	Three Lakes . . . . . B
Medford . . . . . A	Tomahawk. . . . . B
Schofield D. C. Everest . . . . . A	Weyauwega . . . . . B
White Lake. . . . . A	Wittenberg. . . . . B
Adams Friendship. . . . . B	Edgar . . . . . C
Elcho . . . . . B	Phelps. . . . . C

# Superior District at Mellen

Ashland . . . . . A	Superior Senior . . . . . A
Maple Northwestern. . . . . A	Hayward . . . . . B
Port Wing South Shore . . . . . A	Mellen. . . . . B
Superior Central Junior . . . . . A	Minocqua Lakeland . . . . . B
	Park Falls. . . . . B

# Whitewater District at UW - Whitewater

Clinton . . . . . A	Whitewater. . . . . A
Evansville. . . . . A	Delavan-Darien. . . . . B
Lake Geneva Badger. . . . . A	Monona Grove. . . . . B
McFarland . . . . . A	Oregon. . . . . B
Waukegan. . . . . A	Sun Prairie . . . . . B

# DRAMA: Summary of Participation, 1972-73

Eau Claire District . . . . . 44 Member Schools

Local	Sub-District	District	Section	State
14 Schools	14 Schools	9 Schools	7 Schools	4 Schools
148 Students	103 Students	67 Students	64 Students	52 Students
		<u>Ratings</u>	<u>Ratings</u>	<u>Ratings</u>
		7 A	4 A	4 B
		2 B	3 B	

Green Bay District. . . . . 53 Member Schools

Local	Sub-District	District	Section	State
35 Schools	35 Schools	15 Schools	4 Schools	2 Schools
358 Students	296 Students	172 Students	107 Students	72 Students
		<u>Ratings</u>	<u>Ratings</u>	<u>Ratings</u>
		5 A	2 A	2 B
		9 B	3 B	
		1 C		

Kenosha District. . . . . 39 Member Schools

Local	Sub-District	District	Section	State
6 Schools	16 Schools	8 Schools	6 Schools	2 Schools
144 Students	399 Students	127 Students	85 Students	42 Students
		<u>Ratings</u>	<u>Ratings</u>	<u>Ratings</u>
		6 A	2 A	2 B
		1 B	3 B	
		1 C	1 C	

La Crosse District. . . . . 36 Member Schools

Local	Sub-District	District	Section	State
14 Schools	13 Schools	8 Schools	4 Schools	3 Schools
57 Students	54 Students	36 Students	24 Students	20 Students
		<u>Ratings</u>	<u>Ratings</u>	<u>Ratings</u>
		4 A	3 A	3 B
		4 B	1 B	

Milwaukee District. . . . . 44 Member Schools

Local	Sub-District	District	Section	State
19 Schools	19 Schools	12 Schools	6 Schools	3 Schools
215 Students	215 Students	204 Students	88 Students	58 Students
		<u>Ratings</u>	<u>Ratings</u>	<u>Ratings</u>
		6 A	3 A	3 A
		6 B	3 B	

Oshkosh District. . . . . 38 Member Schools

<u>Local</u>	<u>Sub-District</u>	<u>District</u>	<u>Section</u>	<u>State</u>
16 Schools	15 Schools	11 Schools	5 Schools	1 School
195 Students	180 Students	117 Students	59 Students	22 Students
		<u>Ratings</u>	<u>Ratings</u>	<u>Ratings</u>
		5 A	1 A	1 A
		6 B	4 B	

Platteville District. . . . . 38 Member Schools

<u>Local</u>	<u>Sub-District</u>	<u>District</u>	<u>Section</u>	<u>State</u>
0 Schools	9 Schools	7 Schools	3 Schools	None
	47 Students	37 Students	17 Students	
		<u>Ratings</u>	<u>Ratings</u>	
		3 A	1 B	
		4 B	2 C	

River Falls District. . . . . 28 Member Schools

<u>Local</u>	<u>Sub-District</u>	<u>District</u>	<u>Section</u>	<u>State</u>
2 Schools	2 Schools	2 Schools	1 School	1 School
12 Students	12 Students	12 Students	4 Students	4 Students
		<u>Ratings</u>	<u>Ratings</u>	<u>Ratings</u>
		1 A	1 A	1 B
		1 B		

Stevens Point District. . . . . 55 Member Schools

<u>Local</u>	<u>Sub-District</u>	<u>District</u>	<u>Section</u>	<u>State</u>
30 Schools	27 Schools	14 Schools	5 Schools	1 School
168 Students	119 Students	56 Students	32 Students	6 Students
		<u>Ratings</u>	<u>Ratings</u>	<u>Ratings</u>
		5 A	1 A	1 A
		7 B	3 B	
		2 C	1 C	

Superior District . . . . . 23 Member Schools

<u>Local</u>	<u>Sub-District</u>	<u>District</u>	<u>Section</u>	<u>State</u>
11 Schools	9 Schools	9 Schools	5 Schools	2 Schools
402 Students	260 Students	219 Students	196 Students	35 Students
		<u>Ratings</u>	<u>Ratings</u>	<u>Ratings</u>
		5 A	2 A	2 B
		4 B	2 B	
			1 C	

Whitewater District . . . . . 53 Member Schools

<u>Local</u>	<u>Sub-District</u>	<u>District</u>	<u>Section</u>	<u>State</u>
14 Schools	12 Schools	10 Schools	6 Schools	2 Schools
307 Students	161 Students	196 Students	89 Students	13 Students
		<u>Ratings</u>	<u>Ratings</u>	<u>Ratings</u>
		6 A	2 A	1 A
		4 B	4 B	1 B

Totals. . . . . 465 Member Schools

<u>Local</u>	<u>Sub-District</u>	<u>District</u>	<u>Section</u>	<u>State</u>
161 Schools	171 Schools	105 Schools	53 Schools	21 Schools
2006 Students	1846 Students	1243 Students	765 Students	324 Students
		<u>Ratings</u>	<u>Ratings</u>	<u>Ratings</u>
		53 A	21 A	6 A
		48 B	27 B	15 B
		4 C	5 C	



DEBATE: The State Tournament

The 1973 State Debate Tournament was held on the campus of the University of Wisconsin - Madison on February 23-24, 1973. The tournament included three qualifying rounds for all schools entered, plus an eight-team elimination bracket for schools with a record of four wins and two losses, or better, in the qualifying rounds. All schools which did not qualify for the elimination rounds participated in two additional rounds of debate to determine award winners in the consolation bracket.

MILWAUKEE MARQUETTE--First Place  
Coach: Mr. J. M. Copeland

Affirmative  
James Jansen  
Patrick Mayer  
Alternate  
Tom McCarthy

Negative  
David Dreis  
Mark Miner  
Alternate  
Tom McCarthy

DURAND--Second Place  
Coach: Mr. R. M. Duesterbeck

Affirmative  
Rounds 1 and 3  
Patrice Unser  
Ruth Brenner  
Alternate  
Linda Oesterreicher  
Round 2  
Linda Oesterreicher  
Ruth Brenner  
Alternate  
Patrice Unser

Negative  
Rounds 1 and 3  
Mark Hintermeyer  
Mary Trettin  
Alternate  
Tom Bowman  
Round 2  
Mark Hintermeyer  
Tom Bowman  
Alternate  
Mary Trettin

SHEBOYGAN NORTH--Third Place  
Coach: Mr. T. A. Parks

Affirmative  
Charmaine Fischer  
Joanne Rohling

Negative  
Mike Holden  
Gordon Vieth  
Alternate  
Marc Bassewitz

FIRST PLACE WINNER  
MILWAUKEE MARQUETTE HIGH SCHOOL



Marquette High School debaters and their coaches display the first place plaque they were awarded at the 1973 State Debate Tournament. The Marquette debaters won the top award by qualifying for the elimination bracket and then debating in the championship competition without a defeat. Pictured above are: top row, left to right, Ken Thames (coach), James Copeland (coach), and Jim Jansen; bottom row, left to right, Mark Miner, Pat Mayer, and David Dreis.

EAU CLAIRE MEMORIAL--Third Place  
Coach: Mr. Art McMillion

Affirmative  
Rounds 1 and 2  
Debbie Hartkemeyer  
Janet Pitterle  
Alternate  
Ned Wahl  
Round 3  
Ned Wahl  
Janet Pitterle  
Alternate  
Debbie Hartkemeyer

Negative  
Dan Gerber  
David Onsted  
Alternate  
Ray Decker

OSHKOSH WEST  
Coach: Mr. Ron LaPoint

Affirmative  
Ann Unger  
Todd Murken

Negative  
Mike Palmquist  
Mark Gams  
Alternate  
Doug Nichols

MILWAUKEE PIUS XI  
Coach: Mrs. Gladys Harvey

Affirmative  
Dan Murphy  
Ralph Biernat  
Alternate  
Peggy Quinn

Negative  
Steve Conlon  
Mary Fiegel  
Alternate  
Peggy Quinn

WAUWATOSA EAST  
Coach: Mr. Robert Bearden

Affirmative  
Dave Meyers  
Mark Pennow

Negative  
Erik Dryburgh  
Alfred Equitz

BROOKFIELD CENTRAL  
Coach: Miss Dru Munson

Affirmative  
Tim Hatch  
Brian Peterson  
Alternate  
Andy Frank

Negative  
Paul Schmidt  
Tom Potter  
Alternate  
Arlene Hill

SECOND PLACE WINNER  
DURAND HIGH SCHOOL



Pictured above are the Durand High School debaters and their coach, Mr. R. M. Duesterbeck. The Durand squad achieved second-place honors at the 1973 State Debate Tournament by qualifying for the elimination rounds and winning the quarter-final and semi-final rounds in the championship bracket. Those pictured are: top row, left to right, Mary Trettin, Mark Hintermeyer, Tom Bowman, Mr. Duesterbeck; bottom row, left to right, Patrice Unser, Linda Oesterreicher, Ruth Brenner.

BROOKFIELD EAST  
Coach: Miss Joyce A. Seiser

Affirmative  
Karen Alexander  
Paul Kent  
Alternate  
Mark Crego

Negative  
Donna Benthien  
Jim Losse  
Alternate  
Mark Crego

OCONOMOWOC SENIOR  
Coach: Mr. D. Rupnow

Affirmative  
Becky Woods  
Cathy Miller  
Alternate  
Julie Mengel

Negative  
Sarah Frank  
Ann Pulkownic  
Alternate  
Tom Neumann

MERRILL  
Coach: Miss Mary Shafer

Affirmative  
Mary Jo MacSwain  
Marilyn Hodgson  
Alternate for 1 and 3  
Camille Townsend  
Alternate for 2  
Bill Adams

Negative  
Joan Weber  
David Severt  
Alternate  
Jill Lambrecht

NICOLET  
Coach: Mr. Ronald Ernst

Affirmative  
Robert Shulkin  
Jed Dolnick  
Alternate  
John Uelman

Negative  
Evan Johnson  
Jeffrey Wagner  
Alternate  
Phil Pomerance

RHINELANDER  
Coach: Mr. John D. Fortier

Affirmative  
Pat Dunlap  
Mark Friedle  
Alternate  
Karen Marquardt

Negative  
David Vanney  
Steve Erbs  
Alternate  
David Nevin

EAU CLAIRE NORTH SENIOR  
Coach: Mrs. Kathryn Gerkey

Affirmative  
Greg Irwin  
Becky Van Den Huevel  
Alternate  
Toni Johnson

Negative  
Jay Nispel  
Chris Cooper

GREENFIELD  
Coach: Mr. Frank Schnackenberg

Affirmative  
Wayne Sander  
Gary Ruesch

Negative  
Gary Wendt  
Rick Esenberg  
Alternate  
Bob Kazmarek

OCONTO FALLS  
Coach: Mr. Don A. Rex

Affirmative  
Teresa Cribb  
Greg Cribb  
Alternate  
Lyn Scheffdore

Negative  
Victor Bast  
Ken Saffran  
Alternate  
R. J. Brehmer

WAUSAU EAST  
Coach: Mr. Dennis O'Flyng

Affirmative  
Dave Piehler  
Jane Leonard  
Alternate  
Sue Onopa

Negative  
Jan Oldenburg  
Carl Backer  
Alternate  
Sue Onopa

# SUMMARY OF STATE DEBATE TOURNAMENT 1972-73

## Qualifying Rounds

	Won	Lost		Won	Lost
Milwaukee Marquette . . . . .	6	0	Oconomowoc Senior . . . . .	3	3
Durand . . . . .	5	1	Merrill . . . . .	2	4
Sheboygan North . . . . .	5	1	Nicolet . . . . .	2	4
Eau Claire Memorial . . . . .	4	2	Rhineland . . . . .	2	4
Oshkosh West . . . . .	4	2	Eau Claire North . . . . .	1	5
Milwaukee Pius XI . . . . .	4	2	Greenfield . . . . .	1	5
Wauwatosa East . . . . .	4	2	Oconto Falls . . . . .	1	5
Brookfield Central . . . . .	3	3	Wausau East . . . . .	1	5
Brookfield East . . . . .	3	3			

## Quarter-final Round

	Won by	Decision
Milwaukee Marquette vs. Bye . . . . .	Marquette . . . . .	
Sheboygan North (Neg) vs. Pius 1 (Aff)	Sheboygan North . . . . .	3 - 0
Durand (Aff) vs. Oshkosh West (Neg) . .	Durand . . . . .	3 - 0
Wauwatosa East (Aff) vs. Eau Claire Memorial (Neg) . . . . .	Eau Claire Memorial . . . . .	2 - 1

## Semi-final Round

	Won by	Decision
Marquette (Neg) vs. Sheboygan North (Aff) . . . . .	Marquette . . . . .	3 - 0
Durand (Neg) vs. Eau Claire Memorial (Aff) . . . . .	Durand . . . . .	2 - 1

## Final Round

	Won by	Decision
Marquette (Aff) vs. Durand (Neg) . . . . .	Marquette . . . . .	16 - 1

## Consolation Series

(Win-Loss record includes qualifying rounds plus two additional rounds) Brookfield Central was winner of the consolation series. Brookfield East was second and Oconomowoc was third. The tie between the two schools was broken on the strength of opponents' records.

(Continued page 35)

	Won	Lost		Won	Lost
Brookfield Central . . . . .	7	3	Eau Claire North . . . . .	3	7
Brookfield East . . . . .	5	5	Merrill . . . . .	3	7
Oconomowoc . . . . .	5	5	Nicolet . . . . .	3	7
Greenfield . . . . .	4	6	Oconto Falls . . . . .	3	7
Wausau East . . . . .	4	6	Rhineland . . . . .	2	8

# DEBATE: Sectional Tournament Results

## Northern Section at Eau Claire Memorial

	Won	Lost		Won	Lost
Eau Claire Memorial	6	0	Chippewa Falls McDonell	1	5
Durand	5	1	Chippewa Falls Senior	1	5
Eau Claire North	4	2	Superior	1	5
Amery	3	3			

## Central Section at UW - Stevens Point

	Won	Lost		Won	Lost
Oconto Falls	6	0	Kimberly	2	4
Rhineland	6	0	La Crosse Aquinas	2	4
Merrill	5	1	Luxemburg-Casco	2	4
Oshkosh West	4	2	Appleton West	1	5
Sheboygan North	4	2	La Crosse Logan	0	6
Wausau East	4	2	New London	0	6
Onalaska	3	3			
Wausau West	3	3			

## Southern Section at Lake Geneva Badger

	Won	Lost		Won	Lost
Milwaukee Marquette	6	0	Middleton	3	3
Brookfield Central	5	1	Slinger	3	3
Brookfield East	5	1	Watertown	3	3
Greenfield	4	2	Kenosha Tremper	2	4
Milwaukee Pius XI	4	2	Madison Edgewood	2	4
Nicolet	4	2	Monona Grove	2	4
Oconomowoc	4	2	Milwaukee James Madison	2	4
Wauwatosa East	4	2	Waukesha	1	5
Hartford	3	3	Madison LaFollette	0	6
Janesville Craig	3	3	Milwaukee De Sales	0	6

# DEBATE: Summary of District Tournaments

## Eau Claire District at Eau Claire Memorial

	Won	Lost		Won	Lost
Eau Claire Memorial	6	0	Rice Lake	3	3
Chippewa Falls McDonell	4	2	Barron	2	4
Chippewa Falls Senior	4	2	Mondovi	1	5
Eau Claire North	4	2	Eau Claire Homer DeLong Jr.	0	6

## Green Bay District at Green Bay Southwest

	Won	Lost		Won	Lost
Sheboygan North	6	0	Green Bay West	3	3
Appleton West	5	1	Manitowoc Lincoln	3	3
Oconto Falls	5	1	Shawano	3	3
Kimberly	4	2	De Pere Abbot Pennings	2	4
Luxemburg-Casco	4	2	Green Bay Bay Port	2	4
New London	4	2	Marquette	2	4
Clintonville	3	3	Sheboygan South	2	4
Green Bay East	3	3	Ashwaubenon	1	5
Green Bay Preble	3	3	Pembine	1	5
			Seymour	1	5

## Kenosha District at Marquette High School

	Won	Lost		Won	Lost
Greenfield	6	0	Mukwonago	3	3
Milwaukee Marquette	5	1	South Milwaukee	3	3
Milwaukee Pius XI	5	1	Union Grove	3	3
Kenosha Tremper	4	2	West Allis Central	3	3
Milwaukee De Sales	4	2	East Troy	1	5
Waukesha	4	2	Hamilton Sussex	1	5
Greendale	3	3	Juneau Dodge Land	1	5
			Racine Horlick	0	6

## La Crosse District at UW - La Crosse

	Won	Lost		Won	Lost
Onalaska	6	0	Black River Falls	2	4
La Crosse Aquinas	5	1	Cassville	2	4
La Crosse Logan	4	2	Platteville	2	4
Belmont	3	3	Seneca	0	6
La Crosse Central	3	3			

Milwaukee District at Brookfield Central

	Won	Lost		Won	Lost
Brookfield Central. . .	5	1	West Bend East . . . .	3	3
Brookfield East . . .	5	1	Whitefish Bay. . . . .	3	3
Wauwatosa East. . . .	5	1	Cedarburg. . . . .	2	4
Hartford Union. . . .	4	2	Port Washington. . . .	2	4
Milwaukee James Madison	4	2	Dodgeland Juneau	1	5
Nicolet . . . . .	4	2	Menomonee Falls North.	1	5
Oconomowoc. . . . .	4	2	West Bend West . . . .	1	5
Slinger . . . . .	4	2	Pewaukee . . . . .	0	6
Mequon Homestead. . .	3	3			
Milwaukee Riverside .	3	3			

River Falls District at River Falls

	Won	Lost		Won	Lost
Durand. . . . .	6	0	St. Croix Falls. . . .	3	3
Amery . . . . .	5	1	Hudson . . . . .	1	5
Lakeland Minocqua . .	3	3	Osceola. . . . .	0	6
River Falls . . . . .	3	3			

Stevens Point District at UW - Stevens Point

	Won	Lost		Won	Lost
Oshkosh . . . . .	6	0	Wisconsin Rapids Lincoln	3	3
Wausau West . . . . .	5	1	Neenah Armstrong . . .	2	4
Merrill . . . . .	4	2	Wausau Newman. . . . .	2	4
Rhinelanders . . . . .	4	2	Wisconsin Rapids . . .		
Wausau East . . . . .	4	2	Assumption	2	4
Stevens Point Senior.	3	3	Waupaca. . . . .	1	6
			Berlin . . . . .	0	6

Whitewater District at Fort Atkinson

	Won	Lost		Won	Lost
Middleton . . . . .	6	0	Sun Prairie. . . . .	3	3
Watertown . . . . .	5	1	Beloit Memorial. . . .	2	4
Janesville Craig. . .	4	2	Elkhorn. . . . .	2	4
Madison Edgewood. . .	4	2	Fort Atkinson. . . . .	2	4
Madison La Follette .	4	2	Madison Memorial . . .	2	4
Monona Grove. . . . .	4	2	Whitewater . . . . .	1	5
Janesville Parker . .	3	3	Lake Geneva Badger . .	0	6
Madison West. . . . .	3	3			
Monroe. . . . .	3	3			

DEBATE: Summary of Participation, 1972-73

Eau Claire District . . . . . 44 Member Schools

Local	District	Section	State
12 Schools	8 Schools	4 Schools	2 Schools
166 Students	40 Students	20 Students	12 Students
	Win-Loss Record	Win-Loss Record	Win-Loss Record
	6-0 1 School	6-0 1 School	6-0 0 School
	5-1 0	5-1 0	5-1 0
	4-2 3	4-2 1	4-2 1

Green Bay District. . . . . 53 Member Schools

Local	District	Section	State
18 Schools	16 Schools	5 Schools	1 School
268 Students	268 Students	25 Students	6 Students
	Win-Loss Record	Win-Loss Record	Win-Loss Record
	6-0 0 School	6-0 1 School	6-0 0 School
	5-1 2	5-1 0	5-1 0
	4-2 3	4-2 0	4-2 0

Kenosha District. . . . . 39 Member Schools

Local	District	Section	State
15 Schools	15 Schools	6 Schools	3 Schools
186 Students	186 Students	30 Students	15 Students
	Win-Loss Record	Win-Loss Record	Win-Loss Record
	6-0 1 School	6-0 1 School	6-0 1 School
	5-1 2	5-1 0	5-1 0
	4-2 3	4-2 2	4-2 1

La Crosse District. . . . . 36 Member Schools

Local	District	Section	State
10 Schools	6 Schools	3 Schools	None
208 Students	24 Students	14 Students	
	Win-Loss Record	Win-Loss Record	
	6-0 1 School	6-0 0 School	
	5-1 1	5-1 0	
	4-2 1	4-2 0	

Milwaukee District. . . . . 44 Member Schools

Local	District	Section	State
22 Schools	18 Schools	8 Schools	5 Schools
330 Students	90 Students	40 Students	27 Students
	Win-Loss Record	Win-Loss Record	Win-Loss Record
	6-0 0 School	6-0 0 School	6-0 0 School
	5-1 3	5-1 2	5-1 0
	4-2 5	4-2 3	4-2 1

Oshkosh District. . . . . 52 Member Schools

<u>Local</u>	<u>District</u>	<u>Section</u>	<u>State</u>
7 Schools	6 Schools	2 Schools	2 Schools
90 Students	90 Students	12 Students	10 Students
	<u>Win-Loss Record</u>	<u>Win-Loss Record</u>	<u>Win-Loss Record</u>
	6-0 2 Schools	6-0 0 School	6-0 0 School
	5-1 0	5-1 0	5-1 1
	4-2 0	4-2 2	4-2 1

Platteville District. . . . . 38 Member Schools

<u>Local</u>	<u>District</u>	<u>Section</u>	<u>State</u>
No Schools	4 Schools	None	None
	24 Students		
	<u>Win-Loss Record</u>		
	6-0 0 School		
	5-1 0		
	4-2 0		

River Falls District. . . . . 28 Member Schools

<u>Local</u>	<u>District</u>	<u>Section</u>	<u>State</u>
6 Schools	6 Schools	2 Schools	1 School
91 Students	70 Students	10 Students	6 Students
	<u>Win-Loss Record</u>	<u>Win-Loss Record</u>	<u>Win-Loss Record</u>
	6-0 1 School	6-0 0 School	6-0 0 School
	5-1 1	5-1 1	5-1 1
	4-2 0	4-2 0	4-2 0

Stevens Point District. . . . . 55 Member Schools

<u>Local</u>	<u>District</u>	<u>Section</u>	<u>State</u>
12 Schools	9 Schools	4 Schools	3 Schools
170 Students	45 Students	20 Students	18 Students
	<u>Win-Loss Record</u>	<u>Win-Loss Record</u>	<u>Win-Loss Record</u>
	6-0 0 School	6-0 1 School	6-0 0 School
	5-1 1	5-1 1	5-1 0
	4-2 3	4-2 1	4-2 0

Superior District . . . . . 23 Member Schools

<u>Local</u>	<u>District</u>	<u>Section</u>	<u>State</u>
3 Schools	1 School	1 School	None
15 Students	5 Students	4 Students	
	<u>Win-Loss Record</u>	<u>Win-Loss Record</u>	
	6-0 0 School	6-0 0 School	
	5-1 0	5-1 0	
	4-2 0	4-2 0	

Whitewater District . . . . . 53 Member Schools

<u>Local</u>	<u>District</u>	<u>Section</u>	<u>State</u>
17 Schools	15 Schools	6 Schools	None
259 Students	75 Students	30 Students	
	<u>Win-Loss Record</u>	<u>Win-Loss Record</u>	
	6-0 1 School	6-0 0 School	
	5-1 1	5-1 0	
	4-2 4	4-2 0	

Totals. . . . . 465 Member Schools

<u>Local</u>	<u>District</u>	<u>Section</u>	<u>State</u>
122 Schools	104 Schools	41 Schools	17 Schools
1783 Students	917 Students	205 Students	92 Students
	<u>Win-Loss Ratings</u>	<u>Win-Loss Ratings</u>	<u>Win-Loss Ratings</u>
	6-0 7 Schools	6-0 4 Schools	6-0 1 School
	5-1 11	5-1 4	5-1 2
	4-2 22	4-2 9	4-2 4

## SPEECH: The State Contest

The State Speech Contest was held on the campus of the University of Wisconsin - Madison on April 28, 1973. Listed below, by districts, are the contestants in each contest category. Those marked with an asterisk received A ratings.

### Extemporaneous Speaking

#### Eau Claire District

Tom Baker, Stanley-Boyd  
\*Larry Briski, Greenwood  
William Conley, Rice Lake  
\*Robert Cooke, Gilmanton  
Howard Corey, Neillsville  
\*Bill Felix, Chippewa Falls  
McDonnell  
\*Gary Goodpaster, Eau Claire  
North  
\*Brent Hoff, Barron  
Don Hoffelt, Bruce  
\*Kay Kruse, Menomonie Senior  
\*Robert Milliman, Rice Lake  
Dana Nesja, Chippewa Falls  
Senior  
Jay Nispel, Eau Claire North  
\*David Onsted, Eau Claire  
Memorial  
\*Patti Pattison, Mondovi  
\*Janet Piterle, Eau Claire  
Memorial  
Jack Radcliffe, Eleva-Strum  
\*Victor Ranczynski, Neillsville  
\*Dan Smetana, Bloomer  
Debbie Taylor, Bloomer

#### Green Bay District

Al Amrosius, De Pere  
Vic Bast, Oconto Falls  
\*Chris Boyce, Green Bay Preble  
Tom Cubbitt, Green Bay South-  
West  
Tony Czarnik, Kimberly  
\*Dave De Bruin, Kimberly  
Ken Graves, Green Bay Bay Port  
\*David Harper, Appleton West  
Don Main, Shiocton  
Jan Malchow, Green Bay Bay Port  
\*Sally March, Algoma  
Neal Nicklaus, Marinette  
Karen Oberhauser, Clintonville  
Marvin Pies, Algoma

\*David Richard, Appleton East  
\*Don Roarty, Ashwaubenon  
\*Carl Templin, Shawano  
Jeff Tews, New London  
Cathy Vogl, Green Bay Southwest

#### Kenosha District

\*Ralph Biernat, Milwaukee Pius XI  
\*Darice Clewell, Wales Kettle  
Moraine  
Rick Cronce, West Allis Central  
Gerianne Engel, Greenfield  
Whitnall  
Jane Kutz, Franklin  
Guy Al Lee, Milwaukee Hamilton  
\*Dan Murphy, Milwaukee Pius XI  
Dan Sadowski, Milwaukee Juneau  
Nancy Swensen, Mukwonago  
Sandra Trader, East Troy  
\*Jon Weisse, West Allis Nathan  
Hale

#### La Crosse District

Rachelle Dyh, Seneca  
Karla Frost, Sparta  
David Geier, Ontario Brookwood  
Derek Harvey, La Crosse Aquinas  
\*Jim Hofrichter, Hillsboro  
David Hough, La Farge  
Don Hynek, Viola Kickapoo  
\*Peggy Kelbel, Hillsboro  
Dave Mullen, Holmen  
Tom Roskos, Arcadia  
\*Warren Rees, La Crosse Central  
\*Brian Rude, Westby  
\*Mike Stoker, Onalaska  
Mike Quinn, West Salem  
Dennis Vosen, La Farge

#### Milwaukee District

\*Deb Auten, Beaver Dam Senior  
\*Lisa Bronette, West Bend West  
\*Ray Kip Edwards, Brookfield  
Central  
\*Laura Gauger, West Bend West  
Patricia Gorski, Milwaukee  
Custer  
Glenn Grothman, Mequon Homestead  
\*Laurie Johnson, Port Washington  
Daryl Kurtz, Mequon Homestead  
\*Scott Landvatter, West Bend East  
Dave Meyers, Wauwatosa East  
\*Mark Pennow, Wauwatosa East  
\*Paul Schmidt, Brookfield Central  
\*Jeff Wagner, Nicolet  
\*Becky Woods, Oconomowoc Senior

#### Oshkosh District

Dave Asmuth, Menasha St. Mary  
\*Tom Bennett, Omro  
\*Carol Brown, Sheboygan-North  
Chris Bushman, St. Lawrence  
Shirley DeBlaey, Cedar Grove  
Rick Eberhart, Sheboygan-South  
\*John Hale, Menasha St. Mary  
\*Dick Kettler, Waupun  
Debbie Krueger, Brillion  
\*Sharon Linstedt, Winneconne  
Alan Lovell, Omro  
\*Neal Meissner, Reedsville  
\*Karen Messner, Oshkosh-West  
Dawn Oppermann, Waupun  
\*David Seifert, Kiel  
\*Paul Tenpas, Kohler  
\*Scott Thomas, Kohler  
Debbie Wiedmeyer, Lomira

#### Platteville District

Ken Duren, Spring Green River  
Valley  
\*John Keyes, Belmont  
Debbie Klebesadel, Spring Green  
River Valley  
\*Paul Nevins, Blanchardville  
Pecatonica  
\*Steve Scallon, Iowa-Grant  
\*Bill Stohlmeyer, Potosi  
\*Elizabeth Thomson, Mount Horeb  
Beth Twiton, Barneveldt

#### River Falls District

\*Tom Bowman, Durand  
\*Ruth Brenner, Durand  
Laurie Clayton, St. Croix Falls  
\*Chris Kelley, River Falls  
\*Agnes Ring, Hammond St. Croix  
Central  
\*Steve Swenson, River Falls  
\*Tom Taylor, Hudson  
\*Loel York, Amery  
\*Ruth Zwald, Hammond St. Croix  
Central

#### Stevens Point District

Dan Allen, Stevens Point Senior  
\*Terry Brockman, Wisconsin  
Rapids Assumption  
Grace Glatczak, Schofield  
D. C. Everest  
\*Mary Halford, Plainfield  
Russ Lowe, Waupaca  
Brian Mink, Antigo  
\*Jane Ogilvie, Wisconsin Rapids  
Lincoln  
\*Mark Peter, Athens  
Jim Robinson, Tomahawk  
Vickie Steinbach, Manawa Little  
Wolf  
Duane Tritz, Pittsville  
\*David Vanney, Rhinelander  
\*Marc Williams, Port Edwards  
Dave Young, Port Edwards

#### Superior District

Debra Barnhardt, Hayward  
Gary Beecham, Phillips  
Scott Hoffman, Maple North-  
western  
\*Steve Jackobs, Superior Senior  
\*Louis Kempinsky, Superior  
Senior  
\*Kevin Klein, Butternut  
\*Debbie Matz, Minocqua Lakeland  
Barbara Morris, Ashland  
\*Joe Morrison, Ondossagon  
Greg Olson, Spooner  
Ronald Vaughn, Mercer



### Whitewater District

\*Mike Ash, Madison Memorial  
\*Eric Barr, Madison Holy Name  
\*Patrick Berigan, Madison Edgewood  
Dwight Clough, Monona Grove  
\*Sheri Dewierd, Delavan-Darien  
Frank Filas, Pardeeville  
Dan Forbes, Beloit Turner  
Kevin Greaney, Middleton  
Kay Grinde, De Forest

### Four-Minute Speech

### Eau Claire District

Carol Adams, Greenwood  
\*Sue Anderson, Osseo  
Fred Baumgartner, Eau Claire  
Memorial  
\*Laurie Bronken, Barron  
Ron Crittenson, Rice Lake  
Teri Erickson, Bloomer  
Marge Gerber, Bruce  
Sherry Herman, Eleva-Strum  
Cindy Knopp, Owen-Withee  
\*Cathy Lane, Barron  
\*Mary Langhus, Colby  
\*Jerri Lasiuk, Altoona  
Dick Leinenkugel, Chippewa Falls  
Senior  
\*Marianne Le Mere, Augusta  
Charlotte Marion, Cadott  
\*Lisa Novotny, Eau Claire Central  
Becky Phillips, Alma Center  
Bruce Robertson, Eau Claire  
Memorial  
Barb Rogers, Colby  
\*Kathy Schultz, Menomonie Senior  
\*Vivian Shafer, Chippewa Falls  
Senior  
\*Cindy Slowiak, Cadott  
Lu Ann Westberg, Pepin  
Arlene Woodcock, Tony Flambeau  
\*Sandy Zimmerman, Neillsville

### Green Bay District

\*Steve Harp, Clinton  
\*Steve Kocs, Delavan-Darien  
Mary Larson, Fall River  
\*Anna Mae Prem, Lodi  
Anne Matthews, Madison Edgewood  
Carita Rademacher, Waterloo  
\*Russ Schmunk, Whitewater  
Karen Stephens, Oregon

John Ackerman, Fish Creek  
Gibraltar  
John Allen, Fish Creek  
Gibraltar  
\*Janet Augsburger, Sevastapol  
Linda Bartelt, Bonduel  
\*Karen Bartolac, Niagara  
\*Mary Bleick, Bonduel  
\*Ann Borisoff, Green Bay  
Southwest  
\*Judy Bunker, Coleman  
Dennis Byrne, Freedom  
\*Teresa Cribb, Oconto Falls  
\*Kathy Dax, Luxemburg-Casco  
\*Debbie Eisenreich, Seymour  
\*Lori Eiting, West De Pere  
\*Pam Glesner, Sturgeon Bay  
\*Monica Guilette, Southern Door  
\*Maude Hardacker, Appleton East  
John Hawley, Green Bay Preble  
\*Mark Jeffers, New London  
\*Ann McCarthy, Clintonville  
\*Don Majeski, Luxemburg-Casco  
\*Mark Mathewson, New London  
\*Darlene Moldenhauer, Clintonville  
\*Linda Nickel, Oconto Falls  
\*Clark Olsen, Peshtigo  
\*Doug Purdy, Appleton East

### Green Bay Continued

\*Mike Rippl, Oneida Sacred Heart  
Sandy Schneider, Ashwaubenon  
\*Scott Sittarich, Green Bay  
Southwest  
\*Amy Smukal, De Pere  
Brenda Tolzman, Gillett  
Joyce Wachal, Denmark  
\*Aleda Wahlstrom, Florence  
\*Linda Vander Wielen, Kimberly  
Mark Williams, Green Bay Preble  
Pam Woyak, Appleton West

### Kenosha District

\*Terre Borkovec, Greendale  
\*Kathy Burns, Union Grove  
Paula Craven, Union Grove  
Mike Fillipone, New Berlin West  
\*Kim Gehrt, Muskego  
\*Edwardo Gutierrez, Milwaukee Boys  
Tech  
\*Peggy Hager, West Allis Nathan  
Hale  
\*Bill Haissig, St. Francis  
Judy Kolessari, West Allis Central  
Jay Laessig, Milwaukee Bay View  
Cindy Nass, Franklin  
\*Dick Novotny, Muskego  
\*Donna Oberthaler, Greendale  
Maggie O'Connor, Cudahy  
\*Eileen Pfeifer, Waterford  
Cathy Post, East Troy  
\*Linda Santilli, West Allis Nathan  
Hale  
John Yingling, West Allis Central  
\*Julie Zelinski, East Troy

### La Crosse District

Pat Arttus, Elroy Royall  
\*Harlan Bergum, Viroqua  
\*Jeff Christenson, Onalaska  
Lawrence Eklor, Westby  
Cheryl Goetsch, Cazenovia Weston  
\*Paul Hazen, Wauzeka  
\*Rochell Hepp, Mauston  
Amy Hudson, Ithaca  
Joyce Kampa, Arcadia  
Marie Nestingen, Blair  
Steve Ninneman, Tomah  
Debbie Oler, Viola Kickapoo  
\*Lynn Parkhurst, Galesville Gale  
Ettrick

\*Shirley Peterson, Seneca  
\*Larry Potter, La Farge  
\*Barbara Stanek, Hillsboro  
\*Darryl Van Kirk, Sparta

### Milwaukee District

\*Randy Chovan, West Bend West  
\*Debbie Donath, Slinger  
\*Sarah Frank, Oconomowoc Senior  
\*Patricia Gundrum, Kewaskum  
\*Ann Heyrman, Brookfield Central  
\*Betty Hussander, Shorewood  
Sara Marotz, Brookfield East  
\*Kris Naab, West Bend East  
\*Laurie Peltin, Nicolet  
Bob Rinka, Shorewood  
\*Rebecca Rogers, Milwaukee West  
Division  
\*Bob Rose, Brookfield Wisconsin  
Hills  
\*Claude Ruehl, Brookfield East  
Mike Shannon, Brookfield Wisconsin  
Hills  
\*Laure Sharkey, Horicon  
\*Pattie Smith, Beaver Dam Senior  
\*Sandy Spenser, Cedarburg  
Christopher Stacey, Wautoma West  
\*Sharon Stern, West Bend West  
\*Sue Utecht, Port Washington  
Debbie Vans, Mequon Homestead  
\*Terry Wolf, Cedarburg  
\*Diane Zadra, West Bend East

### Oshkosh District

\*Juli Berlin, JFK Prep  
Cathy Boegel, Campbellsport  
\*Jim Carlson, Sheboygan Falls  
\*Linda Cherney, Reedsville  
Agnes Daun, New Holstein  
Debbie Detert, Fond du Lac  
Sabish  
\*Ellen Goiz, Montello  
Marian Fenner, Howards Grove  
\*Steve Hansen, Oakfield  
\*Rick Hills, Menasha Butte des  
Morts  
\*Fred Hoffman, Menasha St. Mary  
Diane Jakubowski, Oshkosh Lourdes  
\*John Jansen, Menasha St. Mary

## Oshkosh Continued

Brenda Jenkin, Ripon  
 Larry King, Oshkosh North  
 Mary Klotz, Hilbert  
 Karen Kraemer, Elkhart  
 Glenbeulah  
 \*Steve Krell, Winneconne  
 \*Hector Lebert, St. Lawrence  
 \*Kathy Murphy, Manitowoc Holy  
 Family  
 \*Bonny Ott, JFK Prep  
 Lu Ann Paulson, Sheboygan South  
 \*Diane Petrie, New Holstein  
 Marijo Prom, Cedar Grove  
 John Raiseleger, Mishicot  
 Vicky Reany, Omro  
 \*Jim Riesterer, St. Lawrence  
 Nancy Reisterer, Reedsville  
 \*Kathy Rickert, Ozaukee  
 Julie Sasman, Kiel  
 Jon Scheller, Oshkosh West  
 Sandy Schreiner, Lomira  
 \*Laurel Semenske, Winnebago  
 Lutheran  
 Suzanne Vogler, Neenah Armstrong  
 Tom Wittman, Brillion

## Platteville District

\*Linda Bradeson, Darlington  
 \*Cindy Carson, Brodhead  
 Nancy Clayton, Belmont  
 Pat Dohm, Cassville  
 \*Pam Foley, Fennimore  
 \*Cheree Klein, Potosi  
 \*Joyce Korn, Blackhawk  
 \*Linda Krauss, Monroe  
 \*Carl Lindokken, Blanchardville  
 \*Stuart McCaskill, Spring Green  
 \*Vicki McLimans, Fennimore  
 Gary Phelps, Dodgeville  
 \*Tom Pinch, Livingston Iowa-Grant  
 \*Candy Richard, Hazel Green  
 Carol Schuette, Reedsburg  
 Diane Silbaugh, New Glarus  
 \*Karen Thulin, Platteville  
 \*Kevin Wienkers, Iowa-Grant

## River Falls District

\*Faye Brenner, Durand  
 Gail Carlson, Amery

Kathy Dieltz, Somerset  
 Sara Garlid, Prescott  
 \*Pam Holin, Milltown Unity  
 \*Wendy Kelley, St. Croix Falls  
 \*Tina Lake, Shell Lake  
 \*Cindy Newville, Clear Lake  
 \*Steve Pitschneider, New Rich-  
 mond  
 \*Bonnie Reinier, Elmwood  
 Brenda Taylor, Webster

## Stevens Point District

Sharon Baldwin, Adams-  
 Friendship  
 \*Margaret Brill, Marathon  
 \*Jean Debyle, Rhinelander  
 \*Sham Dixon, Stevens Point Ben  
 Franklin  
 \*Rose Duginski, Wittenberg-  
 Birnamwood  
 Mary Greenlaw, Marshfield  
 \*Debbie Griep, Marshfield  
 Senior  
 \*Kitty Hayes, Stevens Point  
 \*Marlene Kosobucki, Schofield  
 Everest  
 \*Wendy Osness, Tomahawk

## Superior District

\*Lynn Bresina, Solon Springs  
 Jim Bruch, Butternut  
 Cindy Celinski, Port Wing  
 Linda Cohen, Superior Central  
 Kathy Draeger, Butternut  
 \*Mary Foltz, Minocqua Lakeland  
 \*Sissy Grieb, Park Falls  
 Jim Guild, Mercer  
 \*Lynn Kelsey, Hayward  
 \*Marty Laakso, Maple North-  
 western  
 Joann Lindstrom, Ashland  
 \*Carol Shinaway, Glidden  
 Bill Torrey, Superior Senior  
 \*Natalie Tyler, Minocqua Lake-  
 land  
 Tom Unterberger, Superior  
 Senior  
 Kim Wohlford, Spooner  
 \*Joan Wroblewski, Ondossagon

## Whitewater District

\*Bryce Bohr, Beloit Memorial  
 \*Kristine Clerkin, Madison Edgewood  
 Donna Doeber, Elkhorn  
 \*Gina Frank, Middleton  
 Sylvia Hanson, De Forest  
 \*Becky Hartmann, Delavan-Darien  
 \*Dan Heine, Madison Holy Name  
 Juliet Kautz, Johnson Creek

\*Richard Klaas, Madison Holy Name  
 Wendy McNamara, Delavan-Darien  
 \*Chris Nahmens, Jefferson  
 Debbie Nocek, Lake Geneva  
 \*Brian Paull, Verona  
 Mary Schirmer, Baraboo  
 Suzanne Vogler, Neenah Armstrong  
 \*Denise Woelffer, Lake Mills

## Oratory

### Eau Claire District

Lynn Budrus, Gilman  
 \*Chris Cooper, Eau Claire North  
 \*Kathy Diehn, Tony Flambeau  
 Linda Frederick, Owen-Withee  
 \*John Fukey, Chippewa Falls  
 McDonell  
 Joli Gilbertson, Cumberland  
 Sandra Gregory, Loyal  
 \*Bruce Hart, Gilmanton  
 \*Greg Haug, Eau Claire Memorial  
 Charles Hayes, Menomonie Junior  
 Linda Hilber, Colby  
 \*Dorla Hium, Greenwood  
 \*Jackie Laufenberg, Osseo  
 Cindy Lehman, Mondovi  
 \*James Mehls, Fall Creek  
 Hilary Melville, Fall Creek  
 \*Sharon Odegard, Mondovi  
 Barb Peterson, Chetek  
 \*Erline Peterson, Colfax  
 Marty Shimko, Bruce  
 Sally Steiner, Gilmanton  
 \*Ned Wahl, Eau Claire Memorial

### Green Bay District

\*John Gagno, Oneida Sacred Heart  
 Paula Granus, Luxemburg-Casco  
 \*Cecile Grundman, Green Bay  
 Southwest  
 Cheri Haen, Luxemburg-Casco  
 Monica Juds, Bonduel  
 Denise Klipen, Green Bay  
 Southwest  
 Gloria Krausee, Coleman  
 \*Kay Loss, New London  
 \*Anne Melchert, Seymour  
 Linda Ribarchek, Green Bay  
 Southwest  
 Mary Sambs, Hortonville  
 \*Sally Sengstock, Marinette  
 Marie Tachen, Bonduel  
 \*Kim Taylor, Appleton West  
 \*Connie Usiak, Oconto Falls  
 \*Debbie Van Nuland, Kimberly  
 \*Bill Walker, Kaukauna  
 \*Debby Wiese, Clintonville

### Kenosha District

\*Linda Barger, Greenfield Whitnall  
John Barry, Wales Kettle Moraine  
Judy Behling, Waterford  
Jackie Bluemmer, Franklin  
Ann Cerne, Union Grove  
Teresa Esser, Wales Kettle Moraine  
\*Ruth Fenhouse, South Milwaukee  
Diane Hansche, Salem Central  
Cheryl Humar, New Berlin  
Eisenhower  
Lyn Janiszewski, South Milwaukee  
\*Tom Kulaga, Greendale  
\*Sue Lauer, Union Grove  
Linda McPhetridge, St. Francis  
\*Dee Paczocha, Cudahy  
\*Mary Jean Sayda, Greenfield  
Whitnall  
Chris Schaeffer, New Berlin  
Eisenhower  
\*Nancy Sopke, Cudahy  
Mary Szmanda, East Troy  
Diane Walker, Salem Central  
Dan Yerke, Mukwonago

### La Crosse District

Beverly Bisek, Arcadia  
\*Chris Clements, Cashton  
\*Cathy Curran, Mauston  
\*Kirk Davidson, Onalaska  
Wyman Fjelstad, Desoto  
\*Maribeth Glassburn, Cazenovia  
Weston  
\*Cherie Gilbeck, Westby  
\*Naomi Gunderson, Whitehall  
\*Sandra Hubbard, Ontario Brookwood  
Kevin O'Keefe, La Crosse Aquinas  
\*Rod Price, Holmen  
\*Anna Riezenger, Black River Falls  
\*Abby Roberts, Hillsboro  
\*Marla Schmidt, Melrose-Mindoro  
\*Debbie Suireja, Independence  
\*John Torkelson, Black River Falls  
\*Katy Twesme, Galesville Gale-  
Ettrick

### Milwaukee District

\*Valerie Baker, Brookfield East  
\*Patrice Bell, Horicon

Jean Dunfee, Cedarburg  
\*Bill Edwards, Nicolet  
Chris Fenz, Juneau Dodge-  
land  
\*Jim Gernetzke, Juneau Dodge-  
land  
\*Julie Hagner, Shorewood  
\*Karla Jansen, West Bend East  
Nancy Kress, Cedarburg  
\*Kristine Meilhan, Kewaskum  
\*Jill McDonough, Brookfield  
Central  
Michelle Nowak, Beaver Dam  
Senior  
\*Kathy Oates, Nicolet  
\*Ann Pullkownik, Oconomowoc  
Senior  
Jim Sehloff, Beaver Dam Senior  
\*Anne Siegel, Mequon Homestead  
\*James Siegmann, West Bend East  
\*Sue Schleif, West Bend West  
\*Estil Strawn, Whitefish Bay  
\*Greg Unertl, Slinger  
Sue Witt, Brown Deer

### Oshkosh District

\*Gretchen Albrecht, Kiel  
\*Tom Allcox, Menasha St. Mary  
\*Laura Allen, Winneconne  
Maggie Brandt, Ripon  
\*Debbie Carpenter, Campbellsport  
Tony Fritz, Sheboygan South  
\*Gerry Grzegorzczak, St. Lawrence  
Tina Guenther, Campbellsport  
\*Debbie Kumbalek, Howards Grove  
\*Marianne Kuskowski, Menasha  
St. Mary  
Stephanie Miller, Neenah  
Armstrong  
\*Joanne Mueller, Manitowoc Holy  
Family  
\*Todd Murken, Oshkosh West  
\*Mats Nilsmo, Reedsville  
\*Jolee Reinke, Reedsville  
Mike Sigman, Manitowoc Lincoln  
\*Mike Roth, Fond du Lac Goodrich  
\*Lori Rusch, Valders  
Marge Sauder, Lomira  
\*David Vicena, New Holstein  
\*Lynne Weyenberg, Winneconne

### Platteville District

\*Lisle Blackburn, Lancaster  
\*Nancy Frudden, Sauk Prairie  
Marlene Gruter, New Glarus  
\*Jim Langkamp, Platteville  
\*Janice Leffler, Fennimore  
\*Alice Monroe, Fennimore  
\*Joan Price, Spring Green  
\*Bill Spencer, Platteville  
\*Glenn Staffield, Brodhead  
\*Roger Swigart, Shullsburg  
Dave Riese, Monticello  
\*Dolores Uppena, Cassville  
\*Mary Wainright, Prairie du Chien  
\*Mary Wiest, Bloomington  
\*Debbie Zins, Spring Green

### River Falls District

\*Diane Brask, Grantsburg  
\*Lynda Felling, Osceola  
Patty Jacobson, Hammond St. Croix  
Central  
Sue Kirkeeng, Ellsworth Senior  
\*Olivia Mathison, New Richmond  
\*Meg O'Connell, Hammond St. Croix  
Central  
\*Barb T'Kach, Somerset  
\*Sue Siegersma, Baldwin-Woodville  
\*Jane Smiley, Webster  
\*Jackie Smith, Durand  
Arlene West, Frederic

### Stevens Point District

\*Cathy Adamski, Edgar  
\*Sue Akerlaund, Eagle River  
\*Sandy Arendt, Port Edwards  
\*Lee Ann Baeman, Rhinelander  
Lisa Bocaner, Wisconsin Rapids  
West  
David Dall, Rhinelander  
Carol Colby, Abbotsford  
\*Ken Farmer, Stevens Point  
Ruth Fromstein, Antigo  
Dawn Gauger, Spencer  
\*Cindy Goldbach, Marathon  
\*Jim Koepke, Merrill  
Karen Jost, Stevens Point Senior  
\*Joan Joswiak, Edgar  
Carol Lassila, Stratford  
Bill Memke, Wittenberg-Birnamwood  
Hugo Mielke, Marion

Judy Moser, Wausau West  
Monica Nichter, Weyauwega  
Patty Russel, Plainfield  
Wanda Stroyny, Mosinee  
Jay Tlusty, Merrill  
\*Dorien Weiler, Athens  
\*Janet Williams, Wausau West

### Superior District

\*Kay Anderson, Port Wing  
Mary Arnold, Solon Springs  
Scott Barnes, Washburn  
Judy Bell, Mercer  
\*Terry Bloom, Phillips  
Lynn Bosley, Superior Senior  
\*Debi Carlson, Prentice  
\*Yvonne Draeger, Butternut  
Paul Fellin  
\*Anne Gokee, Bayfield  
Doreen Hanninen, Ashland  
Sandy Hamblin, Hayward  
\*Sandy Knowles, Solon Springs  
Nancy Johnson, Maple North-  
western  
\*Suzie Rybek, Butternut  
Loren Skow, Maple Northwestern  
Nancy Tatge, Superior Central  
Kathy Winselman, Spooner

### Whitewater District

Karen Bjornsen, Baraboo  
\*Tom Dalton, Pardeeville  
\*Len Hickey, Columbus  
\*Michael Kaltenberg, Madison  
Holy Name  
John Klein, Fort Atkinson  
\*Kathi Kocs, Delavan-Darien  
\*Jean Knuteson, Whitewater  
Lisa Olivas, Elkhorn  
Beth Middleton, Lodi  
Linda Murray, Wisconsin Dells  
\*Julie Piatt, Whitewater  
\*Charles Oehler, Madison Holy  
Name  
Wendy Piester, Elkhorn  
Jean Salzwedel, De Forest  
Vida Scully, Lake Geneva  
\*John Smet, Stoughton  
Ellen Sullivan, Waterloo  
Darlene Thorstad, Deerfield

## Whitewater Continued

\*Judy Vanderbilt, Wisconsin Dells  
\*Gail Wurtzler, Middleton

Mike Zeimet, Waunakee  
\*Nancy Zimbric, Waterloo

### Public Address

#### Eau Claire District

\*Mabel Benson, Neillsville  
Linda Bohac, Alma Center  
\*Ron Brock, Cumberland  
\*Karen Clumpner, Barron  
Dawn Gorske, Bruce  
Delbert Haas, Cadott  
\*Sandra Hahn, Augusta  
Roxanne Hansen, Chippewa Falls Senior  
Kim Hill, Eau Claire Central  
Greg Irwin, Eau Claire North  
Debra Krom, Greenwood  
Paula Mohan, Colby  
Beverly Myhre, Osseo  
\*Grace Nelson  
\*Lisa Recore, Tony Flambeau  
Bill Schroeder, Mondovi  
Kathy Smith, Eleva-Strum  
\*Parker Vivoda, Loyal  
\*Cindy Washburn, Eau Claire Central

#### Green Bay District

\*Debbie Banaszak  
Peter Biersteker, Kimberly  
\*Kathy Borkowski, Coleman  
Vicki Conradt, Shiocton  
Fred Debold, West De Pere  
\*Terri Donart, Green Bay Southwest  
Becky Halstead, Sevastapol  
\*Gary Harrick, Green Bay Preble  
\*Karen Holub, Algoma  
Vicki Jens, Shiocton  
\*Linda Kirchenvitz, Bonduel  
Debbie Kraynik, Kewaunee  
Melissa Magee, Bonduel  
\*Rosemary Markgrof, Seymour  
\*Cindy Nelessen, Kimberly  
\*Dave Scheidermayer, Appleton East  
\*Jacquie Schnable, Seymour  
Steve Wieckert, Appleton West  
Terry Williams, Green Bay Bay Port  
Mark Wilson, Hortonville  
\*Judy Wunsch, Clintonville

#### Kenosha District

\*Bob Disch, St. Francis  
\*Mike Doherty, Wales Kettle Moraine  
Debora Gary, West Allis Nathan Hale  
Kerry Hays, Greendale  
\*Kathy Highland, Union Grove  
\*Janet Jaspersen, Waterford  
\*Sharon Kendall, Greenfield Whitnall  
\*Darlene Klaehn, East Troy  
\*Kris Klemm, Cudahy  
\*Nancy Reppinger West Allis Nathan Hale

#### La Crosse District

\*Bonnie Bagstad, Westby  
Barbara Brickl, La Farge  
\*Jeff Chenoweth, Blair  
Rita Hagen, Sparta  
\*Debbie Lund, Galesville Gale-Ettrick  
\*Christopher Schnieder, La Crosse Aquinas  
Paul Smith, La Crosse Aquinas  
Pam Solberg, Onalaska  
\*Vicki Storer, Viroqua  
Louise Wopat, Hillsboro

#### Milwaukee District

Richard Edwards, Kewaskum  
Nancy Erbe, Cedarburg  
\*Bob Gleason, Brookfield Central  
Thomas Hensiak, Kewaskum  
\*Diane Herbert, Milwaukee Edison  
Kris Hillman, West Bend West  
\*Diane Hoffman, Horicon  
\*Cheryl Kandel, West Bend East  
\*Karen Keller, West Bend West  
\*Vickie Koch, Brookfield East  
\*Pat Krueger, Juneau Dodgeand  
Terry Latsch, Cedarburg

## Milwaukee Continued

\*Scott Manske, Oconomowoc Senior  
Cheryl Polansky, Nicolet  
\*Cheryl Roberts, Shorewood  
\*Dave Schulz, Milwaukee James Madison  
\*Nancy Schultz, West Bend East

#### Oshkosh District

Jane Bidwell, Oshkosh North  
Mary Brickner, Reedsville  
\*Dale Edmonds, Oshkosh West  
\*Tom Foth, Menasha St. Mary  
Amy Guenther, Campbellsport  
Kevin Keys, Plymouth  
Rick Knurr, Omro  
Luann Kohl, Waupun  
Larry Lenz, Cedar Grove  
Gene Moore, JFK Prep  
Debbie Radtke, Princeton  
Claire Sweet, Chilton  
Mark Wintheiser, Menasha St. Mary

#### Platteville District

\*Mark Becker, Lancaster  
\*Doug Brauner, Spring Green  
\*Gina David, Cassville  
Paula Haraldson, Brodhead  
Terry Leuzinger, New Glarus  
\*Jan McCarville, Spring Green  
Janet Murray, Mount Horeb  
\*Roxanne Paulson, Argyle  
\*Jan Quade, Monticello  
Dianne Smith, Darlington  
\*Ceanna Zimmer, Cassville

#### River Falls District

\*Jennifer Moryn, St. Croix Falls  
\*Martha Olson, Osceola  
\*Marlin Thompson, River Falls  
\*Mary Trettin, Durand  
Mary Voskuil, Baldwin-Woodville

#### Stevens Point District

\*Carl Backer, Wausau East  
\*Georgine Baumann, Mosinee  
\*Steve Braun, Athens  
\*Rick Cigel, Stevens Point Senior

Pat Dunlop, Rhinelander  
Doug Fisher, Eagle River  
\*Lynn Klaeser, Marion  
Sally Krohn, Pittsville  
\*Leigha Kreuger, Antigo  
\*Dave Piehler, Wausau East  
Jeff Quandt, Marion  
\*Jayne Reiche, Edgar  
\*Dawn Riske, Athens  
Jan Shepel, Wittenberg-Birnhamwood  
\*Pat Smith, Wisconsin Rapids Lincoln

#### Superior District

Sue Biscay, Superior Central  
Mary Gaulke, Spooner  
Michael Harnois, Washburn  
Lydelle Hunter, Maple North-western  
\*Kathy Johanik, Ondossagon  
Kim Kesler, Maple Northwestern  
Sherry Kronberger, Butternut  
Pat Mrdjenovich, Hurley  
\*Bruce Nelson, Port Wing  
John Pope, Hayward  
Kevin Roper, Minocqua Lakeland  
Patti Rybak, Butternut  
Mary Smolen, Washburn  
Jane Strycharske, Ondossagon  
\*Mary Jill Vuchetich, Park Falls

#### Whitewater District

\*Gail Bailey, Pardeeville  
Carol Beckmann, Madison Memorial  
\*Terry Callaway, De Forest  
Kathy Compton, Delavan-Darien  
Sue Dinauer, Verona  
Lori Elmer, Evansville  
\*Lori Everson, Middleton  
\*Kay Guilfoyle, Lake Geneva Badger  
Sandy Helms, Lake Mills  
\*Kevin Holmes, Madison Holy Name  
\*Carol Houck, Lake Geneva Badger  
\*Cindy Hustad, Verona  
Wendy Kennan, Oregon  
Jeanne Nelson, Deerfield

## Whitewater Continued

Diane Ring, Columbus  
Nancy Schmaling, Delavan-Darien  
\*Greg Van Rybroek, Madison Holy Name

## Significant Speeches

### Eau Claire District

Karen Benson, Osseo  
Ed Boehm, Bloomer  
\*Donna Brunzlick, Augusta  
Maryann Celesnik, Cadott  
Arnold Claflin, Pepin  
\*Karen Cutsforth, Rice Lake  
\*Veronica Elmer, Chippewa Falls Senior  
\*Greg Everts, Eau Claire Central  
Peggy Gosse, Colby  
Karen Grosvold, Eau Claire North  
Mary Jacobson, Mondovi  
Becky Kelley, Bruce  
\*Diane Kozial, Tony Flambeau  
Carol Larson, Barron  
\*Gary Lukes, Neillsville  
\*Julie Parroni, Eau Claire Central  
Larry Ross, Osseo  
\*Rhonda Schneebeli, Greenwood  
\*Allen Teter, Loyal  
\*Lureen Zmolek, Mondovi

### Green Bay District

\*Martha Blum, Bonduel  
Dave Devlin, Ashwaubenon  
\*Jane Gerndt, Suring  
Tom Henes, Green Bay Preble  
\*Kriss Hipp, Appleton East  
Peggy Kersten, Clintonville  
\*Debbie Massart, Luxemburg Casco  
Mary Mastalir, Kewaunee  
Jacob Neimeyer, Oneida Sacred Heart  
Sandra Niespodzany, Seymour  
Marqueritte Norby, New London  
\*Mary Jo Noth, Green Bay Southwest  
\*Ruth Provoznik, Algoma  
Lou Ann Rabideau, Appleton East  
Bruce Ramsdell, New London  
Joan Serrahn, Sevastapol

\*Debbie Williams, Cambria-Friesland  
Darleen Woodill, Fall River

Jane Stodola, Green Bay Preble  
\*Laura Vandenburg, Freedom  
\*Faith Vander Steeg, West De Pere  
\*Jean Weber, Algoma  
Jay Zahn, Sevastapol

### Kenosha District

\*Sue Barry, Wales Kettle Moraine  
Karen Behling, Waterford  
\*Jennie Brodel, Muskego  
\*Debbie Brown, St. Francis  
\*Pat Day, West Allis Central  
\*Linda Guzman, St. Francis  
\*Rae Hansen, Union Grove  
Holly McLeod, Wales Kettle Moraine  
\*Jan Meershaert, Cudahy  
Denise Page, Burlington  
\*Gina Pitts, Union Grove  
Mike Rindo, Muskego  
\*Jean Wiechert, East Troy  
\*Sue Wishaw, Racine Horlick

### La Crosse District

\*Linda Ames, Viroqua  
\*Brenda Bucholz, Ontario Brookwood  
Rose Dolle, Galesville Gale-  
Ettrick  
Becky Fanta, Hillsboro  
Kathleen Fischer, Whitehall  
Jill Johnson, Blair  
\*Marilyn Kinder, Wauzeka  
\*Dorothy Linrud, Westby  
\*Joyce Meyers, Cashton  
Sue Olsen, Onalaska  
\*Michael Pavlicin, Arcadia  
\*Jackie Pierce, Holmen

## La Crosse Continued

Janet Pulvermacher, Richland Center  
\*Rachel Sebranek, Mauston  
Gwen Roe, Onalaska  
Lynn Sveum, Westby

### Milwaukee District

\*Robin Bahr, Brookfield Central  
Jeanette Diedemar, Brown Deer  
\*Lori Dixon, Mequon Homestead  
\*Jed Dolnick, Nicolet  
\*Joan Duckman, West Bend East  
Ann Fuerbringer, West Bend East  
\*Steve Goves, Shorewood  
\*Barbara Griepentrog, Juneau Dodge-  
land  
Janice Knuth, Horicon  
Jane Krueger, Kewaskum  
James Lucius, Mequon Homestead  
\*Ed Magidson, Nicolet  
\*Carla Minsky, West Bend West  
Gary Ohm, Cedarburg  
\*Jim Nelson, Brookfield East  
\*Sharon Stier, West Bend West  
Debra Strigenz, Kewaskum

### Oshkosh District

\*Pat Basiliere, Oshkosh North  
Casi Baures, Markesan  
Mark Ferguson, Plymouth  
\*Terri Haedt, Omro  
\*Richard Hageman, Neenah Armstrong  
Ginger Kenneke, Valders  
Liz Livingston, Ripon  
\*Tom Maguire, St. Lawrence  
\*Thomas Meier, New Holstein  
\*Mike Palmquist, Oshkosh West  
\*Mike Plaisted, JFK Prep  
Margaret Ries, Lomira  
Karen Trauba, Lomira  
\*Dave Voss, Menasha St. Mary  
Joan Wenzel, Valders

## Platteville District

Bonnie Baker, Blanchardville  
Pecatonica  
Al Bauer, Spring Green River  
Valley  
\*Jody Bauman, Lancaster  
\*Madonna Bierman, Potosi  
\*Joan Deininger, Darlington  
Judy Feist, Fennimore  
Jill Gehn, Patch Grove West  
Grant  
\*Kerry Keen, Broadhead  
\*Zeena Kies, Platteville  
Cindy Knight, Reedsburg  
Cindy McCartney, Patchgrove  
West Grant  
Tim Nechvatal, Iowa-Grant  
\*Rick Reuter, New Glarus  
Chris Schickel, Cuba City  
Judy Schroeder, Fennimore  
Kris Thronson, Orfordville  
Steve Woodworth, Shullsburg

### River Falls District

Richard Ahlquist, Hudson  
\*Sherry Anderson, Frederic  
Nolan Chew, Osceola  
\*Linda Hop, Baldwin-Woodville  
\*Susan Kuselik, Baldwin-Woodville  
\*Lucy McNellis, Hammond St. Croix  
Falls  
\*Lynn Swanson, St. Croix Falls  
Donna Weisenbeck, Durand

### Stevens Point District

John Hagen, Rhinelander  
Sue Hedman, Port Edwards  
Irene Hornung, Marathon  
Jennifer Jagielo, Plainfield  
Jane Leonard, Wausau East  
Karen Marquardt, Rhinelander  
Nancy Sager, Manawa Little Wolf  
Mary Tietgen, Mosinee  
\*Sue Trachte, Pittsville

### Superior District

\*Tom Claire, Minocqua Lakeland  
\*Jim Gustafson, Maple Northwestern  
Laurie Koch, Butternut  
Greg Leaf, Maple Northwestern  
\*Michelle Matiski, Superior Senior  
\*Joe Mihalek, Ondossagon  
\*Nancy Nyara, Ondossagon  
David Smith, Minocqua Lakeland  
\*Jean Smith, Ashland  
Tim Tripp, Spooner  
\*Wayne Van Kauwenbergh, Superior  
Susie Weinberger, Butternut

### Whitewater District

\*Debbie Alder, Delavan-Darien  
\*Beverly Beal, Columbus  
Michael Dukin, Janesville WSVH

### Declamation

### Eau Claire District

Joann Baltus, Greenwood  
\*Jayne Blizzard, Fall Creek  
Joni Boss, Colby  
\*Kathy Boyea, Cadott  
Pam Bratsven, Osseo  
\*Bonnie Burke, Barron  
Cheryl Davidson, Eau Claire Homer  
De Long  
Ray Decker, Eau Claire Memorial  
\*Heidi Gladitsch, Bloomer  
Bev Gleiter, Alma  
\*Beth Hanson, Bloomer  
\*Laura Jaworske, New Auburn  
\*Toni Johnson, Eau Claire North  
\*Kim Kovachevich, Bruce  
Dirk Larson, Barron  
\*Margaret Laverty, Alma Center  
\*Patti Laverty, Alma Center  
Ana Lazcano, Eau Claire Central  
\*Ann Monson, Altoona  
\*Kathy Nygren, Eau Claire  
Memorial  
\*Cheryl Patrick, Tony Flambeau  
\*Mary Schieffer, Rice Lake  
\*Rita Schrock, Tony Flambeau  
\*Cindy Sperber, Cadott

\*Betty Geishirt, Deerfield  
Ron Hull, Whitewater  
\*Marcy Lueck, Watertown  
\*Charles Marousek, Madison Holy  
Name  
Chris Mol, Elkhorn  
Sue Nemec, Cambridge  
\*Sharon Peterson, Oregon  
\*Brenda Schuenke, Lake Mills  
Ellen Schutz, Cambridge  
\*Howard Swonigan, Madison  
Memorial  
Licia Terranova, Beloit Memorial  
Lisa Westerfeldt, Wisconsin  
Dells  
\*Terry Westover, Randolph  
Claire Zaiman, Madison Memorial  
Bob Zinke, Wisconsin Dells

### Green Bay District

Debby Anker, Clintonville  
\*Melody Crane, New London  
\*Sharon Ferrier, Ashwaubenon  
Jamie Guth, Algoma  
\*Mary Hensel, Clintonville  
\*Peggy Hoffman, Appleton West  
\*Lauri Jameson, Green Bay  
Southwest  
John Jensen, Denmark  
\*Kathy Keyser, De Pere  
Pam Madsen, Suring  
\*Leigh Morgan, Oconto Falls  
\*Sara Nerenhausen, Washington  
Island  
\*Nancy Nusbaum, De Pere  
Mary Pappas, Green Bay Preble

### Green Bay Continue

\*Renee Parker, Florence  
Joan Parma, Green Bay Southwest  
Bill Poplaski, Green Bay East  
\*Mary Jo Prunty, Wrightstown  
\*Roxanne Rusch, Kimberly  
\*Sue Shefka, Appleton East  
Mary Steeber, Algoma  
\*Mitzi Swim, Green Bay Preble  
\*Kurt Thomas, Fish Creek Gibraltar  
Michele Tveten, Fish Creek  
Gibraltar  
Lloyd Wright, Kewaunee  
Debbie Ziver, Appleton East

### Kenosha District

\*Dorae Annis, East Troy  
\*Barb Bayer, Milwaukee Pius XI  
Sue Burke, South Milwaukee  
\*Carol Burns, Union Grove  
Ann Dettmering, East Troy  
\*Sherri Eisenmann, Greenfield  
Whitnall  
\*Sue Hammer, Greendale  
Tim Hazen, Salem Central  
\*Janine Hunter, Kenosha Bradford  
June Keeku, Union Grove  
Kathy Kreuser, Muskego  
Mary Kaye Lawson, Greenfield  
Whitnall  
\*Paul Neary, St. Francis  
Ann Schultes, New Berlin  
\*Carol Schlitz, Franklin  
\*Sue Schmidt, Muskego  
\*Nancy Reese, West Allis Nathan Hale  
Patti Rozinski, Mukwonago

### La Crosse District

\*Pete Bougie, Onalaska  
Toni Broodstone, Onalaska  
\*Barb Burmeister, Cochrane-Fountain  
City  
\*Patrick Clarkin, La Crosse Logan  
Janet Eide, Viroqua  
Marcy Garner, Hillsboro  
\*Beverly Giese, Ontario Brookwood  
Marilyn Harris, Hillsboro  
\*Sarah Hayden, La Crosse Central  
Delaine Hoff, Galesville-Ettrick  
\*David Hughes, La Crosse Aquinas  
\*John Jacobson, Blair

\*Debbie Liefke, Ontario Brook-  
wood  
Faith Marsolik, Independence  
\*Peggy Roush, Sparta  
\*Jane Sevais, West Salem  
Gale Spangler, Richland Center  
Janet Walby, Viroqua  
Diane Walders, Arcadia

### Milwaukee District

Robin Beir, Kewaskum  
Steve Belling, Brookfield Wis-  
consin Hills Junior  
\*Rae Chalmers, Grafton  
\*Rosie Delwiche, West Bend East  
\*Maureen Dempsey, West Bend East  
\*Erin Dunne, Brookfield East  
Nancy Frank, Cedarburg  
Mary Beth George, Whitefish Bay  
\*Yvan Giralte, Mequon Homestead  
Lorrie Keegstra, Beaver Dam  
Senior  
\*Dave Kuhns, Nicolet  
\*Beth McGlyn, Brookfield Central  
Jan Myers, Cedarburg  
\*Kim Opalawski, Milwaukee James  
Madison  
\*Claudia Pawlowski, Milwaukee  
John Muir  
\*Nancy Prober, Kewaskum  
Jan Rosenthal, West Bend West  
\*Mary Ryan, Mequon Homestead  
\*Marion Schmitt, Hartford  
Sally Schwartz, Oconomowoc  
Senior  
Phoebe Wirth, Nicolet

### Oshkosh District

\*Jan Armstrong, Neenah Armstrong  
Kris Bartlet, Waupun  
Deb Beernsten, Manitowoc-  
Lincoln  
\*Lynn Berndt, Winneconne  
\*Randy Brachmann, Fond du Lac  
Goodrich  
\*Sue Campbell, Oshkosh West  
\*Kathy Coenen, Brillion  
\*Tom Doctor, Menasha St. Mary  
Tony Dorosoro, JFK Prep  
\*Joadie Drake, Elkhart-  
Glenbeulah

## Oshkosh Continued

\*Anne Good, Two Rivers  
\*Liz Guenveur, Kiel  
\*Jeff Huelsbeck, St. Mary-  
Menasha  
Kay Kresbach, Kiel  
\*Kathy Laak, Sheboygan North  
Lisa Landvatter, Winnebago  
Lutheran  
Marcia Luecke, Howards Grove  
\*Cindy Luedtke, Lomira  
\*Howard McGee, St. Lawrence  
Kathy Pethan, Elkhart-  
Glenbeulah  
\*Larry Roeming, Rosendale Laconia  
\*Mary Schmidt, Lomira  
\*Sue Stangby, Fond du Lac Goodrich  
\*Deborah Syring, Chilton  
Penny Szatkowski, Green Lake  
\*Rhonda Wahoske, Ripon  
\*Sue Walker, Chilton  
\*Lisa Waniger, Mishicot

## Platteville District

Margie Bolton, Hazel Green  
\*Lissa Carbone, Potosi  
Colleen Curley, Lancaster  
\*Carol Digman, Hazel Green  
\*Terri Elmer, Albany  
\*Donna Faber, Spring Green  
Sally Grindeman, Highland  
Connie Harbough, Cassville  
Mary Hartung, Mineral Point  
\*Mary Jeffrey, Platteville  
\*Lynn Marty, Mount Horeb  
Barb McNett, Cassville  
\*John Orton, Lancaster  
Nadine Patchin, Platteville  
\*Kathy Peterson, Brodhead  
\*Jane Ploessl, Bloomington  
\*Rita Repka, Reedsburg  
\*Margie Schmidt, Bloomington  
\*Lori Stauffer, South Wayne  
\*Debbie Stoycheff, Shullsburg  
Jeanne Waelchli, Monticello  
\*Sue Wanless, Reedsburg

## River Falls District

Chris Bingea, Clear Lake  
Becky Briggs, Frederic  
\*Jay Churchill, Elmwood  
Jeanine Fouks, New Richmond  
\*Nancy Jensen, Osceola  
\*Susan King, Durand  
\*Lori Luckwaldt, Baldwin-  
Woodville  
\*Kevins Peters, Baldwin-  
Woodville  
\*Shelley Rusk, Milltown Unity  
\*Julie Schlosser, Durand  
\*Marsha Ward, River Falls

## Stevens Point District

Nancy Aman, Eagle River  
Allesandra Belter, Wautoma  
Beth Bliss, Wausau East  
\*Jan Brandenburg, Marion  
Jerrie Breseman, Almond  
Diane Dassow, Wisconsin Rapids  
Assumption  
\*Anne Davis, Mosinee  
Kathy Dean, Wausau West  
Jill Dimka, Port Edwards  
Sue Harrell, Spencer  
Kathy Hendrick, Mosinee  
Judy Heneghan, Schofield  
Tammy Kennedy, Rib Lake  
Lana La Crosse, Rhinelander  
Marla Levandowski, Stevens  
Point Senior  
Shelly Lien, Iola-Scandinavia  
\*Therese Mortenson, Wittenberg-  
Bernamwood  
Kathy Nolan, Marion  
\*Sue Pirsig, Antigo  
Cyndee Retzlaff, Wisconsin  
Rapids Assumption  
Jean Schultz, Crandon  
\*Leslie Singco, Abbotsford  
Linda Szews, Wittenberg-  
Birnamwood  
\*Vicki Wallace, Merrill  
Linda Witucki, Athens  
Cindy Woodward, Wild Rose

## Superior District

Nancy Anderson, Spooner  
Jill Broadfoot, Spooner  
Sue Bronson, Superior Senior  
Debbie Deckert, Butternut  
\*Kim Dymesich, Ondossagon  
\*Jody Gustafson, Prentice  
Laura Heytens, Maple Northwestern  
\*Barbara Johnson, Ashland  
Louise Kadrluk, Butternut  
Jackie Kendall, Hayward  
\*Kathy Kending, Superior Senior  
\*Craig Lewis, Hurley  
Yvonne Lindgren, Maple Northwestern  
Laurie Longtine, Hayward  
Deborah Lowe, Washburn  
Julie Pabich, Glidden  
\*Julie Polyglase, Superior Central  
Julie Sisto, Superior Central  
\*Laurie Thorssen, Solon Springs  
Melissa Vuchetich, Park Falls  
Lincoln

## Whitewater District

\*Bruce Barry, Stoughton  
Mary Bartlett, Madison Memorial  
Richard Beck, Madison Holy Name  
Margaret Both, Madison Edgewood  
Rychie Breidenstein, Delavan-  
Darien  
Christy Bubolz, Rio  
\*Rene Firari, Watertown  
\*Jayne Foster, Walworth Big Foot  
Liz Gee, Baraboo  
\*Bridget Hughes, Pardeeville  
\*Jim Klein, Fort Atkinson  
\*William Marden, Madison Holy  
Name  
\*Mary Miller, Fall River  
\*Chris Olson, Delavan-Darien  
\*Becky Powell, Baraboo  
\*Chris Ruegg, Walworth Big Foot  
Nancy Sapia, Fort Atkinson  
Marie Schroeder, Marshall  
\*Eleanor Sents, Whitewater  
\*Chris Seubert, Randolph  
Joanne Verri, Elkhorn  
\*Connie Waddell, Marshall  
Gregory Wood, Evansville  
\*Lorna Zach, Oregon

## Poetry Reading

## Eau Claire District

\*Patti Benson, Bruce  
Dan Beyerl, Colby  
Lynn Bosben, Colfax  
Linda Diers, Neillsville  
John Federiuk, Eau Claire North  
\*Margaret Fravert, Greenwood  
Kathy Frisbie, Eau Claire Memorial  
\*Julie Jerome, Barron  
Diane Joyce, Loyal  
Sandi Klages, Chippewa Falls  
McDonell  
Janet Leitner, Rice Lake  
Annette Matson, Barron  
Jane McClellan, Menomonie Senior  
\*Bob Meyer, Loyal  
\*Lynn Meyer, Neillsville  
\*Betty Morning, Bloomer  
\*Kristen Ottum, Bruce  
\*Rachel Paulson, Chetek  
Dominic Pentimone, Gilman  
Kevin Peuse, Fall Creek

\*Cathy Poppe, Altoona  
Vicki Preuss, Chippewa Falls  
Senior  
\*Bobette Rongstad, Osseo  
Jackie Seuss, Elk Mound  
Sheree Simonson, Eau Claire  
Memorial  
Debbie Spath, Stanley-Boyd  
Mary Sullivan, Rice Lake  
Brenda Turnquist, Greenwood

## Green Bay District

Joyce Anderly, Lena  
\*Dave Beaudry, Oneida Sacred  
Heart  
\*Robin Casler, Kimberly  
Mary Denor, Denmark  
Lori Flaeshel, Green Bay  
Bay Port  
Audrey Graetz, Coleman

### Green Bay Continued

\*Jane Haegele, Algoma  
Liz Hannon, West De Pere  
\*Julie Hein, Seymour  
J. P. Ingold, Green Bay Southwest  
Rhonda Kandravi, West De Pere  
Pat Keenan, Florence  
\*Ken Kieper, Florence  
Cindy Klevesahl, Bonduel  
\*Debbie Klukas, Coleman  
\*Becky Meikle, Sevastopol  
Kathy Mendels, Appleton West  
\*Kimberly Meyers, Green Bay Southwest  
Mary Norby, New London  
\*Maureen Policello, Crivitz  
Patti Pankow, Hortonville  
Barb Pociask, Wausaukee  
Karen Rass, Luxemburg-Casco  
\*Anna Rodriguez, Peshtigo  
\*Howard Schmitt, Appleton East  
Becky Stewart, Oconto  
Dan Strauss, Oneida Sacred Heart  
Mary Trachte, De Pere  
Maureen Trembl, De Pere  
\*Cheryl Wagener, Sevastopol  
\*Amy Zimmerman, Algoma  
Patti Zuches, Bonduel

### Kenosha District

Kathy Becker, Greenfield Whitnall  
Diane Eichelberg, Salem Central  
Cindy Gromowski, West Allis Nathan  
Hale  
\*Sue Just, Waterford  
\*Sandy Kalashian, West Allis Nathan  
Hale  
Karen Kovacic, Greendale  
\*Daryl Kroken, Burlington  
Joel Nelson, Waterford  
\*Bridget McDonough, Waukeshaw  
Memorial  
Pete Matusnak, Milwaukee Boy's Tech  
Sue Michalski, Cudahy  
Cindy Pelzek, Franklin  
Kathy Plevak, St. Francis  
Debbie Punches, Wales Kettle Moraine  
Renee Raffini, Racine Case  
\*Lynn Repech, Greendale  
Carrie Ryan, Waukesha Memorial  
Sue Schill, Muskego  
\*Carol Semrad, West Allis Nathan Hale

### La Crosse District

Carleen Angst, Arcadia  
\*Susan Balmer, West Salem  
\*David Erwin, Hillsboro  
\*Kathy Grover, Ithaca  
\*Kim House, Tomah  
Mary Kostner, Arcadia  
\*Eric Larson, Mauston  
Deanne Mentzel, New Lisbon  
Amy Nelson, Westby  
Debbie Nusek, Independence  
Dave Onsrud, Holmen  
Penny Steege, Melrose-Mindoro  
Debbie Stout, Westby  
Sue Sullivan, Viroqua  
Jeanne Williams, La Crosse  
Aquinas

### Milwaukee District

\*Jane Bachhuber, Mayville  
\*Nancy Becker, Juneau Dodgeand  
Mary Kay Danner, Divine Savior  
\*Diane Foerster, Hartford  
\*Chris Kain, Brookfield East  
\*Ruth Markowski, Port Washington  
Michelle Moore, West Bend East  
\*Mary Mulvaney, Hartland-  
Arrowhead  
\*Karen Patterson, Mayville  
\*Jane Prescott, Wauwatosa East  
\*Connie Schauer, Brookfield  
Central  
\*Lisa Stern, Whitefish Bay  
Kathy Stoffel, West Bend West  
Barbara Toles, Milwaukee West  
Division  
\*Jill Vander Schaaf, Horicon  
Barbara Wachs, West Bend West  
Sue Wendorff, Brown Deer  
\*Pam Wilson, Milwaukee James  
Madison  
Mary Wirth, Cedarburg  
\*Pearl Zager, West Bend East

### Oshkosh District

Marilyn Birling, Menasha St. Mary  
\*Debbie Cramblet, Oakfield  
\*Joel Frank, St. Lawrence  
Don Kesler, Hilbert  
\*Laurie Lemmenes, Sheboygan South  
\*Lynal Lochner, Berlin  
Mark Machkovech, Westfield  
Jean Murphy, Princeton  
Tim Palmquist, Oshkosh West  
\*Lynn Paulus, Manitowoc Holy Family  
\*Lynn Pence, Winneconne  
\*Barbara Preder, Sheboygan Falls  
\*Dawn Randall, Oakfield  
\*Diane Rank, Elkhart-Glenbeulah  
Carol Schetter, Elkhart-Glenbeulah  
\*Linda Snyder, Neenah Armstrong  
Sue Streeter, Green Lake  
Sandy Tewinkle, Sheboygan North  
Keith Wolf, St. Lawrence

### Platteville District

\*Joy Breen, Patchgrove West Grant  
Jacci Buehl, Monticello  
Cindy Cory, Monticello  
\*Nancy Cleaveland, Albany  
Luanne Eberle, Spring Green  
\*Mary Eddy, Lancaster  
\*John Esser, Platteville  
Linda Gertsch, South Wayne  
\*Barb Gratton, Blanchardville  
Pecatonica  
\*Nancy Hatfield, Belmont  
\*Judy Heiar, Bloomington  
\*Cheryl Holliday, Platteville  
\*Julie Jones, Spring Green  
Amy Krogman, Cassville  
Linda Lampman, Bellville  
Pat Lolwing, Potosi  
Debbie Luebker, Boscobel  
\*Barb Marty, Monroe  
Bonnie Montgomery, Reedsburg  
Mary Roethke, Blanchardville  
Melanie Schlettler, Broadhead  
\*Debbie Slaats, Cuba City  
Mary Valley, Prairie du Chien  
Ann Vodak, Shullsberg  
Georjean Weaver, Darlington

### River Falls District

Earl Blodgett, Boyceville  
\*Kathy Bloom, Milltown Unity  
\*Robin Cross, St. Croix Falls  
\*Laura Delaplain, River Falls  
\*Steve Hoeser, Durand  
Jan Huppert, Ellsworth Senior  
\*Noli Muller, Milltown Unity  
\*Theresa Sperger, Durand  
Margaret Timmerman, River Falls  
Peter Torkelson, Baldwin-  
Woodville  
\*Celeste Yanisch, Ellsworth  
Senior

### Stevens Point District

Lillian Bauch, Wittenberg-  
Birnamwood  
\*Mary Beyer, Marion  
\*Lydia Brooks, Waupaca  
Jean Buchanan, White Lake  
Margie Check, Rosholt  
\*Jeff Cismoski, Wautoma  
\*Liz Davis, Scholfield Everest  
\*Jody Feldman, Stevens Point  
\*Marilyn Fermanich, Antigo  
Liz Frawley, Wausau East  
Margaret Gilbert, Wild Rose  
\*Cindy Grover, Stevens Point  
\*Marjean Kibbel, Marshfield  
Senior  
\*Sharon Kincaid, Port Edwards  
Mike Kort, Adams-Friendship  
Amy Laatsch, Tigerton  
Darlene Machtan, Marshfield  
Carolyn Michie, Rhinelander  
Debbie Nall, Spencer  
Lisa Nepper, Wisconsin Rapids  
West  
\*Karen Olstad, Rosholt  
Kathy Ostrowski, Wittenberg-  
Birnamwood  
Kathy Raith, Elcho  
\*Helen Schafer, Pittsville  
Kathy Stoffel, West Bend West  
Mary Sullivan, Wisconsin Rapids  
Assumption  
Carol Themar, Medford  
Dorinda Van Beek, Schofield  
Everest  
Todd Whitmore, Mosinee  
Dawn Zirngibl, Abbottsford



### Superior District

Ruth Aho, Maple Northwestern  
Jean Bender, Superior Central  
Leann Birkholz, Ondossagon  
\*Mary Brounacher, Minocqua Lakeland  
Barb Flynn, Superior Central  
Rhonda Johnson, Philips  
\*Bill Kniffen, Bayfield  
Laurie Przybylski, Butternut  
Mike Schultz, Butternut  
Becky Simons, Maple Northwestern  
Diane Veda, Ashland  
Carol Witt, Glidden  
\*Kim Yelton, Minocqua Lakeland

### Whitewater District

Becky Albrecht, Watertown  
Northwestern  
\*Ellen Bellissimo, Middleton  
Deborah Braker, Randolph  
\*Kay Brunzell, Evansville  
Sally Carpenter, Stoughton  
\*Dave Dahlquist, Wisconsin Dells

### Prose Reading

### Eau Claire District

\*Cathy Cordahl, Menomonee Senior  
Brian Fellard, Colfax  
Sue Friedman, Chippewa Falls  
McDonell  
\*Debbie Giese, Mondovi  
\*Becky Glanzman, Mondovi  
\*Camille Golden, Menomonee Senior  
Sonja Hanson, Eau Claire North  
Alison Jump, Cameron  
\*Marlin Kaeding, Fall Creek  
Brenda Kalina, Alma Center  
Carol Kern, Gilman  
\*Brenda Larrabee, Barron  
\*Kathy Lee, Bloomer  
\*Wanda Lind, Colfax  
Cindy Lindeau, Rice Lake  
\*Ann Lowry, Eau Claire Memorial  
Ann Melville, Fall Creek  
\*Renee Meyer, Cadott  
\*Russ Mueller, Colby  
Lori Jeanne Peloquin, Chippewa Falls  
\*Faye Phillips, Weyerhaeuser

Linda Dorsey, Madison Memorial  
Dorothy Gilbertson, De Forest  
\*Jelaine Henry, Whitewater  
Sheryl Johnson, Jefferson  
Laurie Laney, Elkhorn  
Kaye Laufenberg, Beloit Memorial  
Dan Leverenz, Whitewater  
\*Mark Lins, Madison Holy Name  
Dana Madalon, Baraboo  
Todd Morgan, Cambria-Friesland  
\*Lynn Peters, Beloit Turner  
Allison Smith, Lake Mills  
Leon Spicer, Pardeeville  
\*Karl Stoll, Madison West  
Patty Teed, Fort Atkinson  
\*Mark Thompson, Stoughton  
\*Judy Weishoff, Portage

### Green Bay District

Jim Anderson, Florence  
\*Mary Driessen, Kaukauna  
\*Sue Gigot, Luxemburg-Casco  
\*Kim Grummer, Appleton East  
\*Marilyn Hansen, Pembine  
Doris Hieronimczak, Pulaski  
Debra Huens, Green Bay East  
\*Laurie Ihde, Oconto

### Green Bay Continued

\*Betty Jerusalem, Appleton East  
\*Kathy Locy, New London  
Jean Pennington, Wausaukee  
\*Robert Sadowski, Coleman  
\*Julie Salutz, Green Bay Southwest  
Kay Schwendler, Algoma  
\*Linda Seiler, Fish Creek Gibraltar  
Mary Ellen Sekora, Denmark  
\*Tami Taylor, Suring  
\*Terri Tech, Seymour  
\*Marge Western, Oconto Falls  
Pam Witbro, De Pere

### Kenosha District

\*Donato Aiuppa, Muskego  
Peggy Bailey, Salem Central  
\*Tom Barranco, Racine Case  
\*Kathy Berzowski, St. Francis  
Nancy Buchs, East Troy  
\*Diane Carlson, Wilmot  
Mary Conner, St. Francis  
\*John Dutscheck, West Allis Central  
Eric Franzen, Milwaukee Boy's Tech  
Jane Halaska, Waukesha Memorial  
Kathy Haskins, East Troy  
\*Karen Jensen, Franklin  
Lois Krajnak, Cudahy  
\*Cathy Muhlenbeck, Salem Central  
\*Jan Nelson, Waterford  
Cindy Perrin, Oak Creek  
\*Mary Jo Rawson, Cudahy  
Debbie Reinke, West Allis Nathan  
Hale  
Jean Sterzinger, West Allis Nathan  
Hale  
\*Allen Woppert, Milwaukee Bay View

### La Crosse District

Bill Andre, Independence  
\*Chuck Bailey, Onalaska  
Dave Dornack, Onalaska  
\*Dan Duren, Cazenovia Weston  
\*Pat Eder, Hillsboro  
\*Janice Erwin, Hillsboro  
\*Joan Gander, Gays Mills North  
Crawford  
\*Ruth Haakenson, Westby  
Beth Hoffman, Bangor  
\*Jeanine Ipsen, La Crosse Logan

Lynette Johnson, Blair  
Toni Kettner, Gays Mills North  
Crawford  
\*Gary Logging, Melrose-Mindoro  
\*Marcia Luisi, Mauston  
Brian Melby, Ontario Brookwood  
Linda Nelson, Galesville Gale-  
Ettrick  
Joan Ofstedahl, Holmen  
\*Joann Scheppke, Melrose-Mindoro  
\*Merita Schollmeier, Arcadia  
\*Audrey, Schultz, Wonewoc  
\*Becky Solberg, Viroqua  
Mary Vangen, Desoto  
\*Bill Wiswall, Wauzeka  
Judy Wojchik, Cochrane-  
Fountain City

### Milwaukee District

\*Alison Adams, Menomonee Falls  
East  
Mary Becker, West Bend East  
Debbie Clark, Cedarburg  
Barbara Dahl, Juneau Dodgeand  
\*Jacquie Fox, Cedarburg  
Doria Haering, Shorewood  
Darlynn Hoare, Milwaukee James  
Madison  
\*Ginger Huebner, Beaver Dam  
Senior  
\*Deb Johnson, Beaver Dam Junior  
\*Regina O'Connor, Brookfield  
Central  
Luwanna Patrick, Wauwatosa West  
\*Debra Peters, Menomonee Falls  
East  
\*Sally Scott, West Bend West  
Pat Skwierawski, Nicolet  
\*Heidi Sorenson, Beaver Dam  
Senior  
\*Cheryl Stallworth, Milwaukee  
James Madison  
Damon White, Milwaukee John  
Muir  
\*Kim Zerbel, Brookfield East

### Oshkosh District

\*Cindy Baier, Oakfield  
Annette Broas, Neenah Armstrong  
\*Mary Burhop, Howards Grove  
\*Chris Dieringer, Ozaukee  
Robin Duenk, Cedar Grove  
\*Kim Goldberg, Ripon  
\*Bonni Grall, Menasha St. Mary  
Mary Hephner, Chilton  
\*Diane Johnson, Kiel  
Vicki Knackstedt, Winneconne  
Deborah Kohlman, New Holstein  
\*Marcia Lindeman, Winneconne  
\*Roberta Mortenson, Ripon  
\*Mary Neuser, Oshkosh North  
Ruth Reinl, Chilton  
\*Sue Scheberl, Lomira  
\*Mary Schlosser, Sheboygan North  
Sue Schneeberger, Princeton  
Kay Schnell, Brillion  
\*Pam Seiffert, Kiel  
Julie Sheahan, Manitowoc Holy Family  
Ken Snart, Green Lake  
\*Faith Weeks, Waupun  
Carolyn Wuenne, Winnebago Lutheran

### Platteville District

\*Bruce Bender, Fennimore  
\*Linda Birrenbach, Prairie du Chien  
Pat Burns, Shullsberg  
Bob David, Cassville  
\*Jeanne Duerst, Prairie du Chien  
\*Sue Eckstein, Cassville  
Phoebe Grant, Mineral Point  
Debbie Hefty, Mount Horeb  
\*Maggie Hein, Monroe  
\*Debbie Hodel, Bellville  
\*Barb Kruser, Hazel Green  
\*Susan Lowell, Lancaster  
\*Patti Meyer, Iowa-Grant  
\*Connie Milks, Broadhead  
Theresa Mottley, Darlington  
\*Ruth Munz, Highland  
Joni Ogletree, Dodgeville  
\*Joan Ruppert, Spring Green  
Luann Seffrood, South Wayne  
Blackhawk  
John Sorenson, Reedsburg  
\*Sherri Taylor, Bloomington  
\*Karleen Throni, Barneveld  
\*Kim Van Matre, Darlington

\*Ann Wallin, Lancaster  
\*Pam Welz, Monroe  
\*Sue Wilberding, Cuba City  
\*Mitzi Zimmerman, New Glarus

### River Falls District

\*Tim Campbell, Ellsworth Senior  
\*Kathy Coozenoy, St. Croix Falls  
\*Bobbie Dusek, River Falls  
\*Byron Erickson, Clear Lake  
\*Richard Gregerson, Baldwin-Woodville  
\*Cindy Hulverson, Durand  
\*Debbie Imrie, New Richmond  
Frank Maves, Elmwood  
\*Georgeanna Rivard, Glenwood City  
\*Nancy Sauerman, Hammond  
\*Sandy Snelson, Webster  
\*Mary Snyder, Glenwood City  
T. J. Temple, River Falls  
\*Sherry Walker, Baldwin-Woodville

### Stevens Point District

\*Cindy Backer, Wausau East  
\*Jayne Davis, Mosinee  
Mary Dean, Weyauiga  
\*Donna Dirkx, Tomahawk  
\*Ray Dobeck, Stevens Point  
Brenda Falk, Adams-Friendship  
Judy Gear, Plainfield  
\*Rosanne Greunke, Auburndale  
\*Scott Hanson, Rhinelander  
Susan Hatch, Pittsville  
Paul Hotvedt, Wautoma  
\*Mary Beth Justen, Mosinee  
Bruce Krenz, Merrill  
\*June Kriesel, Rhinelander  
\*Teresa Laufenberg, Almond  
\*Kathy Michalski, Edgar  
\*Kathy Nimitz, Wisconsin Rapids Assumption  
Karen Peterson, Athens  
Terri Rashke, Amherst  
\*Jane Sarnowski, Wild Rose  
\*Terry Schlender, Marion  
Kim Schulta, Schofield Everest

### Stevens Point Continued

\*Carolyn Susor, Schofield Everest  
\*Diane Vandorf, Elcho  
\*Michelle Vingert, Spencer  
Sue Weiler, Auburndale  
Joan Wheeler, Stevens Point  
\*Keith Williams, Port Edwards  
\*Karen Wood, Wisconsin Rapids  
Lincoln  
Mary Zoglman, Gresham

### Superior District

Marie Bushong, Mellen  
Curtis Carlson, Prentice  
Sandy De Foe, Ondossagon  
Jo Ann Dessl, Park Falls  
Cindy Erickson, Bayfield  
\*Kathy Erskine, Superior  
\*Cassie Fleming, Port Wing  
\*Beth Foytik, Phillips  
\*Rita France, Prentice  
\*Jean Gustafson, Maple Northwestern  
Wendy Isham, Park Falls  
\*Carol Kopan, Butternut  
\*Sherri Larson, Spooner  
\*Wendy Rand, Spooner  
Barb Ryan, Superior Central  
\*Theresa Thomas, Superior Senior  
Mary Wester, Maple Northwestern

### Whitewater District

Debbie Baney, Cambria-Friesland  
\*Jane Bouslough, Lake Mills  
\*Melva Brown, Randolph

### Eau Claire District

\*Barron. . . . . You're a Good Man, Charlie Brown  
Roger Cox  
Curtis Hanson  
Sue Hollister  
Reid Perry  
Lisa Zamzow

Cynthia Carlson, Watertown  
\*Mary Crave, Beloit Turner  
\*Connie Duesler, Middleton  
Theresa Dushek, Poynette  
Deb Gransee, Delavan-Darien  
\*Gail Griffin, Fort Atkinson  
John Hamm, Wisconsin Dells  
\*Anne Hemlock, Whitewater  
Beverly Hiley, Columbus  
Mary Hoehne, Fort Atkinson  
\*Steve Holman, Stoughton  
Holly Harless, Marshall  
\*Jayne Hubacher, Evansville  
\*Carol Hughes, Fall River  
Dawn Kaufman, Wisconsin Dells  
\*Debbie King, Baraboo  
\*Cindy Leppert, Waunakee  
\*Karen McVeigh, Lake Geneva  
Badger  
Erin Maloney, Sun Prairie  
Kathy Nostrant, Delavan-Darien  
Sue Oldenberg, Clinton  
\*Jayne Peters, Elkhorn  
\*Laura Peterson, Cambria-Friesland  
\*John Riege, Madison La Follette  
\*Kris Sauer, Rio  
Cindy Stock, Cambridge  
\*Margie Thompson, Stoughton  
Carrie Travis, Lake Geneva  
Badger  
Terri Winch, Oregon  
Ruth Witzeling, Madison  
Edgewood

### Play Acting

\*Bloomer. . . . . Fumed Oak  
Jayne Hable  
John Kane  
Brenda Ruffledt  
Mike Schlender  
Sue Stockman

# Eau Claire District Continued

\*Colby. . . . . Death Knocks  
Mike Lamont  
Dale Mueller

\*Cumberland . . The Effect of Gamma  
Rays on Man-in-the-  
Moon Marigolds

Barbara Ranallo  
Debbie Richter  
Patty Steege

\*Eau Claire Central . This Property  
is Condemned  
John Speros  
Wendy Strang

\*Eau Claire North . . . . . Macbeth  
Sandra Berndt  
Lee Christensen  
Tim Howard

Greenwood. . . . . Blue Roses  
Mark Larson  
Diane Zepaltes

Menomonie Junior. If Men Played  
Cards as Women Do

Mike Gane  
Greg Gauthier  
Tim Schneider  
Dean Sommerfeld

Menomonie Senior. . . . . Liliom  
Barbara Chastan  
Heidi Houser  
Rod Long

\*Owen-Withee . . Of Mice and Men  
Terry Nirva  
Mel Rohland

\*Rice Lake . . . Lovers "Winners"  
Kurt Christianson  
Kathy Lawton  
Roxy Meggars  
Bob Nielson

Stanley-Boyd. . The Odd Couple  
David Benzchawal  
Mark Simonson

## Green Bay District

\*Algoma. . . Spoon River Anthology  
Craig Bero  
Becky Blahnik  
Sue Bouche  
Carole Gorz  
Bill Leahy

Appleton East . . . . . Uncle Vanya  
Ann Guyette  
Brent Johnson  
Barb Kuehmsted  
Babs Malchow  
Paul Schmitt

Bonduel. . . . . Inherit the Wind  
Ken Gehm  
Bill Mehlhorn  
Layne Pitt  
Louis Van Dinter  
Bryan Wussow

\*Clintonville. . . . . Johan  
Dennis Glocke  
Steve Sengstock  
Jeanne Tooley

Green Bay Bay Port . Pure as the  
Driven Snow

Tom Campbell  
Grant Destache  
Pat Guara  
Cindy McDonald  
Jerry Ozarowicz

Green Bay Lombardi. Box and Cox  
Jean Covi  
Brad Czech  
Rob Wendland  
David Windmuller

\*Green Bay Preble. . How He Lied  
to Her Husband

Scott Krider  
Debbie Pierquet  
Tom Sherrell

# Green Bay District Continued

Green Bay Southwest. . Don't Drink  
the Water

Ray Goodner  
Tom Jacobs  
Tom Stout  
Laurie Vanness  
Vicki Vanness

\*Kewaunee . . Once Upon a Playground

Josie Gregorich  
Sue Hockensmith  
Patty Kotyza  
Colleen Reinke  
Debby Richmond

\*Kimberly . . . . . The Odd Couple  
Kevin McSorley  
Jim Van Beek

Luxemburg-Casco . . A Taste of  
Honey

Pat Behrens  
Debbie Marcelle  
John Ries  
Randy Seidl  
Joe Thibaudeau

\*Niagara . . . . . Fog

Patty Hendricks  
Larrie Mayer  
Susie Russ

Sturgeon Bay. . Barefoot in the  
Park

Bob Larson  
Nancy Tlachac

\*West De Pere. . . . The Sandbox

Jeff Hoerning  
Jim Olmstead  
Pat O'Mally  
Linda Spang  
Lois Willems

## Kenosha District

Burlington . Our Hearts Were Young  
and Gay

Ross Carr  
Helen Petracchi  
Mike Wroblewski

Greenfield Whitnall. . . The Blind

Sue Beattie  
Cindy Lamke  
Mary Lingle  
Bruce Wantuch  
Toni Zdeb

\*Kenosha Bradford . . . A Thousand  
Clowns

Bill Belongia  
Randy Gunderson  
Perry Lehrke  
Kitty Zanin

Milwaukee Pius XI . . . Company

Kathy Haberman  
Bob Jones  
Ric Weber

\*Mukwonago . Come Blow Your Horn

Chris Maxfield  
Kevin McGee

\*Muskego . . . Jacob Comes Home

Darlene Lange  
Andrea Nestor  
John Rindo  
Joan Snogren  
Walton Stanley

\*New Berlin. . . . Kissing Sweet

Dave Cartwright  
Jeff Geppert  
Barb Ginther  
Mary Kolb

# Kenosha District Continued

Oak Creek. . . . . The Boor  
Gregg Gour  
Cheryl Walter  
Randy Zaporski

Racine Horlick . . . . . Medea  
Lisa Bohon  
Kelly McLeod  
Kurt Ollmann

Union Grove. . . . Flounder Complex  
Rose Schattner  
Jean Welsh

## La Crosse District

\*Arcadia. . . . . This Property is  
Condemned  
Bea Benusa  
Cathy Chambers  
John Gamoke

Bangor. The Diary of Adam and Eve  
Sue Kapanke  
Bruce Roberts  
Curt Wuensch

Holmen . . . . . The Odd Couple  
Blaine Haefner  
Curt Kennedy

Waterford. The Effect of Gamma  
Rays on Man-in-the  
Moon Marigolds

Lori Davison  
Liz Dorf  
Meg Eder

Waukesha Catholic Memorial. No-  
body Sleeps

Margaret Crites  
Gwen Gogin  
Madeline Hammel  
John Lenchek

La Crosse Aquinas. This Property  
is Condemned

Patty Bentz  
Liz Brindley

La Farge. . . . . Not Enough Rope  
Wayne Marshall  
Debra Parr  
Marcia Wemmer

\*Mauston . . . . . I'm Herbert  
Mary Petrowitz  
Ken Wiegers

Westby. . . . . The Tiny Closet  
Scott Meyer  
Janet Rognstad  
Teresa Rude

## Milwaukee District

\*Cedarburg. . . . . Lion in Winter  
Dave Maier  
Tony Massaro

Horicon. . . . . Inherit the Wind  
Jan Burhans  
Deb Day  
Bud Gadow  
Steve Knop  
Wayne Vorpahl

Juneau Dodgeland. Of Mice and Men  
Dick Evans  
Andy Hartman

\*Kewaskum. . . . And Mrs. Reardon  
Drinks a Little

Kathy Baumhardt  
Mary Mc Namara  
Debbie Schowalter  
Luanne Werhanowicz

\*Mequon Homestead. The Elephant  
Flamingo

Marc Hattel  
Jan Helgeson  
Sue Pipkorn

# Milwaukee District Continued

\*Milwaukee James Madison. . . . This  
Property is Condemned

Robert Denemark  
Barbara Shinnors

Milwaukee Riverside. . The Sandbox  
Janice Bertolini  
Bobby Dupree  
David Kraemer  
Margaret Schneider  
Margret Schulz

\*Oconomowoc Senior. . The Apple-Bit  
Mark Jozwik  
Sue Wichman

Pewaukee. This Property is Condemned  
David Czech  
Kathi Densow

\*Port Washington. . . . . Lovers

Amy Bley  
Wes Decker  
Kim Weiss  
Michele Wieland

West Bend East. Barefoot in the  
Park

Steve De Bravo  
Bill Johnson  
Marie Krier

\*West Bend West. . . Aria Da Capo  
Doug Chantelois  
Bob Falk  
Mary Griffin

## Oshkosh District

Elkhart-Glenbeulah. . Butterflies  
are Free

Mike May  
Jeanne Sipper

JFK Prep . . . . . Who's Afraid of  
Virginia Woolf

Dawn Dimas  
Mark Hessel

Kohler . . . . . Blithe Spirit  
Becky Erickson  
Joann Hart

\*Lomira . . . . . Rebecca

Sue Kuhl  
Greg Raube  
Bev Rucks

Manitowoc Lincoln. The Fantasticks

Dave Coons  
Dave Cummings  
Kurt Jaehning  
Mike LeClair  
Ken Morgan

\*Menasha St. Mary. . The Children's  
Hour

Julie Demerath  
Lynda Mecikalski

Neenah Armstrong. The Effect of  
Gamma Rays on Man-in-the-  
Moon Marigolds

Diane Hook  
Betsy Lambert  
Patti Snyder

\*Reedsville. . . . My Lost Saints

Debbie Olejniczak  
Bob Remiker  
Vicki Weber  
Patti Willman

St. Lawrence. . . . A Man for All  
Seasons

Chick Klein  
Steve Zammit

\*Sheboygan North. The Importance  
of Being Earnest

Jay Holman  
Lynn Rothe  
Don Whitson  
Joyce Young

\*Waupun . . . . . The Bad Seed

Kathy Kaminski  
Sue Vande Kamp

# Platteville District

\*Darlington . . . . Winnie the Pooh  
Stephanie Craig  
Bruce Geissbuhler  
Sally Olson  
Joanne Rasmussen  
Jean Salis

\*Monroe. . . . The Killing of Sister George  
Bea Benkert  
Carol Swiggum

Monticello. . . . Of Mice and Men  
Ken Stauffer  
Brett Winzenreid

\*Mount Horeb . . The Glass Menagerie  
Melanie Alley  
Ralph Rexroat

\*Platteville. . . . Antigone  
Bill Langmeier  
Scott Patchin  
Kathy Saloutos  
Ann Steidinger

\*Reedsburg Webb . Ah Wilderness  
Mary Hillman  
Peter Knight

Spring Green . . Teahouse of the August Moon  
Myron Alt  
Tom Gorman  
Jerry Lord  
Dick Marklein  
Joe Silko

# River Falls District

\*Amery . . . . . Cyrano De Bergerac  
Mark Gilbertson  
Chris Stoddard  
Barb Waggoner

Baldwin-Woodville. . You're a Good Man, Charlie Brown  
Jim Detmar  
Patricia Mielke  
Robert Moe  
Robin Nelson  
Mark Willink

Boyceville. . The Marriage Proposal  
Linda Halvorson  
Warren Petryk  
Tim Stevens

\*Milltown Unity . Arsenic and Old Lace  
Harry Beck  
Pat Connally  
Kim Dahlstrom  
Stella Olson  
Kelley Swenson

\*River Falls. . . . Impromptu  
Dean Ammerman  
John Bunge  
Leslie Erickson  
Peg Mc Ewen

# Stevens Point District

Abbotsford. . . . . The Sandbox  
Laurie Mills  
Don Nelson  
Jim Polnaszek  
Burt Schauer  
Joan Suttner

Antigo . . . Last of the Red Hot Lovers  
Bob Cash  
Kristy Schroeder  
Andy Schweitzer

# Stevens Point District Continued

\*Mosinee. . . . . David and Lisa  
Mary Berkahn  
Don Boehm  
Susan Moss  
Rick Ruzga

Pittsville . . . . . Sham  
Steven Brice  
Donna Christian  
Gary Hubbard  
Robert Steltenpohl

Rhineland. . . The Curious Savage  
Marie Butkus  
Cindy Haglan  
David Nelson  
Gene Rohloff  
Kris Sheldon

\*Schofield. . . Where Have All the Lightning Bugs Gone  
Donele Habeck  
Mark Roselius

\*Spencer. . . . Butterflies are Free  
Charmaine Fryza  
Debbie Sawyer  
Ken Schultz  
Cindy Seehafer

Stevens Point P. J. Jacob. The Odd Couple  
Jon Bailift  
LuAnn Herr  
Jennifer Scalise  
Mark Snowden

Tigerton . . . Who's Afraid of Virginia Woolf  
Kathryn Aggen  
Michael Buss  
Larry Curtis  
Edward Groskopf  
Sherry Hille

Wabeno . . . . Love Hits Wilbur  
Pat Huberty  
Sandy Popp  
Cindy Reiningner

\*Waupaca. . . A Raisin in the Sun  
Sue Harvey  
Debbie Koch  
Margie Smith

\*Wausau West. . . Of Mice and Men  
Mark Narnke  
Vance Toivonen

\*Wittenberg-Birnbaumwood. . Hamlet  
Peggy Gunderson  
Mike Levandoski  
Bob Ostrowski  
Dave Shepel

# Superior District

Butternut. . . This Way to Heaven  
Kevin Koch  
Marka Mason  
Sally Teeters

Drummond . . . . . Fog  
Althea Nelson  
Debbie Pease  
Roxanne Rockenbach

Glidden. . . . The Still Alarm  
Jack Be Beau  
Larry Bucheger  
Jeff Eder  
Joe Schraufnagel  
Curt Zielke

\*Hayward. . . . . Impromptu  
Craig Jacobson  
Leah Swiler

Superior District Continued

\*Maple Northwestern . . . Pride and Prejudice

Ted Johnson  
Elaine Maki  
Mary Provost  
Marilyn Saker  
Mariys Westergrin

Ondossagon . . . The Glass Menagerie

Sam Dymesich  
Denis Merrill  
Mary Strycharski  
Cindy Strharsky

Park Falls . . . Tell Me That You Love Me Junie Moon

Jim Glick  
Gary Johnson  
Chris Knotts  
Robin Kolar

Spooner . . . Save Me a Place at Forest Lawn

Debbie Durand  
Marsha Kronlund

Winter . . . A Raisin in the Sun

Jodell Fadness  
Michael Martin  
Darlene Warner  
Janis Wiley

Whitewater District

\*Beloit Memorial. . . As You Like It

Beth Scholten  
Mary Beth Tatge

Cambria-Friesland . . . I'm Herbert

Andy Cupery  
Sharyn Kloostra

\*Delavan-Darien. Star Spangled Girl

Gary Brewer  
Jeff Graff  
Toni Lazzeroni

Elkhorn . . . . . Vile Bodies

Mark Brellenthin  
Candy Cervenka  
Mary Morrissey  
Larry Sweet

\*Fort Atkinson . . . Diary of Adam and Eve

Mike Aiango  
Bonnie Stedman

\*Jefferson . . . . . The Rainmaker

Karen Landowski  
Jeff Lavake

\*Lodi . . . . . The Ferry Boat

Pete Gasser  
Erin Mueller

Madison East . . . The Marriage Proposal

Bill Amos  
Beth Baltes  
Jane Kitchen  
Dennis Wogsland

\*Madison Holy Name. . . One Day in the Life of Ivan Denisovitch

Fred Ford  
Mark Pierce  
Mike Pierce  
Richard Reppen  
Clyde Schreiber

\*Middleton . . . . . Summertree

Dena Green  
James Hughes  
Sue Landes  
Dave Lawson  
Lee Verheyen

\*Oregon . . . . . Of Mice and Men

Jim Burns  
Ken Olson  
Cheryl Raha

Watertown . . The Glass Menagerie

Pam Quam  
Mary Timmerman

Whitewater District Continued

Whitewater . . . Oh Dad, Poor Dad

Steve Siebenaller  
Mae Lynn Sweet

Wisconsin Dells. . . Wait Until Dark

Lynn Sarnow  
Marcia Tollaksen

SPEECH: Summary of Participation, 1972-73

Eau Claire District. . . . . 44 Member Schools

<u>Local</u>	<u>Sub-District</u>	<u>District</u>	<u>State</u>
44 Schools	44 Schools	42 Schools	38 Schools
1249 Students	611 Students	343 Students	233 Students
		<u>Ratings</u>	<u>Ratings</u>
		233 A	123 A
		110 B	106 B
			2 C
			2 No show

Green Bay District. . . . . 53 Member Schools

<u>Local</u>	<u>Sub-District</u>	<u>District</u>	<u>State</u>
47 Schools	47 Schools	47 Schools	45 Schools
1554 Students	862 Students	424 Students	251 Students
		<u>Ratings</u>	<u>Ratings</u>
		251 A	143 A
		162 B	103 B
		11 C	5 No show

Kenosha District. . . . . 39 Member Schools

<u>Local</u>	<u>Sub-District</u>	<u>District</u>	<u>State</u>
32 Schools	32 Schools	30 Schools	29 Schools
739 Students	518 Students	304 Students	178 Students
		<u>Ratings</u>	<u>Ratings</u>
		190 A	79 A
		113 B	91 B
		1 C	1 C
		12 A's did not go on	7 No show

La Crosse District. . . . . 36 Member Schools

<u>Local</u>	<u>Sub-District</u>	<u>District</u>	<u>State</u>
36 Schools	36 Schools	36 Schools	35 Schools
948 Students	510 Students	270 Students	155 Students
		<u>Ratings</u>	<u>Ratings</u>
		155 A	73 A
		111 B	77 B
		4 C	1 C
			4 No show

Milwaukee District. . . . . 44 Member Schools

<u>Local</u>	<u>Sub-District</u>	<u>District</u>	<u>State</u>
44 Schools	38 Schools	36 Schools	35 Schools
684 Students	608 Students	305 Students	194 Students
		<u>Ratings</u>	<u>Ratings</u>
		194 A	118 A
		111 B	69 B
			1 C
			6 No show

Oshkosh District. . . . . 52 Member Schools

<u>Local</u>	<u>Sub-District</u>	<u>District</u>	<u>State</u>
52 Schools	52 Schools	48 Schools	45 Schools
1350 Students	820 Students	411 Students	214 Students
		<u>Ratings</u>	<u>Ratings</u>
		214 A	111 A
		194 B	91 B
		3 C	3 C
			9 No show

Platteville District. . . . . 38 Member Schools

<u>Local</u>	<u>Sub-District</u>	<u>District</u>	<u>State</u>
38 Schools	38 Schools	35 Schools	33 Schools
1018 Students	482 Students	290 Students	168 Students
		<u>Ratings</u>	<u>Ratings</u>
		168 A	104 A
		121 B	59 B
		1 C	3 C
			2 No show

River Falls District. . . . . 28 Member Schools

<u>Local</u>	<u>Sub-District</u>	<u>District</u>	<u>State</u>
28 Schools	28 Schools	27 Schools	21 Schools
662 Students	409 Students	212 Students	104 Students
		<u>Ratings</u>	<u>Ratings</u>
		104 A	72 A
		93 B	28 B
		15 C	1 C
			3 No show

Stevens Point District. . . . . 55 Member Schools

<u>Local</u>	<u>Sub-District</u>	<u>District</u>	<u>State</u>
51 Schools	51 Schools	46 Schools	46 Schools
1226 Students	692 Students	410 Students	210 Students
		<u>Ratings</u>	<u>Ratings</u>
		210 A	91 A
		191 B	103 B
		9 C	6 C
			10 No show

Superior District. . . . . 23 Member Schools

<u>Local</u>	<u>Sub-District</u>	<u>District</u>	<u>State</u>
23 Schools	23 Schools	22 Schools	22 Schools
738 Students	352 Students	207 Students	156 Students
		<u>Ratings</u>	<u>Ratings</u>
		156 A	57 A
		50 B	88 B
		1 C	9 C
			2 No show

Whitewater District . . . . . 53 Member Schools

Local	Sub-District	District	State
53 Schools	53 Schools	48 Schools	45 Schools
1174 Students	659 Students	401 Students	216 Students
		Ratings	Ratings
		218 A	110 A
		179 B	95 B
		4 C	6 C
		2 A's did not go on	5 No show

Totals . . . . . 465 Member Schools

Local	Sub-District	District	State
448 Schools	442 Schools	417 Schools	394 Schools
11,342 Students	6523 Students	3577 Students	2079 Students
		Ratings	Ratings
		2093 A	1081 A
		1435 B	910 B
		49 C	33 C
			55 No show

# Non-WHSFA Events

Several Wisconsin schools participated beyond the state level in forensic competition. We are pleased to report their achievements here. The WHSFA extends its thanks to James Copeland of Marquette for supplying information on these national tournaments.

The National Catholic Forensic League tournament was held in June, 1973, at the Palmer House Hotel in Chicago. Wisconsin schools participating were Brookfield Central, Delavan, Madison Edgewood, Menasha St. Mary, Milwaukee Marquette, Milwaukee Pius XI, Monona Grove, and Oconomowoc. Milwaukee Marquette won the NCFL sweepstakes for a record fourth consecutive year. Wisconsin individual winners include David Dreis and Mark Miner of Marquette, first in cross-ex debate; Dean Richards of Marquette, first in boys' extemporaneous speaking; Tom Potter of Brookfield Central, second in student congress; and Matt Liedle of Marquette, fourth in original oratory.

The National Forensic League tournament was held at the University of Pittsburgh, also in June. Five hundred and forty students from 49 states participated.

Milwaukee Marquette attained another record accomplishment in winning the NFL sweepstakes for the third consecutive year.

Wisconsin's individual winners were all from Marquette. Included were: Robert End, first in original oratory; Thomas Riehle, second in original oratory; Patrick Mayer, sixth in boys' extemporaneous speaking.

Other Wisconsin participants were: Brookfield Central--Paul Schmidt and Timothy Hatch (Dru Munson, coach); Durand--Ruth Brenner (R. M. Duesterbeck, coach); Eau Claire Memorial--Ned Wahl (Art McMillion, coach); Marquette--James Jansen, Mark Miner, David Dreis, Thomas McCarthy, Dean Richards (James Copeland, Ken Thames, Robert Hansen, speech judges, coaches); West Bend West--Lisa Brunette (John Steinbach, coach).



# PART IV: CALENDAR INFORMATION

The calendar of WHSFA events for 1973-74 is printed on the inside front cover of this Newsletter and in the Teachers' Manual. In addition, there is a five-year calendar of WHSFA events in the Teachers' Manual.

The events included below are not sponsored by the WHSFA. They are, however, of interest to member schools, and we are pleased to include them here.

September	
20	Debate and theatre clinic for coaches only; University of Wisconsin - La Crosse, Tom Wirkus, Department of Speech
22	Forensics workshop for teachers; University of Wisconsin - Eau Claire, Grace Walsh, Department of Speech
28	Debate and theatre clinic for students and coaches; University of Wisconsin - La Crosse, Tom Wirkus, Department of Speech
29	Discussion clinic; University of Wisconsin - Eau Claire, Grace Walsh, Department of Speech
October	
6	Debate institute; University of Wisconsin - Stevens Point, Fred Kauffeld, Department of Communication
6	WDCA fall workshop; West Bend East and West High Schools (WDCA)
13	Debate clinic; University of Wisconsin - River Falls, Jerald Carstens, Department of Speech
13	Wisconsin oral interpretation workshop; University of Wisconsin - Eau Claire, William McDonnell, Department of Speech
13	Invitational debate; University of Wisconsin - Oshkosh
13	Invitational debate; Wauwatosa East High School; 3 rds. + champ, all levels, cross-ex, 70 teams (WDCA)
13	Invitational debate; Monona Grove High School; 4 rds. cross-ex, unlimited teams (WDCA)
19--20	Invitational debate; Rhinelander High School; varsity cross-ex, 2-man switch, elims., 60 teams (WDCA)

## October Continued

20	Invitational novice debate; Stevens Point; cross-ex, 60 teams (WDCA)
27	Invitational debate; Oshkosh West High School; A, B, C, cross-ex, 60 teams (WDCA)
November	
3	Invitational debate; Sholes Junior High School; novice and JV, 40 teams (WDCA)
10	Forensic workshop; University of Wisconsin - Oshkosh, Clay Wilmington, Department of Speech
10	Invitational debate; Rhinelander High School; A, B, C, cross-ex, 4-man, 60 teams (WDCA)
10	Invitational debate; West Bend East and West High Schools; cross-ex, all levels, 50 teams (WDCA)
10	Debate; Whitewater Southern Lakes; cross-ex, all levels, awards for 4-2 or better (WDCA)
12--13	International debate; University of Wisconsin - Eau Claire, Grace Walsh, Department of Speech
17	Debate tournament; University of Wisconsin - Stevens Point, Fred Kauffeld, Department of Communication
17	Debate; Wauwatosa East Red Raider; 3 levels, 2-man, sweepstakes, 70 teams (WDCA)
17	Invitational debate; South Milwaukee High School; all levels, cross-ex, 45 teams (WDCA)
17	Invitational debate; Neenah Armstrong High School; cross-ex, unlimited teams (WDCA)
December	
1	Invitational debate; Madison West High School; 2-man varsity and JV switch side, novice cross-ex (WDCA)
1	Invitational debate; Kimberly High School; cross-ex, 39 teams (WDCA)
1	Invitational debate; Merrill High School; 3 levels, cross-ex, 40 teams (WDCA)
1	Invitational debate; Milwaukee South Division High School; novice and JV, cross-ex (WDCA)
7 - 8	Invitational debate; Eau Claire Memorial High School (WDCA)

December Continued  
8

Invitational debate; Appleton West High School;  
3 levels, cross-ex, 60 teams (WDCA)

15 Forensic clinics for students and judges; Lake  
Geneva Badger High School (WFCA)

15 Invitational debate; Sheboygan South High  
School; all levels, cross-ex, 60 teams (WDCA)

15 Invitational debate; Watertown High School;  
3 levels, cross-ex, 75 teams (WDCA)

15 Invitational debate; Oak Creek High School;  
3 levels, unlimited teams, cross-ex, trophy  
for 5-1 or better (WDCA)

January  
5

Invitational debate; Marquette University; all  
levels, cross-ex, varsity switch side, power  
paired (WDCA)

5 Invitational debate; Amery High School; 2 or 3  
levels, 40 teams (WDCA)

11--12 Invitational debate; Monona Grove High School;  
cross-ex, 7 rds., unlimited teams (WDCA)

12 Junior High forensics festival; Milwaukee  
Marquette High School (WFCA)

12 Forensics festival; Muskego High School (WFCA)

12 Debate tournament; University of Wisconsin -  
River Falls, Jerald Carstens, Department of  
Speech

12 Debate tournaments; Milwaukee conference

12 Invitational debate; Wisconsin Rapids Lincoln  
High School; three divisions, cross-ex (WDCA)

18 Invitational debate; Durand High School (WDCA)

19 Forensics festival; West Bend East High School  
(WFCA)

19 Interstate debate tournament; University of  
Wisconsin - Eau Claire, Grace Walsh, Department  
of Speech

19 Invitational debate; Greendale High School; all  
levels, cross-ex, 45 teams (WDCA)

January Continued  
25

Spring speech clinic; University of Wisconsin -  
La Crosse, Tom Wirkus, Department of Speech

26 Forensic tournament; Brookfield Central High  
School (WFCA)

February  
1 - 2

Invitational debate; Carroll College; varsity,  
2-man switch, elims.

2 Forensics tournament; West Bend West High  
School (WFCA)

2 Debate; WDCA Tournament of Champions; JV and  
novice; cross-ex

9 Forensics festival; Lake Geneva Badger (WFCA)

9 Forensics festival; Waterloo High School (WFCA)

16 Forensics tournament; Milwaukee James Madison  
High School (WFCA)

16 Forensics tournament; Whitewater High School  
(WFCA)

16 Forensics tournament; University of Wisconsin -  
Stevens Point, Fred Kauffeld, Department of  
Communication

16 Forensics tournament; Chippewa Falls Senior  
High School

23 Forensic tournament; New London High School  
(WFCA)

23 Forensic tournament; Milwaukee Lincoln High  
School (WFCA)

23 Forensics festival; Waterford High School (WFCA)

March  
1 - 2

Debate; NFL State finals

2 Forensics tournament; Delavan-Darien High  
School (WFCA)

2 Forensics tournament; Monona Grove High School  
(WFCA)

2 Forensics tournament; Ripon College, Frank  
Alusow, Department of Speech

March Continued

- 2 Forensics tournament; University of Wisconsin - River Falls, Jerald Carstens, Department of Speech
- 9 Forensics tournament; Milwaukee Marquette High School (WFCA)
- 9 Forensics tournament; Mukwonago High School (WFCA)
- 23 Coaches tournament; Milwaukee James Madison High School (WFCA)

WHSFA, WIAA, WSMA Combined Calendar for 1973-74.

- October 2 -- WIAA Sub-Sectional Girls Tennis
- October 6 -- WIAA Sectional Girls Tennis and Golf
- October 13 -- WIAA State Girls Tennis and Golf
- October 13 -- WIAA Regional Volleyball
- October 13 -- WSMA Regional Marching Band Contests
- October 16 -- WIAA Regional Cross Country
- October 20 -- WIAA Sectional Volleyball, Cross Country Girls Swimming
- October 27 -- WIAA State Volleyball, Cross Country Girls Swimming, Regional Girls Volleyball
- October 27 -- WHSFA Latest Date for Sub-District Drama Contests
- November 1-2 -- WSMA State Music Convention
- November 3 -- WIAA Sectional Girls Volleyball
- November 10 -- WIAA State Girls Volleyball
- November 10 -- WHSFA District Drama Contests
- November 17 -- WHSFA Sectional Drama Contests
- Nov. 30 - Dec. 1 -- WHSFA State Drama Contests
- January 26 -- WHSFA District Debate Tournaments
- February 7-9 -- WIAA Regional Wrestling
- February 9 -- WHSFA Sectional Debate Tournaments
- February 15-16 -- WIAA Sectional Wrestling
- February 16 -- WIAA Sectional Swimming
- February 16 -- WSMA Honor's Auditions
- February 18 -- WIAA Sectional Skiing
- February 22-23 -- WIAA State Wrestling and Swimming
- February 22-23 -- WHSFA State Debate Tournament
- February 23 -- WIAA Sectional Curling, Regional Girls Gymnastics
- February 23 -- WSMA Honor's Auditions
- February 25 -- WIAA State Skiing
- February 28 - March 1-2 -- WIAA State Hockey
- March 1-2 -- WIAA Regional Basketball, State Curling
- March 2 -- WIAA Sectional Gymnastics (Boys and Girls)
- March 8-9 -- WIAA Sectional Basketball
- March 9 -- WIAA State Gymnastics (Boys and Girls)
- March 16 -- WHSFA Latest Date for Sub-District Speech Contests
- March 14-16 -- WIAA State Basketball
- March 30 -- WHSFA District Speech Contests
- April 13 -- WSMA Last Date for District Solo-Ensembles Festivals
- April 27 -- WHSFA State Speech Contest
- May 4 -- WSMA State Solo-Ensemble Festival
- May 18, 20-25 -- WIAA Sub-Regional Baseball (spring)
- May 21 -- WIAA Latest Date for Sub-Regional Tennis, Latest Date for Regional Golf, Regional Track and Field (Boys and Girls)
- May 24-25 -- WIAA Sectional Track and Field (Boys and Girls)
- May 25 -- WIAA Latest Date for Sect. Golf, Latest Date for Sect. Tennis
- May 27-28 -- WIAA Regional Baseball Playoffs (spring)
- May 30 - June 1 -- WIAA Sectional Baseball (spring)
- May 31 - June 1 -- WIAA State Tennis, State Golf, State Track and Field (Boys and Girls)
- June 6-8 -- WIAA State Baseball (spring)
- July 12-13 -- WIAA Latest Date for Regional Baseball (summer)
- July 19-20 -- WIAA Latest Date for Sectional Baseball (summer)
- July 23-25 -- WIAA State Baseball (summer)

## PART V: PROFESSIONAL INTEREST

Ordinarily, this part of the Newsletter shall be devoted to such items as articles, book reviews, or questions submitted by high school students and teachers. For this particular issue, however, there has not been time to secure such material before the copy deadline. Perhaps the space could best be utilized in discussing some of the recurring problems in the relationship between the individual teacher and the WHSFA. These remarks could be entitled "Improving Communication Within the WHSFA," and they are written by Larry E. Larmer, the Secretary-Treasurer.

During the past year, the State office has received several pieces of mail containing such phrases as "please don't throw this in the circular file," or "I know you won't answer this but . . . ." This is a bit disturbing. Apparently there is some impression that the WHSFA is an insulated, unresponsive agency which is not interested in the feelings or problems among the students or teachers who are directly involved in its activities. If this attitude does exist, one can only wonder how many suggestions or complaints don't get expressed through channels where they can do some good.

Perhaps it would be a good idea to review the policy of the State office toward problems presented by individual teachers and coaches. The State office is, of course, a busy place; nonetheless, it is our intention to respond to every piece of mail to which a response is possible. Although some mail simply asks for information which is contained in a Newsletter or other WHSFA publication, we try to provide an answer. That mail which contains serious complaints or suggestions usually does not stop at the State office but is taken to the Board of Control or Contest Study Committee for consideration.

Certainly, no one can guarantee that all problems or complaints can be resolved to the total satisfaction of the complainant. Nor can all suggestions be implemented. Sometimes that just isn't possible. The point to be stressed, however, is that your complaints are considered.

Another avenue through which an individual teacher or student can express views is the District or Sectional chairman. The willingness of District and Sectional chairmen to serve on the WHSFA Board of Control without pay is indicative of their good will to the Wisconsin high school forensic community. In almost every case, chairmen conduct coaches' meetings in conjunction with District or Sectional contests. Although suggested agendas for such meetings are prepared by the State office, individuals in attendance have the opportunity to raise matters not included among agenda items.

There have also been some recent efforts to increase the input of high school teachers into the Association in a more formal way. At the May, 1973, Board meeting, action was taken to add representatives of the Wisconsin Debate Coaches Association and the Wisconsin Forensic Coaches Association as members of the WHSFA Contest Study Committee. We have also adopted the policy of appointing committees of interested

high school teachers to develop specific proposals for new contests as they are suggested. Finally, to improve the quality of WHSFA contests, it has been recommended that District and Sectional chairmen utilize "referees' committees" of high school teachers to help in settling problems as they arise at contests.

Overall, the seriousness of communication problems is most manifest when, through lack of accurate information, real divisiveness develops between the Association and its participants. The Association will do its part in preventing this occurrence by listening to high school teachers and students. We hope that the teachers and students will do their part by staying informed of developments within the Association by paying particular attention to such publications as the Newsletter and Teachers' Manual.