

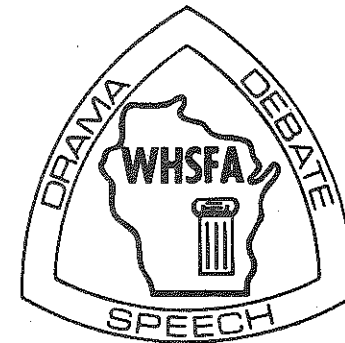
# Wisconsin High School Forensic Association Newsletter

*"Not to defeat each other, but to pace one another on the road to excellence."*

Vol. XLV

Madison, Wisconsin, December 1973

No. 2



WISCONSIN HIGH SCHOOL FORENSIC ASSOCIATION

LOWELL HALL, 610 LANGDON STREET

MADISON, WISCONSIN 53706

affiliated with

UNIVERSITY OF WISCONSIN - EXTENSION

CALENDAR FOR 1973-74

DATES FOR CONTESTS

Drama (1973)	Debate (1974)	Speech (1974)
Sub-District . . . *Oct 27 . . . . .		*Mar 16
District . . . . . Nov 10 . . . . .	Jan 26 . . . . .	Mar 30
Section . . . . . Nov 17 . . . . .	Feb 9 . . . . .	
State . . . . . Nov 30-Dec 1 . . . . .	Feb 22-23 . . . . .	Apr 27
*Latest dates for sub-district contests; all others are firm.		
WIAA State Basketball Finals . . . . .		Mar 16, 1974
Easter . . . . .		Apr 14, 1974
Board of Control Meeting - Madison . . . . .		May 2-3, '74

BOARD OF CONTROL

<b>Northern Section</b> R. M. Duesterbeck Durand High 604 7th Avenue East Durand 54736 (715) 672-8917	<b>Central Section</b> Fern Stefonik Rhineland Sr High Coolidge Avenue Rhineland 54501 (715) 362-6955	<b>Southern Section</b> William Hintz Lake Geneva Badger High South Street Lake Geneva 53147 (414) 248-6243
<b>Eau Claire District</b> Bernard H. Bennett Cornell High 205 South Seventh Cornell 54732 (715) 239-6464	<b>Green Bay District</b> James Trachte East De Pere High 615 South Broadway De Pere 54115 (414) 336-1821	<b>Kenosha District</b> James Highland Union Grove Schools Box 36, Highway 45 Union Grove 53182 (414) 878-2434
<b>River Falls District</b> Merwin Moen St. Croix Falls High St. Croix Falls 54024 (715) 483-3252	<b>La Crosse District</b> Edwin Sievers Viroqua High Blackhawk Drive Viroqua 54665 (608) 637-3191	<b>Milwaukee District</b> Raymond Behnke Cedarburg High 1539 N. Evergreen Drive Cedarburg 53012 (414) 377-6030
<b>Superior District</b> Frank Cirilli Superior Sr High 2600 Catlin Avenue Superior 54880 (715) 394-0269	<b>Oshkosh District</b> Gaylord Unbehaun Brillion Public Schools 315 South Main Brillion 54110 (414) 756-2166	<b>Platteville District</b> Robert Beaver Platteville High 710 East Madison Platteville 53818 (608) 348-2681
	<b>Stevens Point District</b> Edsel Vergin Mosinee Public Schools 700 High Street Mosinee 54455 (715) 693-2530	<b>Whitewater District</b> George Buckingham Whitewater High 401 South Elizabeth Whitewater 53190 (414) 473-2611

Chairman of the Board: Mr. George Buckingham, Whitewater  
 Vice-Chairman of the Board: Mr. Frank Cirilli, Superior  
 Advisor in Speech: Professor Pauline Isaacson, UW - Stevens Point  
 Advisor in Drama: Professor Calvin Quayle, UW - Eau Claire  
 Secretary-Treasurer: Larry E. Larmer, 218 Lowell Hall - 610 Langdon  
 Madison 53706  
 (608) 262-2313

TABLE OF CONTENTS

PART I: THE BOARD OF CONTROL - - - - -	1
October Board Meeting- - - - -	1
WHSFA Policy on Evidence in Debate - - - - -	2
Joint Board Meeting Minutes- - - - -	5
WHSFA Board Elections- - - - -	7
Special Recognition Dinner - - - - -	7
PART II: THE STATE OFFICE - - - - -	13
New Office Secretary- - - - -	13
Judging and Coaching Workshops - - - - -	13
Debate Questionnaire- - - - -	13
PART III: SCHOOLS AND STUDENTS - - - - -	14
The State Drama Contest - - - - -	14
Sectional Drama Contests- - - - -	32
District Drama Contests - - - - -	32
Summary 1973-74 Drama Participation - - - - -	34
PART IV: CALENDAR INFORMATION - - - - -	37
PART V: PROFESSIONAL INTEREST - - - - -	38
Judges and Judging- - - - -	38

PART I: THE BOARD OF CONTROL

October Board Meeting

The regular meeting of the WHSFA Board of Control was held on October 19, 1973, at the Holiday Inn in Stevens Point. Abstracted from the minutes of that meeting are the following items:

- Welcomed: *New Board members: Robert Beaver (Platteville District); Bernard Bennett (Eau Claire District); R. M. Duesterbeck (Northern Section); James Highland (Kenosha District); Edsel Vergin (Stevens Point District).*
- Elected: *Board Chairman: George Buckingham (Whitewater District)  
Board Vice-Chairman: Frank Cirilli (Superior District)*
- Accepted: *Auditors' report of State office for 1972-73 year (p. 7, September, 1973, Newsletter).*
- Accepted: *Membership report; current membership is 462 schools, three fewer than 1972-73.*
- Accepted: *Contest Study Committee report, including:*
- 1. Designation of a committee of high school teachers to suggest Public Address topics for next year.*
  - 2. Designation of a committee of high school teachers to prepare a proposal for storytelling as a new WHSFA spring speech contest.*
  - 3. Announcement that next Contest Study Committee meeting will be held in conjunction with State Speech Contest, April 27, 1974.*
  - 4. Designation of sub-committee (Calvin Quayle, Jim Copeland, Fern Stefonik) to study improvement of speech ballots.*
  - 5. Recommendation of a WHSFA policy statement on use of evidence in debate. (Complete text of statement is on pp. 2-4 of this Newsletter.)*
  - 6. Clarification of use of hired assistants in light of WHSFA General Rule 3 which provides, "Drama, debate, and speech coaches must be licensed teachers of the school." It was the consensus of the Board that, if the registered coaches are licensed teachers, a school may hire other assistants if it wishes.*
  - 7. Recommendation that the secretary-treasurer bring to the next Board meeting a proposal to formalize the Contest Study Committee in the Association's Constitution on General Rules.*
- Designated: *Mr. R. M. Duesterbeck to be the WHSFA official delegate to the NWEA Committee on Discussion and Debate meeting which will be held in New Orleans in December.*

Passed: *A motion that the secretary-treasurer be authorized to use WHSFA funds to develop programs of benefit to the Association and its relationship with University of Wisconsin-Extension.*

Rejected: *A request from the member schools of the Capitol Conference to have Wisconsin Heights High School transferred from the Platteville District to the Whitewater District.*

WHSFA POLICY STATEMENT ON USE OF EVIDENCE IN DEBATE  
(Adopted October 19, 1973)

The Wisconsin High School Forensic Association believes that the viability of a democratic debate process depends on the honest and accurate use of information. This is just as true in competitive, interscholastic debating as it is in "real world" decision-making. Accordingly, the Association deplores the deliberate misrepresentation or fabrication of evidence in interscholastic debate. Further, we insist that debaters and coaches take every precaution to eliminate even honest errors in the utilization of information in a debate.

The Association is confident that most participants in the WHSFA debate contest series will realize that the matter of evidence usage is an ethical concern of the highest order and that the debater who achieves any measure of success as a consequence of misusing evidence has achieved nothing.

Unfortunately, it appears that evidence has been misused. This is especially regrettable in that the problems of enforcing evidence problems are severe. How can we determine, in fact, that a violation has occurred? How serious is the violation--a deliberate fabrication or an inadvertent misrepresentation? What penalty, if any, is appropriate?

It is difficult to write rules which cover all the contingencies involved in arriving at answers to the above questions. Rather, it seems most efficient to regard the examination of alleged violations and the imposition of appropriate penalties as a function of the debate judge when such circumstances arise.

In debates involving evidence violations, we urge judges to observe the following guidelines:

1. Do not allow an apparent violation to enter into the decision unless the evidence is challenged by the opposing team. If evidence is used in a debate which you, yourself, believe is inaccurate or misrepresented, take pains to point this out on the ballot or in private conversation with the coach. Keep in mind, however, that your own recollections of what you think the evidence really says may be inaccurate. Thus, to protect debaters from your misperceptions and misrecollections, you need not go through the distasteful process of actually authenticating evidence which is presumably acceptable to the opposing team.

2. Do not stop a debate in order to investigate an alleged evidence violation. If it is necessary to pursue the allegation, wait until after the debate when all other arguments have been presented.
3. Do not pursue the investigation during the course of a tournament if it is unnecessary to do so. That is, the alleged offending team may have lost the debate on other grounds. Thus, the decision need not be delayed nor the unhappy disturbance created at that particular time. Again, you ought to express on the ballot or in a private conversation with the coach that the team was unable to demonstrate the veracity of the evidence in question, during the course of the debate, and that such a situation could have been important.
4. Be sure that the nature of the violation is clearly specified by the opposing team within the context of the debate. What is there about the evidence which makes it suspect? Is it out of context? Has the date been misrepresented? Is there reason to believe the source would not have made the statement? Has the wording been changed to affect the meaning? Does the accusing team have positive verification of the alleged violation? Vague accusations do not warrant your investigation.
5. In those difficult cases when the decision in a debate depends on the authenticity of a challenged piece of evidence and the accusation seems credible in spite of the absence of positive proof of a violation, the following steps are recommended:
  - a. Ask the accused debaters to provide positive verification of the quoted material. If they have the original source or a xeroxed copy which was faithfully represented in the debate, the matter would be closed.
  - b. If step "a" fails, quietly and without calling attention to the situation, ask the tournament director to put you in contact with the coach of the accused team. Hopefully, the coach will be able to provide information to authenticate the evidence in question.
  - c. If all else fails, ask the tournament director to convene a Referees Committee of impartial coaches to consider the situation. Remember, however, that presumption of innocence should prevail. If the Referees Committee cannot determine that the violation did occur, it is best to presume that it did not. Presumption of innocence seems justifiable. Although a debate team may "get away" with misusing evidence in this one case, the debate process itself will eventually catch up with them.

As we have said before, matters relating to the misuse of evidence or allegations of such misuse are extremely distasteful. Participants in WHSFA debate contests, whether coaches or students, can help avoid much unpleasantness if they will heed the following observations and guidelines:

1. Remember that each debater is responsible for all evidence he uses in the debate. This applies whether or not the user of the evidence has researched it himself or not. If caught using misrepresented or fabricated evidence, it is no excuse to say, "I borrowed it from another member of the squad."
2. Once you get into the debate year, you will know the issues well enough to know which of your evidence is most significant or unusual and therefore most likely to be challenged. If at all possible, make extra efforts to have with you positive authentication of this kind of evidence (the actual publication it comes from or a photocopy). At the very least, have complete bibliographical information available for all your evidence so that authentication is possible.
3. If it is a serious matter to misrepresent or fabricate evidence, it is equally serious to accuse an opponent of such a practice. Do not make such an allegation unless you are sure and, if at all possible, be able to prove the violation in question.
4. If you feel it is necessary to question an opponent's use of evidence, do so during one of the speeches for your side, be specific about what is wrong with the evidence, point out how the apparent violation is significant to the progress of issues within the debate, and assume that the misuse of evidence is a consequence of an honest misunderstanding, misinterpretation, or misinformation on the part of the other team. In other words, be mature and tasteful when making a challenge.
5. There is some disagreement among Wisconsin debate coaches regarding whether or not one debate team must show its evidence to the opposing team if asked to do so. For the time being, we are going to leave this up to the discretion of debaters and coaches. If a team refuses to display its evidence to an opponent, if the challenge has been specifically and clearly made, and if the judge sees the evidence as being crucial to the outcome of the debate, he will, in all probability, request to see the evidence in question. We recommend, however, that debaters make evidence available to opponents during the course of a debate if requested to do so. This simply prevents what in most cases is needless antagonism.
6. In the course of this statement, we have acknowledged that those accused of evidence violations should enjoy the presumption of innocence and that evidence violations are difficult to establish. If you see this as a greater opportunity to misuse evidence without penalty, we simply ask you to realize that you have already decided to violate ethical expectations.

The Wisconsin High School Forensic Association assumes that all participants are honest, reliable, and diligent researchers and would not, knowingly or otherwise, misrepresent evidence in a debate. However, in clear cases of flagrant and/or repeated violations, we reserve the right to suspend member schools from competition at the district, sectional, or state level.

## Joint Board Meeting

MINUTES  
(October 20, 1973)

A joint meeting of the Boards of Control of the Wisconsin Inter-scholastic Athletic Association (WIAA), Wisconsin High School Forensic Association (WHSFA), and Wisconsin School Music Association (WSMA) was held on Saturday, October 20, at 10:00 a.m. at the Holiday Inn in Stevens Point.

Presiding over the meeting was Michael George of the Department of Public Instruction. At the speakers' table were the executive heads of the three organizations: Mr. John Roberts of the WIAA, Mr. Larry Larmer of the WHSFA, and Mr. Dick Gaarder of the WSMA. Associate Director of the WIAA, Matt Otte, recorded the minutes.

After the three executive heads introduced the new members of their Boards of Control, Gordon Jensen, consultant in physical education in the Department of Public Instruction, gave the keynote address.

Mr. Jensen, in his introductory remarks, indicated the DPI constitutionally is responsible for education in Wisconsin and that, in contrast with the three organizations represented, it is "more leadership-minded than regulation-minded." He added the DPI is pleased with voluntary associations, such as the WIAA, WHSFA, and WSMA, and the contribution they make in education. He noted that in the DPI the word "extracurricular" is not used because "if there is anything educational, it is in our associations."

Mr. Jensen indicated our challenge is to upgrade the culture of the community and that athletics, forensics, and music give something of great dimensions to the community. He stressed the importance of accountability and the continuing importance of athletics, forensics, and music being strong in education and, therefore, vital in the community.

Pointing out that the DPI wants to continue being non-regulatory, but closely related in liaison, with the three organizations, Mr. Jensen outlined some "opinions, problems, and suggestions" which have been observed and formulated by the DPI. As opinions, Mr. Jensen mentioned (a) that as long as the programs are for the "benefit" of the kids, we can't go wrong. (b) The three organizations "ought to complement, not dominate, the academic education program." (c) "Programs must be inclusive, not exclusive."

As problems, Mr. Jensen mentioned (a) the growing tendency of students, parents, and the general public to "challenge decision-making" and (b) the differences in rules between athletics on one side and forensics and music on the other, particularly as related to conduct, but also in other areas, such as specialized camps and similar programs.

As suggestions, Mr. Jensen cited the budget problems faced by most school districts before saying that (a) the three groups should "make their activities visible" as a part of education through the

news media, (b) the associations should reach the "masses" in the schools, citing an example of the Four Lakes athletic program in the Madison area in which "every boy who wants to play football gets a uniform, a coach, and a schedule," and (c) as much home rule as possible should prevail in place of state-wide regulations which, particularly in athletics, doesn't take into consideration that some young people can be "academically inept" but still potentially a "success" through athletics, forensics, and/or music.

Mr. Jensen concluded his remarks by saying the three associations are in good hands and their efforts are appreciated. He indicated the DPI's willingness to be of additional help whenever and wherever needed.

Mr. Larmer spoke briefly on the efforts for a joint calendar. The venture got under way for the current year with a reasonable amount of success. There was some concern about the distribution procedures, but these can be ironed out, it was reported. Some problems as they exist in conflicts of dates cannot be erased, but will be kept at a minimum. There was an indication an effort should be made to include some of the testing dates on the calendar.

There also was discussion in the area of the WIAA incorporating, either on its wall calendar or pocket calendar, the forensics and music dates. Discussion in this area was climaxed with a motion by Edsel Vergin (Mosinee), supported by John Boie (Brookfield Central), requesting the three executive heads to resolve the calendar situation. The motion carried without dissenting vote.

Mr. Roberts reported briefly on the idea of a unified activities committee which would convene regularly and probably replace the joint meetings of Boards of Control which have been held for the last two years. The idea is similar to a plan which has worked for several years in Iowa and it concerns itself primarily with calendar problems, along with other joint concerns. There was general enthusiasm for the idea, and on motion by Mr. Vergin, supported by Mr. Boie, such a committee was formally suggested to meet whenever necessary. Also, on motion by James Highland (Union Grove), supported by Robert Feske (Wisconsin Dells), it was decided the three executive heads, along with the Board of Control chairman or his designated representative, would make up the unified activities committee. Both motions carried without dissenting vote.

The three executive heads spoke briefly for their respective organizations in three areas: membership dues, participation statistics, and services rendered to their membership.

It was suggested, without formal action being taken, that the Wisconsin Association of School Boards, the Wisconsin Association of School District Administrators, and the Wisconsin Secondary School Administrators Association be informed of the action of this meeting. It also was mentioned that perhaps the WASB should print the minutes of the meeting in its publication along with information related to dues, participation, and services.

#### 1974 Elections

In the spring of 1974, the State office will conduct elections for the chairmanship of the Southern Section, the Eau Claire District, the La Crosse District, the Milwaukee District, and the River Falls District.

Mr. William Hintz of the Southern Section, Mr. Bernard Bennett of the Eau Claire District, Mr. Edwin Sievers of the La Crosse District, and Mr. Raymond Behnke of the Milwaukee District have advised the State office that they will be candidates for re-election.

Mr. Merwin Moen of the River Falls District will not be a candidate for re-election.

#### Special Recognition Dinner

On the evening of October 19, 1973, a special recognition dinner was held at the Holiday Inn in Stevens Point to honor five recent retirees from the WHSFA Board of Control.

Those honored were J. C. Gillmann, former Stevens Point District Chairman and Chairman of the WHSFA Board of Control; Norman Panzenhagen, former Eau Claire District Chairman and Vice-Chairman of the WHSFA Board of Control; Marylou Patterson, former Chairman of the Northern Section; Paul Ussel, former Chairman of the Kenosha District; and Ervin Marquardt, former Chairman of the Northern Section. (Mr. Marquardt left the Board in 1969; the others retired in 1973.)

Emeritus Professor Herman Brockhaus, Secretary-Treasurer of the WHSFA 1965-1972, served as Master of Ceremonies.

Mr. Frank Cirilli, Chairman of the Superior District, was in charge of arrangements.

Primarily through pictorial representation, the next few pages report the events of the recognition dinner.



"THE BIG THREE"

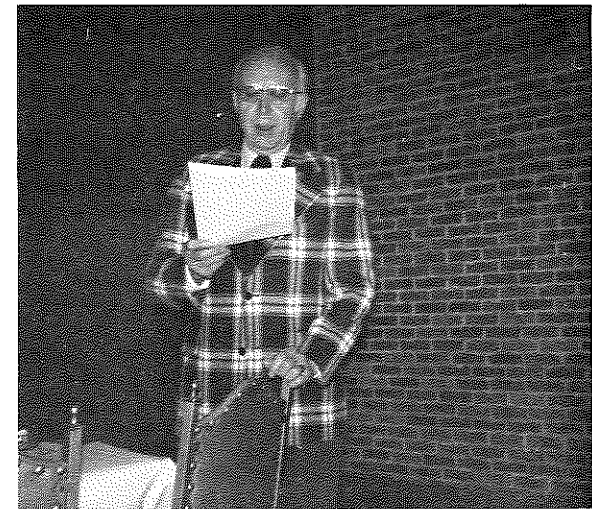
Pictured above are Charlie Gillmann, Norm Panzenhagen, and Marylou Patterson, all of whom retired from the WHSFA Board of Control in 1973. Together they represent 32 years of service to the Association.



Ervin Marquardt (left) and Charlie Gillmann reminisce at the recognition dinner. In the background left is Ed Sievers and in the background right are Mr. and Mrs. Paul Usel.



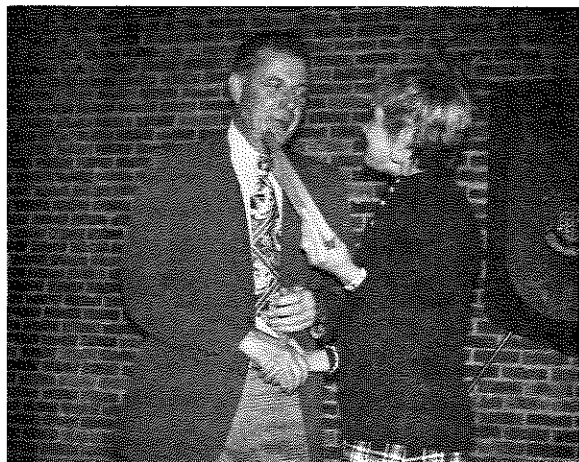
Bernard Bennett, new Chairman of the Eau Claire District, shares after-dinner conversation with Mr. and Mrs. George Buckingham. In the background are Mr. and Mrs. Herman Brockhaus.



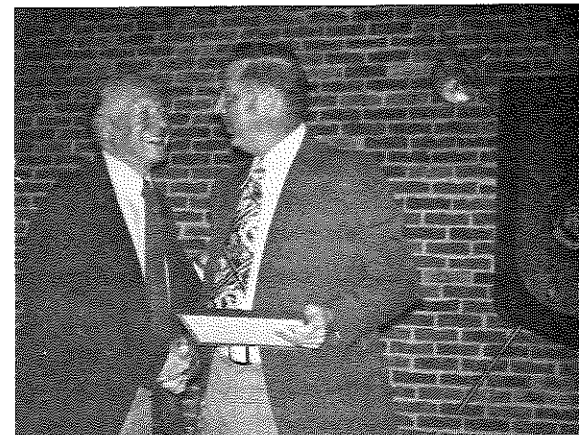
Herman Brockhaus served as Master of Ceremonies for the awards presentations at the recognition dinner.



Paul Ussel (right), retiring Chairman of the Kenosha District, receives his Certificate of Recognition from newly-elected Board Chairman, George Buckingham. Paul was characterized by Master of Ceremonies Herman Brockhaus as "The man who was there at the right time" in recognition of his chores as the first duly-elected, full-term Chairman of the new Kenosha District in 1970. In the foreground is Ed Sievers--apparently White Owl got him.



Marylou Patterson, retiring Chairman of the Northern Section, receives her Certificate of Meritorious Service from Mr. Buckingham. Marylou was identified by Mr. Brockhaus as "The Woman who was everywhere all the time." Brock explained that Marylou not only provided unselfish service to the WHSFA but that her other professional contributions were extensive. Marylou was a member of the Board of Control for nine years.

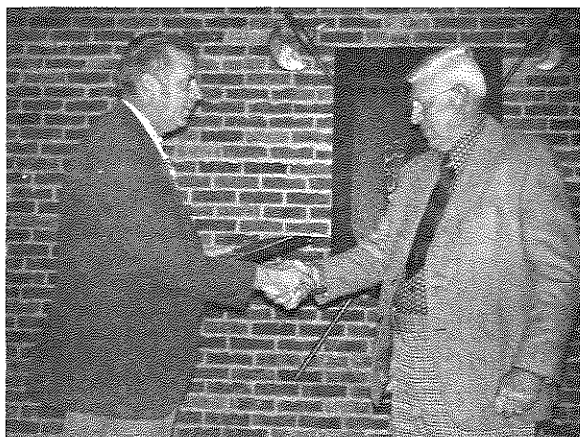


Ervin Marquardt is presented his Certificate of Meritorious Service by George Buckingham. Ery served the Board as Chairman of the Central Section from 1951 to 1969. Mr. Brockhaus described Ery as "The man with a record of service and achievement." It was pointed out that Ery's six full terms on the Board constitutes a longer record of service than that of anyone else. When Ery stepped down in 1969, the Board had not yet established its recognition awards.



Norman Panzenhagen, former Chairman of the Eau Claire District, is also presented with a Certificate of Meritorious Service. In Mr. Brockhaus' remarks, Norm was regarded as "The man of law and order." Of particular note were Norm's efforts in getting the Eau Claire District re-organized and solvent and his numerous suggestions for constructive change on the Board of Control.





J. C. Gillmann (right) receives a special plaque in recognition of his seventeen years of work on the WHSFA Board of Control. Master of Ceremonies Herman Brockhaus spoke of Mr. Gillmann as "The man who gave the WHSFA a future." Charley served as Board Chairman for ten years--longer than any other chairman. Among the number of changes enacted during Charley's tenure were the expansion of the number of districts from nine to eleven; the restoration of district boundaries; establishing a dues structure which made the State office solvent; and several changes in contest rules.



Charley Gillmann (left) looks with approval at his successor as WHSFA Board Chairman, George Buckingham (right), while Bill Hintz looks on. On the other hand, maybe Charley is wondering what George has to smile about.

New State Office Secretary

The pleasant and helpful voice you hear when you call the WHSFA State office belongs to Mrs. Shirley Harless. Mrs. Harless replaced Lois Sheehan who retired on June 30, 1973. She has been with the University for seven years, formerly with the Department of Psychology. Learning the ropes of the Association is a complex task to which Mrs. Harless has responded with efficiency, enthusiasm, and dedication. Most important of all her attributes is her genuine interest in the work of the Association.

WHSFA Coaching and Judging Workshops for Spring Speech

Four WHSFA districts are cooperating with the State office and University of Wisconsin-Extension in conducting workshops for coaches and judges of spring speech events during January and February, 1974. Information will be sent to coaches in member schools in the appropriate districts.

The following workshops have been scheduled:

- Superior District: Ashland High School, Saturday, January 12
- Whitewater District: Wisconsin Center (University of Wisconsin campus), Thursday, January 17 (6:30-9:00 p.m.)
- Green Bay District: East De Pere High School, Saturday, January 19
- Kenosha District: University of Wisconsin-Parkside (Racine), February 1 (3:45-8:30 p.m.)

Debate Questionnaire

The WHSFA State office conducted a questionnaire survey of member schools on various matters related to the WHSFA debate series. The responses were not due back in the State office until December 1. Thus, results cannot be compiled in time for inclusion in this Newsletter. However, the results will be distributed to district and sectional chairmen and may serve as the basis for discussion at coaches' meetings held during district and sectional debate tournaments.

PART III: SCHOOLS AND STUDENTS

The Drama Contest Series

The State Contest

The State Drama Contest was held at the University of Wisconsin-Stevens Point on November 30-December 1, 1973. The next few pages report the awards earned by the 339 students from the twenty-six schools participating.

ALGOMA - A

"King of the Castle"  
Nevil Malin

Director: David W. Loos  
Student Director: Ruth Provoznik

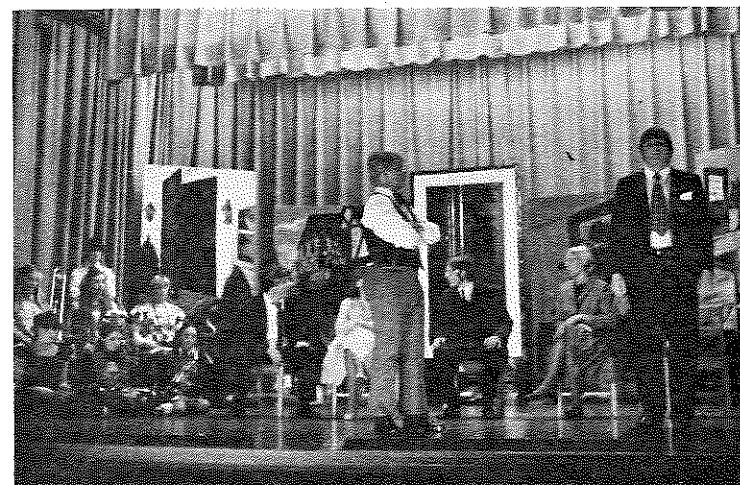
Man	- - - - -	-Bill Leahy
Masked Player	- - - - -	Steve Entringer
Mother	- - - - -	Kim Krautkramer
Schoolmaster	- - - - -	John Curtin
Business Colleague	- - - - -	Dale Eggert
Wife	- - - - -	Kim Palazzo
Friend	- - - - -	-Pat Phillips
Orchestra	- - - - -	-Nancy Vandervest, Kathy Berg, Karen Naze, Sue Gorz, Ed Rutledge, Carol Krautkramer, Anne Maedke
Stage Manager	- - - - -	Paul Maedke
Crew	- - - - -	-Mike Knipfer, John Gorz, Mike Zastrow, Mike Schwedler, Paul Rodrian, Lee Koehler, Al Vandermeuse, Tom Bero, Dennis Schinderle, Dan Zeman, Sue Seidl
Make-up Staff	- - - - -	Heidi Harmann (Chm), Kelli Dettman, Tery Meyer, Susie Vlies, Lisa Naze, Jane Groessl, Pat Feuerstein, Brenda Barnes, Amy Groessl, Lu Ann Harmann, Mary Steeber, Melanie Martin, Linda Gabriel
Set Design	- - - - -	-Jane Haegele, Sue McKenna, Jean Weber, Cindy Schmitt
Prompters	- - - - -	Cindy Schmitt, Jean Weber

BERLIN - A

"This Property is Condemned"  
Tennessee Williams

Locale: Railroad Tracks Outside a Small Southern Town  
Time: Late 1930's  
Director: James Rericha

Willie	- - - - -	-Sue Clasen
Tom	- - - - -	Steve Hogan
Make up	- - - - -	- Amy Hobbs
Lighting and Props	- - - - -	-Jim Goodrich
Stage Manager	- - - - -	-Mr. James Feavel



Algoma's production of "King of the Castle," directed by David Loos, was awarded an "A" at the 1973 State Drama Contest. In the foreground are "Man," played by Bill Leahy, and "The Schoolmaster," played by John Curtin. At the rear left is the orchestra. Seated in the background are "Friend," played by Pat Phillips, "Wife," Kim Palazzo, "Business Colleague," Dale Eggert, and "Mother," Kim Krautkramer.

EAU CLAIRE REGIS - A

"Botticelli"  
Terrence McNally

Locale: Any Battlefield  
Time: Any Time  
Director: Mr. Malcolm Mosing

Wayne - - - - - Dave Schrader  
Stu - - - - - -Mark Howie  
Man - - - - - -Paul Braun

EVANSVILLE - A

"The Loveliest Afternoon of the Year"  
John Guare

Locale: There  
Time: Then  
Director: J. Peter Shaw

She - - - - - Patti Krueger  
He - - - - - -David Devlin

Crew - - - - - Jim Miller, Lori Elmer, Susan Lien,  
Linda Milbrant, John Jordan

GREENFIELD - A

"X-Communications"  
Theatre X

Locale: Anywhere  
Time: Any Time  
Director: Carol Konet

Cast and Crew

Nancy Baldewicz - - - - - Bobbi Miller  
Liz Budny - - - - - -Bonnie Pacala  
Sue Jansen - - - - - -Debbie Paprocki  
Jane Krivitz - - - - - -Chris Pietruszewski  
Karen Kukla - - - - - -Donna Smagalski

LA CROSSE AQUINAS - A

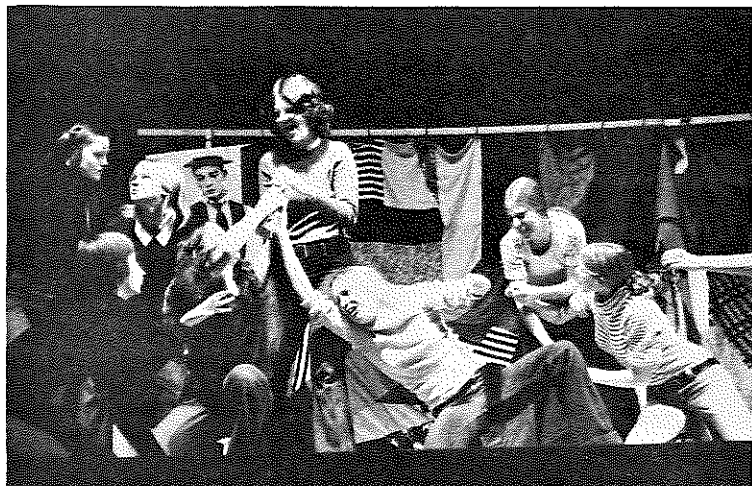
"Anastasia"  
Marcelle Maurette

Locale: Berlin  
Time: Following World War I  
Director: Michael J. Sipe .

Anna - - - - - Jeanne Williams  
Dowager Empress - - - - - -Tracy Thompson  
Narrator - - - - - -Terri Skover



Above are the two actors in Evansville's production of "The Loveliest Afternoon of the Year," directed by J. Peter Shaw. "She" is played by Patti Krueger and "He" is played by David Devlin. The play received an "A" rating at the state contest.



Above is a scene from Greenfield's production of "X-Communications" directed by Ms. Carol Konet. The play received an "A" award at the state contest.



The scene above is from La Crosse Central's production of "The Effect of Gamma Rays on Man-in-the-Moon Marigolds," directed by Mrs. Earleen Wardwell. On the floor above is Sarah Hayden playing "Ruth." At left is Kay Shannon playing "Beatrice" and right is Rebecca Crum as Tillie.

LA CROSSE CENTRAL - A

"The Effect of Gamma Rays on Man-in-the-Moon Marigolds"  
Paul Zindel

Locale: The City  
Time: The Present  
Director: Mrs. Earleen Wardwell  
Student Director: Danna Doyle

Tillie- - - - -Rebecca Crum  
Ruth- - - - -Sarah Hayden  
Beatrice- - - - - Kay Shannon  
Janice- - - - -Karen Sorenson  
Stage Assistants- - - - - Shellie Backlund, Jim Grosskopf  
Lighting- - - - -Rick Davis

MOSINEE - A

"The Hasty Heart"  
John Patrick

Locale: Convalescent Ward, British General Hospital, Southeast Asia  
Time: World War II  
Director: Robert Hansen

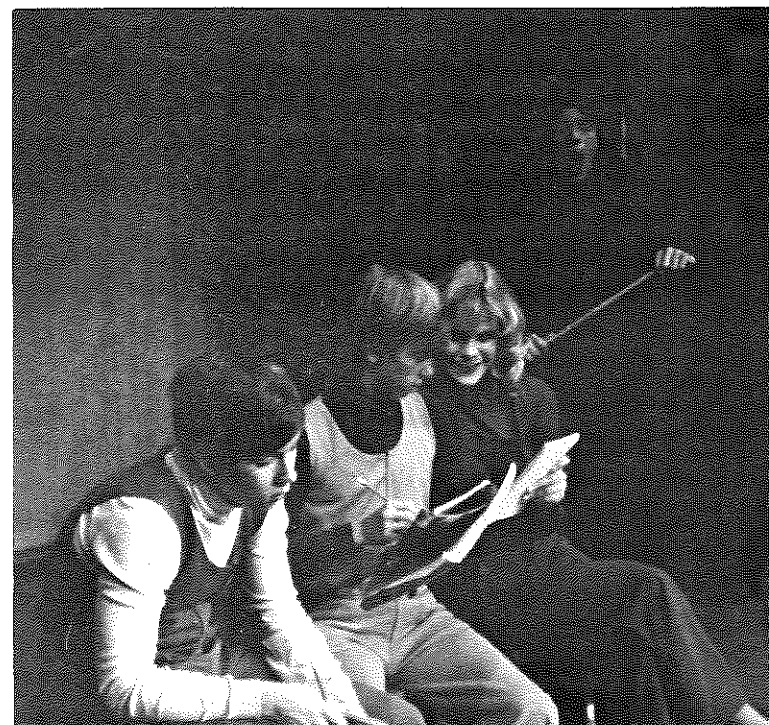
Colonel - - - - - Don Boehm  
Lachlen - - - - - Richard Ruzga  
Sister Margaret - - - - -Rita Baravetto  
Yank- - - - - Todd Whitmore  
Tommy - - - - -Jim Fredrick  
Digger- - - - - Ron Pecha  
Kiwi- - - - - Bill Line

NEW BERLIN - A

"Adaptation"  
Elaine May

Locale: Here  
Time: Now  
Director: Mrs. Stacey Fiantt  
Student Director: Karen Aschenbach

Gamesmaster - - - - -Matt Kulzick  
Male Player - - - - -Jeff Gepfert  
Female Player - - - - -Lyn Pare  
Contestant- - - - - Gary Nawrocki  
Stage Manager - - - - - Kathi Wrensch  
Costumes- - - - - Karen Soderland  
Lights- - - - -Diane DeDecker, Kurt Majkowski  
Make up - - - - -Sandy Steele, Elaine Tyndall  
Props - - - - - Lynette Lavota, Rose Polzin  
Sound - - - - - Mike Weix  
Stage Crew- - - - - MaryBeth Kubisiak, Sue Pirt, Pam St. John



New Berlin's production of "Adaptation" received an "A" award at the State Drama Contest. The play was directed by Mrs. Stacey Fiantt. Pictured above (left to right) are Matt Kulzick, Gary Nawrocki, Lyn Pare, and Jeff Gepfert.

NEW BERLIN EISENHOWER - A

"Royal Gambit"  
Hermann Gressieker

Locale: England  
Time: Sixteenth Century to Present  
Director: Mrs. Mary Pat Sutherland

King Henry VIII - - - - - Mark Pedriani  
Katarina of Aragon - - - - - Sandy Ames  
Anne Boleyn - - - - - Sue Wilkins  
Jane Seymour - - - - - Linda Schulz  
Anna of Cleves - - - - - Debbie Sparkowski  
Kathryn Howard - - - - - Sue Katerinos  
Kate Parr - - - - - Karen Brown  
  
Stage Manager - - - - - Laurie Horn  
Lights - - - - - Jerome Llerandi  
Sound - - - - - Jim Bucholtz  
Costumes - - - - - Heidi Hoffmann  
Crew - - - - - Tim Michelic, Al Sajdak, Kathy Love, Colleen Way

PORT WASHINGTON - A

"Santa Claus"  
E. E. Cummings

Director: Ralph C. Lohse

Santa Claus - - - - - John Wallace  
Death - - - - - Wes Decker  
Child - - - - - Kimberly Kunz  
Woman - - - - - Ruth Markowski  
Mob/Chorus - - - Joy Kritchman, Debbie Windis, Kay Karrels, Amy Bley  
  
Crew - - - - - Mark Wulff, Kathy Schwanz, Janet Gunderman

PULASKI - A  
"Barrel of Monkeys"  
R. H. Bibolet

Locale: Any Stage in the USA  
Time: Present  
Director: Mrs. Julie Robinson  
Student Director: Theresa Manning

Mama Bear - - - - - Ann Olejniczak  
Baby Bear - - - - - Dale Zillmer  
Papa Bear - - - - - John Ryan  
Goldilocks - - - - - Shelley Peterman  
The Director - - - - - Sandy Beirowski  
  
Stage Crew - - - - - Kathy Beirowski, Dawn Beirowski, Donna Beckwith,  
Shirley Brusky, Judy Manning  
Make-up Crew - - - - - Sue Matczak, Bonnie Nienhaus, Theresa Manning

SCHOFIELD D. C. EVEREST - A

"His Wife the Midnight Trumpet Player"  
Charles G. Taylor

Locale: An Urban Apartment  
Time: The Present  
Directors: Mary Miller and Chuck Brown

He - - - - - Mark Roselius  
She - - - - - Judy Heneghan  
Neighbor - - - - - Gary Zoromski  
Landlord - - - - - George Brzezinski  
Other Neighbors - - - - - Jim Zollpriester, Roz Rouse  
  
Lighting - - - - - Dale Ott, Kathy Thompson, Laurie Juedes  
Make up - - - - - Shari Bulmer, Amy Zvoda, Cindy White,  
Cheryl Andreske, Becky Ulrey, Jerri Rohloff  
Prop Managers - - - - - Chuck Franklin, Cheryl Dalnodar

WHITEFISH BAY - A

"Sukeroku"  
(An Original Kabuki Play in Aragoto Style)  
Translated by Faubion Bowers

Locale: Outside a Residence of Courtesans in Naka-No-Cho  
Time: Early Eighteenth Century  
Director: Mercedes M. Chalmers  
Student Director: Jill Old

Narrator - - - - - Bill Reitman  
Sukeroku - - - - - John Stern  
Agemaki, a Courtesan, Sukeroku's Lover - - - - - Malorie Gottlieb  
Otatsu, Agemaki's Attendant - - - - - Jill Old  
Yaeginu, a Courtesan - - - - - Cathy Kochifos  
Aizome, a Courtesan - - - - - Lorelei Ybanez  
Ukinhashi, a Courtesan - - - - - Anne Kemmet  
Kocho, a Courtesan - - - - - Randy Dolnick  
Shiratama, a Courtesan - - - - - Carolyn Harris  
Manko, Sukeroku's Mother - - - - - Julie Voltz  
Shinbei, Sukeroku's Brother - - - - - Mitch Lewis  
Ikyu, Agemaki's Patron - - - - - Mike Mishlove  
Kanpera, Ikyu's Follower - - - - - John Willman  
Senbei, Ikyu's Follower - - - - - Ted Boerner  
Fukuyma, Noodle Seller - - - - - David Crawford  
Small Girls - - - - - Beth Hern, Amy Sheyer

Property Men - - - - - Don Levings, Bill Reitman  
Musicians - - - - - Kyogenkota - - - - - David Glenn  
Samisen - - - - - Renee Zwald  
Flute - - - - - Mary Cummins  
Drums - - - - - Bradd Jamron

(Continued)

(Whitefish Bay Continued)

Audience and Vendors - - - Joan Baird, Susan Bell, Lisa Blackburn,  
Susan Davies, Nann Madden, Nancy Maniaci,  
Jean Ring, Kriss Snider

Production Design - - - - - Jim Donnelly  
Stage Manager - - - - - David Glenn  
Lighting Crew Chief - - - - - John Wilson  
Costume Crew Chief - - - - - Judy Neal  
Make-up Crew Chief - - - - - Nann Madden  
Crews - - - - - Lori Adashek, Sari Berlin, Patti Berlin,  
Sue Bresee, Karen Burns, Eileen Corcoran,  
Lynne Delimat, Terry Dunn, Karann Hanson,  
Teri Hentzen, Martha Kelley, Mike Kelley,  
Karen Kruger, Peggy Loing, Steve Peck,  
John Riebeau, Judy Ryerson, Julie Sadowsky,  
Amy Schimek, Mike Salomon, Francee Silver,  
Greg Wilson, John Winograd, Jane Zacharias,  
Dave Stoeffel

BROOKFIELD EAST - B

"Death of the Hired Man"  
Jay Reid Gould-Robert Frost

Locale: New England Farmhouse  
Time: 1930's

Director: James Anello  
Assistant Director: Karen Lochowitz

Warren - - - - - Bob Rynkiewicz  
Mary - - - - - MaryDan Kegel  
Edna - - - - - Sarah Marotz  
Silas - - - - - Jim Gommermann

Assistant Director - - - - - Karen Lochowitz  
Prop Mistress - - - - - Kathy Kucera

CAMBRIA-FRIESLAND - B

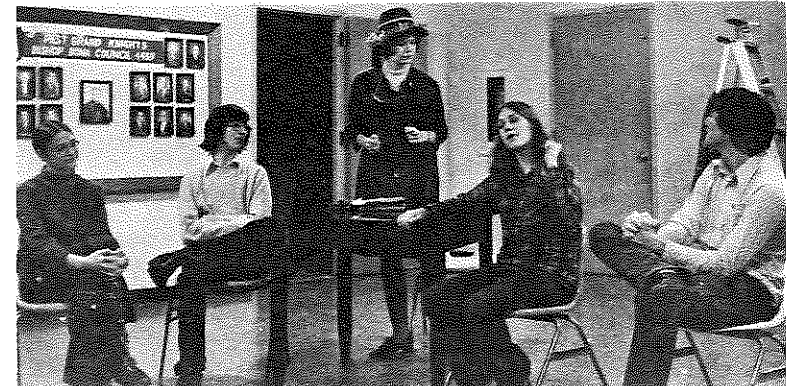
"What Did You Say 'What' For?"  
James Paul Dey

Locale: Bright Summer Day in a Park  
Time: Present

Director: Mr. Mark J. Wanless

Female - - - - - Debbie Williams  
Male - - - - - Jay Emanuel  
Voice - - - - - Cheryl Cupery

Crew - - - - - Debbie Williams, Jay Emanuel, Cheryl Cupery



Mrs. Julie Robinson, director of Pulaski's "A" award winning production of "Barrel of Monkeys," responded to the invitation extended to all "A" winners to submit a photograph for inclusion in the Newsletter. Pictured above (left to right) are Shelley Peterman, Dale Zillmer, Sandy Beirowski, Ann Olejniczak, and John Ryan.





(Green Bay Preble Continued)

Stage Design- - - - - Kathy Presnell  
Lights- - - - - Karyl Anderson, Dick Kusch, Steve Neto  
Make up - - - - - Laurie Lueck, Julie Humk  
Costumes- - - - - Debbie Bellmo

LA FARGE - B

"This Property is Condemned"  
Tennessee Williams

Locale: Railroad Embankment Outside Small Mississippi Town  
Time: Late 1930's  
Director: Mary Dolny  
Student Director: Lisa Gudgeon

Willie- - - - - Lynne Vosen  
Tom - - - - - Wayne Marshall

LUXEMBURG-CASCO - B

"Merton of the Movies"  
G. Kaufman and M. Connelly

Locale: Simsbury, Illinois and Hollywood, California  
Time: The Early Twenties  
Director: Lynda Miller  
Student Director: Jo Brust

Merton Gill- - - - - Joe Thibaudeau  
Amos Gashwiler - - - - - Steve DeBaker  
Tessie Kearns- - - - - Cathy Derenne  
Casting Director - - - - - Shari Servais  
Lester Montague- - - - - John Ries  
Sigmond Rosenblatt - - - - - Mike Gotstein  
Miss Weller - - - - - Debby Marchant  
Rosenblatt's Cameraman - - - - - Pat Bins  
Harold Parmelee- - - - - Steve Michiels  
Beulah Baxter- - - - - Sue Weidner  
Jeff Baird - - - - - Bob Vandermause  
Mrs. Patterson - - - - - Marcy Knaus  
Mr. Walberg- - - - - Rod Agamaite  
Teeny Boppers- - - - - Holly Krueger, Cheri Haen

Piano- - - - - Jane Ullman  
Sound- - - - - Grace Hendricks  
Lighting - - - - - Jim Christoff  
Set Design and Construction- - - - - Judy DeGrave, Marc Erickson,  
Sandi Stein  
Properties - - - - - Pam Behrens  
Costumes - - - - - Sandy DeGrave, Terry Abts, Jane Ullman  
Make up- - - - - Chris Servia  
All Hair Styles- - - - - Kim Barberg

OCONTO FALLS - B

"The Monkey's Paw"

W. W. Jacobs and Louis N. Parker

Locale: A Cottage on the Outskirts of Fulham  
Time: Late 1940's  
Director: Donald Voermans  
Assistant Director: Luie Richardt  
Student Director: Kathy Marquardt

Mr. White - - - - - Rick VandenBush  
Mrs. White- - - - - Lisa VandenBush  
Herbert - - - - - Mark Wisniewski  
Sergeant-Major Morris - - - - - Mike Truckey  
Mr. Sampson - - - - - Tim Vandenlangenberg

Stage Manager - - - - - Dennis Belongia  
Lighting Director - - - - - Dennis Belongia  
Make-up Chairman- - - - - Jo Ann Elliott  
Props Chairman- - - - - Judy Brasure  
Costume Chairman- - - - - Lynn Siefert

OSHKOSH WEST - B

"The Doctor in Spite of Himself"  
Jean Moliere

Locale: A forest  
Time: The Seventeenth Century  
Director: Tom Lynch  
Student Director: Rick Bruch

Sganarelle- - - - - Rick Bruch  
Martine - - - - - Debra Bell  
Neighbor- - - - - Tom Hinrichsen  
Valere - - - - - Milt Clarke  
Lucas - - - - - Jeff Stearns  
Jacqueline- - - - - Nancy Bauernfeind  
Geronte - - - - - Jon Scheller  
Lucinde - - - - - Sue Watson  
Leandre - - - - - Tim Palmquist

PLYMOUTH - B

"A Thurber Carnival"  
James Thurber

Locale: None  
Time: Present  
Director: Herb Stoltenberg  
Student Director: Deb Binder

"The Night the Bed Fell"

Narrator - - - - - Jeff Grahl  
Father - - - - - Mark Ferguson  
Mother - - - - - Wanda Weinbauer  
Briggs - - - - - Paul Hahn  
Thurber - - - - - Chuck Pfrang  
Roy - - - - - Scot Jansen  
Herman - - - - - Pat Klieber  
Rex - - - - - Kathy Perronne

"The Wolf at the Door"

Narrator - - - - - Sherri Bennett  
Wolf - - - - - Chuck Pfrang  
Mother - - - - - Claire Schultz  
Father - - - - - Paul Hahn  
Daughter - - - - - Libby Skelton

"The Unicorn in the Garden"

Narrator - - - - - Mark Muschenski  
He - - - - - Chuck Pfrang  
She - - - - - Diane Graf  
Police - - - - - Paul Hahn  
Psychiatrist - - - - - Scot Jansen

"The Little Girl and the Wolf"

Narrator - - - - - Sherri Bennett  
Wolf - - - - - Mark Muschenski  
Girl - - - - - Sue Lau

"Mr. Preble Gets Rid of His Wife"

Miss Daley - - - - - Libby Skelton  
Mr. Preble - - - - - Mark Ferguson  
Mrs. Preble - - - - - Sherri Bennett

(Continued)

(Plymouth Continued)

"The Last Flower"

Narrator - - - - - Scot Jansen  
Girl - - - - - Linda Urban  
Boy - - - - - Chuck Pfrang  
Music - - - - - Mark Ferguson, Sue Lau, Libby Skelton,  
Wanda Weinbauer, Jeff Grahl, Paul Hahn,  
Pat Klieber, Claire Schultz

Crew - - - - - Brian Siegert, Phyllis Harvey, Mike Peters  
Sound - - - - - Linda Urban  
Make up - - - - - Wanda Weinbauer, Sue Griebel

PORT WING SOUTH SHORE - B

"Lysistrata"  
Aristophanes

Locale: Athens  
Time: Fifth Century B.C.  
Director: Anita R. Helske

Lysistrata - - - - - Cassie Fleming  
Colonice - - - - - Mary Anderson  
Myrrhina - - - - - Colleen O'Leary  
Lampito - - - - - Kathy Byrne  
Woman from Anagyras - - - - - Arlene Nelson  
Woman from Salamis - - - - - Linda Lind  
Woman from Boeotia - - - - - Ellen Stohl  
Woman from Corinthia - - - - - Lenore Daubner  
Slave of Lysistrata - - - - - Bonnie Beckman

Stage Manager - - - - - Diane Olson  
Make up and Costumes - - - - - Ann Kinney

POYNETTE - B

"The Breaking of Bread"  
William Watson

Locale: Burned-Out Battlefield  
Time: Civil War  
Director: Mr. Dan Harms  
Student Director: Rick Fisk

Yank - - - - - Ron Anderson  
Reb - - - - - Tim Dickerson

Sound - - - - - Steve Hebel

**DRAMA: Sectional Contests**

**Northern Section at UW - Eau Claire**

Eau Claire Regis - - - - - A	Menomonie- - - - - B
Port Wing South Shore- - - A	Minocqua Lakeland- - - B
Ellsworth- - - - - B	Ashland Ondossagon - - - B
Fall Creek - - - - - B	Spring Valley- - - - - B
Loyal- - - - - B	Superior Senior- - - - - B

**Central Section at UW - La Crosse and St. Norbert's College**

Algoma - - - - - A	Plymouth - - - - - A
Berlin - - - - - A	Green Bay Preble - - - - - A
Elroy Royall - - - - - A	Pulaski- - - - - A
Fish Creek Gibraltar - - - A	Schofield D. C. Everest- - A
La Farge - - - - - A	Iola-Scandinavia - - - B
La Crosse Aquinas- - - - - A	Neenah-Armstrong - - - B
La Crosse Central- - - - - A	Suring - - - - - B
Luxemburg-Casco - - - - - A	Two Rivers - - - - - B
Mosinee- - - - - A	Viroqua- - - - - B
Oconto Falls - - - - - A	West Salem - - - - - B
Oshkosh West - - - - - A	

**Southern Section at Lake Geneva Badger**

Brookfield East- - - - - A	Cedarburg- - - - - B
Cambria-Friesland- - - - - A	Franklin - - - - - B
Evansville - - - - - A	Greendale- - - - - B
Greenfield - - - - - A	Mc Farland - - - - - B
New Berlin - - - - - A	Reedsburg Webb - - - - - B
New Berlin Eisenhower- - - A	Shullsburg - - - - - B
Port Washington- - - - - A	Waunakee - - - - - B
Poynette - - - - - A	Whitewater - - - - - B
Whitefish Bay- - - - - A	Columbus - - - - - C

**DRAMA: District Contests**

**Eau Claire District at Loyal**

Eau Claire Regis - - - - - A	Cadott - - - - - B
Fall Creek - - - - - A	Chippewa Falls Sr- - - - - B
Loyal- - - - - A	Gilmanon- - - - - B
Menomonie Sr - - - - - A	Greenwood- - - - - B

**Green Bay District at De Pere**

Algoma - - - - - A	Coleman- - - - - B
Fish Creek Gibraltar - - - A	Gillett- - - - - B
Luxemburg-Casco- - - - - A	Niagara- - - - - B
Oconto Falls - - - - - A	Oneida Sacred Heart- - - B
Green Bay Preble - - - - - A	Pembin- - - - - B
Pulaski- - - - - A	Seymour- - - - - B
Suring - - - - - A	Washington Island- - - - - B
Green Bay Ashwaubenon- - - B	West De Pere - - - - - B

**Kenosha District at Union Grove**

Franklin - - - - - A	Cudahy Sr- - - - - B
Greendale- - - - - A	Kenosha Bradford - - - - - B
Greenfield - - - - - A	Racine Horlick - - - - - B
New Berlin - - - - - A	Union Grove- - - - - B
New Berlin Eisenhower- - - A	

**La Crosse District at UW - La Crosse**

La Crosse Aquinas- - - - - A	Westby - - - - - A
La Crosse Central- - - - - A	Independence - - - - - B
La Farge - - - - - A	Sparta - - - - - B
Royall - - - - - A	Westby - - - - - B
Viroqua- - - - - A	Whitehall- - - - - B

**Milwaukee District at Port Washington**

Brookfield East- - - - - A	Brown Deer - - - - - B
Cedarburg- - - - - A	Germantown - - - - - B
Port Washington- - - - - A	Hartford - - - - - B
Whitefish Bay- - - - - A	Milwaukee Edison - - - - - B
Brookfield Central - - - - - B	Milwaukee Madison- - - - - B

**Oshkosh District at UW - Sheboygan**

Berlin - - - - - A	Two Rivers - - - - - A
Neenah-Armstrong - - - - - A	Elkhart Lake - - - - - B
Oshkosh West - - - - - A	Mishicot - - - - - B
Plymouth - - - - - A	Winneconne - - - - - B

**Platteville District at UW - Platteville**

Reedsburg- - - - - A	Orfordville Parkview - - - - - B
Shullsburg - - - - - A	Riverdale- - - - - B
New Glarus - - - - - B	

**River Falls District at UW - River Falls**

Ellsworth- - - - - A	River Falls- - - - - B
Spring Valley- - - - - A	Turtle Lake- - - - - B
Luck - - - - - B	

**Stevens Point District at Schofield**

Iola-Scandinavia - - - - - A	Three Lakes- - - - - B
Mosinee- - - - - A	Adams-Friendship - - - - - C
Schofield D. C. Everest- - - A	Medford- - - - - C
Antigo - - - - - B	Wittenberg-Birnamwood- - - C
Elcho- - - - - B	

**Superior District at Park Falls**

Superior - - - - - A	Hayward- - - - - B
Ashland Ondossagon - - - - - A	Park Falls - - - - - B
Port Wing- - - - - A	Maple- - - - - B
Minocqua Lakeland- - - - - A	

Whitewater District at UW - Whitewater

Cambria-Friesland - - - - - A	Whitewater - - - - - A
Columbus - - - - - A	Johnson Creek - - - - - B
Evansville - - - - - A	Lake Geneva Badger - - - - - B
Mc Farland - - - - - A	Sun Prairie - - - - - B
Poynette - - - - - A	Waunakee - - - - - B

DRAMA: Summary of Participation, 1973-74

Eau Claire District  
(44 Member Schools)

	<u>Local</u>	<u>Sub-District</u>	<u>District</u>	<u>Sectional</u>	<u>State</u>
Schools	11	11	8	4	1
Students	198	160	132	98	3
		<u>Ratings</u>	<u>Ratings</u>	<u>Ratings</u>	
		4A	1A	1A	
		4B	3B		

Green Bay District  
(52 Member Schools)

	<u>Local</u>	<u>Sub-District</u>	<u>District</u>	<u>Sectional</u>	<u>State</u>
Schools	33	33	16	7	6
Students	347	301	168	134	123
		<u>Ratings</u>	<u>Ratings</u>	<u>Ratings</u>	
		7A	6A	2A	
		9B	1B	4B	

Kenosha District  
(40 Member Schools)

	<u>Local</u>	<u>Sub-District</u>	<u>District</u>	<u>Sectional</u>	<u>State</u>
Schools	6	17	9	5	3
Students	144	177	120	89	42
		<u>Ratings</u>	<u>Ratings</u>	<u>Ratings</u>	
		5A	3A	3A	
		4B	2B		

La Crosse District  
(36 Member Schools)

	<u>Local</u>	<u>Sub-District</u>	<u>District</u>	<u>Sectional</u>	<u>State</u>
Schools	18	18	10	6	4
Students	107	76	54	32	18
		<u>Ratings</u>	<u>Ratings</u>	<u>Ratings</u>	
		6A	4A	2A	
		4B	2B	2B	

Milwaukee District  
(42 Member Schools)

	<u>Local</u>	<u>Sub-District</u>	<u>District</u>	<u>Sectional</u>	<u>State</u>
Schools	8	20	10	4	3
Students	133	216	164	94	75
			<u>Ratings</u>	<u>Ratings</u>	<u>Ratings</u>
			4A	3A	2A
			6B	1B	1B

Oshkosh District  
(52 Member Schools)

	<u>Local</u>	<u>Sub-District</u>	<u>District</u>	<u>Sectional</u>	<u>State</u>
Schools	16	16	8	5	3
Students	301	228	99	74	29
			<u>Ratings</u>	<u>Ratings</u>	<u>Ratings</u>
			5A	3A	1A
			3B	2B	2B

Platteville District  
(39 Member Schools)

	<u>Local</u>	<u>Sub-District</u>	<u>District</u>	<u>Sectional</u>	<u>State</u>
Schools	0	11	5	2	0
Students	0	107	65	17	0
			<u>Ratings</u>	<u>Ratings</u>	
			2A	0A	
			3B	2B	

River Falls District  
(28 Member Schools)

	<u>Local</u>	<u>Sub-District</u>	<u>District</u>	<u>Sectional</u>	<u>State</u>
Schools	5	5	5	2	0
Students	36	35	35	12	0
			<u>Ratings</u>	<u>Ratings</u>	
			2A	0A	
			3B	2B	

Stevens Point District  
(54 Member Schools)

	<u>Local</u>	<u>Sub-District</u>	<u>District</u>	<u>Sectional</u>	<u>State</u>
Schools	22	20	9	3	2
Students	259	189	84	34	24
			<u>Ratings</u>	<u>Ratings</u>	<u>Ratings</u>
			3A	2A	2A
			3B	1B	0B
			3C		

## CALENDAR INFORMATION

Superior District (23 Member Schools)					
	<u>Local</u>	<u>Sub-District</u>	<u>District</u>	<u>Sectional</u>	<u>State</u>
Schools	11	11	7	4	1
Students	351	200	119	71	11
			<u>Ratings</u>	<u>Ratings</u>	<u>Ratings</u>
			4A	1A	0A
			3B	3B	1B
Whitewater District (54 Member Schools)					
	<u>Local</u>	<u>Sub-District</u>	<u>District</u>	<u>Sectional</u>	<u>State</u>
Schools	24	21	10	7	3
Students	450	261	150	104	14
			<u>Ratings</u>	<u>Ratings</u>	<u>Ratings</u>
			6A	3A	1A
			4B	3B	2B
				1C	
Totals - - - - - 464 Member Schools					
	<u>Local</u>	<u>Sub-District</u>	<u>District</u>	<u>Sectional</u>	<u>State</u>
Schools	154	183	97	49	26
Students	2326	1950	1190	759	339
			<u>Ratings</u>	<u>Ratings</u>	<u>Ratings</u>
			48A	26A	14A
			46B	22B	12B
			3C	1C	

The following events have been scheduled since the publication of the September Newsletter.

- January 12 Superior District WHSFA workshop, Ashland High School. Contact Larry E. Larmer, WHSFA Secretary-Treasurer, or Frank Cirilli, Superior District Chairman.
- January 17 Whitewater District WHSFA workshop, Wisconsin Center, University of Wisconsin-Madison. Contact Larry E. Larmer, WHSFA Secretary-Treasurer, or George Buckingham, Whitewater District Chairman.
- January 19 Green Bay District WHSFA workshop, East De Pere High School. Contact Larry E. Larmer, WHSFA Secretary-Treasurer, or James Trachte, Green Bay District Chairman.
- January 23 (Tentative) Platteville District WHSFA workshop, University of Wisconsin-Platteville. Contact Larry E. Larmer, WHSFA Secretary-Treasurer, or Robert Beaver, Platteville District Chairman.
- February 1 Kenosha District WHSFA workshop, University of Wisconsin-Parkside (Kenosha). Contact Larry E. Larmer, WHSFA Secretary-Treasurer, or James Highland, Kenosha District Chairman.
- April 4, 5, and 6 Central States Speech Association Convention, Marc Plaza Hotel, Milwaukee. Competitive paper programs include: teaching in the secondary and elementary schools; sexism and communication; persuasion and social influence; interpersonal and small group communication. Of special interest will be a "swap shop" for secondary teachers and a junior high reading chorus. For more information, contact Tom Pinter, Oconomowoc High School.
- April 18, 19 and 20 Theatre Outreach Program-Superior, University of Wisconsin-Superior. Includes a workshop featuring WHSFA "A" winners at the State Contest; a Theatre X presentation; several sessions devoted to production techniques. Contact the Department of Speech and Drama, University of Wisconsin-Superior.

PART V: PROFESSIONAL INTEREST

JUDGES AND JUDGING

William Hintz

Lake Geneva Badger High School  
WHSFA Southern Section Chairman

"How can a sweet little girl like you talk about such a serious subject?" "When talking to a group you should wear a girdle."  
"Since three people are using dialect I will give one of them an A."  
"You are too dramatic." "You are not dramatic enough." "The entire section was so close that I'm going to give all of you the same grade." "It was excellent but somehow it didn't sound right to me." "No one really won the debate, so I will give the decision to the negative team." "It was really a good speech; I liked the way you organized and delivered your talk--grade B."

Any Forensic coach can enumerate countless inept and destructive comments from judges' critiques. To this you can add numerous eye-witness reports of judges looking out the window, reading the daily paper, and even falling asleep. This is difficult to justify to students and coaches alike. In fact it should not happen at all.

It will be the purpose of this paper to define what qualities a "good" judge should have, what they should do, and how to train a judge from within your own school.

The philosophy that will guide me is the current philosophy held by my school. Badger High must inspire the individual to think critically, to develop his talents, and to accept the tenets of American Democracy. To promote these goals, our school must actively pursue them through a staff of well-educated, practical, dedicated teachers. Our task is to harness youthful energy and turn it into adult responsibility. The job in co-curricular activities is to develop special skills to the fullest extent possible within each student. The quality of judging can either help or hinder the achievement of this objective.

A judge has God-like functions. He is the person who makes the decision and determines winners and losers. We hope judges have the wisdom of Solomon; in reality, he is less than perfect. As a coach be happy if the judge is:

1. A human being aware of dealing with other human beings. To be discourteous, read the paper, smoke, correct papers, or fall asleep is inhumane to the contest speaker. Such practices seem all too frequent and widespread. I have seen it happen in Milwaukee and in New Orleans. Moreover, to treat a student or a debate team in a destructive way after the event, in a critique session, brings no learning to the students and may make them bitter--not only toward the judge but toward all co-curricular forensic activities. Contests should be a learning activity for the student. These considerations should be pointed out to judges at every appropriate opportunity.
2. Knowledgeable about the contest that he is judging. To be ignorant of the rules, time limits, place of contest, time of section, or the schedule to follow is indefensible. Nothing

upsets a contestant more than a judge who wanders in late and asks the students what the rules for the contest are. Some district chairmen send each judge the rules for the contest he will be judging a week prior to the date and then when the judges come to the contest he sits them down and reads the rules to them. Such chairmen seem to have fewer complaints about judging and the way the rules apply than others. When you hire a judge it is wise to go over the rules with him.

3. Experienced in dealing with students and, if possible, in judging. You can find master teachers and judges who have successfully dealt with students and have from 2 to 20 years of experience in judging. One of the reasons these people are still judging is the fact that they understand students and they care about what happens to them. They also have been around long enough to know what is going on. Many of these people are known for their special skills in judging certain events or categories.
4. Objective and honest in his decision making. Subjectivity in speaking contests will never be completely removed. However, if the judge is honest and ethical and looks at his own biases, this subjectivity can be minimized. It is also a good idea to remove from the contestants any identification that will create or promote possible additional factors relating to judge bias. One technique some "good" judges use is to take a minute prior to the contest and tell the contestants what he is looking for or expects in the event. This allows all students the same information about the judge and the contest being judged.
5. Knowledgeable about the communication process and the principles of good speaking. Having a background or experience in basic speech and being able to recognize superior communications is always helpful. It creates a real learning experience and permits an honest and direct critique. It provides a solid background for decision making in the contest.
6. Following directions of the tournament and the tournament director or contest chairman. Too often judges use their own rating system, fail to complete a ballot properly and sometimes don't even turn them in. By taking time at a judges' meeting prior to the contest and providing judges with written instructions, this can be alleviated. The key to getting results is to have the ballots turned in after each round. The people working in the tabulation room must have the results to schedule new sections or compile results. If they don't have the ballots the contest can be one or two hours longer than anticipated.

Well qualified, experienced, intelligent, and fair judges will differ in their evaluations of many contests. As a coach, you must learn to live with this and prepare your student for it. What is an "A" today in round one with judge X might be a "B" with judge Y in round two. In every competitive event there are winners and losers, though we hope that all learn from the experience. The winners may be cautioned to be modest, and the losers can be helped with understanding. The coach, win or lose, must be in control of himself so that

he can help the students. All participants must be brought to realize that the decision-making process is part of the entire structure.

If the judge is incompetent there is usually no recourse to salve the emotion of the student or coach at the time. At best, you can try to have the incompetent judge eliminated from judging future contests. Being realistic, plan on at least one bad decision at every large contest you attend. Many times the "squirrel" can be identified on the basis of his preliminary judging and can be withheld or excused from judging semi-final or final rounds by the contest manager. Another course of action is to discuss judging and judging standards very honestly with him. Do this with tact and diplomacy and eventually you might get the desired result.

#### Training a Judge

In many of today's contests you are asked to bring or recommend judges. Where do you find competent judges? The one possible solution is to train them yourself. Find people who are interested in students and are willing to spend a Saturday judging. The motivation besides the interest in the program and the students is the \$20 to \$25 dollars they will get paid. It could be a guidance counselor, Home Economics teacher, or even a Latin teacher. These people, of course, are used after you utilize any speech teacher, interested English teachers, and old debate coaches on your staff.

Once you have the warm bodies your job begins. Expose them to the rules of the contest in their interest area as well as your philosophy about the contest structure. Send a student or several students who have been successful in the particular event and let the beginning judge hear them and write comments. Check the comments and critique the judging with the judge. Then send the novice judge some students with less experience, let him assist the student and then judge and critique the speaker. Again you as coach discuss the critique. It is usually easy to see the difference between a good speaker and a poor one. The difficult procedure is to tell the good ones from the almost good ones. The next stage in training is to mix up the speakers, both good, almost good, and poor and let the judge rank and critique the group. Again go over the results. This can be done in a study hall or an activity period so that your trainee does not have to use his time after school or in the evening. After about two or three weeks you have a budding judge.

The first contest to which you take your neophyte should be a festival so that any glaring error in judgment would not punish a school or an individual in the learning experience. Only let him judge what you have trained him for and he is familiar with. If he is placed in another section or category that he has not had experience with, take the judging assignment yourself or go to the festival manager and have the assignment changed.

After several festivals and a continuation of using your own students you can expand on his one category eventually to include either all of the dramatic events or all of the public address events. This will give you and any contest directors more flexibility in assigning your judge at a contest.

An adjunct to this would be to send the neophyte to a judging or coaching clinic. This will not answer all of the questions of a new judge, but this exposure will be helpful in creating the learning environment that you want your judge to have in his future experiences.

In debate you are going to need more time and a different approach. Here, start with your novice judge attending debates with a qualified judge. Discuss the critique and the reasons for the decision with the trainee. Of course there are several readings that you can use to get the trainee on the right track; the Wisconsin Debate Coaches Handbook is a good place to start. Then, after you have confidence in his ability in constructing a flow sheet or outline and making decisions, work him into a class B or C debate as a judge. Follow his progress carefully and when he has enough experience at one level move him up to the varsity level. Actually, judging on the varsity level should be a great deal easier because the debaters are superior to the novices. Again, it is easier to tell the good from the poor than the good from the almost good in a debate. In debate judging it might take you one whole season or longer to train your own judge. Be patient.

The best judges seem to be high school coaches and assistant coaches. Former students who are now undergraduates on college campuses is another source of possible judges. Also, writing the speech department of any college might bring you some good judges, but look out for the "squirrels" hiding in the ivory tower.

WHSFA Policies and Guidelines Pursuant  
to the Energy Crisis

Realizing that all activities of the WHSFA involve travel on the part of participating schools and judges and, in some cases, by members of the Board of Control, the Association accepts its obligation to take steps to reduce fuel consumption related to these activities. Accordingly, this memo reports those measures which shall govern travel by State Office personnel and member schools participating in activities at the state level. Such recourses are also recommended to district and sectional chairmen.

It should be noted that many debate and forensic tournaments and contests are invitational in nature or otherwise outside the control of the WHSFA. However, the steps reported here clearly imply guidelines to coaches in planning travel to or the hosting of non-WHSFA events.

1. While all presently scheduled travel obligations of State Office personnel shall be kept, no further non-essential travel plans shall be made.
2. Wherever possible, public transportation facilities shall be utilized by State Office personnel.
3. The State Office shall encourage WHSFA Board members to travel together or to utilize public transportation facilities in attending the May Board meeting.
4. Member schools participating in the State Debate Tournament and the State Speech Contest are requested, if at all possible, to travel together or to utilize public transportation.
5. Judges hired for the State Debate Tournament shall be requested to travel together or to utilize public transportation. If possible, the State Office will avoid hiring judges who cannot or will not make such arrangements.
6. For judges at the State Speech Contest, preference in hiring shall be extended to those high school teachers who will be traveling to the contest with their students. All other judges shall be requested to travel together or utilize public transportation. If at all possible, the State Office shall avoid hiring judges who cannot or will not make such arrangements.
7. When WHSFA personnel or personnel from member schools attending WHSFA events find it necessary to utilize private transportation, they are hereby urged to observe strictly whatever existing reduced speed recommendations may prevail.