

Wisconsin High School Forensic Association Newsletter

Vol. XLVI

Madison, Wisconsin, December 1974

No. 2



WISCONSIN HIGH SCHOOL FORENSIC ASSOCIATION

LOWELL HALL, 610 LANGDON STREET

MADISON, WISCONSIN 53706

affiliated with

UNIVERSITY OF WISCONSIN - EXTENSION

CALENDAR FOR 1974-75

DATES FOR CONTESTS

	Drama (1974)	Debate (1975)	Speech (1975)
Subdistrict . . .	*Nov 2 . . .		*Mar 1
District	Nov 16 . . .	Feb 8 . . .	Mar 15
Section	Nov 23 . . .		
State	Dec 6-7 . . .	Feb 21-22 . .	Apr 19
*Latest dates for subdistrict contests; all others are firm.			
WEA Convention	Nov 7-8, 1974	Thanksgiving	Nov 28, 1974
Board Meetings	Nov 5-6, 1974	Easter	Mar 30, 1975
	May 1-2, 1975	State Basketball	Mar 22, 1975

BOARD OF CONTROL

<u>NORTHERN SECTION</u>	<u>CENTRAL SECTION</u>	<u>SOUTHERN SECTION</u>
R. M. Duesterbeck Durand 54736 715 672-8917	Fern Stefoni Rhineland 54501 715 362-6955	William Hintz Lake Geneva 53147 414 248-6243
<u>Eau Claire District</u> Bernard H. Bennett Cornell 54732 715 239-6464	<u>Green Bay District</u> William O'Brien Pulaski 54162 414 822-3283	<u>Kenosha District</u> James Highland Union Grove 53182 414 878-2434
<u>River Falls District</u> Wayne Gustafson Osceola 54020 715 294-2127	<u>La Crosse District</u> Edwin Sievers Viroqua 54665 608 637-3191	<u>Milwaukee District</u> Raymond Behnke Cedarburg 53012 414 377-6030
<u>Superior District</u> Frank Cirilli Superior 54880 715 394-0269	<u>Oshkosh District</u> Gaylord Unbehauen Brillion 54110 414 756-2166	<u>Platteville District</u> Robert Beaver Platteville 53818 608 348-2681
	<u>Stevens Point District</u> Edsel Vergin Mosinee 54455 715 693-2530	<u>Whitewater District</u> George Buckingham Whitewater 53190 414 473-2611

Chairman of the Board: George Buckingham, Whitewater
 Vice-Chairman of the Board: Frank Cirilli, Superior
 Advisor in Speech: Pauline Isaacson, UW-Stevens Point
 Advisor in Drama: Calvin Quayle, UW-Eau Claire

Secretary-Treasurer: Larry E. Larmer
 Room 218 Lowell Hall
 610 Langdon Street
 Madison, Wisconsin 53706
 608 262-2313

TABLE OF CONTENTS

PART I: THE BOARD OF CONTROL - - - - -	1
November Board Meeting - - - - -	1
WHSFA Board Elections- - - - -	3
Energy Conservation Guidelines - - - - -	4
PART II: THE STATE OFFICE- - - - -	5
Workshops Planned- - - - -	5
Revisions in Debate Topic Selection Procedure- - - - -	5
Questions and Answers on WHSFA Contests- - - - -	5
PART III: SCHOOLS AND STUDENTS - - - - -	7
The State Drama Contest- - - - -	7
Sectional Drama Contests - - - - -	30
District Drama Contests- - - - -	31
Summary 1974-75 Drama Contest Participation- - - - -	33
PART IV: CALENDAR INFORMATION- - - - -	36
PART V: PROFESSIONAL INTEREST- - - - -	37
Selection of Debate Topics - - - - -	37

PART I: THE BOARD OF CONTROL

November Board Meeting

The regular meeting of the WHSFA Board of Control was held on November 5-6, 1974, at the Holiday Inn #1 in Madison. Abstracted from the minutes of that meeting are the following items:

- Welcomed: New Board members Wayne Gustafson (River Falls District) and Bill O'Brien (Green Bay District).
- Elected: Board Chairman - George Buckingham (Whitewater District)
Board Vice-Chairman - Frank Cirilli (Superior District)
- Appointed: Larmer and Duesterbeck as committee to seek improvement in the debate topic selection procedure.
- Approved: Designation of University of Wisconsin-Stevens Point as site of the 1975 State Debate Tournament.
- Suggested: Bids be accepted from interested schools for site of 1976 State Debate Tournament.
- Accepted: Auditor's report for 1973-74 fiscal year (page 4, September 1974 WHSFA Newsletter).
- Accepted: Report of Committee on University Extension relations which included:
- a. An increase in the annual payment from WHSFA to UWEX to \$12,000 for fiscal year 1974-75.
 - b. An increase in the annual payment from WHSFA to UWEX to \$13,500 for fiscal year 1975-76.
 - c. Beginning in fiscal year July 1, 1976, and every year thereafter, the annual payment from WHSFA to UWEX will be sixty percent of staff salaries.
 - d. The annual payment from WHSFA to UWEX for any given fiscal year shall be reduced in accordance with the amount that the Association provides in direct subsidy of University Extension programs.
 - e. A \$10 across-the-board dues increase for WHSFA member schools beginning with the 1975-76 membership year.
 - f. The procedure for amending the WHSFA be inaugurated which would seek to amend Article IV, Section 1d, by striking the sentence, "The Secretary-Treasurer shall be a member of the University of Wisconsin-Extension Department of Communication Arts of the University of Wisconsin."

Accepted: The Contest Study Committee report which included the following:

- a. Acceptance of the debate rules as printed in the 1974-75 Teachers Manual with the exceptions that Rule 7c(8) be eliminated and that Rule 7b(4) be revised to provide for single first, second, and third place winners in four-speaker debate.
- b. Add to WHSFA General Rule 8c, "In the State Debate Tournament coaches with teams in one division may be assigned to judge in the other division without the explicit approval of a majority of the participating schools."
- c. Change the debate awards to provide school plaques for third-place winners in each division and silver medals for debaters on teams losing in the quarter finals in the two-speaker division.
- d. Strike General Rule 12 and add to General Rule 13a, "... the judging honorarium and the order of contestants."
- e. Change General Rule 13b to provide that the registration fees for State Speech be \$5 per individual contestant and \$10 per Play-Acting group.
- f. Change Drama Rule 2 by adding to the first sentence, "... with two or more student performers."
- g. Revise Rule 1 of Demonstration Speaking to read: "The purpose of this category is to allow the contestant to develop his ability to use materials to demonstrate a skill, an object, or a process. Speeches clearly falling within the intent of this category would be those which demonstrate how to do something or those which demonstrate how something works. The use of auxiliary materials (e.g., an object of demonstration, audio-visual aids) is required."
- h. Add as a new Demonstration-Speaking Rule 5, renumbering the subsequent rules: "The contestant may use one other person as the object of demonstration. The contestant may use one other person to assist in setting up or striking down the equipment used in demonstrating. One other person may serve as both an object of demonstration and an assistant in handling equipment. However, under no circumstances shall there be more than one person other than the contestant involved in a particular demonstration speech

presentation. The other person must fulfill WHSFA contestant eligibility requirements, but will not be considered a contestant; registration fees will not be assessed on this person, and he or she will not be eligible to receive an award. There is no prohibition against a contestant in another category assisting the demonstration speaker or serving as the object of demonstration; however, contest managers are not responsible for special scheduling arrangements that this may require."

- i. Add to Storytelling Rule 4: "The contestant may either sit or stand during the presentation."
- j. Add to General Rules that, "Major contest changes suggested at one Board meeting shall not be implemented prior to the subsequent meeting unless special circumstances demand more immediate action." Motion passed.

Designated: R. M. Duesterbeck (Northern Section) to be the WHSFA official delegate to the NUEA Committee on Discussion and Debate meeting to be held in St. Louis in December.

Suggested: That the Secretary-Treasurer circulate to administrators of member schools an open letter which would clarify the nature and scope of WHSFA activities.

Adopted: New Spring Speech Eligibility-Registration forms which would accommodate the new contests and changes in entry regulations.

Revised: Energy conservation guidelines for 1974-75.

1975 Elections

In the spring of 1975, the State Office will conduct elections for the chairs of the Central Section, the Green Bay District, the Oshkosh District, the Platteville District, and the Whitewater District.

Ms. Fern Stefoniak, current chairperson of the Central Section, will not be a candidate for re-election.

Mr. Bill O'Brien, current chairperson of the Green Bay District, will be a candidate for re-election.

Mr. Gaylord Unbehaun, current chairperson of the Oshkosh District, will not be a candidate for re-election.

Mr. Robert Beaver, current chairperson of the Platteville District, will be a candidate for re-election.

Mr. George Buckingham, current chairperson of the Whitewater District, will be a candidate for re-election.

1974-75 WHSFA Policies and Guidelines on Energy Conservation

Realizing that all activities of the WHSFA involve travel on the part of participating schools and judges and, in some case, by members of the Board of Control, the Association accepts its obligation to take steps to conserve fuel consumption related to these activities. Accordingly, this statement reports those measures which shall govern travel by State Office personnel and member schools participating in activities at the state level. Such policies are also recommended to district and sectional chairmen.

It should be noted that many debate and forensic tournaments and contests are invitational in nature or otherwise outside the control of the WHSFA.

1. The State Office shall encourage WHSFA Board members to travel together or to utilize public transportation facilities in attending Board meetings.
2. Member schools participating in the State Debate Tournament and the State Speech Contest are requested, if at all possible, to travel together or to utilize public transportation.
3. Judges hired for the State Debate Tournament shall be requested to travel together or to utilize public transportation. If possible, the State Office will avoid hiring judges who cannot or will not make such arrangements.
4. For judges at the State Speech Contest, preference in hiring shall be extended to those high school teachers who will be traveling to the contest with their students. All other judges shall be requested to travel together or utilize public transportation. If at all possible, the State Office shall avoid hiring judges who cannot or will not make such arrangements.
5. When WHSFA personnel or personnel from member schools attending WHSFA events find it necessary to utilize private transportation, they are hereby urged to observe strictly whatever existing speed regulations may prevail.

PART II: THE STATE OFFICE

Workshops Planned

In cooperation with University of Wisconsin-Extension, the WHSFA is planning a number of workshops involving secondary school forensic students and teachers. Below is a preliminary listing. For further information on any of the programs, contact the State Office.

- January 11, 1975: One-day forensic workshop for students and teachers; UW-Platteville.
- January 18, 1975: One-day forensic workshop for students and teachers; Rice Lake High School
- June 16-27, 1975: Two-week summer forensic workshop for students; possible credit offering for teachers; UW-Whitewater.
- July-August, 1975: Two, two-week summer workshops for students in forensics and debate; possible credit offerings for teachers; UW-Oshkosh.

Revisions in Debate Topic Selection Procedure

Due to the difficulties encountered with Wisconsin's choice of the 1974-75 debate topic which differed from the surrounding states and the confusion related to how to call for a re-vote, modest revisions in the topic selection procedure will be made on a trial basis for the choice of the 1975-76 topic. The major alterations will be the following:

- a. Once the problem area has been announced and the alternative debate propositions are known, the State Office will ask a committee to report to member schools regarding the possible advantages and disadvantages of each proposition.
- b. Ballots will be returned earlier and if, by May 1, it is known that at least two of the surrounding states have chosen a topic different from Wisconsin, an automatic re-vote will be taken.
- c. A re-vote can be called for at any time provided 25 signatures of debate directors of member schools are received in the State Office during a three-week period.

Questions and Answers on WHSFA Contests

Regardless of how careful one tries to be in phrasing contest rules, there are some questions which are bound to arise which are not clearly covered by the rules. This creates the need for teachers and students in member schools to write in with questions about rule interpretations. In order to provide a record of such questions and their answers which could become a sort of "common law," we are starting a question-answer section to be included in Newsletters as needed. Below are some recent questions and their answers.

Question: May a play entered in the Drama Contest contain only one character?

Answer: Prior to the November, 1974, Board meeting, there was no explicit prohibition against using a play with only one character. However, in November the Board altered Drama Rule 2 so that at least two student performers are required.

Question: In the Drama Contest, may a school's play from the previous year's Play-Acting contest be entered?

Answer: A school may use the same production entered the previous year's Play-Acting contest in the Drama Contest. You may not use the same Drama Contest production for two successive years (Drama Rule 2). Also, a school may not use the same cutting or scene in Play Acting for two successive years, nor may it use a scene from its Drama Contest in Play Acting during the same school year (Play-Acting Rule 7).

Question: In Poetry Reading, may a person take the lyrics from a song and use it as the selection or cutting?

Answer: Yes, song lyrics are acceptable as material for Poetry Reading.

PART III: SCHOOLS AND STUDENTS

The State Contest

The State Drama Contest was held at the University of Wisconsin-Stevens Point on December 6-7, 1974. The next few pages report the awards earned by the 506 students from the twenty-nine schools participating.

BROOKFIELD CENTRAL

"A"

"This Property is Condemned"
Tennessee Williams

Locale: Outskirts of a Southern Town
Time: Present

On the outskirts of a small Mississippi town a young girl, Willie, is walking along the railroad tracks. She meets a boy, Tom, who is flying his kite, and they begin to talk. Tom learns about Willie's dead sister, Alva, who she tries so hard to emulate, and becomes fascinated by this strange girl. They talk for awhile then Alva leaves.

Director: Susan Schoenfeld

Willie - - - - - Mary Kampine
Tom - - - - - Scott Streiff

Stage Manager - - - - - Dina Saunders
Lighting - - - - - Jeff Brown

Costumes - - - - - Debbie Halter
Sets - - - - - Jeff Reid

Props - - - - - Vicky Sanders
Lynn Gore

Make-up - - - - - Beth Quick, Lynn Kaufman, Lisa Graff

CHIPPEWA FALLS SR

"A"

"Spoon River Anthology"
Edgar Lee Masters

Locale: Spoon River Cemetery
Time: 1800's

In a small town everyone knows everyone else, gossip is abundant, personal successes and failures are known. Edgar Lee Masters creates the essence of a small town in Spoon River Anthology, a collection of epitaphs from the graves of the people in the town where he

lived as a boy. Through Charles Aidman and Naomi Hirschhorn's adaptation for the stage of Masters' characters, the Elsa Wertmans, Hamilton Greens, and Emily Sparks come alive, interact moreso in death than in life, and reveal their hidden stories.

Director: Donald Burke

Male Singer- - - - - Joe Berrum
 Female Singer- - - - - Roberta Martin
 Actors- - - - - -David Hodowanic
 John Reiter
 Brian van Stavern
 Actresses- - - - - -Roxy Hanson
 Ann Meske
 Lori Jeanne Peloquin
 Vicki Preuss
 Stage Manager- - - - - -David Mueller



Chippewa Falls SR's production of "Spoon River Anthology" received an "A" award at the State Drama Contest. The play was directed by Donald Burke.

GREENFIELD

"A"

"Games"

George Houston Bass

Locale: A Playground or Empty Field

Time: Today

THE STORY: Children play games. But so do adults. In Games, George Houston Bass uses children's games to explore the ideas of individuality vs. conformity and acceptance vs. rejection.

Director: Carol Konet

The Gang- - - - - Peggy Brill
 Jodi Harrison
 Dave Jankowski
 Sue Jansen
 Joe Karpfinger
 John Klein
 Tina Vogel
 The Victim- - - - - Dianna Sorrem
 Make-up - - - - - -Pat Gureski, Liz Hagie, Sharon Henrickson,
 Sandy Jaeger, Sue Jansen, Roxanne Mason, Pam Malecki,
 Sue Pack, Cindy Pulte, Dianna Sorrem, Liz Wallenfang
 Costumes- - - - -Jan Brien, Pam Malecki, Joanne Masnica, Roxanne Mason,
 Ginny Mueller, Joyce Obarski

LUXEBURG-CASCO

"A"

"The Merry Wives of Windsor"

William Shakespeare

(Cutting by Lynda Miller)

Locale: WINDSOR--Outside the Page and Ford Homes, Windsor Park, the Ford's Home and Garter Inn

Falstaff fires his servants and plots to woo Mistress Ford and Mistress Page in order to steal money from their husbands. The women, appalled by Falstaff's overture, decide to lead him on and then frighten him out of his wits. Meanwhile, the servants, angry at being fired, tip off the husbands. Mr. Page ignores the message but Mr. Ford, instantly jealous, disguises himself as Mr. Brooks and sets out to find the truth.

Page's daughter, Anne, also has romantic difficulties. Her mother wants her to marry Dr. Caius; her father prefers Slender, the idiot; and Anne prefers Fenton.

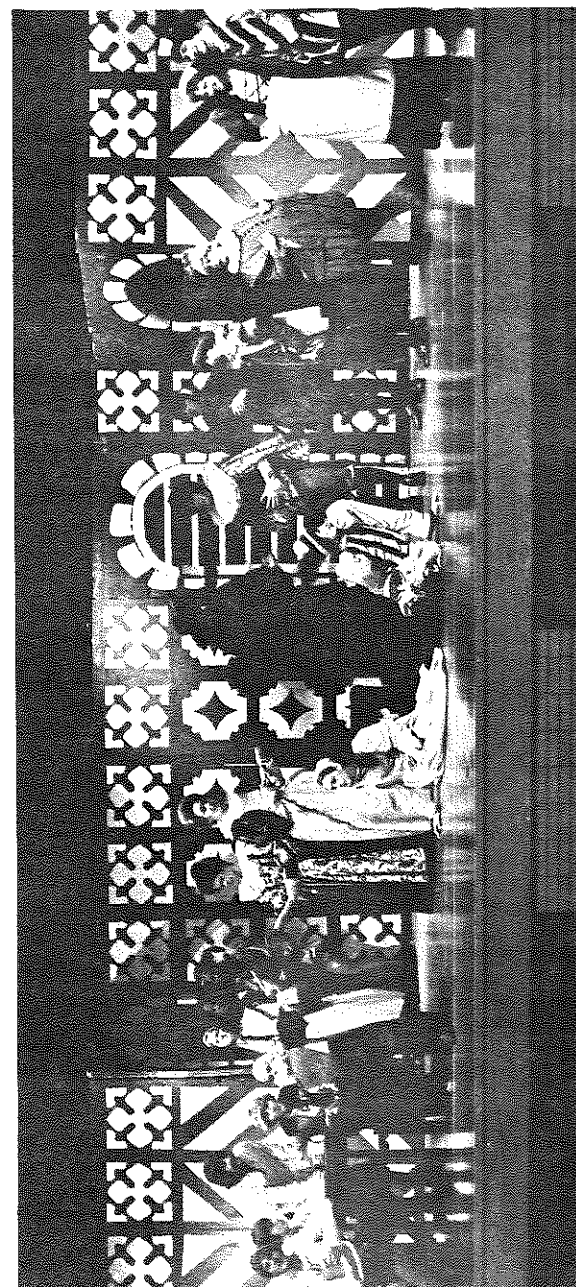
In the final scene the women, having told their husbands about Falstaff's letters, bring Falstaff to the woods dressed as Herne the Hunter (half man, half buck). Here Falstaff is tormented by friends of the Pages and Fords.

Anne is expected by her father to run off with Slender; her mother expects her to run off with Dr. Caius. Instead, Anne elopes with Fenton, and Slender and the doctor end up with boys dressed in the fairy costume that Anne was supposed to be wearing.

Director: Lynda Miller
Student Director: Kathy Szumiel

Sir John Falstaff-	- - - - -	Bob Barbiaux
Mistress Page-	- - - - -	Diane Dorner
Mistress Ford-	- - - - -	Gail Ploof
Master Page-	- - - - -	Rod Agamaite
Master Ford-	- - - - -	Steve DeBaker
Fenton -	- - - - -	Bob Vandermause
Anne Page-	- - - - -	Mary Paye
Mistress Quickly -	- - - - -	Holly Krueger
Shallow- -	- - - - -	Sandi Stein
Slender- -	- - - - -	Mark DeBaker
Host of the Garter Inn -	- - - - -	Orville Fameree
Dr. Caius-	- - - - -	Carol Hanna
Sir Hugh Evans -	- - - - -	Dan Majeski
John -	- - - - -	Dave Phillips
Robert -	- - - - -	Larry Seidl
Musicians-	- - - - -	Karen Lemens
		Sue Kinnard
		Mary Johnson

Stage Manager-	- - - - -	Kathy Szumiel
Costume Chairman -	- - - - -	Paula Bostwick
Junior Chairman-	- - - - -	Dawn LeLou
Hair Stylist -	- - - - -	Kim Barberg
Assistant-	- - - - -	Shelly Shilbauer
Prop Chairman-	- - - - -	Sue Weidner
Light Technician -	- - - - -	Jill Dalebroux
		Terry Charles
Scenery- -	- - - - -	Debby Marchant
		Paul Servais
Make-up Chairman -	- - - - -	Virgie Abts
Assistant-	- - - - -	Kim Tielens



The above scene is from Luxemburg-Casco's production of "The Merry Wives of Windsor," directed by Lynda Miller. The play received an "A" award at the State Drama Contest.

NEENAH ARMSTRONG
"A"
"Alice in Wonderland"
The Manhattan Project

Director: James Mueller
Student Director: Diane Bruha

STUDENTS:

Doris Alberg, Erin O'Neill, Steve Carpenter, Jan Pennau, Mark Enloe,
Nancy Ryden, Roger Evansen, Darel Schoening, Craig Hathaway, Mary
Stahl, Chris Malchow, Mary Thome

Props - - - - - Juellaine Druckrey
Sandy Atchison
Stephanee Pelotes
Make-up - - - - - Shelley Haldemann
Debbie Schuerer
Sue Amond
Set - - - - - Tom Buck
Jay Hetland
Lights- - - - - Stephanie Miller
Student Technical Director- - - - - Kenneth Olson

TOMAHAWK
"A"
"The Elephant Calf"
Bertolt Brecht

Locale: A Theatre

"Who can't immediately understand the plot needn't fret--it is incomprehensible." So goes the first speech of the "Elephant Calf," an interlude written by Bertolt Brecht. It is meant to be little more than an extravaganza or side show. The actor, Galy Gay, appears as an elephant calf accused of having murdered its mother. Although the mother is proved to be alive and the baby elephant is proved not to be her child, the case against it is found proven. The play is an attempt by Brecht to show the audience that he can prove anything he wants.

Director: Peter Whiteneck
Student Director: Joan Sweeney

Polly Baker - - - - - Julie Wurl
Uriah Shelley - - - - - Bucky Gillett
Jesse Mahoney - - - - - Keri Beudingen

Galy Gay- - - - - Pat Barlow
Soldiers and Their Girls- - - - - Tom O'Malley
Mark Wurl
Cheri Thompson
Joan Renn
The Bartender - - - - - Dave Froemming

UNION GROVE UNION
"A"
"The Brick and the Rose"
Lewis John Carlinio

Locale: An Urban Slum
Time: The Present

The Union High production of "The Brick and the Rose" is a cutting and adaptation of the reader's theatre script. The play is a kaleidoscope drama of a boy's life; it presents the nature of his environment and re-counts his efforts to find something beyond the "...hardness and hitting out..." which that environment provides.

Director: Verne Meyer

Voice- - - - - Pamela Haegerl
Tommy- - - - - Michael Bereiter
First Neighbor, 4th Woman, 2nd Woman, Mother,
Mrs. Donahue, 3rd Woman, Young Woman - - - - - Cynthia Paplaczky
Sandy Donahue, Priest, 3rd Spectator - - - - - William Ashenfelter
Second Man, 3rd Child, Al, 1st Boy, 4th Child,
Policeman- - - - - Patrick LaPointe
Second Neighbor, 1st Woman, Little Girl, Alice - - - Valerie Lipinski
First Child, Tony, 1st Man, Storekeeper, 3rd Man - - - Daryl Drought
Second Child, Gimp, 2nd Boy- - - - - Patrick Handley
Johnny Blue Eyes, 4th Man, Freddy the Fox, Reporter- - Steven Krause
Understudies - - - - - Ann Marie Haas
Steven Chmielewski

Lights - - - - - Dennis Terwilliger
Ann Marie Haas
Sound- - - - - Steven Chmielewski

WHITEFISH BAY
 "A"
 "Once Upon a Mattress"
 Thompson, Barer, Fuller

Locale: A Castle
 Time: Many Moons Ago

The happy musical Once Upon a Mattress retells the old legend of the princess who proves she's really royalty when she's unable to sleep on 20 mattresses because there's a pea underneath the one at the bottom. To the basic fairy tale, this musical adds the highly comic elements of a king who can't talk, a queen who won't stop talking, and an enormously ineffectual wizard.

Permission has been granted by Music International, Inc. to perform Once Upon a Mattress as a dramatic production with free use of all music.

Director: Mercedes Chalmers
 Student Director: Jill Old

Minstrel	- - - - -	Ken Hayden
Puppet Prince	- - - - -	Jim Kestin
Puppet Princess	- - - - -	Helen Flores
Puppet Queen	- - - - -	Sue Ward
Wizard	- - - - -	Mike Mishlove
Princess #12	- - - - -	Jane Zacharias
Queen Aggravain	- - - - -	Judy Ryerson
Prince Dauntless the Drab	- - - - -	Ted Boerner
King Sextimus the Silent	- - - - -	John Willman
Jester	- - - - -	Bob Stone
Sir Tom	- - - - -	John Joseph
Sir Dick	- - - - -	John Winograd
Sir Harry	- - - - -	Jeff Gendelman
Lady Rowena	- - - - -	Darelle Bisquerra
Lady Merrill	- - - - -	Mary Beth Holm
Lady Larkin	- - - - -	Renee Zwald
Princess Winifred	- - - - -	Peggy Franke
Sir Gene	- - - - -	David Glenn
Lady Kelly & Nightingale of Samarkand	- - - - -	Elaine Weiss

LITTLE CHILDREN

Barb Graff, Liz Hahn, Becky Heinselman, Beth Hern, Judy Kryshak, Megan Pandl, Ann Piekenbrock, Amy Sheyer, Betsy Stern, Mari Wilson, Laurie Sebanz

ROYAL GRIPS

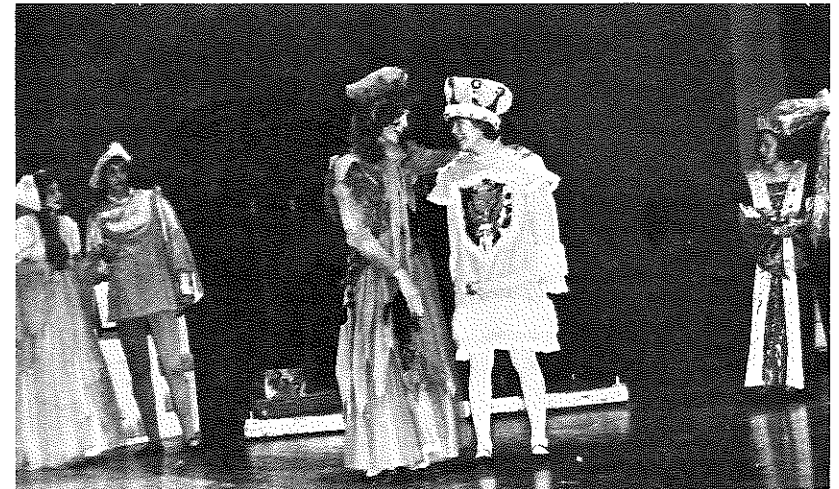
Jon Cavan, Lisa Corcoran, Ellen Dachauer, Julie Hungtinton, Anne Kemmet, Bill Matchette, Phil Mixter, Judy Neal, Steve Peck, Mike Salomon

Set Design	- - - - -	Ted Boerner
Costume Design	- - - - -	Judy Neal
Make-up Design	- - - - -	Peggy Laing
Props Design	- - - - -	David Glenn
Props Crew Chief	- - - - -	Francee Silver
Hairstyling Design	- - - - -	Claire Rabion
Lighting & Sound	- - - - -	Mike Kelly
		Jill Old
		Mark Tank
Special Effects	- - - - -	John Willman

COSTUME, HAIR STYLING, MAKE-UP, PROPS, & SCENERY:

Sari Berlin, Sue Bresee, Karen Burns, Eileen Cocoran, Barrie Dolnick, Terri Dunn, Sharon Glicksman, Mary Beth Hinkes, Sue Johnson, Kathy Kessenich, Mary Kortsbein, Cindy McAlteer, Linda Osterman, Patti Quentel, Jon Rindfleisch, Jean Ring, Vicki Schmitz

Stage Manager	- - - - -	Mike Salomon
Choreographers	- - - - -	Ted Boerner
		Elaine Weiss
Mime Director	- - - - -	Ted Boerner
Technical Director	- - - - -	Frank Laycock
Student Director	- - - - -	Jill Old



Above is a scene from Whitefish Bay's production of "Once Upon a Mattress" directed by Mercedes Chalmers. Pictured from left to right are Mary Beth Holm, John Winograd, Peg Franke, Ted Boerner, and Judy Ryerson. The play received an "A" award at the State Drama Contest.

WHITEWATER
 "A"
 "The Fantasticks"
 Harvey L. Schmidt/Tom Jones

Locale: In the Moonlight
 Time: Then

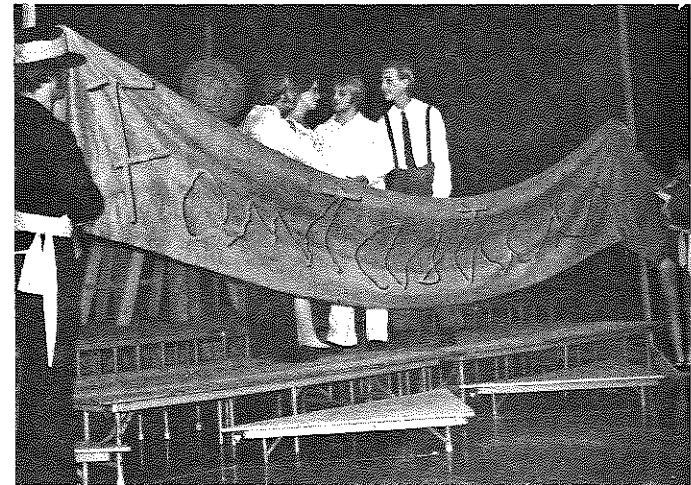
The Fantasticks-Act I is the story of the young love between Matt and Luisa, "aided" (or hindered, depending on the point of view) by their meddling fathers. Hucklebee and Bellomy build a wall and pretend to feud, hoping the deception will bring their "fantasticks" closer. They must seek a way to end the feud without losing face--calling upon the help of El Gallo, Henry, Mortimer, and the ever-present Mute for a spectacular ending.

Director: Virginia Newcomb
 Student Director: Barbara Wilson

Mute -	- - - - -	Jean Reinbold
El Gallo -	- - - - -	John Tuinstra
Luisa -	- - - - -	April Scharine
Matt -	- - - - -	Mike Davison
Hucklebee -	- - - - -	Jim Olm
Bellomy -	- - - - -	Brand Carter
Mortimer -	- - - - -	Jay McCallum
Henry -	- - - - -	Steve Kruchoski

Orchestra	
Piano -	- - - - - Bobbi Rhodes
Electric Piano -	- - - - - Jill Watrous
Bass -	- - - - - Frank Parks
Drums -	- - - - - Scot Poehler

Assistant Director -	- - - - - Dave Kruchoski
Stage Manager -	- - - - - Holly Humphrey
Lighting -	- - - - - Fritz Thomas
Make-up -	- - - - - Erin Findlay, Lori Stewart, Kathy Bruch, Jodie Schirmer, Barb Schreier



The above scene is from Whitewater's production of "The Fantasticks," directed by Virginia Newcomb. The play received an "A" award at the State Drama Contest.



The above picture is of the students of Winneconne who portrayed characters in "Interview." The play, directed by Catherine Mulqueen, received an "A" award at the State Drama Contest. Top row (left to right), Sue Petermann, Ed Clasen, Tammi Heath, Randy Behringer, Nancy Macek, Ann Nimmer. Bottom row (left to right) Dave Arndt, Carol Markert, Dennis Lee, Rose Buech.

WINNECONNE
"A"
"Interview"
Jean Claude VanItallie

Locale: Everywhere
Time: Past, Present, Future

Interview is concerned with man's growing inability to communicate with his fellow man. This gap in communication produces feelings of alienation between all of us. These themes, compounded with every day problems we all face, portray humans searching for meaning and dignity in their lives.

Director: Catherine Mulqueen
Student Director: Jane Eid

ALL CHARACTERS ASSUME MANY ROLES:

Randy Behringer, Ed Clasen, Carol Markert, Dennis Lee, Ann Nimmer,
David Arndt, Suzanne Petermann, Rose Buech, Nancy Macek, Tammi Heath

Shift - - - - - Jane Kocourek
Faye Burg
Lights- - - - - Nancy Opperman
Stage Manager - - - - - Jane Eid

ALGOMA
"B"
"Spoon River Anthology"
Edgar Lee Masters
Adapted by Charles Aidman

Locale: Petersburg and Lewistown, Illinois
Time: Late 19th Century

"Spoon River Anthology" contains two hundred and forty-four miniature, unsentimentalized autobiographies of the thwarted souls, drunkards, skinflints, secret saints and private leechers, dreamers and idealists Edgar Lee Masters had known in his boyhood towns of Petersburg and Lewistown, Illinois on the Spoon River.

Charles Aidman took the poetry of Masters and after several months of work developed a theatrical version of Spoon River Anthology at the UCLA Theatre, which subsequently was taken to the Booth Theatre on Broadway where it met with great success. Our production is but a small segment of the Aidman

adaptation in which we hope to remind you of the meanness, hypocrisy, and idealism which existed in Spoon River and still prevails in American society today.

Director: David Loos
Student Director: Heidi Harmann

Singers- - - - - Sue Gorz
Dale Eggert
The Hill - - - - - Pat Phillips
Roscoe Purkapile - - - - - Denis Schinderle
Mrs. Purkapile - - - - - Sue Seidl
Barney Hainsfeather- - - - - John Curtin
Mrs. Charles Bliss - - - - - Kim Krautkramer
William and Emily- - - - - Mick Schwedler
Amy Zimmerman
Benjamin Pantier - - - - - Pat Thielke
Mrs. Pantier - - - - - Carrie Haegele
Willie Metcalf - - - - - Bill Pevlor
Margaret Fuller Slack- - - - - Sue Annoye
Lucinda Matlock- - - - - Kim Krautkramer
Mabel Osborne- - - - - Sue Seidl
Eugene Carmen- - - - - John Curtin
Village Athiest- - - - - Pat Phillips
Knowlt Hoheimer- - - - - Jake Blazkovec
Lydia Puckett- - - - - Sheri Byce
Anne Rutledge- - - - - Tricia Evans
Indignation Jones- - - - - John Curtin
Minerva Jones- - - - - Kathy Dequaine
Doc Meyers - - - - - Paul Rodrian
Mrs. Meyers- - - - - Amy Zimmerman
Faith Matheny- - - - - Bonnie Cmejla
Epilogue - - - - - Pat Phillips
Hod Put- - - - - Bill Pevlor

Prompters- - - - - Joan Blaha
Peggy Dier
Set Design - - - - - Sue Seidl
Make-up Chairman - - - - - Susie Vlies
Stage Crew Chairman- - - - - Mike Zastrow
Lighting - - - - - Rock Zimmerman
Kraig Michaletz
Stage Crew - - - Lee Koehler, Lee Feuerstin, Mike Knipfer, Dan Zeman,
Ken Hoffmann, Tom Dier, Ed Rutledge, Steve Hill, Frank DeVillers
Make-up Staff- - - - - Peggy Curtin, Mary Steeber, Brenda Barnes,
Melanie Martin, Luann Harmann, Terry Meyer,
Amy Groessl, Kelli Dettman, Cindy Qualman,
Pam Harmann, Barb Vandermeuse, Jodie Detjen

AUGUSTA
"B"

"The Diary of Adam and Eve"
Adapted by Mark Bucci

Locale: Garden of Eden
Time: Creation

The original experiment, mankind, is the subject of much humor in Mark Twain's short story, "The Diary of Adam and Eve," adapted for the stage by Mark Bucci. The traditional roles of male and female are played with inimitable tongue-in-check fashion. Even the snake's personality turns out to be irresistible, especially to Eve. With the knowledge of good and evil comes a new kind of happiness and more apple pie.

Director: Mary Palm

Adam - - - - - Terry Drehmel
Eve - - - - - Susan Silvernail
Snake - - - - - Cindy Harden

Stage Manager - - - - - Lisa Fouts

BROWN DEER
"B"

"The Diary of Adam and Eve"
Mark Twain
Adapted by Mark Bucci

Locale: Garden of Eden
Time: In the Beginning

Mark Twain gives us a refreshing new version of Adam and Eve's life in the Garden of Eden.

Director: Ellen Imbruglia
Student Director: Jackie Maynard

Adam - - - - - Pat Haizel
Eve - - - - - Kathy Mader
Snake - - - - - Julie Kroeger

Stage Crew - - - - - Chip Quade
Kathy Magestro

CADOTT
"B"

"Mary of Scotland"
Maxwell Anderson

Locale: A Dungeon in Queen Elizabeth's Castle
Time: Latter 16th Century

"Mary of Scotland" dramatizes the conflict between England's Queen Elizabeth and Mary Stuart of Scotland during the latter part of the 16th Century. Elizabeth fears Mary's popularity and Catholic heritage. Believing her own throne will be threatened in the near future, Elizabeth plots Mary's downfall. Her schemes are many. She plots and plants malicious rumors amongst Mary's followers to destroy her reputation. She sets her up to marry Darnley, a drunkard and a fool. She links her up with infidelity and murder.

All of Elizabeth's schemes succeed to the point that she is finally able to bring Mary to England and imprison her. The scene begins with Mary in an English dungeon, soon to be visited by Elizabeth. Elizabeth's purpose in coming is to have Mary sign a statement whereby she forever relinquishes her throne.

Director: John Butterbrodt

Queen Mary - - - - - Cheryl Sedlacek
Queen Elizabeth - - - - - Karen Sonnentag

Stage Manager - - - - - Dianne Schwetz

EVANSVILLE
"B"

"Owl"
Cleve Haubold

Locale: Anywhere
Time: Anytime

Director: J. Peter Shaw

Miss Dross - - - - - Lori Elmer
Benjamin Franklin - - - - - Al Bosshart
Dr. Hollyhock - - - - - Chris Brown

Production Staff - - - - - Linda Milbrant
John Jordan
Susan Lien
Sue Wegman
Peter Hall

GREEN BAY PREBLE

"B"
"Chamber Music"
Arthur Kopit

Locale: A Meeting Place

Eight women who are representatives of all the ladies in a mental hospital have a meeting. The business at hand is how to counterattack the homicidal feelings aroused by the men's ward. The women decide to attack the men's ward before they are attacked by the men. The women intend to use the weapon of cannibalism and when this plan's fallacies are exposed, they sacrifice a woman as a warning.

Directors: Mary Ann De Salva and Margaret Muehl
Student Director: Mary Zeise

Woman who plays records - - - - - Morag Hornsby
Woman in safari outfit - - - - - Julie Humke
Woman with notebook - - - - - Jill Schahezenski
Girl in gossamer dress - - - - - Laurie Lueck
Woman in aviatrix's outfit - - - - - Lori Ott
Woman in queenly Spanish garb - - - - - Mary Pappas
Woman in armor - - - - - Cherie Ziemer
Woman with gavel - - - - - Jackie Baker
Man in white - - - - - John Hawley
His assistant - - - - - Gerry Ausloos

Stage Manager - - - - - Kathy Presnell
Stage Crew - - - - - Brenda Naze
Julie Ritchie
Make-up - - - - - Carol Le Mieux, Sue Brunette, Natalie De Bauche,
Jodi Parins, B. J. Prichard
Lighting - - - - - Steve Netols

LAKE GENEVA BADGER

"B"
"The Apple Tree"
Sheldon Harnick & Jerry Bock

Locale: The Garden of Eden

Director: Gary Blaisdell

Adam - - - - - Richard Ganoung
Eve - - - - - Katie Huber
Voice - - - - - David Rush

Stage Crew - - - - - Richard Lathrop
JoAnne Franzene
Mare Meister

MAPLE NORTHWESTERN

"B"
"Pride and Prejudice"
Jane Austen

Locale: The Garden of the Bennet Home in England
Time: Early 1800's

Directors: Pat Luostari and Jo Stewart
Student Director: Anne Williams

Mr. Bennet - - - - - Greg Leaf
Mrs. Bennet - - - - - Sandy Simons
Jane Bennet - - - - - Becky Simons
Elizabeth Bennet - - - - - Mary Provost
Mary Bennet - - - - - Patti Holden
Catherine Bennet - - - - - Cheryl Staurseth
Lydia Bennet - - - - - Mary Wester
Mr. Bingley - - - - - Bill Philby
Mr. Darcy - - - - - Jon Kesley
Hill - - - - - Myrna Aho
The Reverend Collins - - - - - Jeff Mitchell

Stage Manager - - - - - Yvonne Lindgren
Costumes - - - - - Teresa Pearson
Donna Denny
Bonnie Anderson

Set Construction - - - - - Jeff James
Bill Westergren
Barbara Johnson
Fred Williams
Dale Smith

Music - - - - - Kim Heytens
Make-up - - - - - Joe Sleeman, Joan Fechtelkotter, Janis Denny,
Nancy Neese, Jeanette Hoffman, Julie Provost,
Gail Peterson, Anne Johnson, Karen Moreland,
Kris Williams

MENOMONIE SR

"B"
"Taming of the Shrew"
Act II, Scene I
William Shakespeare

Locale: Padua, Italy
Time: Renaissance

Act II, Scene I, of Shakespeare's Taming of the Shrew is the familiar scene in which Katherine encounters Petruchio for the first time. Our cutting has eliminated the minor characters, and so in addition to the two principals only Bianca and Baptista will appear.

Costumes - - - - - Glynnis Lessing
- - - - - Leila Heise
Suzanne Milavitz

[illegible]

Make-up - - - - - Hilde Berger
Mary McKenzie
Ann Crawford

PORT WASHINGTON
"B"
"Pullman Car Hiawatha"
Thornton Wilder

Time: December, 1931

In Pullman Car Hiawatha, we see a play which parallels Our Town in a number of ways. Thornton Wilder has exhibited his typical themes on death and the insignificance of man by recording the death of a passenger on the pullman car Hiawatha.

Director: Ralph Lohse

Stage Manager-	- - - - -	Mark Angelos
Porter - - - - -	- - - - -	Mike Strahan
Insane Woman - - - - -	- - - - -	- Amy Bley
Nurse- - - - -	- - - - -	-Therese Pujaanauski
Phillip- - - - -	- - - - -	-Robert Noll
Harriet- - - - -	- - - - -	- Peggy Krains
Maiden Lady- - - - -	- - - - -	- Susan LaCrosse
Engineer - - - - -	- - - - -	-Terry Nierode
Engineer - - - - -	- - - - -	-Randy Bichler
Doctor - - - - -	- - - - -	-David Strehlow
Grovers Corners- - - - -	- - - - -	- Chuck Mackin
The Field- - - - -	- - - - -	-Kathy Schwans
Parkersburg- - - - -	- - - - -	-Mary Galleske
Parkersburg's Children - - - - -	- - - - -	-Mary Sue Heiser
		Tierney Galleske
The Tramp- - - - -	- - - - -	- Paul Mayer
Worker - - - - -	- - - - -	-Robert Federspiel

THE HOURS

Michelle Ehrlich, Wendy Stockero, Lynn Pierringer, Cheryl Graff, Charmain Douville, Sandi Husting, Cheryl Wilgren, Sylvia Hoerig, LouAnn Altenbach, Sue Clements, Lauri Haupt, Linda Mitchell

THE PLANETS

Amy Heiser, Pam Kauth, Kathy Kettenhoven, Janet Gunderman, Cheri Gasser, Judy Schuknecht, Beth Daniels, Kim Karrels, Lynn Hunsicker

Two Angels - - - - -	- - - - -	Chris Mans
		Teri Baumann
Cleaning Ladies- - - - -	- - - - -	Irene Seideh
		Dawn Pride

Crew - - - - - -Mike Michawls, Brian Barsch, Nancy Hallada, Jodi Weiss, Kimberly Kunz

PORT WING SOUTH SHORE
"B"
"I Remember Mama"
(Selected Scenes)
John van Druten

Locale: San Francisco, California
Time: Around 1910

The action of the play centers around a family of Norwegian immigrants in San Francisco who have to economize in order to make ends meet. Before the curtain opens, Katrin, who is now a successful author, begins reading from her newly published book. She also narrates between scenes thus revealing the characteristics of the various members of her family; but first and foremost, the play is about Mama.

Director: Anita Helske
Student Director: Cassie Fleming

Katrin - - - - -	- - - - -	-Karen Fleming
Mama - - - - -	- - - - -	-Cassie Fleming
Papa - - - - -	- - - - -	- Jim Jodarski
Nels - - - - -	- - - - -	-Randy Beeksma
Christine- - - - -	- - - - -	-Robin Bruneau
Aunt Trina - - - - -	- - - - -	-Valery Beckman
Aunt Sigrid- - - - -	- - - - -	-Connie Hoefling
Aunt Jenny - - - - -	- - - - -	-Cindy Celinsky
Uncle Chris- - - - -	- - - - -	-Vince Molberg
Peter Thorkleson - - - - -	- - - - -	-Jeff Fehrmann
Nurse- - - - -	- - - - -	-Denise Allison

Stage Manager and Lights - - - - -	- - - - -	-Thomas Ross
Costumes, Make-up, Etc.- - - - -	- - - - -	-The Whole Cast

RICHLAND CENTER
"B"
"The Trysting Place"
Booth Tarkington

Locale: Resort Hotel
Time: Late Twenties

The trysting place of the title refers to a small area off the main lobby of a small resort hotel. The action takes place on an afternoon sometime in the late twenties.

Four couples simultaneously have a meeting or a lover's tryst in the same hotel lobby. Things get somewhat frantic when the couples keep walking in on one another at awkward moments.

Director: Ken Beatty and Greg Hanke

Mrs. Curtis - - - - - Julie Houck
 Lancelot Briggs - - - - - Tim Burns
 Mr. Ingoldsby - - - - - Jeff Rubish
 Jesse Briggs - - - - - Cindy McCarthy
 Mrs. Briggs - - - - - Jane Cooper
 Rupert Smith - - - - - Kerry Shannon
 Mysterious Voice - - - - - Eric Rentz

Stage Manager - - - - - Steve Ewing
 Make-up - - - - - Annetta Miller

SEYMOUR

"B"

"The Lesson"

Eugene Ionesco

Locale: A Professor's Office
 Time: The Present (Anytime Really)

Eugene Ionesco has found much to comment on and to criticize in human society. His play, "The Lesson," peaks in on ... a learning situation? The relationship between an energetic pupil and a wish-washy professor? The building up and then the breaking of all thirst for knowledge? What is going on in the play? What is "The Lesson"? You decide.

Director: Charlotte Boscamp

Professor - - - - - Tim Melchert
 Pupil - - - - - Debbie Hackel
 Maid - - - - - Julie Hein

SHULLSBURG

"B"

"Beginnings"

Patty Gideon Sloan

Locale: There
 Time: Then

Shullsburg's production is a cutting from the first act of the two-act Patty Gideon Sloan comedy, BEGINNINGS. The use of every day language in an unusual situation appears in this variation of the story of the creation.

Director: Jerry Reusch
 Student Director: Paul Binns

Willy Nilly - - - - - Steve Engels
 Al - - - - - David Lawrence
 Meg - - - - - Julie Lawrence
 Voice - - - - - Tom Black

Stage Manager - - - - - Paul Binns
 Stage Crew, Lighting - - - - - Tom Black, Tim Black, Kate Stocker,
 Criss Davis, David Webster, Sue Kaempfer,
 Brian Tuescher

Make-up - - - - - Peggy Herbst, Karen Lacke, Kathy Meier

WESTBY

"B"

"The Love Life of Herbert Packenstacker"

James O. Noble

Locale: Park
 Time: 1910

Director: Roger Harris
 Student Director: Lynn Dahlen

Herbert Packenstacker - - - - - Peter Appleman
 Mazie Applegate - - - - - Sylvia Sather
 Pierre - - - - - Jeff Pederson
 Waitress - - - - - Ann Aarness

Make-up - - - - - Rhonda Nestingen, Gayle Berg,
 Kim Rudie, Lynn Larson

Lighting - - - - - Tom Raitzer
 Props - - - - - Lynn Dahlen

WEST SALEM

"B"

"Blithe Spirit"

Noel Coward

Locale: English Country Home
 Time: Modern

"There are more things in Heaven and Earth than are dreamt of in your philosophy." This must have been the premise upon which Noel Coward based this delightful farce. The West Salem Players take pleasure in presenting for you this modern "ghost" story.

Director: Joan Solie

Edith - - - - -	- Kris Byers
Ruth - - - - -	- Sue Molitor
Charles - - - - -	- Tim Whitlock
Dr. Bradman - - - - -	- Carl Schmidt
Mrs. Bradman - - - - -	- Teresa Hass
Madam Arcati - - - - -	- Jennifer Balmer
Elvira - - - - -	- Janine Martin

Technical Director - - - - -	- Matt Lusk
Stage Crew - - - - -	- Brad Munson

Bruce Schwier
Mitch Olson

Properties - - - - -	- Mary Ender
	- Paula Ender

Costumes - - - - -	- Karen Black
	- Kris Byers

DRAMA: Sectional Contests

Northern Section at UW-Eau Claire

Augusta - - - - - A	Amery - - - - - B
Cadott - - - - - A	Drummond - - - - - B
Chippewa Falls SR - - - - - A	Loyal - - - - - B
Maple Northwestern - - - - - A	Minocqua Lakeland - - - - - B
Menomonie SR - - - - - A	Park Falls - - - - - B
Osceola - - - - - A	River Falls - - - - - B
Port Wing South Shore - - - - - A	Somerset - - - - - B

Central Section at UW-La Crosse and St Norbert College

Algoma - - - - - A	Green Bay Southwest - - - - - B
Green Bay Preble - - - - - A	La Farge - - - - - B
Luxemburg-Casco - - - - - A	Manitowoc Lincoln - - - - - B
Neenah Armstrong Campus - - - - - A	Mosinee - - - - - B
New Lisbon - - - - - A	Oconto Falls - - - - - B
Oshkosh Lourdes Academy - - - - - A	Onalaska - - - - - B
Richland Center - - - - - A	Oneida Sacred Heart - - - - - B
Seymour - - - - - A	Pembine - - - - - B
Tomahawk - - - - - A	Plymouth - - - - - B
Westby - - - - - A	Sturgeon Bay Sevastopol - - - - - B
West Salem - - - - - A	Suring - - - - - B
Winneconne - - - - - A	Washington Island - - - - - B
De Pere East - - - - - B	Wittenberg-Birnamwood - - - - - B
	Niagara - - - - - C

Southern Section at Lake Geneva Badger

Brookfield Central - - - - - A	Whitefish Bay - - - - - A
Brown Deer - - - - - A	Whitewater - - - - - A
Evansville - - - - - A	Clinton - - - - - B
Greenfield - - - - - A	Greendale - - - - - B
Lake Geneva Badger - - - - - A	Mc Farland - - - - - B
Port Washington - - - - - A	New Berlin Eisenhower - - - - - B
Shullsburg - - - - - A	Orfordville - - - - - B
Union Grove Union - - - - - A	Platteville - - - - - B

DRAMA: District Contests

Eau Claire District at Loyal

Augusta - - - - - A	Menomonie SR - - - - - A
Cadott - - - - - A	Cornell - - - - - B
Chippewa Falls SR - - - - - A	Greenwood - - - - - B
Loyal - - - - - A	Osseo-Fairchild - - - - - B

Green Bay District at De Pere

Algoma - - - - - A	Seymour - - - - - A
De Pere East - - - - - A	Sturgeon Bay Sevastopol - - - - - A
Green Bay Preble - - - - - A	Suring - - - - - A
Green Bay Southwest - - - - - A	Washington Island - - - - - A
Luxemburg-Casco - - - - - A	Crivitz - - - - - B
Niagara - - - - - A	Fish Creek Gibraltar - - - - - B
Oconto Falls - - - - - A	Green Bay East - - - - - B
Oneida - - - - - A	Kewaunee - - - - - B
Pembine - - - - - A	

Kenosha District at New Berlin Eisenhower

Greendale - - - - - A	Union Grove Union - - - - - A
Greenfield - - - - - A	Greenfield Whitnall - - - - - B
Milwaukee Hamilton - - - - - A	Mukwonago - - - - - B
New Berlin Eisenhower - - - - - A	West Allis Nathan Hale - - - - - B

La Crosse District at UW-La Crosse

La Farge - - - - - A	Cashton - - - - - B
New Lisbon - - - - - A	Cochrane-Fountain City - - - - - B
Onalaska - - - - - A	Elroy Royall - - - - - B
Richland Center - - - - - A	La Crosse Aquinas - - - - - B
Westby - - - - - A	La Crosse Central - - - - - B
West Salem - - - - - A	Sparta - - - - - B

Milwaukee District at Port Washington

Brookfield Central- - - - - A	Brookfield East- - - - - B
Brown Deer- - - - - A	Hartford Union- - - - - B
Port Washington - - - - - A	Hartland Arrowhead - - - - B
Whitefish Bay - - - - - A	Milwaukee James Madison- - - B
	Pewaukee - - - - - B

Oshkosh District at UW-Sheboygan

Manitowoc Lincoln - - - - - A	Elkhart Lake - - - - - B
Neenah Armstrong Campus - - - A	Omro - - - - - B
Oshkosh Lourdes Academy - - - A	Ripon - - - - - B
Plymouth- - - - - A	Theisen JR - - - - - B
Winneconne- - - - - A	

Platteville District at UW-Platteville

Orfordville - - - - - A	Cassville- - - - - B
Platteville - - - - - A	New Glarus - - - - - B
Shullsburg- - - - - A	Reedsburg Webb - - - - - B

River Falls District at UW-River Falls

Amery - - - - - A	Somerset - - - - - A
Osceola - - - - - A	Spring Valley- - - - - B
River Falls - - - - - A	

Stevens Point District at Wittenberg-Birnamwood

Mosinee - - - - - A	Antigo - - - - - C
Tomahawk- - - - - A	Edgar- - - - - C
Wittenberg-Birnamwood - - - A	Marathon - - - - - C
Weyauwega - - - - - B	Wabeno - - - - - C

Superior District at UW-Superior

Drummond- - - - - A	Port Wing South Shore- - - - A
Maple Northwestern- - - - - A	Mellen - - - - - B
Minocqua Lakeland - - - - - A	Superior - - - - - B
Park Falls- - - - - A	

Whitewater District at UW-Whitewater

Clinton - - - - - A	Cambria-Friesland- - - - - B
Evansville- - - - - A	Janesville Parker- - - - - B
Lake Geneva Badger- - - - - A	Lodi - - - - - B
Mc Farland- - - - - A	Sun Prairie- - - - - B
Whitewater- - - - - A	Waunakee - - - - - B
Beloit Turner - - - - - B	

DRAMA: Summary of Participation, 1974-75

Eau Claire District
(44 Member Schools)

	Local	Sub-District	District	Sectional	State
Schools	12	12	8	5	4
Students	199	114	79	44	30
			Ratings	Ratings	Ratings
			5A	4A	1A
			3B	1B	3B

Green Bay District
(52 Member Schools)

	Local	Sub-District	District	Sectional	State
Schools	35	25	17	13	4
Students	603	337	234	178	100
			Ratings	Ratings	Ratings
			13A	4A	1A
			4B	8B	3B
				1C	

Kenosha District
(41 Member Schools)

	Local	Sub-District	District	Sectional	State
Schools	20	17	8	5	2
Students	300	213	100	63	33
			Ratings	Ratings	Ratings
			5A	2A	2A
			3B	2B	
				1 no show	

La Crosse District
(37 Member Schools)

	Local	Sub-District	District	Sectional	State
Schools	17	15	12	6	4
Students	228	129	107	49	41
			Ratings	Ratings	Ratings
			6A	4A	4B
			6B	2B	

Milwaukee District
(46 Member Schools)

	Local	Sub-District	District	Sectional	State
Schools	24	24	10	4	4
Students	531	531	320	128	128
			Ratings	Ratings	Ratings
			4A	4A	2A
			5B		2B
				1 no show	

Oshkosh District
(51 Member Schools)

	<u>Local</u>	<u>Sub-District</u>	<u>District</u>	<u>Sectional</u>	<u>State</u>
Schools	19	19	9	5	3
Students	286	259	108	90	59
			<u>Ratings</u>	<u>Ratings</u>	<u>Ratings</u>
			5A	3A	2A
			4B	2B	1B

Platteville District
(39 Member Schools)

	<u>Local</u>	<u>Sub-District</u>	<u>District</u>	<u>Sectional</u>	<u>State</u>
Schools	16	13	6	3	1
Students	240	163	78	32	14
			<u>Ratings</u>	<u>Ratings</u>	<u>Ratings</u>
			3A	1A	1B
			3B	2B	

River Falls District
(29 Member Schools)

	<u>Local</u>	<u>Sub-District</u>	<u>District</u>	<u>Sectional</u>	<u>State</u>
Schools	8	8	5	4	1
Students	88	88	50	45	12
			<u>Ratings</u>	<u>Ratings</u>	<u>Ratings</u>
			4A	1A	1B
			1B	3B	

Stevens Point District
(53 Member Schools)

	<u>Local</u>	<u>Sub-District</u>	<u>District</u>	<u>Sectional</u>	<u>State</u>
Schools	17	16	8	3	1
Students	160	153	87	25	10
			<u>Ratings</u>	<u>Ratings</u>	<u>Ratings</u>
			3A	1A	1A
			1B	2B	
			4C		

Superior District
(24 Member Schools)

	<u>Local</u>	<u>Sub-District</u>	<u>District</u>	<u>Sectional</u>	<u>State</u>
Schools	13	13	7	5	2
Students	200	200	106	63	44
			<u>Ratings</u>	<u>Ratings</u>	<u>Ratings</u>
			5A	2A	2B
			2B	3B	

Whitewater District
(53 Member Schools)

	<u>Local</u>	<u>Sub-District</u>	<u>District</u>	<u>Sectional</u>	<u>State</u>
Schools	26	18	11	5	3
Students	390	256	151	74	35
			<u>Ratings</u>	<u>Ratings</u>	<u>Ratings</u>
			5A	3A	1A
			6B	2B	2B

Totals - - - - - 469 Member Schools

	<u>Local</u>	<u>Sub-District</u>	<u>District</u>	<u>Sectional</u>	<u>State</u>
Schools	207	180	101	58	29
Students	3,225	2,443	1,420	791	506
			<u>Ratings</u>	<u>Ratings</u>	<u>Ratings</u>
			58A	29A	10A
			38B	27B	19B
			4C	1C	
			1 no show	1 no show	

* * * * SPECIAL NOTICE * * * *

Due to an error in the September, 1974, Newsletter, Marie Oberle of Thorp High School was not listed as an 'A' winner in Oratory at last year's State Speech Contest. We regret the oversight and are pleased to take this opportunity to provide Marie with the acknowledgement which is due her.

PART IV: CALENDAR INFORMATION

January

- 11 Forensic Workshop, University of Wisconsin-Platteville. Contact Larry E. Larmer, WHSFA.
- 18 Forensic Workshop, University of Wisconsin Center-Barron County. Contact Larry E. Larmer, WHSFA.
- 18 Invitational Debate, University of Wisconsin-Eau Claire.

February

- 8 Forensic Tournament, Waterloo High School.
- 15 Interpreters Theater Festival, University of Wisconsin-Eau Claire. Contact Larry E. Larmer, WHSFA.
- 15 CANCELLED. Forensic Festival, Sun Prairie High School.

March

- 1 Forensics Tournament, Ripon College.
- 22 WFCFA Coaches Tournament, James Madison High School, Milwaukee.

PART V: PROFESSIONAL INTEREST

"Selection of Debate Topics"

R. M. Duesterbeck
Durand High School

"How can any intelligent person select this topic to debate for an entire year?"

During my years of coaching, I have heard comments such as this almost every year. In our state, there seems to be a great deal of criticism of the topics that our students debate. This paper attempts to deal with that subject by informing you, the debate coach, of how the question is selected. In so doing maybe we can gain a new insight into the topics that are debated.

In the month of December a meeting is conducted to which each state is invited to send a representative. The purpose of this meeting is to select three problem areas from which the debate topic for the next year will eventually emerge. It has been my pleasure to represent the State of Wisconsin at two of these national meetings and to participate in the selection process. This report deals in part with my experiences at these conventions.

The first day of the meeting consisted of a number of preliminary reports on a variety of subjects that individuals throughout the country thought would make good debate topics. These reports were in the form of background papers on subject areas. They dealt with the availability of material, whether the author thought the problem would have national interest, whether it possessed regional difficulties, and if the problem area could be comprehended and handled by high school students, etc. My personal opinion was that a great deal of work went into these preliminary reports; in most cases the authors had been working on them for a year or more. At the conclusion of these reports, six of them were selected for further investigation by the delegates in attendance.

The second phase of selection was then put into motion. These six reports then went to the Wording Committee, which conducted open hearings on them for any delegates who desired to attend. During the hearing the Committee carefully went over the wording of the debate and discussion resolutions that the authors had submitted. Changes in wording were made in an attempt to clarify the resolutions and to make them as clear and precise as possible.

In the next session the Wording Committee reported back to the convention with their findings and recommendations. Following this the convention voted on the six problem areas. From this balloting three areas were selected. These were the three that were to be submitted to the various states. At this time I thought that the work had been completed, but I was mistaken.

After a break the session resumed, and then all of the delegates had the opportunity to question the problem areas as they were presented for final discussion. I was amazed at the depth to which these areas were questioned. Each word had to pass the test, not only of definition of usage, but also of regionalism as well. Of prime concern was the importance that the resolutions would not have various interpretations in different parts of the country.

Finally, the discussions were completed; and the three problem areas were accepted by the convention delegates, each with its own three discussion questions and three debate resolutions.

The convention, which I attended, is only the first step in deciding what will be the debate resolution for the State of Wisconsin. The three problem areas selected in national convention are then mailed out to the various states, who in turn prepare a ballot which is then mailed to all participating schools within that state. The results of each state are then sent to the National Office, which tabulates them and then notifies each of the states as to what the national problem area will be. This is the second step in the selection process.

In the spring, each of the states conducts its ballot on the national problem area. Each school receives the ballot, which contains the three discussion questions and the three debate resolutions. The voting process is conducted, and the State Office tabulates the results. A copy of the results is then sent to the National Office where it is tabulated along with other state results. However, the tabulation of the National Office has no effect on the debate resolution for the State of Wisconsin.

At the present time the debate resolution that we have in the state is a result of balloting within the state and is not influenced by what other states do. This may be good or bad, depending upon who you are and where you are located within the state. This year, for example, surrounding states have a different resolution than we do; therefore, out-of-state debating is rather difficult.

There are two areas of thought that should be considered. First, there are those who believe that we should decide what it is that we want to debate and then debate it for the season. We should not be influenced by what they are doing in other states, and this is a legitimate position to take. The second area of thought states that we should be debating the national high school question regardless of what we vote for in the state. These people would say that, if we vote other than the national topic, we should throw away our ballot and move to the national resolution. And there are several reasons that one could list for taking this position.

The purpose of this paper is two-fold: first, to inform you of how the resolution is selected, and second, to elicit from you a response as to what you think about the selection process. This is not the first year that Wisconsin has not debated the national high school topic. And under the present system of selection, it probably will not be the last. The State Office would like to hear from you regarding your impressions on the manner of selecting the topic for the State of Wisconsin and any suggestions that you might have regarding methods of change. If you are content with the present system of selection; let us know; and if you desire change, let us know that also. Debate in this state will only be as strong as you are willing to make it.