

# Wisconsin High School Forensic Association Newsletter

*De  
Smiley's*

Vol. XLVI

Madison, Wisconsin, Spring 1975

No. 3



WISCONSIN HIGH SCHOOL FORENSIC ASSOCIATION

LOWELL HALL, 610 LANGDON STREET

MADISON, WISCONSIN 53706

affiliated with

UNIVERSITY OF WISCONSIN - EXTENSION

# CALENDAR FOR 1975-76

## DATES FOR CONTESTS

Drama (1975)      Debate (1976)      Speech (1976)

Subdistrict . . . \*Nov 1 . . . \*Mar 13  
 District . . . Nov 15 . . . Jan 31 . . . Mar 27  
 Section . . . Nov 22 . . .  
 State . . . Dec 5-6 . . . Feb 13-14 . . . Apr 24  
 \*Latest dates for subdistrict contests; all others are firm.  
     WIAA State Basketball Finals      Mar 20, 1976  
     Easter      Apr 18, 1976  
 Board of Control Meeting      Nov 4-5, 1975

## BOARD OF CONTROL

Northern Section R. M. Duesterbeck Durand High 604 7th Avenue East Durand 54736 (715) 672-8917	Central Section Fern Stefoniak Rhineland SR High Coolidge Avenue Rhineland 54501 (715) 362-6955	Southern Section William Hintz Lake Geneva Badger High South Street Lake Geneva 53147 (414) 248-6243
Eau Claire District Bernard H. Bennett Cornell High 205 South 7th Street Cornell 54732 (715) 239-6464	Green Bay District William O'Brien Pulaski High 132 Front Street Pulaski 54162 (414) 822-3283	Kenosha District James Highland Union Grove Public Schools Box 36, Highway 45 Union Grove 53182 (414) 878-2434
River Falls District Wayne T. Gustafson Osceola High 404 Chieftain Osceola 54020 (715) 294-2127	La Crosse District Edwin Sievers Viroqua High Blackhawk Drive Viroqua 54665 (608) 637-3191	Milwaukee District Raymond Behnke Cedarburg High 1539 N Evergreen Drive Cedarburg 53012 (414) 377-6030
Superior District Frank Cirilli Superior SR High 2600 Catlin Avenue Superior 54880 (715) 394-0269	Oshkosh District Gaylord Unbehaun Brillion Public Schools 315 South Main Street Brillion 54110 (414) 756-2166	Platteville District Robert Beaver Platteville High 710 East Madison Platteville 53818 (608) 348-2681
	Stevens Point District Edsel Vergin Mosinee Public Schools 700 High Street Mosinee 54455 (715) 693-2530	Whitewater District George Buckingham Whitewater High 401 South Elizabeth Whitewater 53190 (414) 473-2611

Chairman of the Board: Mr. George Buckingham, Whitewater  
 Vice-Chairman of the Board: Mr. Frank Cirilli, Superior  
 Advisor in Speech: Professor Pauline Isaacson, UW-Stevens Point  
 Advisor in Drama: Professor Calvin Quayle, UW-Eau Claire  
 Secretary-Treasurer: Larry E. Larmer, 218 Lowell Hall, 610 Langdon,  
 Madison 53706 - (608) 262-2313

## PART I: THE BOARD OF CONTROL

### District/Section Chairperson Elections

Later this spring the State Office will be conducting elections on Board members whose terms expire this year. As you know, district chairpersons are administrators and sectional chairpersons are teachers. Please give some thought to possible candidates for these positions and exercise your vote. Below are listed the Board positions for which elections will be held and an indication of whether or not the incumbent will be a candidate.

Central Section - Fern Stefoniak is not a candidate  
 Green Bay District - Bill O'Brien is a candidate  
 Oshkosh District - Gaylord Unbehaun is not a candidate  
 Platteville District - Robert Beaver is a candidate  
 Whitewater District - George Buckingham is a candidate

### May Board Meeting

The next meeting of the WHSFA Board of Control will be on May 1 and 2, 1975, in Madison. Please inform your district or sectional chairperson of any topics you would like to have the Board consider.

## PART II: THE STATE OFFICE

### Summary of the State Debate Coaches Meeting

As usual, coaches with teams attending the State Debate Tournament meet during the tournament to discuss several items. The meeting, of course, is not an official meeting; the group can provide feedback and recommendation to the State Office, but does not determine policy. So that coaches throughout the state can be advised of the proceedings at the tournament, the following summary is provided.

- A. It was recommended that every effort be made to bring Wisconsin's debate topic into line with the national choice or at least with the surrounding states. (The State Office is currently attempting to see to it that, if Wisconsin's topic choice differs from national preferences or from neighboring states, coaches will be advised and a possible re-vote taken.)
- B. It was recommended that each school attending the State Debate Tournament be provided with a list of other attending schools along with an indication of the division the school will enter.
- C. It was recommended that fees for attending the State Debate Tournament be increased, if necessary, to avoid severe financial losses.
- D. It was recommended that an attempt be made to secure judges for the State Debate Tournament who have had some experience judging the current year's topic.
- E. It was recommended that questionnaires be distributed which would determine whether or not the membership of debate schools would prefer some sort of elimination rounds procedure in the four-speaker division.
- F. It was recommended that the membership also be polled to determine whether or not they would prefer to return to a consolation series in the two-speaker division.
- G. It was recommended that an effort be made to have the State Debate Contest series end earlier than it now does--preferably by having the State Debate Tournament on the old sectional dates and have the district tournaments on the original district dates.
- H. It was recommended that the policy of the Association to distribute free copies of the Forensic Quarterly to debate schools be dropped if necessary to ease the financial loss of the overall debate series.
- I. It was recommended that the State Office explore the possibility of a state novice tournament.

## National Debate Topic Area for 1975-76

The State Office has received word from the NDEA Committee on Discussion and Debate that the National Problem Area for 1975-76 is: "What policy for the development and allocation of scarce world resources would best serve the interests of the people of the world?"

Wisconsin debate schools are currently voting to select one of the following resolutions:

- RESOLVED: That the development and allocation of scarce world resources should be controlled by an international organization.
- RESOLVED: That the development and allocation of world food resources should be controlled by an international organization.
- RESOLVED: That the development and allocation of world energy resources should be controlled by an international organization.

### Questions and Answers on WHSFA Contests

The last issue of the WHSFA Newsletter contained a section on questions and answers about WHSFA rules and procedures. Below are some additional questions and their answers which have arisen since the issuance of the last Newsletter.

Question: Due to prior commitments, two members of \_\_\_\_\_'s Play-Acting cast cannot attend the state competition on April 19. I would like to know if it would be possible for them to be judged in \_\_\_\_\_ by a qualified judge from the University of Wisconsin-\_\_\_\_\_ as a substitute for attending state competition in Madison?

Answer: It is not possible to have them judged at \_\_\_\_\_. We do bend over backward to help people when the weather or some external factor prevents their attending a contest. However, we cannot be so flexible as to guarantee special arrangements for simple "prior commitments."

The Association sets up and announces its major dates five years in advance.

(Also note General Rule 14a.)

Question: I would like to make a recommendation about the sub-district contests. At the present time, subdistricts

are organized geographically regardless of the size of the school. Apparently, the rationale is that, since individuals are competing with individuals, the size of the school is unimportant. I do not agree with that for two reasons. One is that larger schools have many more students out for forensics, thus can take only their best students to the contest. Small schools often have to take anybody they can get. Larger schools usually have a speech major as a coach so students can be trained in speech to an extent not possible in smaller schools where the coach is often an English or history major who has little formal training in speech.

The result of these two factors is that the small school is pretty well forced out of competition at the subdistrict level. This is very discouraging to the students involved, and as a result of their lack of success, it becomes even harder to recruit students for forensics.

Subdistrict contests used to be held within athletic conferences. Music contests still are. Why couldn't the WHSFA return to this past practice? The small school would probably still bomb out at district, but it would have the glory of subdistrict success to be proud of.

Answer: Let me respond first by indicating why subdistricts do not necessarily coincide with athletic conferences. The major reason is that all schools at a subdistrict must be members of the same district; athletic conferences often cut across WHSFA district lines. The second reason is that we control the size of subdistrict contests to only four to six schools so that scheduling is made easier--i.e., so that contests can be run after school or on a week-day evening if the participants prefer. Many athletic conferences exceed the size of our subdistrict limit.

On the general issue of large-school competitive edge over small schools, the evidence is not clear that such an advantage exists. There are many small schools which achieve a high proportion of "A's"--even at the state contest. It would require a systematic study of a number of contests in all districts over a number of years to confirm whether or not large schools have an undue advantage. Such a study would be interesting and worthwhile, but at present, the WHSFA does not have the resources to undertake it.

# PART III: SCHOOLS AND STUDENTS

## STATE DEBATE TOURNAMENT University of Wisconsin-Stevens Point

The 1975 State Debate Tournament was on the campus of the University of Wisconsin-Stevens Point on February 21 and 22. For the first time, the tournament was divided into two divisions, four-speaker and two-speaker. Below are the results of the State Debate Tournament.

### Four-Speaker Division

First Place: Kimberly  
(Coach: Ronald Ernst)

Affirmative  
Karen Whitney  
Jeffrey Huth  
Alternate

Negative  
Joe Bast  
Mike Sensiba  
Alternate  
Thomas Frassetto

(12 wins, 2 losses)

Second Place: Stevens Point SR  
(Coach: Dennis Bonikowske)

Affirmative  
Steve Crick  
Paul Emmons  
Alternate  
Connie Olson

Negative  
Cindy Kruger  
Elaine Rekowski  
Alternate  
Kurt Thurmaier

(10 wins, 4 losses)

Third Place: Appleton West  
(Coach: Duaine Bosin)

Affirmative  
John Gschwind  
Brad Smith  
Alternate  
Tim Hanna

Negative  
Dan Plette  
Kim Taylor  
Alternate

(10 wins, 4 losses)

Appleton East  
(Coach: Sandy Hoecherl)

Affirmative  
John Gribble  
Dave Miller  
Alternate  
Sharon Schwab

Negative  
Ben Goldgar  
Nick Schneider  
Alternate  
Liz Seager

(9 wins, 5 losses)

Chippewa Falls SR  
(Coaches: Donald Burke and Julie Stafford)

Affirmative  
Peter Leyh  
Dick Leinenkugel  
Alternate  
Tom Anderson

(4 wins, 10 losses)

Clintonville SR  
(Coach: Jerry Mc Ginley)

Affirmative  
Julie Gay  
Bob Bennett  
Alternate  
Amy Obohauser

(9 wins, 5 losses)

Elkhorn  
(Coach: Roland Faas)

Affirmative  
Marge Kammerad  
Joe Kohli  
Alternate  
Pat Kohli

(1 win, 13 losses)

Fort Atkinson SR  
(Coach: Elwood Carlson)

Affirmative  
Greg Bauer  
Tom Mc Cord  
Alternate  
Dave Ambrose

(6 wins, 8 losses)

Green Bay Ashwaubenon  
(Coach: Ron Marler)

Affirmative  
Jeff Steeno  
Gary Ferrier  
Alternate  
Larry Henke

(8 wins, 6 losses)

Negative  
Bob Hempelman  
Dana Nesja  
Alternate  
Jill Maitland

Negative  
Ray Huber  
Paula Wunsch  
Alternate  
Tom Bennett

Negative  
Linda Clement  
Ken Kaminack  
Alternate  
Warren Flitcroft

Negative  
Bob Petrie  
Joe Hunsader  
Alternate  
Mike Goodman

Negative  
Ralph Metzner  
Joel English  
Alternate

Green Bay West  
(Coach: Paul Plantico)

Affirmative  
Mary Ryan  
Dean Amei  
Alternate  
David Becker

(3 wins, 11 losses)

Greendale  
(Coach: Jan Settle)

Affirmative  
Dana Herman  
Jeanne Knepprath  
Alternate  
Tom Kulaga

(9 wins, 5 losses)

Kaukauna  
(Coach: Robert Rutter)

Affirmative  
Jack Ebben  
Steve Belling  
Alternate  
Dale Carnot

(4 wins, 10 losses)

Madison Memorial  
(Coach: Gregory Mueller)

Affirmative  
Sue Heins  
Pat Mc Carthy  
Alternate  
Cindy Rebholz

(4 wins, 10 losses)

Oconomowoc SR  
(Coaches: David Furrer and Jim Fuller)

Affirmative  
Gretchen Weix  
Greg Knutson  
Alternate  
Tim Cronin

(8 wins, 6 losses)

Negative  
Richard Noack  
Martin Schroeder  
Alternate  
Patrick Frase

Negative  
Russ Wolff  
Debi Spoerk  
Alternate  
Lynda Scheibe

Negative  
Mark Spielbauer  
Rose Simon  
Alternate  
Dave Wiedenhaupt

Negative  
Eric Hillemann  
David Rapkin  
Alternate  
Cindy Rebholz

Negative  
Peter Cahill  
Mark Huber  
Alternate  
Andrew Murphey

Oconto Falls  
(Coach: Don Rex)

Affirmative  
Andrea Cribb  
Teresa Cribb  
Alternate  
Lyn Zippel

(9 wins, 5 losses)

Ripon SR  
(Coach: Katherine Kasten)

Affirmative  
Beverly Wickstrom  
Debbie Jenkin  
Alternate  
Cathy Galica

(7 wins, 7 losses)

St Croix Falls  
(Coach: Susan Mc Donald)

Affirmative  
Heather Bjork  
Mark Severson  
Alternate  
Curtis Petzel

(7 wins, 7 losses)

Sun Prairie  
(Coach: Ramon Hagedorn)

Affirmative  
Guy Gaulke  
Michele Miller  
Alternate  
Fred Bartol

(2 wins, 12 losses)

Wausau East  
(Coach: Dennis O'Flyng)

Affirmative  
Amy Toburen  
Laurie Paulsen  
Alternate  
Nora Fitzgerald

(9 wins, 5 losses)

Negative  
Patti Piper  
Ann Marie Cyr  
Alternate  
Debbie Bourassa

Negative  
Michael Sabel  
Brenda Jenkin  
Alternate  
Cathy Galica

Negative  
Robin Cross  
Debbie Schmalz  
Alternate  
Curtis Petzel

Negative  
David Taylor  
Erin Maloney  
Alternate  
Donna Zielke

Negative  
Mike Paulsen  
Chris Thorn  
Alternate  
Nora Fitzgerald

Wausau West  
(Coach: James Grinsel)

Affirmative  
Jeff Klapperich  
Denise Madigan  
Alternate  
Linda Lewis

(8 wins, 6 losses)

West Bend East  
(Coach: Doris Ormson)

Affirmative  
John Ibler  
Ann Holmquist  
Alternate  
Rosie Wiedmeyer

(9 wins, 5 losses)

Wisconsin Rapids Assumption  
(Coach: John Swendrowski)

Affirmative  
Jane Kirschling  
Bruce Haas  
Alternate  
Linda Mech

(8 wins, 6 losses)

Wisconsin Rapids Lincoln  
(Coach: Donna Frenzel)

Affirmative  
Gordon Crouse  
David Malin  
Alternate  
Ann Jeffery

(5 wins, 9 losses)

Negative  
Dan Sargent  
Chris Bangle  
Alternate  
Ed Pearson

Negative  
Meri Larson  
Allison Reak  
Alternate  
Lisa Huber

Negative  
Barb Bender  
Mike Barrett  
Alternate  
Dominique Fifi

Negative  
Theresa Spaude  
Helen Wood  
Alternate  
Sally Johnson

Two-Speaker Division

First Place: Eau Claire Memorial  
(Coach: Art Mc Million)

Team "M"  
Greg Haug  
Ned Wahl  
Alternate  
Scott Sundby

Second Place: Milwaukee Marquette  
(Coach: James Copeland)

Team "M"  
James Fleissner  
Craig Muller  
Alternate  
Bill Treacy

Third Place: Milwaukee Pius XI  
(Coach: Thomas Sullivan)

Team "R"  
Daniel Murphy  
Steven Conlon  
Alternate  
Martin Burd

Third Place: Sheboygan North  
(Coach: Kimetia Strycker)

Team "M"  
Ron Vander Weele  
Mike Axel  
Alternate  
Diane Rainey

Quarter Finalist: Platteville  
(Coach: James Holt)

Team "R"  
Charles Young  
Robert Harvey  
Alternate  
Andrew Burris

Quarter Finalist: Eau Claire Memorial  
(Coach: Art Mc Million)

Team "R"  
Brad Berg  
Rich Mayne  
Alternate  
Greg Everts

Quarter Finalist: Milwaukee Marquette  
(Coach: James Copeland)

Team "R"  
Mike Brody  
Tony Cafaro  
Alternate  
Mike Flanagan

Quarter Finalist: Brookfield Central  
(Coach: Drucilla Munson)

Team "M"  
Bob Gleason  
Ann Heyrman  
Alternate  
David Goblirsch

Amery  
(Coach: Gregory Olson)

Team "M"  
Tim Enneking  
Mark Gilbertson  
Alternate  
Liz Maltby  
(2 wins, 2 losses)

Brookfield Central  
(Coach: Drucilla Munson)

Team "R"  
John Knutson  
Kevin Wolf  
Alternate  
Cari Davis  
(2 wins, 2 losses)

Team "R"  
Maureen Mc Glynn  
Regina O'Connor  
Alternate  
Bob Gleason  
(2 wins, 2 losses)

Durand  
(Coach: R. M. Duesterbeck)

Team "M"  
Linda Spindler  
Mary Sobottka  
Alternate  
Kim Morey  
(1 win, 3 losses)

Team "R"  
Cindy Hulverson  
Debbie Oncken  
Alternate  
Karen Mc Naughton  
(3 wins, 1 loss)  
(lost run-off round)

Hartford Union  
(Coach: Carol Hagen)

Team "M"  
Greg Weber  
Andy Running  
Alternate  
Marion Schmitt  
(1 win, 3 losses)

Team "R"  
Kurt Soschinske  
Peter Frankwicz  
Alternate  
Barb Hurula  
(1 win, 3 losses)

Middleton  
(Coach: William Mitchell)

Team "M"  
Paula Riesch  
Betty Austin  
Alternate  
Wynne Putz  
(2 wins, 2 losses)

Team "R"  
Mark Jackson  
Bart Rittenhouse  
Alternate  
Ann Ustad  
(2 wins, 2 losses)

Milwaukee Nicolet  
(Coach: John Steinbrecker)

Team "M"  
Jeff Wagner  
Dan Chudnow  
Alternate  
Bob Elconin  
(2 wins, 2 losses)

Team "R"  
Steve Karrasch  
John Schoepke  
Alternate  
Jim Edelman  
(0 wins, 4 losses)

Milwaukee Pius XI  
(Coach: Thomas Sullivan)

Team "M"  
David De Nomie  
Margaret Quinn  
Alternate  
Paul Kosidowski  
(2 wins, 2 losses)

Platteville  
(Coach: James Holt)

Team "M"  
Kenneth Short  
Sun Kang  
Alternate  
Andrew Burris  
(1 win, 3 losses)

River Falls SR  
(Coach: Margaret Kitze)

Team "M"  
Eric Rishel  
Dean Ammerman  
Alternate  
Kristi Matzek  
(0 wins, 4 losses)

Team "R"  
Peter Larson  
Jeff Larson  
Alternate  
David Erickson  
(1 win, 3 losses)

Sheboygan North  
(Coach: Kimetia Strycker)

Team "R"  
Jackie Gier  
Paul Planton  
Alternate  
Hal Korman  
(2 wins, 2 losses)

Waukesha  
(Coach: Ken Sajdak)

Team "M"  
Joe Boxhorn  
Bob Beitz  
Alternate  
Sandy Argus  
(0 wins, 4 losses)

Team "R"  
Chris Trebatoski  
Steve Schultz  
Alternate  
Chris Causey  
(0 wins, 4 losses)

Wauwatosa East  
(Coach: Robert Bearden)

Team "M"  
Rich Leiterman  
John Wilkinson  
(1 win, 3 losses)

Team "R"  
Sue Esser  
Jodi Equitz  
(1 win, 3 losses)

SUMMARY OF DISTRICT DEBATE TOURNAMENTS-1974-75

Eau Claire District at Eau Claire Memorial

	Won	Lost		Won	Lost
Eau Claire Memorial	6	0	Onalaska	3	3
Chippewa Falls SR	4	2	Chippewa Falls McDonnell	2	4
Altoona	3	3	Rice Lake	0	6
Eau Claire North	3	3			

Kenosha District at Milwaukee Marquette

Milwaukee Marquette	6	0	Milwaukee Juneau	2	4
Milwaukee Pius XI	5	1	Muskego	2	4
Greendale	4	2	Oak Creek	1	5
Waukesha	4	2	West Allis Nathan Hale	0	6
South Milwaukee	3	3			



# Milwaukee District at Brookfield Central

	Won	Lost		Won	Lost
Brookfield Central	6	0	Whitefish Bay	3	3
Milwaukee Nicolet	6	0	Hartland Arrowhead	2	4
Hartford Union	5	1	Mequon Homestead	2	4
Oconomowoc SR	4	2	Slinger	2	4
Wauwatosa East	4	2	Menomonee Falls North	1	5
West Bend East	4	2	Kewaskum	0	6
Wauwatosa West	3	3	Milwaukee Madison	0	6
West Bend West	3	3			

# Oshkosh District at UW-Oshkosh

Sheboygan North	6	0	Kohler	2	4
Ripon	4	2	Sheboygan South	2	4
Neenah Armstrong	3	3	Waupun	1	5
Oshkosh West	3	3			

# River Falls District at UW-River Falls

	Won	Lost		Won	Lost
River Falls	6	0	Minocqua Lakeland	2	4
Amery	5	1	Superior SR	2	4
Durand	4	2	Osceola	1	5
St Croix Falls	4	2	Drummond	0	6

# Stevens Point District at Stevens Point Area High School

	Won	Lost		Won	Lost
Stevens Point	6	0	Merrill	2	4
Wausau East	5	1	Rhineland	2	4
Wausau West	5	1	Schofield D C Everest	2	4
Wisconsin Rapids Assump	4	2	Waupaca	2	4
Wisconsin Rapids Lincoln	4	2	Antigo	1	5
La Crosse Central	2	4	La Crosse Aquinas	1	5

# PART IV: CALENDAR INFORMATION

*June 14-25, 76*

May 2

University of Wisconsin-Whitewater will conduct a one-day workshop to help high school students and teachers prepare for the Bicentennial Youth Debates. The program will run from 8:30 a.m. until 2:00 p.m. A film on the Bicentennial Debates will be included. Everybody is invited at no cost; participants must provide for their own lunches. For further information contact Professor Edna Sorber, UW-Whitewater.

June 16-27

Forensic workshop for high school students. Sponsored by WHSFA, University of Wisconsin-Extension, and University of Wisconsin-Whitewater. A two-week workshop in WHSFA spring speech categories. For further information, write to Larry E. Larmer, 218 Lowell Hall, 610 Langdon Street, Madison, Wisconsin 53706.

July 14-Aug 8

Debate (July 14-July 25) and Forensic (July 28-August 8) workshops for high school students. Sponsored by WHSFA, University of Wisconsin-Extension, and University of Wisconsin-Oshkosh. For further information, contact Larry E. Larmer, 218 Lowell Hall, 610 Langdon Street, Madison, Wisconsin 53706.

## PART V: PROFESSIONAL INTEREST

### LUXEMBURG-CASCO: A FLOURISHING PROGRAM

One of the truly gratifying aspects of the WHSFA program is to note those schools who use speech and drama activities in a genuinely co-curricular sense--as an enriching adjunct to the classroom through which the teacher can provide experiences far beyond those possible in a normal class setting. Such seems clearly to be the case at Luxemburg-Casco High School.

Perhaps one of the most remarkable things about Luxemburg-Casco's program is the rate and magnitude of its recent growth. Just five years ago, the school had a fairly routine set of offerings. At that time there were only two annual plays--a contest play and a school play. All speech and drama were totally extracurricular--no classes were offered.

Then Lynda Miller came to Luxemburg-Casco and things began to turn around. The best index to the extent of change is the range of activities in drama made available to all students. Now Luxemburg-Casco has three major productions a year, including the contest play, a variety show, and an experimental production. Group trips are taken to conferences in surrounding states as well as Wisconsin, and Luxemburg-Casco's students often perform at such events. Ms. Miller takes her students on yearly trips to the Guthrie Theatre in Minneapolis and the Minneapolis Institute of the Arts Children's Theatre.

The program has expanded greatly in a curricular sense as well. In addition to debate and forensic courses, there are six sections of drama classes in which students can enroll in children's theatre, play reading, acting, and backstage skills. Of particular note is the work Luxemburg-Casco students do with elementary school youngsters. Creative dramatics is taught in some elementary school classrooms throughout the year; the high school children's theatre students teach creative dramatics to all kindergarten and first graders.

Luxemburg-Casco students respond enthusiastically to the richness of the drama program. The school has an active Thespian Troupe with 82 members, including alumni. In addition, the Footlighters Club is open to all students in the school and attracts about 200 members each year out of a total school enrollment of around 530. The appreciation the students have for the drama offerings is best expressed by one of them, Sheri Servais: "Being a Thespian means everything in the world to me. I've traveled to more places than I could have ever dreamed. It's what I love. Even more, it's rewarding to me and my parents. I've made friends I'll never forget. If I were to write all my experiences, I'd have to write a book. The life of a Thespian is beautiful, and my experiences will forever remain inside me."

The establishing of a drama program of the magnitude of Luxemburg-Casco's requires, among many other things, community support and

enthusiastic leadership. Parents of Luxemburg-Casco students frequently volunteer such production assistance as help with costumes, hair styling, wiring, etc. The real measure of community support, however, is the manner in which they attend productions. The Luxemburg-Casco area responds eagerly to Ms. Miller's attempts to explore a new kind of theatre each year. This past year, the "Fantasticks" was performed in a dinner theatre setting at the Northbrook Country Club and played four nights to a standing-room only crowd. The play was then invited to perform in Kewaunee for a two-night run. Further, it is not unusual for Luxemburg-Casco's children's theatre performances to be sold out weeks in advance.

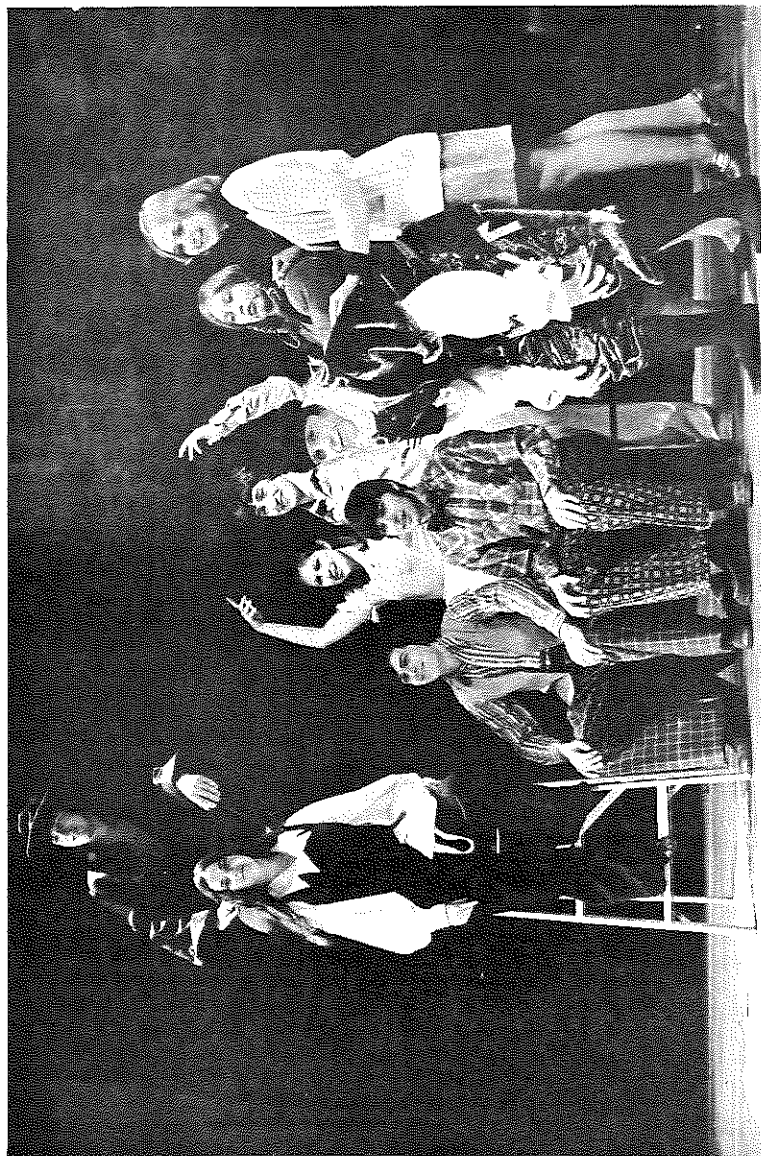
The energetic and dedicated leadership necessary to the development of Luxemburg-Casco's drama program has been provided by Lynda Miller. Her range of talents goes beyond strictly theatre work; she teaches courses in debate and media and directs the forensics program.

In all of Ms. Miller's theatre work, she sees to it that the learning experience for the students is more than just performing. They are involved in all phases of production--including set design, make-up, musical direction, and choreography.

Her devotion to her students as well as her talents are reflected in her original children's theatre play, "Lions and Tigers and Us," which she wrote especially for eight of her Thespians. "Lions and Tigers and Us" is currently being performed by other secondary-school children's theatre groups, and, indeed, was instrumental in securing for Lynda the Bush Fellowship to study at the University of Minnesota beginning in the 1975-76 school year.

Further testimony from Shari Servais will reveal the degree to which Ms. Miller's involvement with her students adds to the quality of their experience: "The wonderful person who brought Luxemburg-Casco's drama program to a number-one troupe in Wisconsin is Ms. Lynda Miller. In a school of 500 students, 200 are a part of the drama department. Ms. Miller has come to earn the title 'Mom' by all the Thespians because of our closeness. We are more like a family than a club or group. We all admire Mom's creativity and enthusiasm. We especially love the 'break-a-legs' we always receive before performing. Nobody could ever pass up one of Mom's lasagna dinners. We are a very united group and together we 'perform the impossible.'"

The WHSFA extends sincere congratulations to Luxemburg-Casco High School, its drama students, and Ms. Miller. We hope involvement in the Association's Drama Contest series has aided in the development of the rich and vital program they have today.



A scene from Luxemburg-Casco's production of "Fantasticks"



Steve De Baker in "Lions and Tigers and Us"



Luxemburg-Casco's WHSFA Drama Contest entry was a cutting from "The Merry Wives of Windsor!"