

Wisconsin High School Forensic Association Newsletter

Vol. XLVII

Madison, Wisconsin, December 1975

No. 2



WISCONSIN HIGH SCHOOL FORENSIC ASSOCIATION
LOWELL HALL, 610 LANGDON STREET
MADISON, WISCONSIN 53706
affiliated with
UNIVERSITY OF WISCONSIN - EXTENSION

CALENDAR FOR 1975-76

DATES FOR CONTESTS

	Drama (1975)	Debate (1976)	Speech (1976)
Subdistrict . . .	*Nov 1 . . .		*Mar 13 . . .
District	Nov 15 . . .	Jan 31 . . .	Mar 27 . . .
Section	Nov 22 . . .		
State	Dec 5-6 . . .	Feb 13-14 . .	Apr 24 . . .
*Latest dates for subdistrict contests; all others are firm.			
WEA Convention	Oct 30-31, 1975	Thanksgiving	Nov 27, 1975
Board Meetings	Nov 4-5, 1975	Easter	Apr 18, 1976
	May 6-7, 1976	State Basketball	Mar 20, 1976

BOARD OF CONTROL

NORTHERN SECTION

R.M. Duesterbeck
Durand 54736
715 672-8917

Eau Claire District

Bernard H. Bennett
Cornell 54732
715 239-6464

River Falls District

Wayne Gustafson
Osceola 54020
715 294-2127

Superior District

Frank Cirilli
Superior 54880
715 394-0269

CENTRAL SECTION

Dennis Bonikowski
Stevens Point SR 54481
715 341-5250

Green Bay District

William O'Brien
Pulaski 54162
414 822-3283

La Crosse District

Edwin Sievers
Viroqua 54665
608 637-3191

Oshkosh District

Richard Cross
Hilbert 54129
414 853-3531

Stevens Point District

Edsel Vergin
Mosinee 54455
715 693-2530

SOUTHERN SECTION

William Hintz
Lake Geneva Badger 53147
414 248-6243

Kenosha District

James Highland
Union Grove 53182
414 878-2434

Milwaukee District

Raymond Behnke
Cedarburg 53012
414 377-6030

Platteville District

Robert Beaver
Platteville 53818
608 348-2681

Whitewater District

George Buckingham
Whitewater 53190
414 473-2611

Chairman of the Board: George Buckingham, Whitewater
Vice-Chairman of the Board: Frank Cirilli, Superior
Advisor in Speech: Pauline Isaacson, UW-Stevens Point
Advisor in Drama: Calvin Quayle, UW-Eau Claire

Secretary-Treasurer: Larry E. Larmer
Room 224 Lowell Hall
610 Langdon Street
Madison, Wisconsin 53706
608 262-2313

TABLE OF CONTENTS

PART I: THE BOARD OF CONTROL - - - - - 1

 November Board Meeting - - - - - 1

 1976 Board Elections - - - - - 4

PART II: THE STATE OFFICE- - - - - 5

 Summer Workshops Planned - - - - - 5

PART III: SCHOOLS AND STUDENTS - - - - - 6

 The State Drama Contest- - - - - 6

 Sectional Drama Contests - - - - - 32

 District Drama Contests- - - - - 32

 Summary 1975-76 Drama Contest Participation- - - - - 34

PART IV: CALENDAR INFORMATION- - - - - 37

PART V: PROFESSIONAL INTEREST- - - - - 38

PART I: THE BOARD OF CONTROL

November Board Meeting

The regular meeting of the WHSFA Board of Control was held on November 4 and 5, 1975, at the Sheraton Inn in Madison. Below are the minutes of that meeting.

Agenda Item 1.

The meeting was called to order at 7:00 p.m. by the Chair, George Buckingham. Members present, in addition to Buckingham, were Frank Cirilli, Robert Beaver, Raymond Behnke, Bernard Bennett, Dennis Bonikowske, Richard Cross, R. M. Duesterbeck, Wayne Gustafson, James Highland, William Hintz, Edwin Sievers, and Edsel Vergin. Also in attendance were Advisor in Speech, Pauline Isaacson and Secretary-Treasurer, Larry E. Larmer. Absent was Advisor in Drama, Calvin Quayle. William O'Brien was absent on November 4, but joined the group on November 5. (The meeting recessed at 9:00 p.m. on November 4 and reconvened at 9:30 a.m. on November 5. All those present on November 4 were also present on November 5.)

Agenda Item 2.

George Buckingham and Frank Cirilli were unanimously elected as Board Chairperson and Vice-Chairperson respectively.

Agenda Item 3.

The minutes of the Board of Control meeting, May 1-2, 1975, were approved with the correction indicating the Board had approved a motion to increase the State Debate Tournament registration fees to \$50 and the judge honorarium to \$40. A roll-call vote was taken on this issue in May with the following results: Voting "Yes" were Buckingham, Cirilli, Duesterbeck, Bennett, Gustafson, O'Brien, Sievers, Unbehaun, Hintz, Highland, and Beaver; voting "No" were Behnke, Stefanik, and Vergin.

Agenda Item 4a.

The Secretary-Treasurer reminded district chairpersons to submit Drama Participation Report forms to the State Office at the conclusion of district Drama contests.

Agenda Item 4b.

The Secretary-Treasurer reminded all members to submit Expense Report forms for the current meeting before leaving.

Agenda Item 4c.

The Secretary-Treasurer announced that the terms of the following Board members would expire at the end of the current school year: Edsel Vergin, Chairperson, Stevens Point District; James Highland, Chairperson, Kenosha District; Frank Cirilli, Chairperson, Superior District; R. M. Duesterbeck, Chairperson, Northern Section; Calvin Quayle, Advisor in Drama; Pauline Isaacson, Advisor in Speech.

Agenda Item 4d.

The Secretary-Treasurer announced that the site of the 1976 State Debate Tournament would be University of Wisconsin-Stevens Point.

Agenda Item 4e.

4f.

The Secretary-Treasurer announced that he had been unable to complete, as yet, the revision of the District/Sectional Chairperson's Handbook nor to prepare an informational brochure on the Association.

Agenda Item 5a.

George Buckingham presented the auditor's report of the State Office for the 1974-75 fiscal year. Special appreciation was expressed to Shirley Mortenson for the careful and thorough manner in which the State Office books were kept.

Agenda Item 5b.

The Secretary-Treasurer presented and the Board subsequently approved a proposed budget for the State Office for the 1975-76 fiscal year.

Agenda Item 5c.

The Secretary-Treasurer distributed financial reports of district and sectional chairpersons.

Agenda Item 5d.

The Secretary-Treasurer presented a report on WHSFA membership as of 10-15-75.

Agenda Item 5e.

The Secretary-Treasurer reported on pending UWEX-WHSFA workshops for the coming year.

Agenda Item 5f.

Bill Hintz asked that the report from the JR High Participation Committee be postponed until the spring meeting. The Board approved the postponement.

Agenda Item 5g.

Hintz reported for the Contest Study Committee.

- 1) The Committee recommended a procedure for rotating judges at the State Drama Contest which would provide for oral criticism of each performance. The procedure, as approved by the Board, called for employing five judges and having one judge critique each cast following its performance.
- 2) The Committee recommended, and the Board approved, that the Secretary-Treasurer circulate order forms for the Forensic Quarterly to Debate schools and that copies of the Forensic Quarterly be distributed free only to those who order them.

- 3) The Committee reported that Debate schools generally endorsed the idea of a State Novice Debate Tournament. However, the WHSFA is awaiting the advice of the WDCA on particular tournament structure.
- 4) The Committee reported that member schools had endorsed the addition of Interpreter's Theatre as an option to Play Acting in Spring Speech. Rules, as previously devised by Calvin Quayle, are now to be circulated among member schools for approval.
- 5) The Committee reported the sentiment of membership that rules for Storytelling be revised to make it more extemporaneous and more distinct from Declamation. A subcommittee of Larmer, Seraphim, Hintz, and Buckingham was appointed to devise alternate rules for the membership's approval.
- 6) The Committee reported that a proposal to provide the option in State Speech Contest for students to pursue a single-winner championship had received endorsement by the membership by a slight margin. The Secretary-Treasurer was instructed to appoint a committee to devise particular rules for such an option for further approval by the coaches and administrators of member schools.
- 7) The Committee reported clarifications in Public Address and Demonstration Speaking rules which will be circulated to member schools by the Secretary-Treasurer.

Agenda Item 6a.

R. M. Duesterbeck was elected as official delegate to the annual meeting of the NUEA Committee on Discussion and Debate. Dennis Bonikowske was elected alternate.

Agenda Item 6b.

The Secretary-Treasurer discussed schedule conflicts with other groups and associations.

- a) It was reported that there are frequent conflicts with district Speech contests and district music solo-ensemble festivals. The Secretary-Treasurer reported that Dick Gaarder of the School Music Association is aware of the problem and has pledged to cooperate in overcoming it. It was also suggested that the Secretary-Treasurer contact the School of Music at University of Wisconsin-Eau Claire to see if their festival could be scheduled around district Speech contests. Beaver suggested that the WHSFA support a tentative plan of the WIAA to move some spring activities into the summer.
- b) The Secretary-Treasurer reported that WEA conventions have been conflicting with latest date for subdistrict Drama. No action was taken.
- c) The Secretary-Treasurer distributed a letter requesting that the 1976 spring Speech date be moved to May 1. It was noted that May 1 is the date of WSMA State Solo-Ensemble Festival. No action was taken.

Agenda Item 6c.

In order to provide more consistent policy across districts for handling special scheduling requests, the Board passed the following rule to be added as General Rule 14(i): "District and sectional chairpersons and/or managers of WHSFA events are under no obligation to make special arrangements for students or schools unable to attend regularly scheduled contests or tournaments. Under no circumstances may a student or school participate in a district or sectional contest or tournament other than the one designated by virtue of WHSFA membership."

Agenda Item 7a.

In order to protect contest hosts against last minute cancellations by participants, the Board passed the following motion to be added as General Rule 14(j): "Upon submitting an eligibility-registration form for any WHSFA contest or tournament, the member school becomes obligated to pay contest registration fees whether or not the school actually attended the contest or tournament."

Agenda Item 7b.

The Board instructed the Secretary-Treasurer to attempt to locate the Spring, 1976, Board meeting at the Holiday Inn at Stevens Point. It was further requested that all future Board meetings be scheduled for Thursdays and Fridays.

Agenda Item 8.

The meeting was adjourned at 11:10 a.m. on November 5, 1975.

- - - -

1976 Board Elections

In the spring of 1976, the State Office will conduct elections for the chairs of the Northern Section, the Kenosha District, the Stevens Point District, and the Superior District.

Mr. R. M. Duesterbeck, current chairperson of the Northern Section, will be a candidate for re-election.

Mr. James Highland, current chairperson of the Kenosha District, will not be a candidate for re-election.

Mr. Edsel Vergin, current chairperson of the Stevens Point District, will be a candidate for re-election.

Mr. Frank Cirilli, current chairperson of the Superior District, will be a candidate for re-election.

PART II: THE STATE OFFICE

Summer Workshops Planned

In cooperation with University of Wisconsin-Extension, the WHSFA is planning summer workshops for students in forensics and debate. For further information, contact the State Office.

June, 1976 - - - - - Two-week summer forensic workshop for students at University of Wisconsin-Whitewater.

July-August, 1976- - - Two- and three-week debate workshop for students at University of Wisconsin-Oshkosh.

PART III: SCHOOLS AND STUDENTS

The State Drama Contest

The State Drama Contest was held at the University of Wisconsin-Stevens Point on December 5-6, 1975. The next few pages report the awards earned by the 668 students from the thirty-two schools participating.

ALGOMA

"A"

"Once Upon a Playground"
Jack Frakes

Locale: A Playground
Time: Present - Late Afternoon

A gang of tomboys on a playground cruelly rejects a "girl with a funny nose," because she is "different." Amidst their realistic games and comic "tomboy talk" each member of the gang expresses her own fears of being different. In the end the "girl with the funny nose" discovers a boy like herself, and he offers friendship, hope, and illusion.

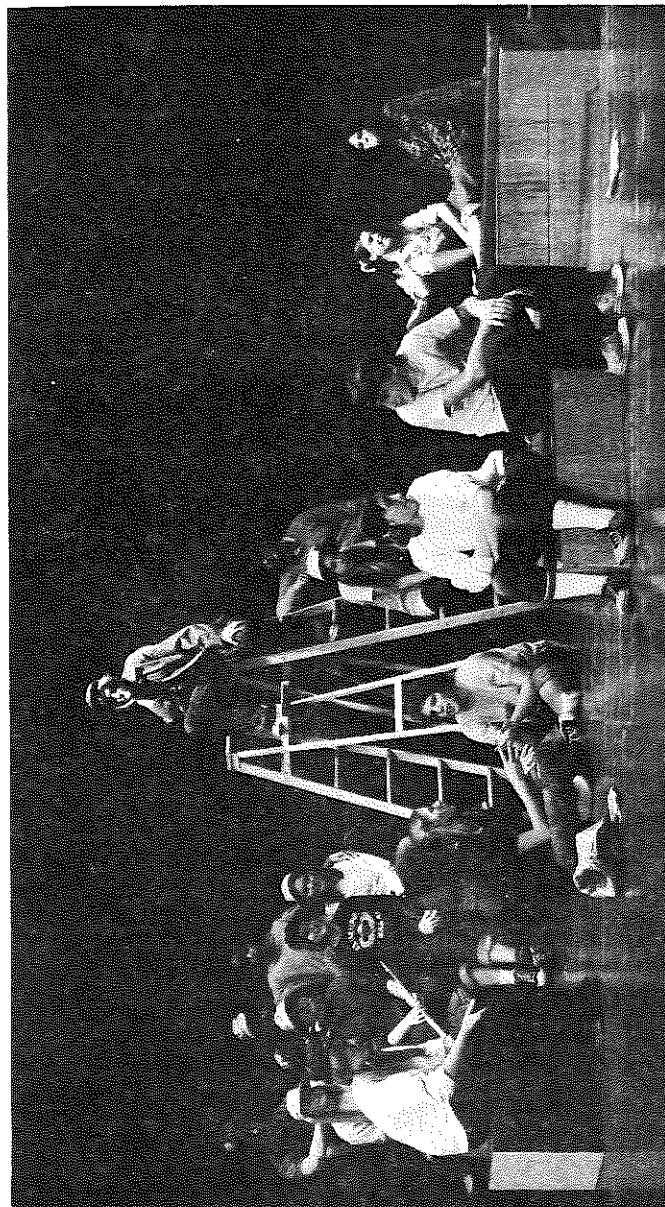
Director: David Loos
Student Director: Amy Zimmerman

Wanda Bun - - - - - Sue Annoye
Tootie Shoe - - - - - -Laura Perry
Didi Fee - - - - - -Barbara Evans
Forda Moore - - - - - Kathy Dequaine
Phoebe Dive - - - - - Carrie Haegele
Dixie Wicks - - - - - Sheri Byce
Flirt Stevens - - - - - Tricia Evans
Georgie - - - - - John Curtain
The Girl - - - - - -Bonnie Cmejla
The Boy - - - - - -Steve Grasley
Band - - - - - -Anne Maedke, Lori Ackerman, Kaare Pies,
Phil Ferris, Pam Mraz, Ann VanLonen, Bob Naze

Make-up Staff - - - - -Peggy Dier, Mary Hucek, Mary Martin, Lori Daul,
Laura Blazkovec, Lori Haegele, Janet Entringer,
Kathy Willems

Props Manager - - - - - -Barbara Vandermeuse

Prompters - - - - - -Sharon Byce, Patty Berg
Stage Crew Chairmen - - - - - Lee Feuerstein, Mike Knipfer
Make-up Chairmen - - - - - -Pam Harmann, Kathi Pionke
Lighting - - - - - - Tom Dier
Stage Crew - - - - - -Dan Zeman, Steve Hill, Pat Thielke,
Jake Blazkovec, Frank DeVillers, Mick Schwedler



The above scene is from Algoma's production of "Once Upon a Playground," directed by David Loos. The play received an "A" award at the State Drama Contest.

CHIPPEWA FALLS SR

"A"

"Compilation of Charlie Brown"
Charles Schultz

Locale: Playground
Time: Present

Charlie Brown is twenty-five years old. To celebrate his silver birthday, we are producing a compilation of his adventures. In the playground, on the baseball field, and in the classroom Charlie Brown is the failure and his friends Lucy, Patty, Schroeder, and Linus are his constant reminders. Even his dog Snoopy is disappointed; Charlie Brown never brings him coffee in the morning.

Director: Donald Burke
Student Director: Vicki Preuss

Charlie Brown - - - - - Dave Hodowanic
Lucy - - - - - Ann Meske
Patty - - - - - Linda Zank
Schroeder - - - - - Brad Dahlager
Linus - - - - - Dave Kraemer
Snoopy - - - - - Brian Van Stavern
Pianist - - - - - Melonie Dahlager

FRANKLIN

"A"

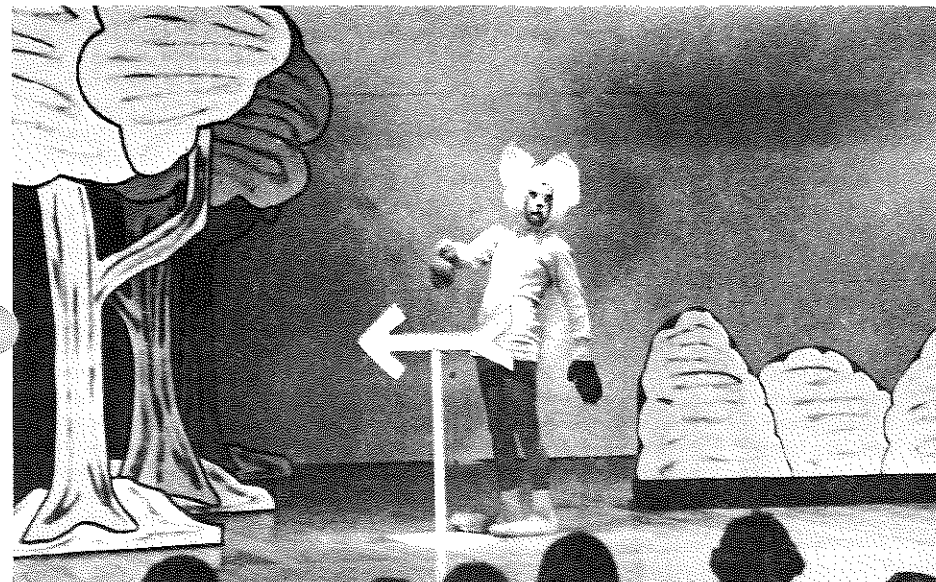
"The Hare and the Tortoise"
Alan Broadhurst

Locale: In and About the Woodlands
Time: Yesterday, If It Was Fine, Or Even This Very Afternoon

"Slow and steady wins the race," they say. This well-known Aesop's fable goes about proving that point in a setting where animals can be understood and humans speak gobbledegook.

Director: Jean Krueger
Student Director: Kathy Riske

Mr. Fleet - - - - - Jill Hartling
Mr. Sett - - - - - Jill Jozwiak
Mrs. Warren - - - - - Carol Mainus
Mr. Spiney - - - - - Mike Davis
Mr. Paddle - - - - - Jane Gyvro
Mr. Brush - - - - - Alan Stroik
Mr. Sloe - - - - - Peggy Pezze
Mrs. Dark - - - - - Terry Maas
Mr. Basket - - - - - Mary Stein
Jackie - - - - - Wendy Swanson
Robin - - - - - Kathy Riske
Fisherman - - - - - Eddie Albright
Mrs. Stainer - - - - - Nancy Aten



The above two photos are of the "Hare and the Tortoise," Franklin High School. The one-act play was directed by Jean Krueger, and the photos were taken by Patrick Stelloh. The play received an "A" award at the State Drama Contest.

Franklin Cont'd

Stage Director - - - - - Kathy Riske
 Make-up - - - - - Jan Piraino, Deb Bartlein, Barb Hecker,
 Karen Worzella, Ann Marie Stich, Mara Handziak,
 Amy Gandre, Laurie Kirkpatrick, Deb Standaert,
 Sandy Platek
 Stage Crew - - - - - Patti Denk, Therese Scherrei, Cathy Sineath,
 Dawn Nickels, Dawn Pagels, Deb Clybourn, Pam Hesse,
 Greg Schneider, Joan Handziak
 Costume Construction and Design - Mary Pyne, Dawn Pagels, Kathy Riske,
 Jill Hartling, Jill Jozwiak,
 Carol Mainus, Mike Davis, Jane Gyvro,
 Alan Stroik, Peggy Pezze, Terry Maas,
 Mary Stein, Wendy Swanson, Chris Androjna,
 Eddie Albright, Nancy Aten
 Set Design - - - - - Gary Krause

GREEN BAY BAY PORT
 "A"
 "Plaza Suite, Act III"
 Neil Simon

Locale: New York City
 Time: Present

Plaza Suite is a situation comedy in the Neil Simon tradition. The play opens when a wedding is about to take place at the Plaza Hotel. But the bride has locked herself in the bathroom, refuses to come out, and refuses to get married. The ensuing dilemma provides near hysteria for the parents, but a great deal of humor for the audience.

Director: Joan Barry
 Student Director: Kelly Heroux

Roy - - - - - John Belanger
 Norma - - - - - Melody Chambers
 Mimsey - - - - - Kelly Heroux
 Borden - - - - - Brian Utech

Sound Effects - - - - - Becky Winnie
 Stage Manager - - - - - Steve Walters
 Stage Crew - - - - - Vern Slurzarek, Jody Vollmar, Joe Gonant
 Set Design - - - - - Peggy Corbelle
 Assistant Stage Manager - - - - - Anne Yusvak
 Make-up - - - - - Sharri Nowicke, Kathy Compton, Kelly Nicklaus,
 Kim Stauff

GREEN BAY PREBLE

"A"

"The Bald Soprano"
 Eugene Ionesco

Locale: Anywhere (suburbs)
 Time: Anytime

Eugene Ionesco, like other absurdists, emerged during and after the world wars. Saturated with inflated rhetoric, propoganda, and diplomatic double talk which had sapped the essence out of communication, he used the leftovers of language--cliches, empty words for empty minds with a vengeance.

Feeling drama best when least plotted (plot being a veil concealing the action of a play) his Bald Soprano reveals structure by sucking out content.

This comedy on comedy, the tragedy of language poses generationally recurrent questions. Who are we? What's it all about? His answers like the play are vague and left to the individual.

Director: Enid Zerrenner
 Student Director: Sandy Jeanquart

Mrs. Smith - - - - - Julie Humke
 Mr. Smith - - - - - Don Casanova
 Mrs. Martin - - - - - Cherie Ziemer
 Mr. Martin - - - - - Jim Papham
 Mary - - - - - Laurie Lueck
 Fire Chief - - - - - Mike Knauf
 Clock - - - - - Tom Jaeger

Stage Crew - - - - - Karen Rathmann
 Props - - - - - Mary Soeter, Flo Osick
 Sound - - - - - Jim Gussert, John Harding
 Make-up - - - - - Liz Rowling, Julie Neerdaels, Mary Kuivenen, Mary Backes
 Lights - - - - - Tom Ihbe

GREENFIELD

"A"

"The Farce of the Worthy Master Pierre Patelin"
 Translated from Medieval French by Moritz Jagendorf

Locale: A Little Town in France
 Time: 1400

"Patelin" is a tale about a rogue written in the days when good always won out in the end. Patelin is a charming rogue, however, and through his antics, he manages to charm those of us in the audience as well as all those he meets in the story. It is a tale with a moral to it, but that's okay--sit back and enjoy it!

Greenfield Cont'd

Director: Carol Konet
Assistant Directors: Laurie DeLeon, Mary DeLeon

Market Woman - - - - -Patty Gureski
Flower Girl - - - - -Linda Szalacinski
Scam - - - - -Paul Abler
Deaf Mute - - - - -Kay Egide
Nun - - - - -Laurie Lewis
Musicians - - - Therese Agnew, Pam Geiken, Pam Jacobson, Paula Johnson
Jesters - - - - -Paul Crosby, Mark Demos
Guillemette - - - - -Kathy Pacala
Patelin - - - - -Mark Strube
Master William Joucelme - - - - -John Klein
Marie Lambkin - - - - -Lori Lentz
Judge - - - - -Chip Durant

Costumes--Crew Chiefs and Design- - - -Joanne Masnica, Roxanne Mason
Crew - - - - -Patti Booth, Patti Gureski, Pam Jacobson,
Sherry Singer, Lori Lentz, Maria Markovic, Patty McKillip
Make-up--Crew Chief - - - - -Margie Jones
Design and Application- Karen Dougherty, Carol Fuhrman, Patti Gureski,
Denise Heiden, Jill Jacobus, Paula Johnson,
Maria Karpfinger, Lori Lentz, Lauri Lewis,
Nora Luther, Jo Makurat, Pam Malecki, Maria Markovic,
Roxanne Mason, Joanne Masnica, Patty McKillip,
Cindy Pulte, Carrie Smith, Peggy Wood
Props - - - - -Joy Voit
Set - - - - -Rada Arezina, Duane Borgwardt, Eric Hass,
Mark Olson, Mark Pawelka, Mark Strube

LA FARGE

"A"

"The Diary of Adam and Eve"
Mark Twain
Adapted by Mark Bucci

Locale: Beginning of Time in the Garden of Eden
Time: Beginning of Time

"The Diary of Adam and Eve" was written by Mark Twain and was later adapted for the stage by Mark Bucci. The play is a product of Twain's inimitable sense of humor as he pokes fun at the original experiment--mankind.

Director: Sherri Parr
Student Director: Sue Clark

Adam - - - - -David Hough
Eve - - - - -Lynne Vosen
Snake - - - - -Kelly Shanahan

Stage Manager - - - - -Lynn Clark

MILWAUKEE HAMILTON SR

"A"

"Where Have All the Lightning Bugs Gone?"
Louis E. Carton

Locale: A Park
Time: Early Afternoon--Sunny Day

Director: Kathleen McDonnell

Girl - - - - -Karen Brunner
Boy - - - - -Charles Burkhardt

NEENAH ARMSTRONG

"A"

"The Little Peasant"
Paul Sills

Time: Long Ago

Drama probably had its earliest beginnings in simple stories or fables that were "acted out." Later, these stories were written down and passed from generation to generation in book form. Story Theatre brings the storybook back to life again. Though entertaining for children, often the tales from the past were meant for people of all ages.

Director: Rod Johnson
Technical Director: Jim Vorland
Student Director: Erin O'Neill
Student Technical Director: Steve Carpenter

Little Peasant - - - - -Bill Vought
Peasant's Wife - - - - -Claire Clifford
Cowherd - - - - -Roger Evansen
Farmer - - - - -Paul McKellips
Farmer's Wife - - - - -Val Walker
Parson - - - - -Mike Nielson
Mayor/Judge - - - - -Deniz Gursoy
Rich Peasant - - - - -Joan McLeod

Stage Crew - - - - -Tom Buck, Chris Silver, Bob Pontius,
Lori Hanson, Steve Carpenter
Lights - - - - -Steph Miller, Beth Hilgemann
Costumes - - - - -Julie Walsh, Sandy Atchison
Make-up - - - - -Amy Ross

PORT WASHINGTON
"A"

"Antigone"
Sophocles
Translated by John Gassner

Locale: Kingdom of Thebes in Greece; Before the King's Palace

Sophocles' Antigone stands today as one of the classic Greek Tragedies, in showing the results of inordinate pride. Yet, this play is more than that. In its various themes surrounding the right of the individual against that of the state and in its commands to "obey the will of God" rather than man, Antigone supplies to the modern audience an overwhelming sense of relevancy.

Director: Ralph Lohse

Antigone- - - - - Peggy Krainz
Ismene- - - - - Debbie Dean
Creon - - - - - Mark Angleos
Sentry- - - - - Alan Wallisch
Haemon- - - - - Doug Eshleman
Teiresias - - - - - Charlie Mackin
Messenger - - - - - Brian Kunz
Boy - - - - - Peter Angleos
The Chorus of Elders- - - - - Peggy Binsfeld, Kim Kunz, Cindy Wulff,
Lori Penkwitz, Peggy Turck, Donna Hunsicker,
Kathy Nadolski, Sue LaCrosse, Amy Heiser,
Sylvia Hoerig, Nancy Brown, Carol Adams
Eurydice- - - - - Annette Burkel
Attendants to the Queen - - - - - Chris Angelos, Michelle Ehrlich,
Janet Gunderman, Wendy Stockero
Guards- - - - - Mark Bocher, Brian Barsch, Kurt Thomas
Attendant to the King - - - - - Terry Nierode
Set Crew- - - - - Chris Wittkopp, Carrie Enoter, Jean Clausing,
Connie Kapp, Cheryl Graff, Peter Angelos,
Janet Gunderman, Cheryl Wilgren, Gary Dean,
Bob Menigoz, Erin Donovan, Cindy Wulff, Chris Angelos,
Theresa Larzelere
Lighting- - - - - Gary Dean
Sound - - - - - Bob Menigoz
Costume Design and Construction - - - - - Sue LaCrosse, Kris Tainter,
Kathy Schwanz, Kathy Nadolski,
Donna Hunsicker, Debbie Green

RICE LAKE
"A"

"Impromptu"
Tad Mosel

Locale: Partially Bare Stage, New York City
Time: Present

Four actors have received a message to report to a theater, where there are jobs waiting for them. When they arrived, they were told by the stage manager to go on stage immediately and improvise a play. "Impromptu" was written for the living theater while its author was studying at Yale. It is a provocative treatment of the theme: How much truth and how much illusion does a person need to live a balanced life?

Director: James Stoffregen
Student Directors: Kim Carlson, Lissa Williams

Ernest- - - - - Mark Liedl
Winifred- - - - - Bernie Sullivan
Tony- - - - - Dan Conley
Lori- - - - - Brenda Poppy
Stage Manager - - - - - Bambi Ashlin

WAUNAKEE
"A"

"Adaptation"
Elaine May

Locale: The Gameboard of Life
Time: The Present

Ever feel like your whole life is a TV game show? As we live each day we can't always find the answer to the bonus question and there are only three seconds left. Join in the fun and beat the buzzer.

Director: Larry Weiss
Assistant Director: Pamala Gardow
Student Director: Stella Woolley

Games Master- - - - - Dan Roelke
Players (Male)- - - - - Pete Geissler
Players (Female)- - - - - Diane Mulcahy
Contestant- - - - - Steve Keip
Set Design- - - - - Tracy Macken
Set Construction- - - - - Ken Buchanan, Bill Rutenberg, Steve Statz,
Rich Sweno, Yvonne Woolley
Lighting- - - - - Rick Braun, Dawn Fleiner, Mark Woolley
Properties- - - - - Cindy Becker, Peggy Gross, Sandy Stoltenberg
Make-up - - - - - Kary McLeisch
Sound - - - - - Mary Roelke, Dana Spychalla

WHITEFISH BAY

"A"

"Some Like It Hot"

Screenplay by Billy Wilder and J.A.L. Diamond

Adapted for the stage by M. M. Chalmers

Locale: Chicago and Miami

Time: 1929

A pair of hard-boiled male musicians disguised as femmes-fatales...A gang of speakeasy killers hot on their trail...And an all-girl band, famous for their hot lips and cool jazz...They're Miami bound. The fun comes fast when one of the masquerading musicians falls for a shapely chanteuse and the other finds himself engaged to a millionaire playboy.

Director: Mercedes Chalmers

Jerry - - - - - Michael Mishlove
 Joe - - - - - Timothy Dittrich
 1st Secretary - - - - - Carolyn Harris
 2nd Secretary - - - - - Peggy Laing
 Nellie - - - - - Sara Kurensky
 3rd Secretary - - - - - Joan Shikora
 Poliakoff - - - - - Mike Salomon
 Sue - - - - - Cathy Kochifos
 Bienstock - - - - - Ken Hayden
 Toothpick Charlie - - - - - Tabb Lewis
 Mechanic - - - - - Lev Spiro
 Henchman - - - - - Mike Hoffman
 Spats Columbo - - - - - Paul McComas
 Newsboy - - - - - Bill Kestin
 Sugar - - - - - Laurie Hasbrook
 Osgood Fielding III - - - - - Todd Kiehm
 Bellboy - - - - - Phil Mixer
 Rossella - - - - - Randy Dolnick
 Mary Lou - - - - - Margot Kelly
 Olga - - - - - Lisa Corcoran
 Emily - - - - - Viki Sebanz
 Dolores - - - - - Julie Huntington
 Society Syncopators - - Anne Becker, Sharon Glicksman, Mary Beth Holm,
 Tahirah Lee, Amy Sheyer, Shelley Taxman, Jody Usow
 Poker Players - - Mary Kortebein, Judy Kryshak, Nancy Old, Mary Wilson
 Scenery Design Chief - - - - - Mike Salomon
 Crew - - - - - Julie Allen, Patti Cronin, Mala Das Gupta,
 Barrie Dolnick, Susan Grygny, Beth Hardacre,
 Mike Hoffman, Phil Mixer, Joelle Rabion
 Costume Crew Chief - - - - - Maria Holperin
 Crew - - - - - Marian Alexander, Susan Anderson, Julie Hasbrook,
 Steffi Heinselman, Ellen Ostermann, Cathy Salamun, Laurie Zucker
 Props Crew Chief - - - - - Vicki Schmitz

Whitefish Bay Cont'd

Crew - - - - - Cherri Bessette, Mary Kortebein, Judy Kryshak,
 Laura Levings, Mary Walker, Terry Ward, Eileen Corcoran
 Make-up Design Chief - - - - - Peggy Laing
 Crew - - - - - Leslie Adashek, Darelle Bisquerra, Ellen Goldstein,
 Mary Beth Holm, Sara Kurensky, Mally Rohn, Mike Salomon,
 Joan Stroika
 Hairstyling Crew Chief - - - - - Barrie Dolnick
 Crew - - - - - Mala Das Gupta, Kathy Kessenich, Joelle Rabion, Sari Siegel
 Grips - - - - - Mary Ann Brand, Patti Cronin, Carolyn Crump,
 Ellen Dachauer, Susan Grygny, Judy Koppel,
 Cathy Salamun, Ann Tall
 Lights - - - - - Jeff Lowe, Jim Redford, Mark Tank
 Music and Sound - - - - - Mike Salomon, Liz Hahn
 Stage Manager - - - - - Mike Hoffman
 Assistant Stage Manager - - - - - Bob Schmitt
 Wardrobe Mistress - - - - - Susan Anderson
 Technical Director - - - - - Frank Laycock
 Assistant to Director - - - - - Liz Hahn
 Student Director - - - - - Mary Moder



"Some Like It Hot" was the play portrayed by students from Whitefish Bay High School. The play, directed by Mercedes Chalmers, received an "A" award at the State Drama Contest.

WHITEWATER
"A"
"Head of State"
John Ahart

Locale: Philadelphia in 1787

HEAD OF STATE is a re-examination of our nation's past from 1787-1789. During these years our leaders decided on a document on which to base our democracy and agreed upon the first "Head of State," George Washington. The production shows what can happen when actors are placed on the stage to play themselves and develop the character of heroes shown as legends and fallible human figures. "We cannot escape history."

Director: Virginia Newcomb
Student Directors: Kay Grosinske, Jeff Oberle

Narrator - - - - - Darrell Wagner
Washington - - - - - Charlie Davison
Adams - - - - - Shelby Scharine
Wilson - - - - - Jean Ludeman
Madison - - - - - Kevin Hartman
Franklin - - - - - Mike Killips
Ding - - - - - Terry Varney
Randolph - - - - - Donna Lyons
Morris - - - - - Jack Watrous
Gerry - - - - - Metzдорff
Pinckney - - - - - Cindy Inglefield
Pianist - - - - - Bobbi Rhodes
Guitar - - - - - Aldo Busot

Make-up & Costume - - - - - Lisa Fulton, Lynda Hale, Gail Henschel,
Jewell Lilly, Jane Markham, Kim Thomas
Lighting - - - - - Tom Knapp
Crew & Construction - - - - - Kevin Battram, Kevin Green, Jerry Knuteson,
Walter Rich

WINNECONNE
"A"
"Comings and Goings"
Megan Terry

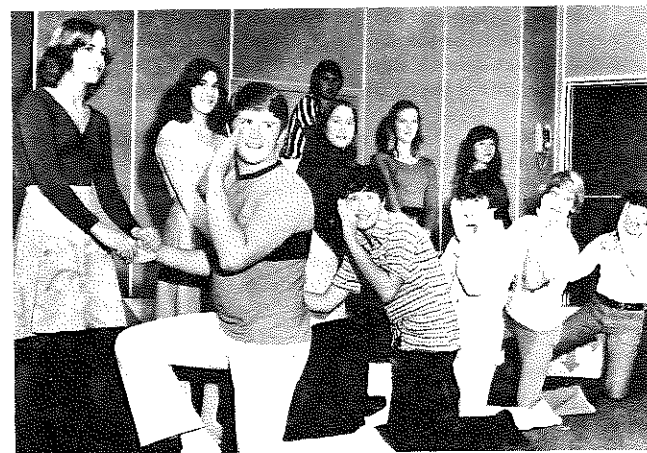
Locale: Everywhere
Time: Now

Comings and Goings is a play with a series of plots tied together by the theme of male-female love relationships. Its setting is several quickly changing realities which tend, of course, to jolt the on-stage action to flow or falter, depending upon the mood established. Characters are simply He and She played by any of the ten team members seated upon the stage. As in a game, the referee decides when the action needs to be stopped or new players called in.

Director: Catherine Mulqueen
Student Director: Nancy Opperman

He - - - - - Terry McDaniel, Darrel Luebke, Dick Luce,
Brian Dobberke, Mark Hoenecke
Referee - - - - - Jake Peterson
She - - - - - Lori Oleson, Julie Nelson, Stacy Lallas,
Marilyn Evanson, Cherrie O'Donnell

Stage Manager and Lighting - - - - - Nancy Opperman
Accompanist - - - - - Chris Petermann
Crew - - - - - Missy Roherick, Sue Evanson



Winneconne High School received an "A" award at the State Drama Contest for their play "Comings and Goings." The play was directed by Catherine Mulqueen.

CADOTT
"B"
"The Children's Hour"
Lilian Hellman

Locale: Mrs. Tilford's Living Room
Time: Modern Times

Two teachers in their late twenties, Karen Wright and Martha Dobie, have started a small private school in a farmhouse which they have recently purchased. Mrs. Mortar, who is the aunt of Miss Dobie, also teaches with them. The large farmhouse serves as classroom and living quarters for both the teachers and the all-girl student body which numbers around twenty pupils.

The conflict in the play centers around one of these pupils, thirteen-year old Mary Tilford, who, to put it tritely, is a "spoiled little brat." She lies, feigns sickness, and fawns affection to get what she wants. Whenever she is caught in her acts of deception, she tries to place the blame on another student.

Because Miss Wright and Miss Dobie have seen through Mary and have trapped her in her deception several times, Mary has developed a growing hatred of the two teachers. This hatred finally culminates in Mary telling her grandmother a horrendous lie--that she has observed Miss Dobie and Miss Wright in certain unnatural acts.

Mrs. Tilford believes her granddaughter is telling the absolute truth and in turn phones the mothers of the other pupils in the school telling them what she has learned. One of the mother's, Miss Wells, asks Mrs. Tilford if her daughter, Rosalie, may spend the night with her, and they will pick her up the next day as the drive is rather long. Thus, Rosalie enters the Tilford home shortly after the scene begins.

Being disturbed by the news herself, Mrs. Tilford has asked her nephew, Joe Cardin, over to visit so that she might discuss it with him. Thus, Joe enters near the beginning of the scene. Furthermore, Joe Cardin is engaged to Karen Wright.

Director: John Butterbrodt
Student Director: Gerry Haines

Amelia Tilford- - - - -Karen Sonnentag
Mary Tilford- - - - -Anne Lawrence
Rosalie - - - - -Faye Sonnentag
Joe Cardin- - - - -Dave Goodman
Karen Wright- - - - -Polly McBride
Martha Dobie- - - - -Karen Greene
Stage Manager - - - - -Gerry Haines

DE PERE
"B"
"Marat/Sade"
Peter Weiss

Locale: Charenton Asylum, France
Time: 1808

As therapy, the inmates of the asylum of Charenton perform a play showing how Jean Paul Marat was murdered in his bath by Charlotte Corday. Throughout the play, Marat and the Marquis de Sade discuss their philosophy of man.

Director: James De Lorme

Charlotte Corday- - - - - Cheryl Leinger
Simonne Evrard- - - - - Elizabeth Wolter
Marquis de Sade - - - - - Bart Terrell
Jean Paul Marat - - - - - Bill O'Donnell
Culmier - - - - - Cindy Trinkner
Jacques Roux- - - - - Jeff Jauquet
Herald- - - - - Jane Walraven
Polpoch - - - - - Chris Grutza
Kokol - - - - - Diane Roshong
Cucurucu- - - - - Annette Velpel
Rossignol - - - - - Holly Hussong
Nuns- - - - - Mary Leiberger, Jean Jaskolski
Nurses- - - - - Bea Koepke, Brett Terrell, Margaret De Both
Patients- - - - - Nanette Seyler, Kari Lasee, Charlene Romero,
Mary Nitka, Lisa Van Lanen, Chuck Steeno,
Julie Wall, Diane Carter, Cindy Olson
Crew- - - - - Lauri Neufeld, Amy Oleksi, Cheryl Van Beckum,
Theresa Dillhunt, Judy Steinfeldt, Eileen Steinfeldt,
Greg Mariucci, Annette De Cleene, Karen Kwasny,
Jeff Kaster, Tim Kolb

DRUMMOND
"B"
"The Lottery"
Brainerd Duffield

Locale: A Village Square
Time: The 27th of June

Shirley Jackson's story, dramatized by Brainerd Duffield, was published originally in the New Yorker magazine. This unusual dramatization with its shattering last scene produced an unprecedented reaction, capturing the mood and tension of the story that has become an internationally known classic of horror.

Drummond Cont'd

Like the story, it starts almost gaily as the people of the small farming community are assembling for the lottery. What family will it be this time? Which member? Only gradually do we begin to suspect the nature of the lottery as the play builds swiftly to its crucial and moving climax.

Director: Charlotte Oddo
Student Director: Brenda Regorrah

Tommy - - - - - Lisa Kirshling
Dickie - - - - - Paulette Tousley
Martin - - - - - John Gunderson
Delacroix - - - - - Ryan Fredericks
Hutchinson - - - - - Steve Gall
Tessie Hutchinson - - - - - Amy Wald
Davy Hutchinson - - - - - Debbie Terrel
Mrs. Dunbar - - - - - Kathie Parker
Mrs. Watson - - - - - Debbie Frels
Miss Bessom - - - - - Peggy Pease
Jack Wilkins - - - - - Steve Unseth
Old Man Warner - - - - - Tim Kern
Belva Summers - - - - - Patty Maciosek
Joe Summers - - - - - Dave Hanks
Little Girl - - - - - Michelle Needles

Adams - - - - - George Phillips
Allen - - - - - Sue Maleski
Appleby - - - - - Dawn Cleary
Barrows - - - - - Aline Blaser
Burgess - - - - - Carmel Ramseier
Caswell - - - - - Lisa Anderson
Collins - - - - - Brenda Regorrah
Foster - - - - - Renee Hammerschmidt
Graves - - - - - David Unseth
Tatum - - - - - Jackie Klebenow
Townsend - - - - - Wendy Weeks
Tuttle - - - - - Debbie Smith
Vincent - - - - - Ellen Phillips
Wives - - - - - Karen Croft, Phyllis Nelsen

Stage Manager - - - - - Marti Regorrah
Lighting - - - - - Roslyn Rockenbach
Sound Effects - - - - - Cheryl Hanks
Costumes - - - - - Sue Maleski
Make-up - - - - - Brenda Regorrah, Sue Maleski,
Roslyn Rockenbach
Props - - - - - Ellen Phillips, Renee Hammerschmidt, Lisa Anderson,
Jackie Klebenow, Peggy Pease

HAYWARD

"B"

"The Puppet Master"
Dennis Noble

Locale: Unimportant
Time: Unimportant

The Puppet Master is a unique play in that it combines acting with dance and pantomime. The story is about a boy and girl puppet. All the action is described by a narrator. These puppets realize that they are not dependent on the strings of the puppet master. They can move and dance and live without his help. However, their loyalty and dependence is too strong. The core of the play centers around this dilemma of whether to become alive or continue to act as puppets.

Director: Thomas Kuziej
Student Director: Neah Swiler

Boy Puppet - - - - - Glenn Driessen
Girl Puppet - - - - - Sue Klippel
Narrator - - - - - Mary Margaret Skamser

Lights - - - - - Larry Poppe
Make-up - - - - - Debbie Melby, Mike Duffy, Janie Cooper, Amy Spoolman

KENOSHA TREMPER

"B"

"The Brute"
Anton Chekhov

Locale: Drawing Room of a Russian Manor
Time: Before the Russian and Other Revolutions

Director: James Iaquina
Student Director: Sandy Sennholz

Luka - - - - - Mary Miller
Mrs. Popov - - - - - Nanci Shumway
Smirnov - - - - - Dave Rommel

Make-up - - - - - Laura Krogh, Pam Brown
Costumes - - - - - Cathy Mach, Linda Howell
Props - - - - - Mike Menden

MCFARLAND

"B"

"Medea Serban"

An Original Adaptation by Gene Olson

Locale: Jason and Medea's House Outside Corinth in Ancient Times

MEDEA SERBAN--an original adaptation by Gene Olson. Stylized in the manner of Andrei Serban and classical Augustan theatre.

Director: Gene Olson

Prologus: The Dancers- - - - -Jaci Allen, Kathy Lane, Elise Pierce,
Karin Glunn, Jane Moll, Penny Brandt,
Jean Roach, Sue Virmans, Carol Hruby,
Jean Goldsworthy
The Cretans- - - - -Don Schwartz, Tim Wood, Cindi Serig
The Prologue - - - - -Chuck West
Choros: The Corinthian Women - - - - Janet Vollmer, Chris Anderson,
Theresa Utterback, Toni Davis,
Laura Othrow, Mary Dobler, Sandy Hrovat,
Judy Pearson, Ann Gilpin, Nancy Medrow
Medea's Nurse - - - - -Jane Montague
The Greek Tutor - - - - -John Polewski
Jason's Sons- - - - -Larry Anderson, Ross Johnson
Medea - - - - -Debbie Smithmier
Jason - - - - -Al Pierce
Creon - - - - -Dave Burns
Creon's Attendants- - - - -Doug Jones, Tim Crye, Pete Scharf
Aegeus- - - - -Mike Graven
Creusa- - - - -Debbie Bauer
Creusa's Nurse- - - - -Randi Othrow
Creusa's Attendants - - - - -Janet Breitenbach, Coleen Peters
Sound - - - - -Debbie Gilpin, Roark Haver
Costumes- - - - -Debbie Manning
Costume Assistants- - - - -Beth Monthey, Nancy Utterback, Linda Wood
Lighting- - - - -Jurgen Paar (exchange student, Austria),
Zac Yelton, Tony Smalley
Stage Manager - - - - -Jerry Pulvermacher
Assistant Stage Managers- - - - Russ Bouffiou, Ken Graven, Kraig Haver
Properties- - - - -Brian Davis, Debbie Tkach, Roy Yelton
Make-up - - - - -Diane Johnson
Assistant Make-up - - - - -Michele Albert, Maureen Hoffman,
Gretchen Wallace

MENOMONIE SR

"B"

"To Bobolink, For Her Spirit"

William Inge

Locale: Sidewalk in Front of New York's 21 Club
Time: Late 1940's

In "To Bobolink," Inge has presented us with a slice of life; the play begins, the play ends. In between we observe the antics of an apparently amusing group of people who are thrown together in their search for autographs of movie celebrities. But beneath the humorous surface, the audience senses the pathetic groping of people striving to escape from the dull world of reality by catching a momentary glimpse of an artificial glamor world. The unglamorous group will undoubtedly go on waiting, trapped in the giggles, squeals, and sighs of a bygone era for an ephemeral world of gloss and glitter.

Director: Ellwyn Hendrickson
Student Director: Cindy Halvorson

Bobolink- - - - -Leila Heise
Nellie- - - - -Ann Schulman
Fritz - - - - -Bill Burns
Renny - - - - -Glynnis Lessing
Gretchen- - - - -Heidi Olstad
Annamarie - - - - -Lynn Boppel
Doorman - - - - -Dave Heintz
Elegant Couple- - - - -Shirley Holten, Tim Schneider
Starlet and Escort- - - - -Dee Wampler, Greg Gauthier
Stage Crew- - - - - *Mike Gauthier, Mike Schlenker, Scott Holten
Costumes- - - - - *Cathy Murphy, Rhonda Finder, Roxanne Cochram,
Suzanne Milavitz
Make-up - - - - - *Laurie Heymans, Mark Quilling, Sue Burdick
Properties- - - - - Becky Lammer

MONTELLO

"B"

"Where Have All the Lightning Bugs Gone?"

Lewis E. Catron

Locale: Park
Time: Today

"Where Have All the Lightning Bugs Gone?" is the first play in a trilogy about male and female pairs from youth to old age. It is a nostalgic play about the poignant wonder of love. The boy and girl meet and then fall in love by discovering how to "touch" as people. It is set in a park, and the time is the present.

Montello Cont'd

Director: Jim Usher
Student Directors: Joe Bonardi, Lillian Rinehart

Cast #1
Girl - - - - - Terry Bohn
Boy - - - - - Joe Bonardi
Cast #2
Girl - - - - - Janet Robinson
Boy - - - - - Jay Murray
Stage Manager - - - - - Peter Olsen

PLYMOUTH
"B"
"Catherine Howard"
Herbert Martin

Locale: England
Time: 1550

This is the story of Catherine, the fifth wife of Henry VIII, the beautiful pawn of the Howard family.

Director: Herb Stoltenberg

Catherine Howard - - - - - Julie Comerford
Anne Carey - - - - - Sue Lau
Lady Rochford - - - - - Libby Skelton
Duke of Norfolk - - - - - Mitch Matheys
Henry VIII - - - - - Renee Pierquet
Will Somers - - - - - Brian Marotz
Thomas Culpeper - - - - - Scot Janssen
Francis Dereham - - - - - Greg Hurlburt
Stanton - - - - - Dan Mountain
Steve Cuba

Make-up - - - - - Cindy Daniels, Diane Stahl
Sound - - - - - Scot Janssen
Stage Crew - - - - - Pete Cornell, Karen Mueller, Kevin Rorvedt, Lance O'Reilly

PULASKI
"B"

"Frankenstein Slept Here"
Tim Kelly

Locale: Castle of Baroness Frankenstein
Time: Present

Baroness Frankenstein has been working on restoring the famous Frankenstein monster and, due to all the expenses such a task requires, she has had to sell her castle to a rich American matron. All the "creatures of the night" that the baroness has been sheltering for many years are now faced with possible eviction unless they can come up with some scheme to make the new owner believe that all is functioning well in the castle.

Director: Julie Robinson

Baroness Frankenstein (a scientist) - - - - - Shelley Peterman
Igor - - - - - Gail Matuszak
The Monster - - - - - Kathy Streckenbach
The Phantom Bride - - - - - Karen Novitski
Jacqueline Hyde - - - - - Judy Kujawa
Medusa - - - - - Julie Caldwell
Vampira - - - - - Judy Manning
Hanna Hoople - - - - - Diane Socha
The Mummy - - - - - Kathy Beirovski
Pauline - - - - - Kay Jerabek
Ted - - - - - Pat Manning
The Werewolf - - - - - Dawn Beirovski
The Invisible Man - - - - - Pat Manning

Stage Manager - - - - - Linda Banaszynski
Stage Crew - - - - - Jane Bodart, Laurie Kornaus, Lynette Santy, Tami Siolka, Erin O'Connor, Bonnie Beirovski
Sound Effects and Lighting - - - - - John Jurecki, Gary Smith
Stand-in and Prompter - - - - - Alma Bernarde, Julie Krysiak

RICHLAND CENTER
"B"

"The Wonder Hat"
Ben Hecht, Kenneth Sawyer Goodman

Locale: A Park
Time: Evening

The Wonder Hat is a French comedy with the familiar French comic characters Harlequin, Perrot, and Columbine. The action of the play revolves around a "wonder" hat that renders the wearer invisible and a magic slipper that causes one to fall in love with the first person looked upon.

Richland Center Cont'd

Director Ken Beatty, Greg Hanke

Harlequin - - - - -	-Tom Vodak
Perrot - - - - -	-Mathew Fowell
Columbine - - - - -	- Marla Miller
Margot - - - - -	-Margaret Wheelock
Punchinello - - - - -	-David Elliott
Promenaders - - - - -	- Lee Elmsley, Nancy Adsit
Recorder - - - - -	- Cindy McCarthy
Stage Manager - - - - -	- Mark Collins
Make-up - - - - -	-Terri Nee
Properties - - - - -	- Ward Birkett

RIPON
"B"

"T.V."

Jean Claude Van Itallie

Locale: A Television Rating Room
Time: In The 1960's

"T.V." is a play that deals with the intrusion of television upon our lives. The play begins with the "real life" characters discussing their relationships with each other, but as the play progresses the "television characters" begin to intrude more and more into the action. In the final sequence the takeover of reality has been accomplished.

Director: John Saecker

Hal - - - - -	-Mark Trampf
Susan - - - - -	-Bev Wickstrom
George - - - - -	- Mike Robichaud
First Actor - - - - -	- Steve Kronmiller
First Actress - - - - -	- Patti Shaw
Second Actor - - - - -	- Pete Rosenberg
Second Actress - - - - -	- Sue Shaw
Third Actress - - - - -	-Maggie Brandt
Sound and Slides - - - - -	-Brenda Jenkin
Properties - - - - -	-Toni Miller

SEYMOUR

"B"

"The American Dream"
Edward Albee

Locale: Apartment Living Room
Time: Present

In our rapid-moving society it is difficult to take time and ponder one's situation. Soon all becomes a muddled race to be the typical American, living in the typically American way. Everything is seen through "rose-colored glasses," and eventually, nothing is real anymore. In "The American Dream," Albee comments on just such a situation. He takes a comic, but horribly real, look at what appears to be a family living in a set of artificial values, insensitivity toward each other, emasculation, and just plain emptiness. The American way of life becomes an American nightmare with all its fantastic horror-empty beings. It shocks one into the realization of the whole situation.

Director: Charlotte Boscamp

Mommy - - - - -	-Melody Schuyler
Daddy - - - - -	- Eugene Niespodzany
Grandma - - - - -	-Debbie Hackel
Mrs. Barker - - - - -	-Sandy VandeCorput
Young Man - - - - -	- Tim Melchert

Stage Crew - - - - - Patti Ulmen, Gail Ambrosius, Laurie Zahn

SUPERIOR SR

"B"

"The Shoemaker's Wife"

Hans Sachs
Adapted by David W. Thompson

Locale: Interior of the Cottage of Hans
Time: Mid-morning of an Ordinary Day in Medieval

"I don't think you love me anymore," insists Hans, the shoemaker, to his pretty young wife. Now begins a do-or-die contest of wit and counter-wit, with the inept Fritz hopelessly entangled in the wild ruses devised by Hans and his wife. But, let the play speak for itself--a lively farce, presented for your enjoyment.

Director: Joy Bashara
Assistant Director: Darlene Schmid

Hans, The Shoemaker - - - - -	-Patrick Byrne
His Pretty Wife - - - - -	- Mary Unterberger
Fritz - - - - -	-David Schuler
Hildi, a Minstrel - - - - -	-Wendy Meidt

Set Designer and Lighting - - - - -	- Chris Ross
Properties Mistress - - - - -	-Dawn Reagle
Costume Mistress - - - - -	-Wendy Meidt

TOMAHAWK
"B"

"Alice in Wonderland: The Manhattan Project"
Adapted from Lewis Carroll

Locale: Reality...A Dream World... A Nightmare?
Time: Sometime

When children play adult games...or is it adults playing children's games? Alice exists in a world of wonder that is real and make believe, positive and negative, meaningful and nonsense, all at the same time. As the Chesire cat says, "We are all mad, everyone of us."

Director: Peter Whiteneck
Student Director: Kim Albrecht

Cast- - - - - Lynn Martens, Bucky Gillett, Nicole Quirion,
Robert Bugarin, Cheri Thompson, Marsha Juve,
Mark Wurl, Keri Buedingen, Sue Houston, Sue Gane,
Dave Froemming, Todd Buedingen

Technical Assistants- - - Barb Postl, Einar Ingman, Donna Froemming,
Todd Buedingen, Dave Froemming

WASHINGTON ISLAND
"B"

"Oedipus the King"
Sophocles

Locale: House of Oedipus--City of Thebes
Time: Fifth Century B.C.

"Oedipus the King," by Sophocles, is a play of prophecy, revelation, and destruction. The play is brought to the audience through beautiful prose and the chanting voices of the "chorus."

Oedipus, the King of Thebes, seeks to rid the city of a plague brought upon it by the murder of Laius, the previous king. As Oedipus untangles the web of mystery surrounding the death of Laius, he finds that it is he who is the murderer. Oedipus soon realizes that he is bound up in the dreadful prophecy of Apollo. The prophecy that he would kill his father and marry his mother.

The Greek audience of the Fifth Century B.C. would have been familiar with both the myth of Oedipus and the style of theatrical production.

We hope to bring to this Twentieth Century audience the flavor and feeling of this most famous classic of theatre.

Washington Island Cont'd

Director: Frank Levy
Student Director: Bonnie Williamson

Oedipus - - - - - Earl Frank
Creon - - - - - Donald Stadler
Jocasta - - - - - -Lisa Velden
Tiresias- - - - - Patsy Gunnlaugsson
Chorus Leader - - - - - -Bonnie Williamson
Messenger - - - - - -Guy Linde
Shepherd- - - - - Monty Williamson
Drummer - - - - - -Jane Jessen
Chorus- - - - - Merrie Velden, Kevin Sheehy, David Foss,
Shelly Thompson, Michelle Gunnlaugsson
Stage Manager - - - - - Peter Andersen

WEST SALEM
"B"

"Sparkin'"
E. Conkle

Locale: Farm Country, Nebraska
Time: Early 1900's

Sparkin' can be a great experience for a young man and woman, especially if it's the first time for both. Mr. Conkle, in this one act, shows that there can also be a painful side to courting if it is witnessed by an over-interested third party.

Director: Joan Solie
Student Director: Jennifer Balmer

Granny Painsberry - - - - - Lisa Heckelbeck
Lessie Hanna- - - - - -Peg Piepenhagen
Susan Hanna - - - - - -Paula Ender
Orry Sparks - - - - - -Dave Walter

Stage Crew- - - - - -Bill Matuska, Carl Thompson, Dan Hesselberg
Make-up - - - - - -Terri Hiles, Jean Schams, Karen Black
Technical Director- - - - - -Matt Lusk

DRAMA: Sectional Contests

Southern Section at Lake Geneva Badger

Franklin- - - - - A	Albany- - - - - B
Greenfield- - - - - A	Brookfield Central- - - - - B
Kenosha Tremper - - - - - A	Brookfield East - - - - - B
Mc Farland- - - - - A	Evansville SR - - - - - B
Milwaukee Hamilton SR - - - - - A	Hartford- - - - - B
Port Washington - - - - - A	Lodi- - - - - B
Wauaukee- - - - - A	Milwaukee James Madison - - - - - B
Whitefish Bay - - - - - A	Muscoda Riverdale - - - - - B
Whitewater- - - - - A	Sun Prairie - - - - - B
	Watertown - - - - - B

Central Section at UW-La Crosse and St Norbert College

Algoma- - - - - A	Adams-Friendship- - - - - B
De Pere East- - - - - A	De Pere West De Pere- - - - - B
Green Bay Bay Port- - - - - A	Gillett - - - - - B
Green Bay Preble- - - - - A	La Crosse Central - - - - - B
La Farge- - - - - A	Markesan- - - - - B
Montello- - - - - A	Mosinee - - - - - B
Neenah Armstrong- - - - - A	New Lisbon- - - - - B
Plymouth- - - - - A	Niagara - - - - - B
Pulaski - - - - - A	Oconto Falls- - - - - B
Richland Center - - - - - A	Onalaska- - - - - B
Ripon - - - - - A	Oneida Sacred Heart - - - - - B
Seymour - - - - - A	Suring- - - - - B
Tomahawk- - - - - A	Viroqua - - - - - B
Washington Island - - - - - A	Wrightstown - - - - - B
West Salem- - - - - A	
Winneconne- - - - - A	

Northern Section at UW-Eau Claire

Cadott- - - - - A	Ashland Ondossagon- - - - - B
Chippewa Falls SR - - - - - A	Luck- - - - - B
Drummond- - - - - A	Osceola - - - - - B
Hayward - - - - - A	Port Wing - - - - - B
Menomomie SR- - - - - A	
Rice Lake - - - - - A	
Superior SR - - - - - A	

DRAMA: District Contests

Eau Claire District at Loyal

Cadott- - - - - A	Colfax- - - - - B
Chippewa Falls SR - - - - - A	Loyal - - - - - B
Menomomie SR- - - - - A	Osseo-Fairchild - - - - - B
Rice Lake - - - - - A	Augusta - - - - - C

Green Bay District at De Pere

Algoma- - - - - A	Seymour - - - - - A
De Pere East- - - - - A	Suring- - - - - A
De Pere West De Pere- - - - - A	Washington Island - - - - - A
Gillett - - - - - A	Wrightstown - - - - - A
Green Bay Bay Port- - - - - A	Brussels Southern Door- - - - - B
Green Bay Preble- - - - - A	Florence- - - - - B
Niagara - - - - - A	Green Bay Ashwaubenon - - - - - B
Oconto Falls- - - - - A	Green Bay East- - - - - B
Oneida Sacred Heart - - - - - A	Wausaukee - - - - - B
Pulaski - - - - - A	

Kenosha District at New Berlin Eisenhower

Franklin- - - - - A
Greenfield- - - - - A
Kenosha Tremper - - - - - A
Milwaukee Hamilton SR - - - - - A

La Crosse District at UW-La Crosse

La Crosse Central - - - - - A	Brookwood - - - - - B
La Farge- - - - - A	Cashton - - - - - B
New Lisbon- - - - - A	Elroy Royall- - - - - B
Onalaska- - - - - A	La Crosse Logan - - - - - B
Richland Center - - - - - A	Melrose-Mindoro - - - - - B
Viroqua - - - - - A	Westby- - - - - B
West Salem- - - - - A	

Milwaukee District at Port Washington

Brookfield Central- - - - - A
Brookfield East - - - - - A
Hartford- - - - - A
Milwaukee James Madison - - - - - A
Port Washington - - - - - A
Whitefish Bay - - - - - A

Oshkosh District at Ripon

Markesan- - - - - A	Berlin- - - - - B
Montello- - - - - A	Campbellsport - - - - - B
Neenah Armstrong- - - - - A	Elkhart Lake- - - - - B
Plymouth- - - - - A	Mishicot- - - - - B
Ripon - - - - - A	Oshkosh West- - - - - B
Winneconne- - - - - A	Two Rivers Washington - - - - - B
	Westfield - - - - - B

Platteville District at UW-Platteville

Albany- - - - - A	Belmont - - - - - B
Muscoda Riverdale - - - - - A	Cassville - - - - - B
	Shullsburg- - - - - B

River Falls District at UW-River Falls

Luck- - - - - A	Ellsworth - - - - - B
Osceola - - - - - A	

Stevens Point District at Wittenberg-Biramwood

Adams-Friendship- - - - - A	Antigo- - - - - B
Mosinee - - - - - A	Athens- - - - - B
Tomahawk- - - - - A	Wabeno- - - - - C

Superior District at UW-Superior

Ashland Ondossagon- - - - - A	Port Wing - - - - - A
Drummond- - - - - A	Superior SR - - - - - A
Hayward - - - - - A	Park Falls- - - - - B

Whitewater District at UW-Whitewater

Evansville SR - - - - - A	Cambria-Friesland - - - - - B
Lodi- - - - - A	Cambridge - - - - - B
Mc Farland- - - - - A	Clinton - - - - - B
Sun Prairie - - - - - A	Columbus- - - - - B
Watertown - - - - - A	Johnson Creek - - - - - B
Waunakee- - - - - A	Lake Geneva Badger- - - - - B
Whitewater- - - - - A	

DRAMA: Summary of Participation, 1975-76

Eau Claire District
(44 Member Schools)

	<u>Subdistrict</u>	<u>District</u>	<u>Sectional</u>	<u>State</u>
Schools	11	8	4	4
Students	106	74	45	45
		<u>Ratings</u>	<u>Ratings</u>	<u>Ratings</u>
		4 A	4 A	2 A
		3 B		2 B
		1 C		

Green Bay District
(53 Member Schools)

	<u>Subdistrict</u>	<u>District</u>	<u>Sectional</u>	<u>State</u>
Schools	32	19	14	7
Students	352	209	154	149
		<u>Ratings</u>	<u>Ratings</u>	<u>Ratings</u>
		14 A	7 A	3 A
		5 B	7 B	4 B

Kenosha District
(43 Member Schools)

	<u>Subdistrict</u>	<u>District</u>	<u>Sectional</u>	<u>State</u>
Schools	12	6	4	4
Students	181	117	101	89
		<u>Ratings</u>	<u>Ratings</u>	<u>Ratings</u>
		4 A	4 A	3 A
		2 B		1 B

La Crosse District
(36 Member Schools)

	<u>Subdistrict</u>	<u>District</u>	<u>Sectional</u>	<u>State</u>
Schools	17	13	7	3
Students	97	74	49	28
		<u>Ratings</u>	<u>Ratings</u>	<u>Ratings</u>
		7 A	3 A	1 A
		6 B	4 B	2 B

Milwaukee District
(47 Member Schools)

	<u>Subdistrict</u>	<u>District</u>	<u>Sectional</u>	<u>State</u>
Schools	23	14	6	2
Students	522	356	196	116
		<u>Ratings</u>	<u>Ratings</u>	<u>Ratings</u>
		6 A	2 A	2 A
		8 B	4 B	

Oshkosh District
(52 Member Schools)

	<u>Subdistrict</u>	<u>District</u>	<u>Sectional</u>	<u>State</u>
Schools	17	13	6	5
Students	216	169	77	66
		<u>Ratings</u>	<u>Ratings</u>	<u>Ratings</u>
		6 A	5 A	2 A
		7 B	1 B	3 B

Platteville District
(38 Member Schools)

	<u>Subdistrict</u>	<u>District</u>	<u>Sectional</u>	<u>State</u>
Schools	5	5	2	
Students	37	37	12	
		<u>Ratings</u>	<u>Ratings</u>	<u>Ratings</u>
		2 A		
		3 B	2 B	

River Falls District
(28 Member Schools)

	<u>Subdistrict</u>	<u>District</u>	<u>Sectional</u>	<u>State</u>
Schools	4	3	2	
Students	42	34	19	
		<u>Ratings</u>	<u>Ratings</u>	<u>Ratings</u>
		2 A		
		1 B	2 B	

Stevens Point District
(53 Member Schools)

	<u>Subdistrict</u>	<u>District</u>	<u>Sectional</u>	<u>State</u>
Schools	20	6	3	1
Students	134	44	21	16
		<u>Ratings</u>	<u>Ratings</u>	<u>Ratings</u>
		3 A	1 A	
		2 B	2 B	1 B
		1 C		

Superior District
(24 Member Schools)

	<u>Subdistrict</u>	<u>District</u>	<u>Sectional</u>	<u>State</u>
Schools	12	6	5	3
Students	107	66	52	48
		<u>Ratings</u>	<u>Ratings</u>	<u>Ratings</u>
		5 A	3 A	
		1 B	2 B	3 B

Whitewater District
(53 Member Schools)

	<u>Subdistrict</u>	<u>District</u>	<u>Sectional</u>	<u>State</u>
Schools	17	13	7	3
Students	241	200	139	111
		<u>Ratings</u>	<u>Ratings</u>	<u>Ratings</u>
		7 A	3 A	2 A
		6 B	4 B	1 B

Totals - - - - - 471 Member Schools

	<u>Subdistrict</u>	<u>District</u>	<u>Sectional</u>	<u>State</u>
Schools	170	106	60	32
Students	2,035	1,380	865	668
		<u>Ratings</u>	<u>Ratings</u>	<u>Ratings</u>
		60 A	32 A	15 A
		44 B	28 B	17 B
		2 C		

PART IV: CALENDAR INFORMATION

March

6

Forensic Tournament, Homer de Long JR High School, Eau Claire. Contact Ken Thames.

PART V: PROFESSIONAL INTEREST

(NOTE: The following article was submitted by Professor Grace Walsh of University of Wisconsin-Eau Claire. It is printed here exactly as it was received. The WHSFA is grateful to Professor Walsh for her continuing interest.)

The Future of Forensics in Wisconsin
by Grace Walsh
Professor of Speech and Director of Forensics
University of Wisconsin-Eau Claire

Since I have had many opportunities to talk with students and coaches in Wisconsin, I think it is time to put in writing some of the problems and questions that concern all of us who are in this activity together.

We want ours to be the best association in the nation, but recent developments have led me to believe that it is time to review some of the things that are happening. I am specifically concerned about the state contest in Wisconsin as it is now conducted.

The time was when these experiences of going to the state were very thrilling experiences. We debated before the State Legislature. I remember the thrill of winning the state championship in declamation and delivering that speech in the State Assembly Chamber in Madison. I will always recall with pleasure the fact that Andrew Weaver, Gladys Borchers, and the famous Professor Kieffer were among the judges who heard us. The opportunities for students to get to know each other and to be house guests of various organizations on the university campus, the social events planned in connection with the contest, were all experiences to be treasured when we went to the state finals of the Wisconsin Forensic Association.

Pacing each other on the road to excellence is a great idea, but when so many are pacing, I cannot help but wonder whether this investment in coach and student time in our state contest is really worthwhile now. I think if I were a high school coach today, I would take a long look at this investment of money on one student to speak one time before one judge in the presence of one little group and then go home. What does it really mean? Is that 'A' at the state really worth much when there are so many involved? I believe in mass production. I think that speech training should go to all students, but I am convinced that the time has now arrived when this mass exodus of thousands of students to the state contest is detrimental to the best interests of the activity. It is too expensive. It is really not much different from the district. The names are scrambled a little and so another judge hears and comments.

How much better it would be if the student were exposed to more reactions to his performance and to a greater variety of competition. I know this cannot be handled with the numbers going to Madison now, but I think that I would consider that there are other tournament experiences more valuable to my students than going to these contests today. Now I have said it and I hope you do not think me a traitor to the association. The structure has become top-heavy and the experience is having little real value in forensics. Impressive numbers of students are involved, it is true, but

I am convinced that relatively few have an experience that is of very much significance. It is simply repetitious. Probably those they compete against may or may not be better than the ones they spoke before last time. So what does it amount to?

Such criticism is not valid unless there are suggestions about what to do about it. I believe that numbers could be reduced by the interjection of some tournament between the district and the state. That would help to cut numbers. That is one thing that could be done. I believe that the state contest itself might have another division in which it might be possible to engage in some sort of a ranked experience that would wind up with a certain number of students who are ranked as well as rated. I am not too sure how this could be worked out, but I have always believed that competition is a great motivator in speech and if the achievement is not significant, I doubt that we can justify the money we are spending in producing so many 'A' winners at state. I am not going into the statistics which the secretary's office could show has been the growth. What impresses me at the moment is that it seems to be meaning less and less as time goes on. I have taken no statistical survey, but I know I speak for many of the coaches who were former students of mine who come back to my office to tell me about their reaction and that of their students. Current dissatisfaction with the structure of the state forensic contest makes the need for change urgent.