

# W H S F A

WISCONSIN HIGH SCHOOL FORENSIC ASSOCIATION

"Serving students in theatre, debate and speech activities"

Vol. 18

October, 1996

No. 1

## STATE SPEECH FESTIVAL '97

The State Office has sent a time preference card for State Speech - 1997 to Speech coaches. The card must be returned to the State Office no later than October 31st. In November the cards will be divided into groups according to first preference. We will draw ninety (90) cards from each group. You will be notified which time you received. There are three things you should remember:

1. Fill out in order of preference with (1) being your first choice; (2) second choice, etc., **completing all five (5) choices.**

2. Mail ASAP to ensure it reaches us by October 31st.

Your cooperation in this matter is appreciated. Reminder - You are not guaranteed your chosen time period - there are scheduling limitations.

## WHSFA SPEECH ADJUDICATION

Speech Adjudication Workshops are being held around the State during the 1996-97 school year. A reminder that by the 1996-97 school year, **all judges at District level must be WHSFA certified!** Presently, each school must also provide a WHSFA certified judge for State. If you or your judges are not certified - now is the time!

If you are interested in attending any of the listed workshops and do not receive registration materials or you wish to host an Adjudicator Workshop - call the State Office at 608-882-6004.

Recertification for speech adjudicators is taking place now. The recertification notices have been sent. If your certification expires in 1996 or earlier and you did not receive notification, please contact the State Office. We have many returned letters because of address changes! There is no fee for recertification.

## WHSFA PUBLICATIONS

A new SPEECH HANDBOOK has been sent to all schools registered for membership in the WHSFA Senior Division. These handbooks were sent to the attention of the Speech Coach at each school.

\* Updated new pages were sent to each registered middle level school to add to the Middle Level Handbook

published last year. The book to be used for Extemporaneous Reading for 1997 was also included.

\* Eligibility-Registration, (ER) forms have been sent to registered Debate coaches and Theatre Directors. Important new information is available in all publications - please read carefully.

## SPEECH ADJUDICATION WORKSHOPS 1996-97\*

LOCATION	DATE	TIME
Arcadia High School	October 21, 1996 (Monday)	4:15 p.m. - 7:45 p.m.
Madison (WEAC Convention)	October 24, 1996 (Thursday)	1:30 p.m. - 4:30 p.m.
Niagara High School	October 26, 1996 (Saturday)	10:00 a.m. - 1:30 p.m.
Stanley-Boyd High School	October 28, 1996 (Monday)	4:15 p.m. - 7:30 p.m.
Prentice High School	October 29, 1996 (Tuesday)	4:30 p.m. - 8:00 p.m.
Pembine High School	November 6, 1996 (Wednesday)	4:30 p.m. - 8:00 p.m.
Neenah High School	November 7, 1996 (Thursday)	4:30 p.m. - 8:00 p.m.
WI Lutheran High School - Milwaukee	November 13, 1996 (Wednesday)	4:15 p.m. - 7:30 p.m.
St. Lawrence Seminary - Mt. Calvary	November 16, 1996 (Saturday)	9:00 a.m. - 12:30 p.m.
Greendale High School	December 7, 1996 (Saturday)	9:30 a.m. - 12:30 p.m.
Wauwatosa West High School	December 11, 1996 (Wednesday)	4:30 p.m. - 8:00 p.m.
Lancaster High School	January 11, 1997 (Saturday)	9:00 a.m. - 12:00 p.m.
James Madison H.S. - Milwaukee	January 16, 1997 (Thursday)	4:00 p.m. - 7:15 p.m.

\* As of October 1996

Executive Director.....J. Peter Shaw

NEWSLETTER  
Issued five times each school year. This is an official  
publication of Wisconsin High School Forensic Association.  
14 W. Main, Suite A Evansville, WI 53536  
Phone (608) 882-6004 Fax (608) 882-6661



14 W. Main, Suite A  
Evansville, WI 53536

WISCONSIN HIGH SCHOOL FORENSIC ASSOCIATION

NON PROFIT  
ORGANIZATION  
U.S. POSTAGE  
PAID  
Evansville, Wisconsin  
Permit No. 14

## 1996-97 MEMBERSHIP CARDS

Check with your business office or call the State Office to ensure that your 1996-97 registration card has been completed and returned to the State Office.

It is important that we have the correct name(s) of the personnel coaching Theatre, Debate, Speech and Middle

Level programs. Without these names, we cannot guarantee that important materials will reach the correct person.

New mailing lists are now being generated. If you have not already returned your completed registration card, please do so as soon as possible.

## 1996 WISCONSIN HIGH SCHOOL THEATRE FESTIVAL

Produced by:  
Wisconsin High School Forensic Association  
UW Madison Department of Continuing Education in the Arts  
Alliance for Wisconsin Theatre Education  
Hosted by:  
UW-Whitewater Department of Theatre/Dance

Celebrate Theatre!



November 21-22-23, 1996

UW-Whitewater

In cooperation with: WI Council of Theatre Chairs • WI Department of Public Instruction

## WHSFA BOARD OF CONTROL

The WHSFA Board of Control met on Wednesday, September 11, 1996, in Madison.

\* New board members: Dr. Carol Krause-Wisconsin Lutheran High School-Milwaukee (District 12/13) and James Paplham-Green Bay West High School (District 6) were welcomed.

\* Roger Klug was elected WHSFA Board Chair.

\* Roger Foegen was elected WHSFA Vice Chair.

\* Shaw reported for the Theatre Advisory Committee.

-- Board approved (for a 2-year trial period) a "feedback form" to be completed by Directors at the District level regarding the individual doing the oral evaluation of their performance.

-- UW-Whitewater will host the State Theatre Festival in November 1996 and UW-Stevens Point in 1997.

\* Kay Neal, Advisor in Debate, reported for the Debate Advisory Committee.

-- The Michigan Plan (now to be known as the Post District Qualifying Plan) was approved to become WHSFA Debate policy.

-- Approved policy changes/clarifications regarding emergency judging at the District and State Tournaments and strikes at the State level.

-- Lincoln/Douglas Debate Tournament will be held at State Speech, Saturday, April 12, 1997.

\* Michael Price, Advisor in Speech, reported for the Speech Advisory Committee. Board approval of the following.

-- wording change in Solo-Acting Rule #4 to: "The use of a single *stationary* chair is allowed."

-- rule clarification: "In all categories except Radio Speaking, a 30 second grace period will be allowed, after which one point will be deducted from that evaluation item dealing with rate.

-- new recommendation - regarding the Storytelling category: "For STATE participation the student will be allowed to select three (3) of the five (5) original topic areas and list chosen topics with one title and author (s) for each on a specific card."

-- the word **Average** (Number 3) will be changed to the word **Good** (Number 3) on all evaluation sheets.

-- Discussion of WHSFA State Speech Festival - April 17-18, 1998 at UW - Madison - unable to change this date (University decision) - will continue to work with WFCFA to resolve a potential conflict.

\* Margie Stone reported for the Middle Level Advisory Committee.

-- for a two (2) year trial period, GROUP INTERPRETATION will be divided into two sub-categories - "Play Acting and Readers Theatre" with a combined total limit of 10 entries per school.

-- edited the description of the Middle Level B+ - it will now read: "The performance was good enough to want to encourage the student, *but does not display the quality necessary to advance to the next level*".

\* Speech Adjudication Update:

-- WHSFA Certified Speech Adjudicators required at the **District** level for the 1996-1997 school year and **Subdistrict** level by 1999-2000 school year.

-- Speech Adjudication Workshops continue to be held around the state.

\* Subdistrict/District Speech Festival -- Board re-emphasized that each participant at subdistrict and district WHSFA Speech Festivals are to participate in three rounds.

-- established new policy statement: "All students must participate in three rounds at subdistrict and district, unless permission has been granted by the District Chair/Host in an emergency situation."

## WHSFA MIDDLE LEVEL FESTIVAL SITES

Level I and Level II festivals will be held January-March 1997. More sites are needed!! Please consider hosting a Festival. The Association reimburses you for expenses incurred while hosting a festival. Please call the State Office 608-882-6004 if you are willing to serve as host! A listing of 1997 Festival sites was included with updated insert pages for the Middle Level Handbook.

## NATIONAL FEDERATION MEETING

Detroit was the site of the National Federation of State High School Associations meeting on August 9-11, 1996. WHSFA Executive Director J. Peter Shaw was the Wisconsin representative.

The following five problem areas were chosen for your consideration in regard to the 1997-98 debate season:

### POLITICAL REFORM RIGHT TO PRIVACY FREEDOM OF SPEECH THE UNITED NATIONS RENEWABLE ENERGY

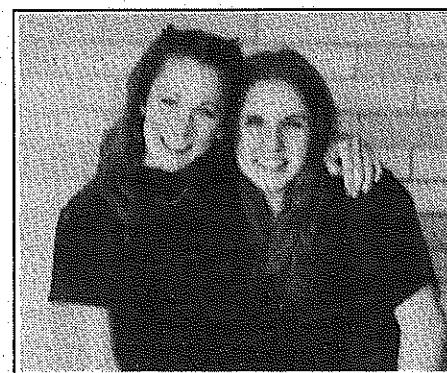
A ballot for specific resolutions was mailed to schools registered in Debate for study and consideration. These ballots are due to the State Office by October 31st. The two areas receiving the lowest totals will be placed on a second ballot to be mailed at a later date.

## IMPORTANT DATES

October 26  
Latest date for WHSFA District Theatre

November 8-9  
WHSFA Sectional Theatre

November 22-23  
WHSFA State Theatre (UW-Whitewater)



These students from Viroqua High School have each earned four consecutive "Critics Choice Award" at the WHSFA State Speech Festival. Melanie Buhr (left) was awarded a "25" in the following categories: 9-Group Interp, 10-Farrago, 11-Farrago, 12-Play Acting. Emily Mueller's (right) "25s" were in 9-Poetry, 10-Solo Acting, 11-Storytelling, 12-Solo Acting. These students were coached by Sherry Getter - Congratulations to all!

## WHSFA ELECTION RESULTS

The following have been re-elected to the WHSFA Board of Control for 3-year terms:  
District 9 - Orin Mueller - Fond du Lac Goodrich High School  
District 10 - Sam Jonas, Lancaster High School  
Section II (District 2, 5, 6) Chris Verges, Oconto Falls High School

Elected to an **Advisory Committee** for two year terms are:

### THEATRE

Section I (District 1, 3, 4) Craig Lewis, Hudson High School  
Section V (District 11, 14) Chuck Malone, Waukesha West High School

### DEBATE

Section II (District 2, 5, 6) Donna Frenzel, Wisconsin Rapids Lincoln High School  
Section III (District 7, 8, 10) Jim Sauer, LaCrosse Central High School  
Section IV (District 9, 12/13) Bill McBride, Neenah Senior High School  
Doris Sexton, West Bend East High School

### SPEECH

Section I (District 1, 3, 4) Sandy Hermundson, St. Croix Central High School (appointed)  
Section III (District 7, 8, 10) Toni Johnson, Arcadia High School  
Section V (District 11, 14) Sharon Sharko, Greendale High School

*Welcome to all!*

## NEW WHSFA BOARD MEMBERS

We welcome two new members to the WHSFA Board of Control. James Paplham, a teacher from Green Bay West High School, is the newly elected District 6 Chair. The newly elected District 12/13 Chair is Carol Krause, a teacher from Wisconsin Lutheran High School - Milwaukee.

*Welcome to you both!! Your willingness to serve is greatly appreciated.*

## THANK YOU

WHSFA wishes to extend a "Thank You" to former Board of Control members Don Maslinski-Ashwaubenon High School (District 6) and John Washbush - Hamilton - Sussex High school (District 12/13). Your involvement in WHSFA activities has been much appreciated!!

## SPEECH ADVISORY COMMITTEE MEETING

*Dorothy Berg*

The summer meeting of the WHSFA Speech Advisory Committee occurred on June 6 at the Petro Center near Portage. Attending were Dorothy Berg, Section II; Toni Johnson, Section III; Jim Kocovsky, Section IV; Craig Lehnerr and Sharon Sharko, Section V; J. Peter Shaw and Mary Mead from the State Office and Advisor to Speech Michael Price - Marquette University. The meeting was to determine the topics for Moments in History, Public Address, Special Occasion Speeches and Storytelling.

Letters of concern from member coaches were also discussed and then distributed to committee members according to Section. Each letter was responded to and a response copy sent to the State Office for future reference.

Some items of concerns were: handicapped students, signing for deaf, time limits and enforcement, length of categories, judging interpretation, appropriateness of material in various categories, student dress, smoking policy and State Speech Festival. Contact your Advisory Committee member for information for these items and any other concerns you may have.

We shared WHSFA concerns and ideas with the WFCFA representative, David Loos, who indicated a mutual willingness to continue to work cooperatively for the benefit of all students.

All recommendations are brought to the WHSFA Board of Control meeting for their discussion and enactment. This board meets twice a year to make decisions concerning the association.

The Speech Advisory Committee meets as necessary to conduct association business. They also help with State Speech Festival.