

PRESORTED STANDARD
NON PROFIT
PERMIT NO. 14
EVANSVILLE, WI 53536



Rio High School



Oak Creek High School



Park Falls High School

2000-2002 WHSFA TWO-YEAR CALENDAR

Subdistrict dates and the dates for District Debate, Theatre, and Speech are the latest dates the events may be held.
Dates for Sectional Theatre and all State Senior Division events are firm.

	<u>Theatre (2000)</u>	<u>Debate (2001)</u>	<u>Speech (2001)</u>	<u>Middle Level Division (2001)</u>
2000-2001				
Subdistrict	Oct. 14		February 24	Feb.10, Level I
District	Oct. 21	Jan. 13	March 10	(Latest Date)
Sectional	Nov. 3-4			
State	Nov. 17-18 (UW-Whitewater)	Jan. 25-27 (4 & 2 SP) (UW-Oshkosh)	April 6-7 (UW-Madison)	Mar. 3, Level II (Latest Date)
Board Meetings	Sep. 13, 2000 (Madison) May 3-4, 2001 (WI Dells)		Thanksgiving Easter	Nov. 23, 2000 April 15, 2001
	<u>Theatre (2001)</u>	<u>Debate (2002)</u>	<u>Speech (2002)</u>	<u>Middle Level Division (2002)</u>
2001-2002				
Subdistrict	Oct. 13		March 2	Feb.9, Level I
District	Oct. 20	Jan. 12	March 16	(Latest Date)
Sectional	Nov. 2-3			
State	Nov. 16-17 (UW-Stevens Point)	Jan. 24-26 (4 & 2 SP) (UW-Oshkosh)	April 12-13 (UW-Madison)	Mar. 2, Level II (Latest Date)
Board Meetings	Sep. 12, 2001 (Madison) May 2-3, 2002		Thanksgiving Easter	Nov. 22, 2001 March 31, 2002



WISCONSIN HIGH SCHOOL FORENSIC ASSOCIATION
10 East Main Street
Evansville, WI 53536

NEWSLETTER
Issued five times each school year. This is an official
publication of Wisconsin High School Forensic Association.
10 East Main Street, Evansville, WI 53536
Phone (608) 882-6004 Fax (608) 882-6661
e-mail: whsfa@inwave.com
Executive Director..... J. Peter Shaw

WHSFA

WISCONSIN HIGH SCHOOL FORENSIC ASSOCIATION

"Serving students since 1895"

Theatre • Debate • Speech

Vol. 21

May, 2000

No. 5

WISCONSIN HIGH SCHOOL FORENSIC ASSOCIATION

"EXCELLENCE IN SPEECH - 2000"

- District 2** - Niagara - Terry Grippen Speech Coach
District 3 - Baldwin-Woodville - Roxi Wakeen/Jane Thompson/Tina Fern, Speech Coaches
District 4 - Rice Lake - Gail Gifford, Speech Coach
District 5 - Pittsville - Dorothy Berg, Speech Coach
District 6 - Preble - Green Bay - Carol Miller, Speech Coach
Pulaski - Diane Sabo, Speech Coach
District 8 - DeForest - Joe CaPaul, Speech Coach
DodgeLand - Juneau - Elizabeth Brieman, Speech Coach
Lodi - Mark Kohl, Speech Coach
Waunakee - Rick Braun, Speech Coach
District 9 - Chilton - Fred Klaeser, Speech Coach
Winnebago Lutheran Academy - Fond du Lac - David Lauber, Speech Coach
Lomira - Bonnie Tagliapietra/Claudia Whitty, Speech Coaches
St. Lawrence Seminary - Mt. Calvary - Rev. Gary J. Wegner, Speech Coach
Oshkosh West - Tom Lynch, Speech Coach
District 10 - Cassville - Donna Williams, Speech Coach
Cuba City - Laura Wilberding, Speech Coach
Darlington - Leona Havens, Speech Coach
Iowa-Grant - Livingston - Shirley Zimmer, Speech Coach
District 11 - Monroe - Todd A. Trampe, Speech Coach
District 12 - Wisconsin Lutheran - Milwaukee - Carol Krause, Speech Coach
District 14 - Greendale - Sharon Sharko/Dale Shikowski, Speech Coaches
Whitnall - Greenfield - Jennie Jarger, Speech Coach

These schools, representing the top 5% of the 383 schools participating at the WHSFA State Speech Festival, held April 14-15, 2000, at UW-Madison, were honored with the WHSFA "Excellence in Speech Award". Each entry earned points for their school. Points are awarded as follows: Gold - Critics Choice (4 points); Silver - All State (3 points); Bronze - Finalist (2 points); Small Bronze - Achievement (1 point).

The schools in the top 5% for 2000 earned between 72 and 90 team points.

ADVISORY COMMITTEES TO MEET

The **Speech** Advisory Committee will meet on Friday, June 2, 2000, the **Debate** Advisory Committee will meet Thursday, June 22, 2000, the **Theatre** Advisory Committee will meet on Thursday, June 29, 2000 and the **Middle Level** Advisory Committee will meet on Friday, July 14, 2000. If you have any questions or concerns you wish to have addressed by any of these committees, please contact the State Office at 608/882-6004. Committee members may also be contacted - names and telephone numbers are listed in the current Speech/Theatre/Debate/Middle Level handbooks/addendum.

THEATRE CAMP

The UW-Whitewater Theatre Camp, now in its 20th year, will be held July 23-29, 2000. It provides an excellent opportunity for high school students (entering grades 10-12) with a strong interest in theatre to spend a week learning and working in a modern university theatre facility. The camp has two areas of concentration - acting and design/technical theatre. The daily schedule provides classes in the morning and work on scenes in the afternoons and evenings. The scenes are presented in the Theatre/Dance Department's Barnett Theatre at the end of the week.

The UW-Whitewater Theatre Camp is directed by Dr. Charles "Skip" Grover, theatre advisor to the Wisconsin High School Forensic Association. Dr. Grover is also recognized as one of the state's leaders in theatre education and has a long-standing commitment to high school theatre. Those interested in registering for the UW-Whitewater Theatre Camp should contact Continuing Education Services by phoning 1-800-622-0350 or by email at <cesevents@mail.uww.edu>. The total fee is \$310.00 and the application deadline is July 7, 2000.

SPEECH LOSES ADVOCATE AND FRIEND

Grace Walsh, long-time Wisconsin speech teacher and coach, passed away on April 24, 2000 in Eau Claire at the age of 89. Grace's interest in WHSFA forensics began early as a high school student in 1927. Her involvement in forensics continued as a secondary and high school teacher and eventually a professor of speech at UW-Eau Claire, a position she held for 36 years. In 1982 WHSFA honored Grace by establishing the traveling Grace Walsh Award for Best Negative and Best Affirmative team at State Debate. WHSFA pays tribute to the great lady of Wisconsin forensics.

Celebrate Theatre 2000!

Beginning Thursday evening, November 16, 2000, with a special showcase performance and continuing into Friday and Saturday, November 17th and 18th, the 2000 Wisconsin High School Theatre Festival will once again explore the wonderful world of theatre. Featured are high school performances, workshops, informances, and showcased productions. This entire festival promises to provide fun and fantasy as well as educational benefits for students, directors and anyone wishing to learn more about the dramatic arts.

UW-Whitewater will serve as our festival host for *Celebrate Theatre 2000!* The Center of the Arts will be our scheduled area utilizing the Young Auditorium, two theatre performance areas and multiple rooms for hands-on student and teacher oriented workshops.

NOW is the time to finalize plans for the Wisconsin High School Theatre Festival!

PLAN to enter a play in the WHSFA theatre series - culminating with participation in the Wisconsin High School Theatre Festival either

by advancing through district and sectional festivals or planning to register and participate with your cast and crew as the culminating activity.

RESERVE rooms for you and your students. Whitewater area motels are reserving room blocks for the festival. Mention the Wisconsin High School Theatre Festival for special rates.

SUGGEST possible workshops and/or workshop leaders that you would like to see become a part of the 2000 Festival. Contact the State Office.

SCHEDULE November 16-17-18, 2000 on your calendar for the Wisconsin High School Theatre Festival. Perhaps fund-raising activities could be scheduled to help defray expenses.

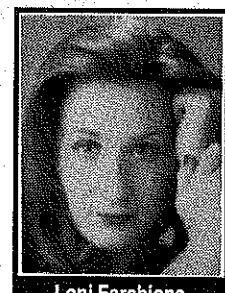
QUESTIONS? Contact the WHSFA State Office at 608/882-6004.

ENJOY the weekend of November 16-17-18, 2000 at UW-Whitewater by participating in the WISCONSIN HIGH SCHOOL THEATRE FESTIVAL. *CELEBRATE THEATRE 2000!*

Congratulations!!

The following seniors earned their fourth consecutive "Critics Choice Award" at the WHSFA State Speech Festival.

Held
April 14-15, 2000 at
UW-Madison.



Loni Farchione
Franklin H.S.
Prose - Reading



Krissy Stoor
Monroe H.S.
Oratory



Jaclyn Wakeen
Baldwin-Woodville H.S.
Solo Acting

Bravo! - WHSFA salutes these students for their outstanding achievement!

THEATRE - DEBATE - SPEECH INSTITUTES - WORKSHOPS - CAMPS

- > **THEATRE CAMP**
UW-Whitewater, July 23-29, 2000
Application deadline is July 7, 2000
Contact Continuing Education Services at 1-800-622-0350
or email: cesevents@mail.uww.edu
- > **REDHAWK FORENSICS INSTITUTE**
Ripon College, July 23-29, 2000
Contact Jody Roy at 920/748-8712
or email: royj@ripon.edu
- > **DEBATE INSTITUTES**
Marquette University
July 22-August 5, 2000
Call 414/288-6359 or email Alex Inman at: ainman@universitylake.org

- > **FORENSICS WORKSHOP**
UW-Whitewater, July 30 - August 4, 2000
Call 1-800-622-0350
or email: cesevents@mail.uww.edu
- > **SUMMER THEATRE ACADEMY 2000**
Marquette University, June 18-July 21
Call 414/288-7505
- > **CTM SUMMER DRAMA SCHOOL**
Madison - Call 608/255-2080

•• FOR TEACHERS ••

- > **RIPON FORENSICS COACHES CLINIC**
Ripon College, July 27-29, 2000
Contact Jody Roy at 920/748-8712
or email: royj@ripon.edu

WHSFA REMEMBERING...

20 Years Ago - May, 1980

WHSFA debate schools have chosen to debate consumer product safety during the 1980-81 school year. The exact wording of the proposition is - *Resolved: That the federal government should initiate and enforce safety guarantees on consumer goods.*

15 Years Ago - May, 1985

The Board accepted the Theatre Advisory Committee's recommendation renaming the State Awards from "Finalist" to "All State" and the "All State" to "Critics Choice". It was generally felt that these terms more adequately describes what each award represents.

10 Years Ago - May, 1990

Junior Division Update - Bob Klotzsky, Little Chute, and Wallace Hoffman, Green Bay, will continue as members of the Junior Advisory Committee for another 2 year term. The category of "News Reporting" is added to the Junior Division.

5 Years Ago - May, 1995

Two play acting groups have been chosen for performance at the Madison International Youth Arts Festival: "The Miracle Worker" from DeForest High School, directed by Janis Williams and featuring Val Erstad and Jennifer Nie. "The Taming of the Shrew" from Oshkosh West High School, directed by Tom Lynch and featuring Heather Smith and Peter McCain. They will be performing in the "Crossroads" at the Madison Civic Center at 11:00 a.m. on Saturday, June 17, 1995.

SPEECH ADJUDICATION WORKSHOPS

Hosting a WHSFA Adjudication workshop is easy and fun - and all hosting schools may send one participant at no charge. We take care of all registration and instruction - you simply provide a room, a chalkboard, VCR and monitor. If you are interested in hosting a workshop at your school, please select a date and time, then contact the State Office at 608/882-6004. Becoming a Certified Speech Adjudicator is accomplished by successfully completing/passing the Speech Orientation Program.

A reminder - WHSFA **certified judges** are required at the **Subdistrict, District and State** level. If you are planning to use colleagues or non-school personnel as judges, please make sure that they have current WHSFA adjudication certification.

WHSFA 2000 STATE SPEECH FESTIVAL RESULTS

District	# of Schools	# of Entries	# of Actual Students	Critics Choice (Gold)	All State (Silver)	Finalist (Bronze)	Achievement (Small Bronze)	# of No Shows	Excellence in Speech Award
1	23	234	395	47	82	69	24	12	0
2	29	297	449	72	128	77	16	4	1
3	27	271	399	81	122	55	11	2	1
4	26	236	349	54	104	63	13	2	1
5	35	407	584	102	135	141	22	7	1
6	27	269	366	83	109	58	11	8	2
7	34	272	398	73	116	71	7	5	0
8	33	424	551	123	156	118	15	12	4
9	30	423	560	132	160	98	17	16	5
10	32	341	481	104	144	74	14	5	4
11	30	301	389	85	116	72	22	6	1
12/13	25	283	300	67	102	70	17	27	1
14	32	401	469	118	150	96	20	17	2
TOTALS	383	4,159	5,690	1,141	1,624	1,062	209	123	23
PERCENTAGE				27.5%	39%	25.5%	5%	3%	5% (includes ties)

WHSFA MEMBERSHIP REGISTRATION CARDS

The 2000-2001 WHSFA membership registration cards have been sent to principals of all member schools - Middle Level and Senior Level Division. Annual dues will remain the same for the 2000-2001 school year and are payable on or before September 15th. The State Office would appreciate the registration cards returned, with personnel listed, as soon as possible. This will help us get handbooks/addendum and other important material which are mailed in late summer/early fall to the correct people. Thank you for your help.

!! Congratulations !!

J. PETER SHAW INDUCTED INTO WFCA HALL OF FAME

The Wisconsin Forensic Coaches Association is pleased to announce that J. Peter Shaw, Executive Director of the Wisconsin High School Forensic Association was unanimously selected to receive the WFCA Hall of Fame Award. President, Fr. Gary Wegner, presented the organization's most prestigious award to Shaw, on May 4, 2000 in Neenah, thanking him for his dedication to promoting speech opportunities for Wisconsin students and for his work in fostering the spirit of cooperation between the WHSFA and the WFCA.

SPEECH QUESTIONNAIRE

A questionnaire for all speech coaches was recently sent out from the State Office. Please complete and return the self-mailer as soon as possible. Results and comments will be discussed at the WHSFA Speech Advisory Committee meeting on June 2, 2000.

ATTENTION COACHES THEATRE-DEBATE-SPEECH

Be sure to remind your Principal or Athletic Director to include your name and extension number in the directory information form they receive from WIAA.

JOB OPPORTUNITY

Lincoln High School in Wisconsin Rapids has an opening for a person who is Wisconsin certified to teach secondary English and theatre. Successful candidates should have significant experience in directing and/or technical theatre.

Lincoln High School located in the center of Wisconsin and is a 10 - 12 senior high school of approximately 1,600 students. It will open a new \$6.8 million performing arts center in September.

For more information, please contact Ted Moskonasas <moskonas@wctc.net>. Time is of the essence as interviewing will begin soon.

2000 STATE SPEECH T-SHIRTS

The 2000 State Speech T-shirts were a great hit - we sold out and needed to reorder. A few are still available - contact the State Office at 608/882-6004. \$10.00 each - we will mail - XXL only - while supply lasts.