

TABLE OF CONTENTS

Calendar	Cover
Letter from the Secretary-Treasurer	2
Invitation to Membership	3
For the Beginning Forensic Coach, by A. C. Jone, Chm. Board of Control	4
Awards Given in State Contests 1948-49	5
Part I—General Rules and Regulations	6
Constitution	6
Rules	9
General Information	14
Part II—For Your Professional Growth	
Debate: A Combined Operation, by H. L. Ewbank Jr.	17
References for Drama Teachers	20
References for Discussion and Debate	20
Suggested Reference Materials	21
Speech Materials for Teachers	21
Publishers of Speech Materials	21
Round Out Your Drama Program, by H. H. Brockhaus	22
Helpful Articles in Last Year's News Letters	23
Mimeographed Articles Sent Out Last Year	23
Part III—Annual Report	24
Speech Institute Map	25
State Drama Contest	26
Summary of Sectional Drama Contest Reports	33
Summary of District Drama Contest Reports	34
State Debate Contest	36
Summary of Sectional Debate Contest Reports	42
Summary of District Debate Contest Reports	43
State Speech Contest	46
Summary of District Speech Contest Reports	70
Financial Statement	72
Interpreting Our Financial Report	73
Membership Map	74
Membership List	75
For the Record	84
Part IV—Correlating Speech and Drama Programs	86
The National Forensic League	86
The American Legion High School Oratorical Contest	87
Future Farmers of America Public Speaking Contest	87
National Thespian Society	87

PRINCIPAL'S COPY

WISCONSIN HIGH SCHOOL FORENSIC
ASSOCIATION NEWS LETTER*"Not to defeat each other, but to pace one another on the road to excellence."*

Vol. XXI MADISON, WISCONSIN, SEPTEMBER 1949 No. 1
 WISCONSIN HIGH SCHOOL FORENSIC ASSOCIATION
 AFFILIATED WITH
 BUREAU OF INFORMATION AND PROGRAM SERVICES
 UNIVERSITY OF WISCONSIN EXTENSION DIVISION
 1327 University Avenue, Madison 5, Wis.
 Phone 5-3311 Ext. 4233

DEBATE QUESTION: *Resolved:* That the president of the United States should be elected by the direct vote of the people.

1949—CALENDAR—1950

Latest Dates for Contests	Drama	Debate	Speech
League Contests	Nov. 12		March 18
District Contests	Nov. 19	Jan. 21	April 1
Sectional Contests	Dec. 3	Feb. 4	
State Contests	Dec. 10	Feb. 25*	April 15

* Note change from date previously announced.

Speech Institute Dates

Stevens Point	State Teachers College	September 24
Ashland	High School	October 1
Eau Claire	State Teachers College	October 8
Platteville	State Teachers College	October 15
Whitewater	State Teachers College	October 29
Oshkosh	State Teachers College	November 12

Board of Control Meeting

Schroeder Hotel, Wednesday, November 2, Milwaukee

Annual Meeting of Association (Coaches and Principals please attend)

Pfister Hotel, Friday, November 4, 4:00 to 5:00 P. M.

BOARD OF CONTROL

Northern Section	Central Section	Southern Section
H. W. MATHISON*	W. G. SCHMIDT	A. J. KRIEWALD
Eau Claire	Kaukauna	Platteville
Eau Claire District	La Crosse District	Milwaukee District
C. L. DODGE	K. A. CURRAN	N. E. COLBY
Mondovi	Cashton	West Bend
River Falls District	Oshkosh District	Platteville District
DARYL K. LIEN	H. H. HELBLE	EVERETT J. HILL
Amery	Appleton	South Wayne
Superior District	Stevens Point District	Whitewater District
H. F. CONNORS	A. MOLDENHAUER	A. C. JONES
Hurley	Mosinee	Verona

* Deceased.

A. C. JONES, *Chairman*
 Verona
 PROFESSOR A. T. WEAVER
 Advisor in Speech
 University of Wis.

ROBERT H. SCHACHT, *Sec'y-Treas.*
 University Extension Division
 PROFESSOR ROBERT E. GARD
 Advisor in Dramatics
 University of Wis.

LETTER FROM THE SECRETARY-TREASURER

DEAR FRIENDS:

Some of you who read this may be full-time teachers of speech and dramatics in our larger high schools. Others of you will be mathematics or science teachers in small communities who have been asked to direct the school play, work with the debate team, or coach individuals in forensics. The Wisconsin High School Forensic Association exists for both such groups and for the many other combinations that appear between the examples mentioned above.

Over four hundred high schools joined this association last year. We hope that the services we have provided in the form of institutes, contest organization, and printed materials helped you enrich the school experiences of your boys and girls.

The ultimate potentialities of the association, however, depend upon the active participation of all of its members. Such participation may be evidenced in part by

1. Taking part in the election of board members each fall.
2. Attending the annual meeting of the association during teacher's convention. This year the annual meeting will be held Friday, November 4, at 4:00 P. M. at the Hotel Pfister, Milwaukee.
3. Sending suggestions and criticisms to your district or sectional chairman or to the secretary-treasurer.
4. Responding to various requests that are made of members from time to time; e.g. for suggestions for the APPROVED PLAY LIST.

The state office is not the association. The twelve members of the Board of Control are not the association. The Wisconsin High School Forensic Association is really *you*, all of the four hundred or more members who have joined together so that we may all better realize our common goals.

Be assured that the Board of Control solicits your suggestions as to how the association may best serve your needs and those of the young people with whom you work.

Please familiarize yourself with the contents of this bulletin. Keep it as a reference throughout the coming year. Each member school is receiving two copies—one for the principal, and one for the speech teacher.

Sincerely yours,

ROBERT H. SCHACHT, *Secretary-Treasurer, WHSFA.*

See Back Cover for Table of Contents

INVITATION TO MEMBERSHIP

Every school in Wisconsin, which offers school work at the 9th, 10th, 11th, or 12th grade level, is eligible to join the association. The primary objective of the association is to provide training and experience in the various forms of speech. To attain these objectives the association conducts a three-fold program.

1. With the cooperation of a high school or state teachers college it offers in various parts of the state from four to six one-day speech institutes in which intensive instruction is offered directly to students and teachers. Last year more than 1888 students and teachers from 111 schools attended these institutes.
2. It provides the channels for inter-school contests in one-act plays, in debate, and in the individual speech activities of oratory, declamation, and extemporaneous reading and speaking.
3. It provides helps to teachers in the form of lists of plays, lists of books on the techniques of teaching speech, and sources of materials. Through specialists at the university it strives to answer the many questions rising in the conduct of speech training programs.

The association is managed by a board of control of twelve men—nine high school principals and three speech coaches,—under policies and rules prescribed by the board and by the member schools at the annual meeting. The secretary-treasurer is employed and paid by the University Extension Division, which also provides the necessary clerical help and office space.

For administrative purposes, the state is divided into nine districts, in each of which one member of the board of control serves as the district chairman. The nine districts are grouped into three sections, each under a sectional chairman who is also a member of the board of control.

The annual dues of the association are as follows:

- \$ 5.00 for schools with enrollment of 149 or less
- 7.50 for schools with enrollment of 150 to 349
- 10.00 for schools with enrollment of 350 or more

The annual dues are payable on or before December 15th each year. (In special cases the secretary-treasurer is authorized to accept dues after this date.) The membership year corresponds to the regular school year.

We hope that the activities offered by the association provide an educational program in which your school will participate this year. Address correspondence to Wisconsin High School Forensic Association, 1327 University Avenue, Madison 5, Wis.

FOR THE BEGINNING FORENSIC COACH

By A. C. Jones, Chairman, Board of Control

To aid the beginning forensic coach and incidentally perhaps lighten the correspondence between principals and coaches and the district chairmen and state office, our secretary has requested that I write a brief article for this News Letter which might tend to achieve these ends.

Two copies of this News Letter are mailed to each member school, one marked "Coach's Copy", and the other "Principal's Copy". In my opinion the most useful bit of advice I can extend to the Wisconsin High School Forensic coach who has not learned his way around through the maze of the state's forensic activities is to get hold of, study, and hang on to his copy of the September News Letter and then review it as questions arise. It contains most of the information you need—the program, dates, and rules of administration and conduct of the various activities of the program. Just how you are to get possession of it to read this article in case your principal to whom it is mailed fails to deliver it to you, I don't know, unless he finds time between his countless September duties to read this and then takes the hint. Subsequent issues of the News Letter in November, February, and May will also prove very helpful. A copy of them will be sent you via your principal. They will contain up-to-the-minute information about that portion of the year's program yet to come.

The association sponsors four types of activity. (1) Drama (one-act play) in the fall, (2) debate in the mid-year, (3) speech (popularly termed forensic activities) in the spring, and (4) speech institutes scattered through the fall. The first three are of contest nature; they start in the local school and work on up through league, district, and section to the state contest or tournament. In debate there are no league tournaments and in speech there are no sectional contests. There may be no league tournaments in drama in some districts, depending on the number of schools which register.

There are nine districts, each with a chairman, and three sections, each with a chairman. See the front cover of the News Letter for names of districts and sections and their chairmen. Also consult the membership map on page 74 of this News Letter to determine the district to which your school has been assigned. Your district chairman and his committee are responsible for assigning your school to a league and also for the district program. In case you feel you should have had information from your chairman about your league or district programs, first consult your principal and then your district chairman. The administration of the local and league contests is left, within the general rules, to the local school and to the member schools of the league.

A few brief tips:

1. Get hold of your copy of all four News Letters
2. Consult your principal before taking any further steps
3. Consult your league chairman about league contests
4. Consult your district chairman about district contests
5. Consult your sectional chairman about sectional contests
6. Consult the association chairman about state contests and when all other sources fail
7. In case you plan to enter the dramatic contests, register your play, taken from the approved list, a copy of which should be in the hands of your principal, by October 15th.
8. Check the News Letter for announcements of speech institutes which are administered directly by the state secretary and the host school to determine which one you and your students should attend
9. Attend the annual meeting of the association in Milwaukee at the time of the state teachers' convention.

Finally, keep your chin up with the conviction that you are working with the finest youth in your school and with a program that has possibilities for doing much for them.

AWARDS GIVEN IN STATE CONTESTS

Drama

- 37 individual gold medals—4 team banners were given "A" winners
- 67 individual silver medals—8 certificates of merit for the casts were given

Debate

- 12 individual gold medals—3 team banners were given first place winners
- 16 individual silver medals—4 certificates of merit for teams given second place winners
- 16 individual bronze medals—4 certificates of merit for teams given third place winners

Speech

- 148 individual gold medals
- 189 individual silver medals
- 122 individual white ribbons

Part I

GENERAL RULES AND REGULATIONS

CONSTITUTION

Revision adopted November 7, 1947

Article I. Name

The name of this organization shall be the Wisconsin High School Forensic Association.

Article II. Purpose

The purposes of this organization shall be

- to promote forensic activities in the high schools of Wisconsin
- to stimulate an interest in dramatics, debate, and other forms of speech work
- to improve the quality of high school speech work
- to provide channels for interschool activity in forensics.

Article III. Membership

Section 1. Any public or private high school in Wisconsin may become a member by making written application to the secretary of the Board of Control and paying the annual dues.

Section 2. Any public high school in upper Michigan will be admitted to membership by making written application to the Secretary of the Board of Control and paying the annual dues, provided:

- its application is approved by a majority of the member schools in the district to which such school requests to be assigned.
- membership of such applicant be limited to affiliation to one state organization.
- the application has the approval of the Michigan High School Forensic Association Council.

Section 3. The annual dues shall be:

- \$ 5.00 for schools with enrollment to 149
- 7.50 for schools with enrollment from 150 to 349
- 10.00 for schools with enrollment of 350 or more

The membership year shall be from September 1 to August 31.

Article IV. Administration

Section 1. Officers

- The officers of the Association shall be the nine district chairmen and the three sectional chairmen. These twelve officers shall be the Board of Control of the Association.
- The officers of the Board of Control shall be a chairman and a secretary-treasurer.

- The chairman shall be elected annually by the Board of Control for a term of one year.
- The secretary-treasurer shall be the Director of the Bureau of Information and Program Services, of the Extension Division of the University of Wisconsin. The secretary-treasurer shall be the principal administrative officer of the Association.

Section 2. Board of Control

- The affairs of the Association shall be administered by the Board of Control.
- The district chairmen shall be school administrators, elected by the member schools of their respective districts. Each district chairman shall be responsible for conducting forensic affairs of his district in accordance with association regulations. Each district chairman shall make reports of the district contests to the secretary-treasurer.
- Each district chairman shall organize for his district an executive committee, consisting of:
 - one representative from the State Teachers' College
 - one high school principal
 - two coaches or teachers of public speaking
- The three sectional chairmen shall be speech coaches elected by the member schools of their respective sections. Each sectional chairman shall be responsible for conducting forensic affairs of his section. Each sectional chairman shall report promptly, the results of his sectional contests to the secretary-treasurer.
- The term of office of the members of the Board shall be three years, or until a successor is elected. The term of office of members of the Board of Control shall begin on the date on which the election is completed.
- The office of chairman of any district or section shall be declared vacated when the incumbent of that office
 - (1) moves to another district or section
 - (2) leaves the profession, or
 - (3) absents himself from two consecutive board meetings without a reason acceptable to a majority of the Board.
- In case of a vacancy in district or sectional chairmanship the remaining members of the Board of Control shall appoint a chairman to serve until the next annual election.
- The duties of the Board of Control shall be to direct generally all the affairs of the Association and to enact the rules which shall govern the activities of the Association.
- The Board shall meet annually as soon as convenient after the annual election of district and sectional chairmen. Seven members of the Board shall constitute a quorum.
- Special meetings of the Board may be called by the chairman, or by the secretary-treasurer or must be called by the secretary-treasurer upon request of any five members of the Board of Control.

Section 3. Districts, Sections and Leagues

- a. For administrative purposes the state shall be divided into the sections and districts as follows:

<i>Northern Section</i>	<i>Central Section</i>	<i>Southern Section</i>
Eau Claire District	La Crosse District	Milwaukee District
River Falls District	Oshkosh District	Platteville District
Superior District	Stevens Pt. Dis.	Whitewater District

- b. Any school may transfer from one district to another by securing written approval from the secretary-treasurer and from the chairmen of the two districts concerned.
- c. Any three or more schools within a district, or any two schools having a combined enrollment of 800 or more pupils, may form a league. Formations of leagues and arrangement of league activities must be approved by the district chairman.

Section 4. Elections

- a. Each member school shall be entitled to one vote for its district chairman, one vote for its sectional chairman, one vote on any question submitted for a referendum, and one vote on matters considered at the annual meeting.

- b. The election of district chairmen shall be conducted in the following manner:

- (1) The primary election—on or before September 15, the secretary-treasurer shall mail a primary ballot to each member school in the districts in which a chairman is to be elected. Each member school may nominate one administrator for district chairman. Primary ballots shall be returned to the secretary on or before October 1. The two administrators who receive the highest number of votes shall be declared the nominees for that district. In case of a tie for second place on the primary ballot, all persons so tied shall be considered nominees. If any one nominee receives a majority of the primary votes cast in a district, such nominee shall be declared elected by the secretary-treasurer.

- (2) Final Ballot—on or before October 10, the secretary-treasurer shall mail a final ballot to each member school in the districts in which a chairman is to be elected. The ballot shall list the nominees in alphabetical order. Final ballots shall be returned to the secretary-treasurer on or before October 20. The nominee receiving the highest number of votes on the final ballot shall be declared elected. In case of a tie, the chairman of the board shall appoint a disinterested person to determine the election by lot.

- c. The election of the sectional chairmen shall be conducted by the secretary-treasurer in a manner corresponding to the method of election of district chairmen.

Section 5. Annual Meeting

The Annual Meeting of the Association shall be held at the time and place of the Annual meeting of the Wisconsin Education Association.

Article V. Constitution and Standing Rules

Section 1. The articles governing the Association shall be the Constitution and the Standing Rules.

Section 2. Amendments

- a. Amendments to the Constitution may be *initiated* by the Board of Control at any regular or special meeting; by the secretary-treasurer upon petition from 25 member schools; or by a majority vote of the Association at its annual meeting.
- b. *Ratification of Amendments*—after being initiated as required above, a proposed amendment must be submitted to a referendum of all the member schools. Ballots must be returned within 30 days after being mailed by the secretary-treasurer. If approved by a majority of the schools voting in the referendum, the proposed amendment shall be submitted to the next annual meeting of the Association. If it then also receives a majority of the votes cast, it shall be declared ratified. If not ratified by the members voting at the annual meeting, it shall be submitted to a second referendum and if approved by a majority of the members voting, shall be declared ratified.

Section 3. Standing Rules

The Standing Rules may be changed or amended by a majority vote of the Board of Control at any regular or special meeting.

STANDING RULES**I. General Rules**

1. Membership—the membership year of the association shall correspond with the school year. The annual dues shall be paid on or before December 15.
2. Student Eligibility
 - a. Any bona-fide pupil who is in regular attendance in the 9th, 10th, 11th, or 12th grade, and not beyond the 8th semester of high school, is eligible to compete in forensic association activities, provided that he or she
 - (1) has been taking not less than 20 hours of regular school work from the first 15 days of the semester in which the contest is scheduled, and
 - (2) has an average standing for all school work equal at least to a passing mark—with not more than one grade below passing, irrespective of the number of classes carried, and
 - (3) has earned at least three credits during the last semester in which he attended school.
 - b. Student eligibility blanks must be sent to the chairman one week prior to each league contest, or to the chairman of the first contest beyond the local contest.
3. Member schools may participate with non-member schools but such participation shall not be considered in the determination of eligibility for certificates of merit.

4. Dramatic, debate, and speech coaches must be bona-fide teachers of the school, regularly employed by the school.
5. Judges and Judging
 - a. Each contest shall be judged by one or more judges. By agreement of the majority of the participating schools, the coaches may act as judges at these contests. No coach shall judge his own contestants. The judge or judges shall grade play, and speakers A, B, or C, according to merit, possibly having several of the same grade or none of some grades. All those graded A shall be eligible to go on to the next contest. If several judges are used, the median of their ratings shall be the final grade.
 - b. The fee for judging shall be determined by the contest committee.
6. The order of contestants shall be determined by the committee, insofar as possible by the drawing of lots.
7. The admission fee shall be determined by the contest committee.
8. The registration fee shall be determined by the contest committee.
9. The number and kind of awards at state contests shall be determined annually by the board of control.
 - a. All students who participate in one or more inter-school programs are eligible to receive the certificates of merit. The principal shall supply to the secretary-treasurer the names of those eligible upon forms available from the secretary-treasurer.
 - b. At the state contests or tournaments the following awards shall be given:

<i>Dramatics</i>	
A rating—individual gold medals	school banner
B rating—individual silver medals	certificate of merit
C rating—individual white ribbons	certificate of merit
<i>Debate</i>	
1st place—individual gold medals	school banner
2nd place—individual silver medals	certificate of merit
3rd place—individual bronze medals	certificate of merit
<i>Speech contest</i>	
A rating—individual gold medals	
B rating—individual silver medals	
C rating—individual white ribbons	
10. The association shall sponsor the following activities:
 - A. Dramatics—One-act play
 - B. Debate
 - C. Speech
 - Oration—original and non-original
 - Declamation—humorous and non-humorous
 - Extemporaneous Reading* (See rule VI, par. 1 and 2)
 - Extemporaneous Speaking
 - Four-Minute Speech (A contemporary problem)

* Indicates changes in the rules this year.

11. No student shall represent his school in the same year in more than one event of the speech contest.
12. Participants awarded "A" in the speech contests (beginning with league) are eligible to proceed to the next contest; participants awarded "A" in the district contest are eligible to participate in the state contest.
13. The member schools of any league shall determine the maximum number of contestants which may enter a league contest from each school in each event.
14. Fees—the registration fees for state contests shall be as follows:

Drama	-----	\$ 5.00 per school
Debate	-----	12.00 per school
Speech	-----	1.00 per contestant

The fees for each contest shall be paid to the secretary-treasurer when the registration for that contest is made.

II. Supplementary Rules for Dramatics

1. Plays to be used must be selected from the mimeographed list of APPROVED PLAYS 1949 (pink cover). To enter the drama contests, schools must send to the secretary-treasurer on or before October 15 the name of the play selected for use. There is no rule which restricts the use of a given play to one school in each district.
2. Sectional contests in drama will be held.
3. Plays awarded A ratings in the state contest are prohibited for two years following such award. Therefore, plays rated A in the past two years have been omitted from the list of APPROVED PLAYS 1949.
4. Each school shall be permitted to enter only one play in district or sectional contests.
5. **Schools receiving A awards in district and sectional dramatic competition shall be given certificates of merit. These certificates are to be provided by the state association and delivered to district and sectional chairmen as required. The recipient schools shall be responsible for entering the specific data on the forms provided.*

III. Supplementary Rules for Debate

1. The debate question for 1949 is: *Resolved*, that the president of the United States should be elected by the direct vote of the people.
2. The National University Extension Association Debate Handbook shall be the official handbook of the association.
3. Each debate team shall consist of two persons—not necessarily the same two persons for all debates.
4. No debater shall participate on both sides in the same debate contest.
5. The order of debating shall be: for constructive speech—affirmative; negative; affirmative; negative. For rebuttal: negative; affirmative; negative; affirmative.
6. One alternate may sit at the table with a debate team, but may not participate in the speaking except in the case of illness of a debater.

* Indicates changes in the rules this year.

7. Time

- a. Constructive speeches shall not exceed ten minutes; rebuttal speech shall not exceed five minutes.
- b. There shall be an official timekeeper for each debate.
- c. Time cards shall be used for all contest debates. The timekeeper shall be seated in full view of the debaters, facing them, and shall display time cards to indicate at one-minute intervals, the amount of time remaining for each debater. There shall also be a card to indicate when only one-half minute remains.
- d. The timekeeper shall rise and remain standing at the full expiration of time for both constructive and rebuttal speeches. When the timekeeper rises, the debater shall complete only the sentence already begun. If he continues beyond that sentence, the judge shall stop him. Being stopped shall not in any way affect the ranking.
- e. The affirmative team shall provide time cards for each debate.

8. Tournaments

- a. District Tournament—each district may hold a debate tournament of three rounds in which all member schools are eligible to participate.
- b. Sectional Tournament—each section shall hold a debate tournament of three rounds. On the basis of wins and losses, at least the three highest schools and all tied with them in each district tournament within the section shall be eligible to participate in the sectional tournament. Any school losing only two debates in the district tournament shall be eligible to participate in the sectional tournament.
- c. State Tournament—There shall be a state tournament of three rounds. On the basis of wins and losses, at least the three highest schools and all tied with them in each sectional tournament shall be eligible to participate in the state tournament. Any school losing only two debates in the sectional tournament shall be eligible to participate in the state tournament. On the basis of wins and losses, the highest school and all tied with it in the state tournament shall be considered the state champions.
9. Each school may enter only one affirmative and one negative team in any league, district, or sectional contest.
10. **The highest ranking schools in district and sectional debate competition shall be given certificates of merit. These certificates are to be provided by the state office and delivered to district and sectional chairmen as required. The recipient schools shall be responsible for entering the specific data on the forms provided.*
11. **Coaches are asked not to attend any of the three rounds of debate at the state contest.*
12. **The order of contestants in district, sectional, and state debate contests shall be determined by the drawing of lots on the morning of the contest.*
13. **Judges at the state debate contests are asked to submit brief written comments for each debate on forms provided by the state office.*

IV. Supplementary Rules for Declamation and Oration

1. There are *no* prohibited lists of declamations or of orations.
2. Declamations and orations shall not exceed ten minutes in length. The official timekeeper (or judge) shall stand and remain standing at the expiration of ten minutes and the participant shall only complete the sentence already begun. If he continues beyond that sentence, the judge shall stop him. Being stopped shall in no way affect the ranking.
3. A student may not use the same selection in more than one school year.
4. Declamations may be humorous or non-humorous. Separate contests shall be held for each.
5. Orations may be original (actually written by the student), or non-original. Separate contests shall be held for each. Original orations may not be used in the non-original oratory contest nor non-original orations in the original oratory contest.
6. Properties such as costumes, chairs, kerchiefs, flags, etc., may not be used in presenting declamations or orations.

V. Supplementary Rules for Extemporaneous Speaking

1. Selections may not be less than five minutes in length, nor more than seven minutes. The official timekeeper shall use time cards to indicate the passage of each minute of time; he shall stand and remain standing at the end of seven minutes, and the participant shall only complete the sentence already begun. If the participant continues further, the judge shall stop him, but being stopped shall in no way affect the ranking. The timekeeper shall notify the judge, if the participant speaks less than five minutes.
2. The host school shall provide the time cards.
3. The periodicals from which topics (not titles) will be taken are the January, February, March, and April issues of *American Observer*, *Current History*, *Newsweek*, *Scholastic*, *United States News*, *United Nations World*, and the *New Republic*.
4. For the state contest the secretary-treasurer shall select twenty to thirty topics (not titles) and write each such topic on a card. One hour before participation the pupil may draw five cards, choose a topic, and return four cards before the next contestant chooses. The same plan should be followed for all preliminary contests, substituting for secretary-treasurer, a person satisfactory to the participating schools.
5. Participants may bring to the preparation hour printed references, but no written or typed notes or outlines. In the presentation he may speak from notes prepared during the preparation hour. The host school shall provide uniform distinctive paper for participants to use in the preparation hour.
6. At the conclusion of each presentation, the judge shall ask one or more pertinent questions of each participant.

* Indicates changes in the rules this year.

VI. Supplementary Rules for Extemporaneous Reading

1. **For the 1949-50 season, on an experimental basis, the following procedure for extemporaneous reading shall be used: the secretary-treasurer shall select, for the state contest, a number of short articles from Reader's Digest or Coronet magazines, writing the title of each on a card. The participants, in order of participation, shall, 60 minutes before appearing before the judge, draw two cards, be shown the two articles, select one, and return the other within three minutes. The contestant shall make and time his own cutting, and, before the judge, comment on the context from which it is taken, and then read the cutting. The same plan should be followed for all preliminary contests substituting, for secretary-treasurer, a person satisfactory to the participating schools.*
2. **The delivery time for the introduction and reading shall be five minutes. The official timekeeper shall stand at the end of five minutes and the contestant shall only complete the sentence already begun. Being stopped shall in no way affect the ranking.*

VII. Supplementary Rules for Four-Minute Speech

1. The speech is to be written by the student on any contemporary issue—local, state, national, or international.
2. Speeches shall be limited to four minutes. The timekeeper (or judge) shall give warning at the end of three minutes by raising his hand; he shall stand and remain standing at the end of four minutes, and the participant shall only complete the sentence already begun. If he continues further, the judge shall stop him. Being stopped shall in no way affect the ranking.

GENERAL INFORMATION

Calendar

The calendar for 1949-50 which was adopted by the Board of Control is announced on the front cover. It is hoped that all leagues, districts, and sections will cooperate with the association by planning their activities to fit in with this schedule. *Plan now* to avoid conflicts with other school and community events, such as proms, music festivals, etc.

Institutes

Plan now to attend the speech institute nearest you this fall and winter. The locations and dates are on the cover of this News Letter. At these institutes, instruction is offered in the various speech arts and there is ample opportunity for question and discussion of the problems arising in speech work. The institutes offer a fine opportunity to stimulate interest in forensic activities and to get ideas for carrying on a speech program.

* Indicates changes in the rules this year.

Drama

The first contest each year is the one-act play contest. Schools entering *must* select plays from the list of *Approved Plays 1949*, (pink cover). Your choice of play must be registered with the secretary-treasurer by *October 15*.

Single copies of the plays on the *Approved List 1949* may be borrowed for examination purposes only, from the Bureau of Information and Program Services, 1327 University Avenue, Madison 5, Wisconsin. Plays selected for use are to be secured by each school from the publisher. Addresses of the publishers were given on the play list.

Script Advisory Service

The Wisconsin Idea Theatre is this year offering a play script advisory service to members of the Wisconsin High School Forensic Association. The service is offered to encourage coaches to choose the best plays possible for their individual situations. Quite often the choice of a play keeps the coach and cast from realizing their best efforts. To improve this situation, the staff of the Wisconsin Idea Theatre has offered its services for consultation on play selection.

Schools desiring to take advantage of the service should send their contest choices as early in the fall as possible to the secretary-treasurer of the WHSFA. He will relay the play choice, together with such supplementary information as to casting, and local situations as the coach may wish to supply, to the Wisconsin Idea Theatre. Those requesting the service earliest will doubtless receive the most help, as staff time is limited.

Debate

The debate question is:

Resolved that the president of the United States should be elected by the direct vote of the people.

The question provides an excellent opportunity to correlate debate work with the social studies classes and to experiment in group discussion techniques.

The Debate Handbook of the National University Extension Association will be provided as the basic reference to all schools planning to enter debate. The Handbook and other materials provided by the association will be sent to schools entering debate as the membership dues are received. Membership entitles such schools to receive one copy of each volume of the handbook free. There will be additional free materials and the Bureau of Information and Program Services will again have loan material on the debate question at no cost other than return postage.

Speech

The speech program provides the opportunity for individual training in oratory, declamation, extemporaneous reading and speaking. Beginning with local contests, students are selected on the basis of excellence, for participation in league, district, and state contests.

For these events many schools are finding that additional values are found in preparing or cutting selections for forensic contests. However, the association does provide a copy of "Winning Orations" and some declamations to member schools.

For the extemporaneous speaking contest, the magazines listed below and in the rules are merely suggestive. Topics chosen by contest chairmen will have appeared in at least two or three of these periodicals. Periodicals suggested as references for the extemporaneous speaking contest are as follows:

American Observer, Civic Education Service, 1733 K Street, N. W., Washington 6, D. C. 55¢ a semester, or \$1.10 a school year in clubs of 5 or more. Single copy (or clubs of less than 5) 75¢ a semester; \$1.50 a school year; \$2 a calendar year. November 1 to May 23 incl.: 90¢ in clubs of 5 or more, \$1.20 a single copy. January 31 to April 25 incl.; 50¢ in clubs of 5 or more, 60¢ a single copy. Desk copy for teacher furnished with a club of five or more copies.

Current History, 108 Walnut St., Philadelphia 6, Pa., \$4 per year, 35¢ per copy; 25¢ per set (for Study Guide and Test and Current History).

New Republic, 40 East 49th St., New York 17, N. Y., 15¢ per single copy. \$6 per year. Special bulk package rate of 8¢ per copy applies only when 5 or more copies are ordered for a specified number of weeks to be sent in one package to one address. For example, an order for 10 copies for 13 weeks amounts to 13 times 80¢ or \$10.40. Flexible as to number of copies and number of weeks. Issue dated Monday is sent with special care to arrive in good condition and on time.

Newsweek, Educational Bureau—152 W. 42 St., New York 18, N. Y. Special bulk and student rates: 2-week trial order—approximate classroom order and pay 10¢ per copy for copies actually sold during trial period. After trial period, order for as many weeks as required (minimum order 5 copies 5 weeks at 10 cents per copy. Special semester and school term rates offered (write for terms and prices), under which terms copies are mailed to students' individual addresses. All units of study services including Map of the Month, Platform (monthly), Weekly Study Guides, Monthly tests, and Semester tests are furnished to instructor with orders of 10 or more subscriptions at above special bulk and student rates. Write for sample set and full details to Newsweek, Educational Bureau, New York Office.

Senior Scholastic, Published by Scholastic Corporation, 7 East 12th St., New York 3, N. Y. Student Edition: 60¢ per semester; \$1.20 per school year. Teacher Ed. \$2.00 per year. Group orders accepted under trial subscription plan at these rates, and need not be paid in advance.

United States News & World Report, 24th & N Streets, N. W., Washington 7, D. C. \$5 per year, \$8 for two years, \$10 for three years.

United Nations World, 385 Madison Avenue, New York 17, N. Y. Individual subscriptions: \$.35 per copy, \$4 per year, \$7 for two years and \$9 for three years; bulk subscriptions of ten or more copies to be sent to a single address, (especially designed for instructors), \$.25 per copy, \$1 for four months, \$3 for one year.

Part II

FOR YOUR PROFESSIONAL GROWTH

DEBATE: A COMBINED OPERATION

By H. L. Ewbank, Jr., Instructor in Speech, Milwaukee Extension Center

In his book, *Educating Liberally*, Hoyt H. Hudson holds that the aim of a liberal education is to overcome ignorance, muddleheadedness, and insensibility. He sees the process of educating liberally as a continuous battle against these foes of clear thinking. Since each of the three enemies presents a separate front, three offensives must be carried on simultaneously, with three specially designed weapons. These are information, which wipes out ignorance; an operative logic, which overwhelms muddleheadedness; and imagination, which bombards insensibility. The means of putting these weapons to use is found in written and oral communication. So if we can communicate with someone, we can furnish him with information and train him to use a working logic and his imagination; and he, in turn, will respond by communicating with us in a manner that is understandable and clear to us.

Mr. Hudson had set forth only the goals of a liberal education before his writing was cut short by death. We can only theorize as to what he had in mind as a means for waging this war against poor thinking, but I submit that debating provides an excellent discipline in training for this combined operation.

Well, now, just what is there in the activity of debating that will help a man win out in his battle against ignorance, muddleheadedness, and insensibility? What is it that helps him think straight, no matter what problem he is facing?

Sydney Smith once said, "It is the calling of great men not so much to preach new truths as to rescue from oblivion old truths which it is our wisdom to remember and our weakness to forget." These old truths lie hidden in scattered and sometimes remote places. We must seek them out, and bring them to the fore. This process amounts to the acquisition of information. The need for information in debating is fairly obvious. We need to know something about the proposition before we can analyze it, before we can find out what the issues are. The rescue of these old truths will prove to be the rescue of the debater in this effort. We need information in order to build a constructive speech and to explain to our audience just what we mean as we present our reasoning to them. We need information in order to refute opposing arguments successfully. Both general and specific information are necessary in debate then; first, so that we have a basis on which our logic can work, and second, so that we can communicate our thoughts effectively to our hearers.

Information, in and of itself, is of very little use to a debater. As I have suggested, one of the major needs for information is to furnish the basis for the analysis of the proposition. Only by seeing how the individual bits of information fit into the entire picture can we make effective use of them. We must be able to see the proposition as a series of related questions or issues, each of which must be considered before the proposition can be accepted or rejected. We must be able to marshall our information in terms of these issues, so that it becomes an organized body of material instead of a group of isolated items collected from hither and yon. This requires the application of logic. We must have a system for breaking down large propositions into smaller questions which can be effectively dealt with.

Besides the first analysis of the proposition, we need an operative logic for the on-the-spot analysis of the arguments of the opposition. The ability to follow the train of thought of the opposition speaker, to see where he is going, and to discover his weaknesses, depends on a working system of logic. This rebuttal ability is a prime requisite of the good debater.

But logic alone is not only inadequate, it is dull. It is inadequate because it may not carry far enough to show all of the ramifications of the proposition or all of the facets of the question. It is dull to the hearer because he isn't used to thinking rationally or logically. He likes his thoughts spiced with some appeal to the emotions—some picture or image that will come alive in his mind. Something else besides logic is necessary to determine the historical perspective of the proposition and furnish the persuasive appeal in the speech. This 'something Else' is imagination. Because of the concept that we have of debate, imagination is the weapon that is least used. Consequently, the fight against insensibility is not as successful as the others. Imagination in debate must be adapted to the needs of logic, it must be of the type referred to as a historical sense, or comprehensive intellect, rather than creative imagination as it is conceived in a literary sense.

It is perfectly obvious that all of the analysis, research, and synthesis that goes into debate work is directed toward the general end of communication, in this case, generally, oral communication. We are already aware that oral communication demands instant intelligibility. On the debate platform this is even more true than in many other cases, because there is another man who will follow us to point up our weaknesses and shortcomings. Effectiveness, and by that I mean effectiveness the first time an idea is presented, is the *sine qua non* of good debating. And effectiveness cannot be gained without this happy union of information, imagination, and an operative logic.

The fact that debate requires the development of imagination in only a very limited sense is enough to show us that Mr. Hudson may have thought of something else as the best means of gaining a liberal education. There are, of course, other fields of intellectual endeavor that would provide us with equally good training. Still, there is ample evidence to show that debate is among the most effective of these combined operations.

We find the evidence not just in the answers to the questionnaires sent out to college alumni asking what they think was the most valuable part of their college education, but in the actual records of their accomplishments

and of their salaries. For instance, there are over 550 members of Delta Sigma Rho, the national honorary forensic fraternity, whose names appear in the current *Who's Who in America*, and fifty others whose names have appeared in earlier editions. In 1925, the latest date of graduation from college among these men, there were about three thousand members of the fraternity. This means that one man in every five in Delta Sigma Rho at that time is now in some position of high trust and importance in our country. There are lawyers, ministers, journalists, professors, business executives, government officials, authors, college presidents, radio news analysts, foreign ministers; in short, there are men in every profession where clear thinking and effective communication are needed. Almost half of these men were also elected to Phi Beta Kappa while they were in college, so their effectiveness is not entirely a post-graduate accomplishment.

Donald S. Bridgeman, of the American Telephone and Telegraph Company, made a survey of employees of that organization in order to discover possible relationships between college grades and activities and later salaries. He emphasized the fact that Bell Telephone seeks to develop careful and effective method in its employees rather than salesmanship or large group leadership. His findings, printed in 1930, show that good grades and substantial campus achievement in activities were the two most important factors in gaining high salaries from Bell. Achievement in forensic and debate work, or in editorial work, tallied most closely with the better-than-average salaries for the 1300 men studied. This showed a higher correlation than the length of service with the company. Of the men who had been debaters or editors of college papers or magazines, 85% were above the median salary of comparable employees. This is more than just a chance figure; there is a definite positive correlation between the regimen of debate and the ability to develop effective and careful methods in business. Editorial work is shown here to be one of the other endeavors that will educate liberally.

A third type of testimony favoring debate as an educator is found on our own university campus. When the will of "Big John" Richards was filed for probate, it was found that he had bequeathed the sum of \$5,000 to the Athena Debating Society. This material tribute is ample proof that "Big John" believed in the things that the organization stands for. It gives full credence to his statement that debating did more for him than any other part of his college career. And it seems to me that this evidence goes far to show that we can educate effectively through debate.

Because the discipline of debate demands this coalition of the forces that combat ignorance, muddleheadedness, and insensibility, and because the application of the information, working logic, and imagination is found in communication with others, I am convinced that debate is one answer to the problem of how to educate liberally, and each of us can extend the benefits of debate to others as we coach them in effective communication.

REFERENCES FOR DRAMA TEACHERS

- Albright, Harry Darkes. *Working Up a Part*. Houghton, 1947. 224 pp. \$2.50.
- American Educational Theatre Association. *Syllabus for a Proposed Course in Dramatics at the High School Level*. 3rd Edition, 1946. 33 pp. \$1. Address Wm. P. Halstead, Speech Dept., University of Michigan, Ann Arbor, Michigan.
- American Educational Theatre Association. *Teaching Dramatic Arts in the Secondary Schools*. 1945. 52 pp. \$1. Address above.
- American Educational Theatre Association. *Drama Festivals: A Manual*. 1945. 24 pp. \$1. Address above.
- Buerki, F. A. *Stage Craft for Non-Professionals*. F. A. Buerki, Wisconsin Union Theatre, Madison, Wis.
- Crafton, Allen and Royer, Jessica. *The Complete Acted Play from Script to Final Curtain*. 1944. 385 pp. F. S. Crofts & Co., New York.
- Acting; *A Book for the Beginner*. 1928. 318 pp. Crofts & Co.
- Dolman, John. *The Art of Play Production*. Harper, 1928. 466 pp. \$4.
- Gillette, A. S. *Planning and Equipping the Educational Theatre*. National Thespian Society, College Hill Station, Cincinnati 24, Ohio. 1916. 30 pp.
- Hedde, W. G., and Brigance, W. N. *American Speech* (Part V on High School Drama). J. B. Lippincott Co. 1942. 598 pp. \$1.80.
- Latham, Jean Lee. *Do's and Don'ts of Drama*. Dramatic Publishing Co. 1935. 172 pp.
- Omanney, Katherine Anne. *The Stage and the School*. Harper, 1939. 504 pp. \$1.60.
- Dramatics*. An educational magazine for directors, teachers, and students of dramatic arts. National Thespian Society, College Hill Station, Cincinnati 24, Ohio. Monthly. \$2.50 per year.
- Theatre Arts*. Monthly publication of Theatre Arts, Inc., 130 W. 56th St., New York 19, N. Y. \$5 per year.
- The Wisconsin Idea Theatre Quarterly*. Published by the Wisconsin Idea Theatre. University Extension Division, Madison, Wis. 40 pp. A multi-graphed quarterly devoted to the idea of a people's theatre for Wisconsin. \$1 per year.

REFERENCES FOR DISCUSSION AND DEBATE

- Auer, J. Jeffery and Ewbank, Henry Lee, *Handbook for Discussion Leaders*, Harper and Brothers, New York, 1947.
- Debater's Magazine*. Quarterly publication of Nichols Publishing House. 814 Campus Ave., Redlands, Calif. \$4 per year.
- Ewbank, Henry Lee and Auer, J. Jeffery, *Discussion and Debate*. F. S. Crofts & Co., New York, 1941.
- Baird, A. Craig, *Public Discussion and Debate*, Ginn & Co., New York, 1937.
- Lahman, Carroll Pollock, *Debate Coaching*, Revised Edition, H. W. Wilson Company, New York, 1936.
- McBurney and Hance, *The Principles and Methods of Discussion*, Harper & Brothers, New York, 1939.

SUGGESTED REFERENCE MATERIALS

SPEECH MATERIALS FOR TEACHERS

Many requests come to the secretary-treasurer for books and periodicals on speech work. The following references, while in no sense a complete list, are worth purchasing, or they may be borrowed for 2 week loan period from the Bureau of Information and Program Services, University of Wisconsin Extension Division, 1327 University Avenue, Madison 5, Wis., or from the Traveling Library, State Office Building, Madison, Wis.

Fundamentals of Speech

- Weaver, Andrew Thomas, *Speech Forms & Principles*, Longmans, Green & Co., New York. 1942.
- Borchers, Gladys L., and Wise, Claude M., *Modern Speech*, Harcourt Brace & Co., New York. 1947.

Public Speaking

- Monroe, Alan H., *Principles and Types of Speech, Revised*. Scott Foresman & Co., New York. 1939.
- Parrish, W. M., *Speaking in Public*, Charles Scribner's Sons, New York. 1947.

Voice Training

- Anderson, Virgil A., *Training the Speaking Voice*, Oxford University Press, New York. 1942.
- Grim, Harriett E., *Practical Voice Training*, Appleton-Century Crofts, New York. 1948.
- Holmes, F., Lincoln, D., *A Handbook of Voice and Diction*, F. S. Crofts & Co., New York. 1940.

Interpretation

- Lowrey, Sara and Johnson, Gertrude E., *Interpretative Reading*, D. Appleton Century Co., New York. 1942.
- Woolbert, Charles H., and Nelson, Severina, *The Art of Interpretative Speech. Revised Edition*, F. S. Crofts & Co., New York. 1939.
- Magazine—*Quarterly Journal of Speech*, Speech Association of America, University of Missouri, Columbia, Mo.

PUBLISHERS OF SPEECH MATERIALS

- Walter Baker, 178 Tremont St., Boston, Mass.
- Ivan Bloom Hardin Co., 3806 Cottage Grove Ave., Des Moines, Iowa
- T. S. Dennison & Co., 225 So. Wabash Ave., Chicago, Ill.
- Dramatic Publishing Co., 1706 So. Prairie Ave., Chicago 16, Ill.
- Dramatist's Play Service, Inc., 6 E. 39th St., New York, N. Y.
- Samuel French, 25 W. 45th St., New York, N. Y.
- Edna Means Dramatic Service, 525 Arlington Pl., Chicago 14, Ill.
- Wetmore Declamation Bureau, 1631 So. Paxton St., Sioux City, Ia.

ROUND OUT YOUR DRAMA PROGRAM

By Herman H. Brockhaus, Chairman, Dept. of Speech and Dramatics,
University of Wisconsin Extension Division

Compared with most of the other speech events sponsored by the WHSFA, dramatics is a newcomer. Declamation, for example, had its origin in 1895, oratory in 1912, extemporaneous speaking and reading in 1925, and debate in 1926.¹ The first one-act play contest conducted by the Association was held in the spring of 1930.

Although the number of schools participating in this event has increased steadily, fewer members take part in the drama contest than in debate or spring forensics. An extensive study made in 1946-47 showed that at least 82% of the schools belonging to the WHSFA engaged in the spring speech contests; 20% took part in debate, while 13% entered the drama event.

Though a relatively small number of the Association members take part in the one-act play contest, almost all schools conduct a local dramatics program, including such performances as class plays, all-school plays, and non-contest one-act plays.

These non-competitive dramatic productions surely are worth-while, and their value is not being minimized. However, producing a contest play in addition to the other performances can round out a school's dramatics program and make it even more effective.

Consider the benefits to be gained from entering a play in the Forensic Association drama contest:

1. Producing a play in a contest wherein several schools participate gives each director and cast an opportunity to observe the kind of work others are doing in dramatics.

2. Presenting a play in a contest in which each production is awarded a merit rating by a competent judge enables a director and cast to compare the quality of their performance with that of other productions.

3. Giving a play in a contest before a critic judge makes it possible for each director and cast to profit from the helpful suggestions offered by the judge in his critique.

4. Entering a play in an inter-school contest gives the actors in each cast a chance to meet other students who have a similar interest; thus the contest can afford a wholesome social experience and also stimulate additional enthusiasm for dramatics.

In some schools participation in the WHSFA drama contest has motivated an intramural dramatics program. In 1946-47, nine of the schools taking part in the Association's one-act play event held local contests to select the productions they later entered in competition with other schools. This procedure gave acting experience to more students and created a school-wide interest in dramatics.

Entering a play in the WHSFA contest can make a real contribution to the dramatic activities of your school. Producing a contest play can round out your drama program.

¹Declamation and oratory were contests conducted by the High School Lyceum Association of Wisconsin, forerunner of the WHSFA. Debating was encouraged by the Lyceum Association but was not sponsored as a regular event. The present Forensic Association replaced the Lyceum organization in 1925.

HELPFUL ARTICLES IN LAST YEAR'S NEWS LETTER

Speech

Barnett, Wynette, *Making the Most of the Speech Contest*. Sept. News Letter, Vol. XX. No. 1. pp. 19. 1948.

Borchers, Gladys L., *Helps in Teaching Speech*. May News Letter, Vol. XX. No. 4. pp. 7. 1949.

Brockhaus, Herman H., *Spring Forensic Contests—Then and Now*. February News Letter, Vol. XX. No. 3. pp. 10-13. 1949.

Krog, Agnes, *Speech in Student Government*. May News Letter, Vol. XX. No. 4. pp. 8. 1949.

Drama

Eddy, Junius, *Improving Play Production*. September News Letter, Vol. XX. No. 1. pp. 17-19. 1948.

Gard, Robert E., *Script Advisory Service*. May News Letter, Vol. XX. No. 4. pp. 5. 1949.

Discussion and Debate

Brockhaus, Herman H., *Tools of Democracy*. November News Letter, Vol. XX. No. 2. pp. 15-20. 1948.

Buys, William E., *Discussion: A Necessary Prerequisite to Debate*. September News Letter, Vol. XX. No. 1. pp. 14-16. 1948.

Buys, William E., *Discussion in the Southern Ten*. November News Letter, Vol. XX. No. 2. pp. 9-12.

Walsh, Grace, *Discussion in the Northern Section*. February News Letter, Vol. XX. No. 3. pp. 5-8.

MIMEOGRAPHED ARTICLES SENT OUT TO SPEECH COACHES LAST YEAR

Extra copies available upon request to WHSFA

Speech

Grim, Harriett E., and Johnson, Gertrude E., *Sources for Cuttings*. A mimeographed bibliography of books recommended for persons desiring to make forensic cuttings.

Schindler, C. M., *How to Teach Declamation*.

Walsh, Grace and Rasmussen, Carrie, *Wisconsin's Speech Curriculum Committee*.

Drama

Suggested Criteria for Judging Contests in Play Production

Discussion and Debate

Selected Bibliography on Discussion

Buys, William E., *Minimum Essentials of Debating Theory*.

STATE DRAMATIC CONTEST

Play Circle, Memorial Union, Dec. 9, 1948

Presiding: A. C. Jones, Chairman of Board of Control

Judge: Robert E. Freidel, Supervisor of Drama

Dept. of Municipal Recreation and Adult Education

Milwaukee Public Schools

Production Manager: David Weiss

Production Assistants: Wisconsin Players

MAYVILLE—SOUTHERN SECTION—"A"

"THE WILLOW PLATE"

By Florence Ryerson and Colin Clements



Bottom row—left to right: Ellen Ruedebusch, Carolyn Royer, Patricia Baker, Lois Starr

Top row—let to right: Lawrence Langenhorst, John Youngbeck, Peter Mann, Norman Dorst, Leon Weinberger, Gerald Schellpfeffer

The Property Man	John Youngbeck
Mung Chu Po	Gerald Schellpfeffer
Cheng Loy Fah	Ellen Ruedebusch
The Dragon	Lawrence Langenhorst
The Spirit of Mung Sin Chee	Peter Mann
The Spirit of Tai Hoo Tso	Carolyn Royer
A Mandarin of the Sapphire Button	Norman Dorst
His Body Guard	Leon Weinberger
Flower Girls	Lois Starr, Patricia Baker

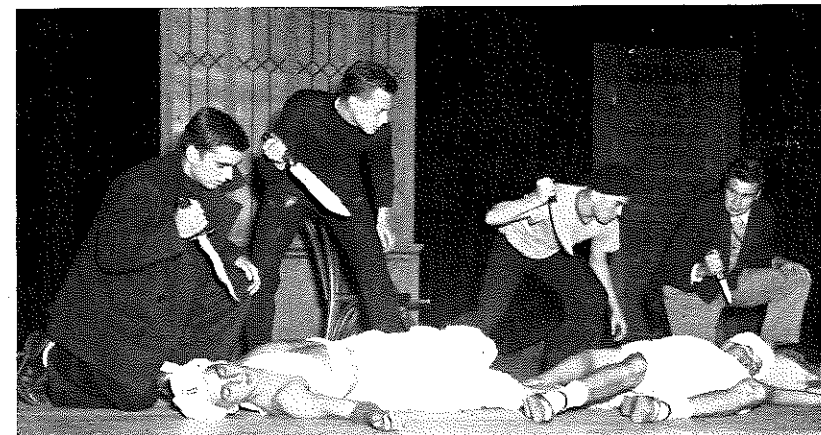
Director—Freda Zuehlke

Stage Managers—James Dorst, Bill Bachhuber

MILWAUKEE MARQUETTE—SOUTHERN SECTION—"A"

"A NIGHT AT AN INN"

By Lord Dunsany



Let to right: Michael Kuhn, John Engelhardt, Cornelius Shields, Roger Schneider

On floor, same order: Thomas Krizek, Timothy Harding

A. E. Scott—Fortescue (The Toff)	Roger Schneider
William Jones (Bill)	John Engelhart
Albert Thomas	Cornelius Shields
Jacob Smith (Sniggers)	Michael Kuhn
First Priest of Klesh	Thomas Krizek
Second Priest of Klesh	Timothy Harding
Third Priest of Klesh	Patrick Henry
Klesh	Gary Moore

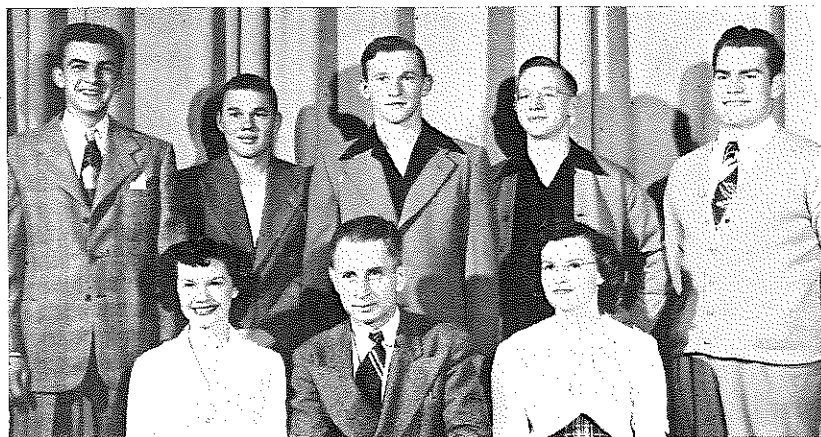
Director—L. J. Schlenk

Stage Managers—John Hart, Donald Horaitis, Frank Seng

MUSCODA—SOUTHERN SECTION—"A"

"THE MAN IN THE BOWLER HAT"

By A. A. Milne



Seated—left to right: Joyce Merwin, Neil Greene, Director, Elizabeth Geisz

Standing—left to right: Donald Poshichal, Carl Rosenau, Rodney Vance,
Dick Muller, Larson Radel

Mary.....	Elizabeth Geisz
John.....	Dick Muller
Hero.....	Carl Rosenau
Heroine.....	Joyce Merwin
Villain.....	Don Pospichal
Bad Man.....	Lawson Radel
The Man in the Bowler Hat.....	Rodney Vance

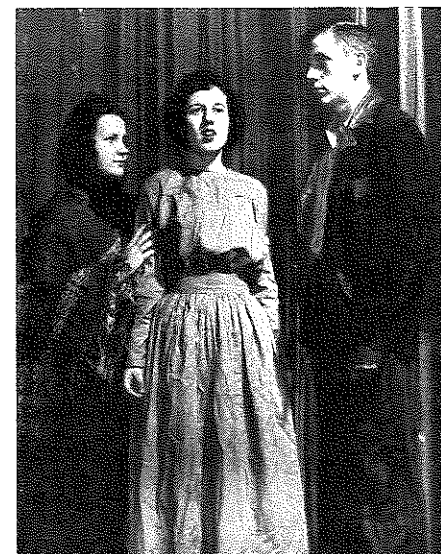
Director—Neil D. Greene

Stage Managers.....Garry Adams, Burton Scott, Jeannette Brokaw

WAUPUN—CENTRAL SECTION—"A"

"MARY JONES"

By Ronald Mitchell



Left to right: Marlene Redman, Kay Griepentrog, Elliot Michael

Mary Jones.....	Kay Griepentrog
Ben Jones.....	Elliot Michael
Mrs. Reese.....	Marlene Redman

Director—George Kanzelberger

Stage Manager.....Albert Leu

MILWAUKEE RIVERSIDE—SOUTHERN SECTION—"B"

"THE WILLOW PLATE"

By Florence Ryerson and Colin Clements

Cast of Characters

The Property Man..... Charles Lee
 Mung Chu Po..... Gordon Mueller
 Cheng Loy Fah..... Margaret Farley
 The Dragon..... Clarence Novak
 The Spirit of Mung Sin Chee..... Dick Chapelle
 The Spirit of Tai Hoo Tso..... Joan Poppert
 A Mandarin of the Sapphire Button..... Austin Anton
 His Body Guard..... Claude Thompson
 Flower Girls..... Rachel Baron, Dotty Billings
 Carolyn Richardson

Directors—Isabelle Bodden—Ann Williams

Stage Manager..... Peter Cleary

SEYMOUR—CENTRAL SECTION—"B"

"WHITE IRIS"

By Roberta Shannon

Cast of Characters

Jessamy Doone..... Joyce Siebers
 Marcia Doone..... Shirley Severson
 Lucy Claire..... Marian Barth
 Dorcas..... Loretta Kurowski

Director—Mrs. Wayne Jensen

Stage Managers..... Kennen Wiese, Roman Ritchie, Pat Duffey

SUPERIOR CATHEDRAL—NORTHERN SECTION—"B"

"WHERE THE CROSS IS MADE"

By Eugene O'Neill

Cast of Characters

Captain Bartlett..... Pat Utyro
 Nat Bartlett, his son..... Jerry O'Brien
 Sue Bartlett, his daughter..... Mary Kay McGill
 Doctor Higgins..... Robert Rima
 Silas Horne, mate..... Richard Berthiaume
 Cates, bo'sun..... Leonard Horyza
 Jimmy Kanaka, harpooner..... Jack Teaporten
 Doctor's attendants..... Robert Herbert, John Ennis

Director—Sister Margaret Mary

Stage Manager..... William Kimmes

CEDARBURG—SOUTHERN SECTION—"B"

"LAST FLIGHT OVER"

By Allean Lemmon

Cast of Characters

Benny, 12 year old son..... Jan Zdrojek
 Mattie, the daughter..... Barbara Merlet
 Sairy Walker..... Mary Ann Moegenberg
 Davie, 18 year old son..... James Leisner
 Paw..... Donald Zautcke
 Three Neighbor Ladies..... Marion Neff, Renatli Grob
 Mary Louise Durfee

Director—Robert Gaffney

Stage Managers..... Thomas Frank, Merritt Paul

PEWAUKEE—SOUTHERN SECTION—"B"

"THE PATCHWORK QUILT"

By Rachel Field

Cast of Characters

Mrs. Willis..... Gertrude Ambrus
 Ann..... Genevieve Raddenbach
 Joe..... Eugene Ackley
 Betty..... Diane Zander
 William..... Robert Gehrke
 Molly..... Mary Koch
 Emily..... Sandra Buttenhoff

Director—Margaret Zurbuchen

Stage Managers..... Ted Bosben, Michael Shafer

LA CROSSE AQUINAS—CENTRAL SECTION—"B"

"LUCIFER AT LARGE"

By Frank Ford

Cast of Characters

Fats..... John Leinfelder
 Superb..... George Pearse
 You..... George Krismer
 Lucifer..... Joseph Wimmer
 Time..... Edward Denning

Director—Sister Marie Leon

Stage Managers..... Donna Rudolph, Peter Schaettle

EAU CLAIRE—NORTHERN SECTION—"B"

"THE WHITE LAWN"

By Roger M. Busfield Jr.

Cast of Characters

Kathy.....Helen Herzberg
 Mrs. Manning.....Ruby Bragg
 John Clark.....Ralph Holmberg
 Dr. Brownlee.....Douglas Caton

Director—Dale E. Krammes

Stage Manager.....Jerris La Lande

LAKE MILLS—SOUTHERN SECTION—"B"

"THE VALIANT"

By Holworthy Hall & Robert Middlemass

Cast of Characters

Warden Holt.....Philip Crump
 Father Daly, Prison Chaplain.....Robert Hillebrand
 James Dyke, the prisoner.....Albert Michel
 Josephine Paris, the girl.....Marion Schultz
 Dan, a jailer.....August Latsch
 Wilson, an attendant.....Ronald Kastorff

Director—Ella Kneller

Stage Manager.....Betty Korth

SUMMARY OF SECTIONAL DRAMA CONTEST REPORTS 1948

Central Section

November 22, 1948—Central State Teachers College, Stevens Point

Number of schools in section 163

Schools participating in sectional contest 9

<i>School</i>	<i>Rating</i>
Colby	B
Waupun	A
Tomah	B
Seymour	A
Scandinavia	B
Mosinee	B
La Crosse Aquinas	A
Marshfield	B
Shawano	B

Judge—Pauline Isaacson

Southern Section

December 1, 1948—Lake Mills High School

Number of schools in section 154

Schools participating in sectional contest 8

<i>School</i>	<i>Rating</i>
Blanchardville	B
Cedarburg	A
Lake Mills	A
Marquette Milwaukee	A
Mayville	A
Muscoda	A
Pewaukee	A
Riverside Milwaukee	A

Judge—Robert E. Gard

Northern Section

November 30, 1948—Eau Claire State Teachers College

Number of schools in section 93

Schools participating in sectional contest 3

<i>School</i>	<i>Rating</i>
New Auburn	B
Superior Cathedral	A
Eau Claire Senior	A

Judges—Earl Kjer and Oscar M. Haugh

SUMMARY OF DISTRICT DRAMA CONTEST REPORTS 1948

La Crosse District

November 20, 1948—La Crosse State Teachers College

<i>School</i>	<i>Rating</i>
La Crosse Aquinas	A
Galesville	C
West Lima	C
La Farge	B
Tomah	A
Black River Falls	C
Gays Mills	B

Judges—Marie Toland and Betty Brown

Milwaukee District

November 20, 1948—Riverside High School, Milwaukee

<i>School</i>	<i>Rating</i>
Cedarburg	A
Mayville	A
Milwaukee Marquette	A
Milwaukee Riverside	A
Milwaukee Mercy	B
Plymouth	B
West Bend	B
Sheboygan Falls	C

Judge—Catherine Miller

Oshkosh District

November 18, 1948—Shawano High School

<i>School</i>	<i>Rating</i>
Brussels	B
Waupun	A
Marinette	B
Pulaski	C
Shawano	A
Oconto Falls	B
Seymour	A

Judge—Ruth McKennan

Platteville District

November 17, 1948—Platteville State Teachers College

<i>School</i>	<i>Rating</i>
Hollandale	B
Mount Horeb	C
Orfordville	B
Blanchardville	A
Muscoda	A
Montfort	C
New Glarus—withdraw	
Benton	B
Belmont	B

Judges—Carl Dallinger, Stanley Newcomb, and Dorothy Hinde,
all of Univ. of Dubuque

Stevens Point District

November 19, 1948—Stevens Point State Teachers College

<i>School</i>	<i>Rating</i>
Colby	A
Nekoosa	B
Montello	B
Birnamwood	B
Scandinavia	A
Gresham	B
Medford	B
Mosinee	A
Marshfield	A

Judge—Earl Kjer

Whitewater District

November 18, 1948—Oakwood High School, Oregon

<i>School</i>	<i>Rating</i>
Johnson Creek	B
Cambria	C
Wilmot	B
Pewaukee	A
Lake Mills	A
Sun Prairie	B
Oakwood Oregon	B
Rio	C

Judges—Members of Oakwood Faculty and Coaches

Eau Claire, River Falls, and Superior districts did not hold contests. Contestants in Eau Claire and Superior districts went directly to sectional.

STATE DEBATE CONTEST

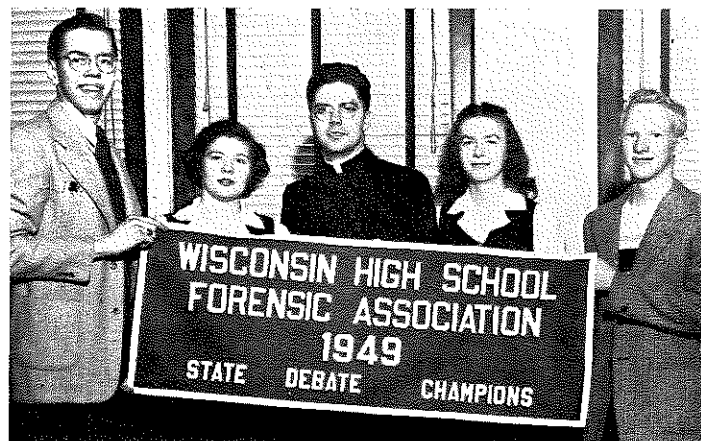
February 26, 1949

Resolved, That the United Nations now be revised into a federal world government.



Debaters and Coaches of Wisconsin High Schools

EAU CLAIRE ST. PATRICK'S—NORTHERN SECTION—FIRST PLACE



Left to right: Richard Donaldson, Roma Kranzfelder, Rev. R. D. Rossiter, Mary Ann McCluskey, Robert Southers

Affirmative

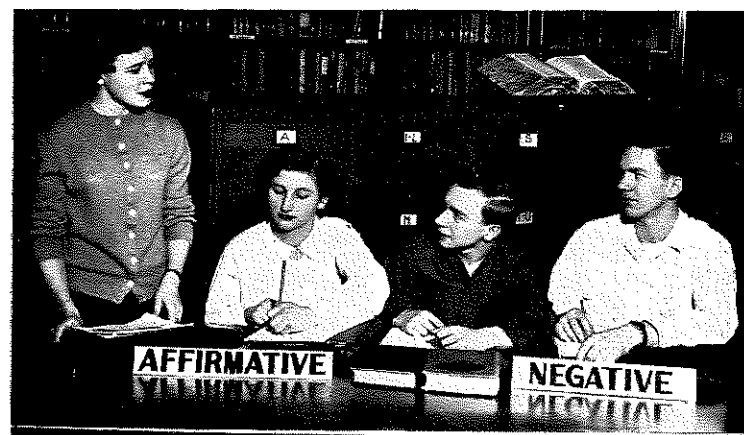
Roma Kranzfelder
Richard Donaldson

Negative

Mary Ann McCluskey
Robert Southers

Coach: Rev. Richard D. Rossitor

SHEBOYGAN CENTRAL—SOUTHERN SECTION—FIRST PLACE



Left to right: Pat Schlaht, Sherry Huibregtse, Charles Kuehn, Allan Frank

Affirmative

Pat Schlaht
Sherry Huibregtse

Alternates

Lois Smith

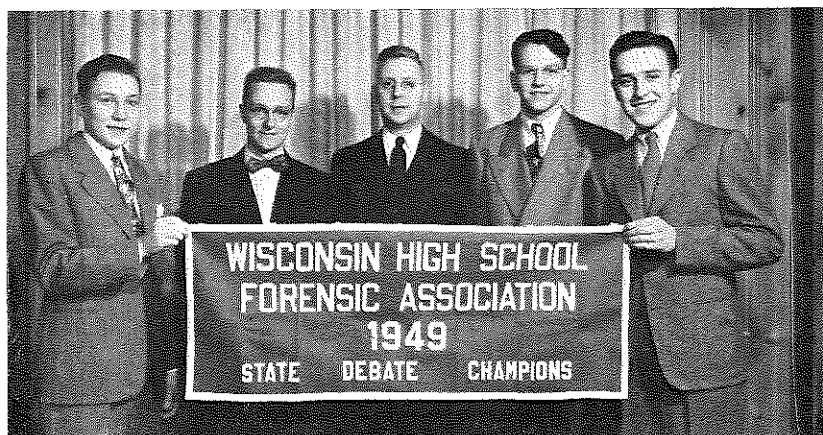
Negative

Charles Kuehn
Allan Frank

Don Boelke

Coach: Arnold E. Melzer

MILWAUKEE CONCORDIA—SOUTHERN SECTION—FIRST PLACE



Left to right: James Wuebben, John Dede, O. C. Rupprecht, Coach,
Oliver Wetzel, Gary Wunrow

Affirmative

Oliver Wetzel
Gary Wunrow

Alternates

Arnold Koelpin

Negative

John Dede
James Wuebben

Wesley Isenberg

Coach: O. C. Rupprecht

SHEBOYGAN NORTH—SOUTHERN SECTION—SECOND PLACE

Affirmative

Mary Ann Siekmann
Gisela Sanders

Negative

Walter Schwerin
Douglas Van de Water

Coach: Willard A. Witzeling

WAUSAU—CENTRAL SECTION—SECOND PLACE

Affirmative

Sue Sayer
Arthur King

Alternates

Robert Eckerly

Negative

Archie Becker, Jr.
Henry Ruf

Beverly Sternberg

Coach: Ervin C. Marquardt

CHIPPEWA FALLS—NORTHERN SECTION—SECOND PLACE

Affirmative

Ann Bollman
Janet Thorpe

Alternates

Mary Gisvold

Negative

Judy Carmen
Julie Crane

Mary Ellen Jenks

Coach: William E. White

PRAIRIE DU CHIEN CAMPION—SOUTHERN SECTION—SECOND PLACE

Affirmative

Gary Wills
Daniel Solon

Alternates

William Baker

Negative

David Krieg
Campion Kersten

George Kersten

Coach: R. J. Grennan, S. J.

LA CROSSE AQUINAS—SOUTHERN SECTION—THIRD PLACE

Affirmative

George Pearse
Kenneth Erickson

Negative

James Conway
John Leinfelder

Coach: Sister Mary Michael

CHIPPEWA FALLS McDONELL—NORTHERN SECTION—THIRD PLACE

Affirmative

Norbert Tlachac
Patrick Kelley

Negative

Ona Jean Coyle
James Smith

Coach: Gerald M. Schaefer

AMERY—NORTHERN SECTION—THIRD PLACE

Affirmative

Corrine Tandberg
Loretta Nacey

Alternates

Harlan Siebrecht

Negative

Robert Shafer
Walter Fraipont

Coach: Miss Margaret Jerdee

MERRILL—CENTRAL SECTION—THIRD PLACE

Affirmative

Mark Koschman
Jerry Boettcher

Negative

Lynette Crosby
Larry Eggers

Coach: Hannah Haroldson

NEENAH—CENTRAL SECTION—FOURTH PLACE

Affirmative	Negative
Howard Heckner	Charles Drestler
Robert Jung	Kirk Lawson
<i>Coach: Helen Hughes</i>	

PORT WASHINGTON—SOUTHERN SECTION—FOURTH PLACE

Affirmative	Negative
Jerry Gilson	Shirley Goedert
Bruce Wilburn	Leroy Walsh
Alternates	
Vernon Laubenstein	Wayne Lueptow
<i>Coach: Walter R. Smith</i>	

TWO RIVERS—CENTRAL SECTION—FOURTH PLACE

Affirmative	Negative
Robert Niquette	Mary Ann Karl
Audrey Zuehl	Marlene Simonis
Alternates	
Jack Hall	
<i>Coach: Hugh J. Clancy</i>	

RHINELANDER—CENTRAL SECTION—FOURTH PLACE

Affirmative	Negative
Donald Nellis	Carol Moe
George Rueckert	Caryl Edmund
Alternates	
Oliver Larson	Chester Engle
<i>Coach: Sherman Weinrich</i>	

GRANTSBURG—NORTHERN SECTION—FOURTH PLACE

Affirmative	Negative
Betty Lindberg	Virginia Northrup
Genevieve Grover	Ardyce Olson
Alternates	
Mary Ann Jensen	Ardell Sjolander
<i>Coach: S. E. Mattson</i>	

WISCONSIN RAPIDS—CENTRAL SECTION—FIFTH PLACE

Affirmative	Negative
James Randlett	Charles Lester
Lawrence Bocaner	Peter Bunde
<i>Coach: William R. Miller</i>	

NEW RICHMOND—NORTHERN SECTION—SIXTH PLACE

Affirmative	Negative
Verna Hermansen	James Doyle
Arvid Sather	Arthur Larson
Alternates	
Mary McDermott	Wanda Slipka
<i>Coach: Barry C. Robinson</i>	

SUMMARY OF STATE DEBATES

	Won	Lost		Won	Lost
Eau Claire St. Patrick	5	1	Amery	3	3
Sheboygan Central	5	1	Merrill	3	3
Milwaukee Concordia	5	1	Neenah	2	4
Sheboygan North	4	2	Port Washington	2	4
Wausau	4	2	Rhinelanders	2	4
Chippewa Falls	4	2	Grantsburg	2	4
Prairie du Chien			Two Rivers	2	4
Campion	4	2	Wisconsin Rapids	1	5
La Crosse Aquinas	3	3	New Richmond	0	6
Chippewa Falls McDonell	3	3			

JUDGES FOR STATE DEBATES

J. La Var Bateman, Graduate Assistant in Speech, University of Wisconsin
 Miss Gladys Borchers, Professor of Speech, University of Wisconsin
 Winston L. Brembeck, Assistant Professor of Speech, University of Wisconsin
 Herman H. Brockhaus, Lecturer in Speech and Dramatics, University Extension Division and University Department of Speech
 John E. Dietrich, Assistant Professor of Speech, University of Wisconsin
 H. L. Ewbank Sr., Professor of Speech, University of Wisconsin
 H. L. Ewbank Jr., Instructor in Speech, Milwaukee Extension Center
 Paul Gauger, Teacher of Speech, Wisconsin High School, University of Wisconsin
 Sherman Gunderson, State Teachers College, Oshkosh
 Frederick Haberman, Assistant Professor of Speech, University of Wisconsin
 Bruno Jacob, Ripon College, Secretary of National Forensic League
 Earl Kjer, Chairman of Speech Department, Eau Claire State Teachers College
 Ray Myers, Associate Professor of Speech, Milwaukee Extension Center
 Donald Olson, Graduate Assistant in Speech, University of Wisconsin
 Miss Grace Walsh, Director of Forensics, Eau Claire State Teachers College
 A. T. Weaver, Professor of Speech, University of Wisconsin
 Julian Williams, Graduate Assistant in Speech, University of Wisconsin

SUMMARY OF SECTIONAL DEBATE CONTEST REPORTS 1949

Northern Section

February 12—Senior High School—Chippewa Falls

<i>Schools</i>	<i>Won</i>	<i>Lost</i>
*Amery	6	0
*New Richmond	6	0
*Chippewa Falls	5	1
*Grantsburg	5	1
*Eau Claire St. Patrick's	5	1
*Chippewa Falls McDonell	4	2
Chetek	3	3
Ellsworth	3	3
Menomonie	3	3
Rice Lake	3	3
Eau Claire	3	3
Augusta	2	4
Barron	1	5
Park Falls	1	5
River Falls	1	5
Hudson	0	6
Ladysmith	0	6

Central Section

February 12—Central State Teachers College—Stevens Point

*Wausau	6	0
*Neenah	5	1
*Wisconsin Rapids	5	1
*Two Rivers	4	2
*Rhinelander	4	2
*Merrill	4	2
*La Crosse Aquinas	4	2
Tomah	3	3
Menasha	1	5
Kaukauna	1	5
Blair	1	5
Appleton	1	5
Sparta	0	6

Southern Section

February 12—Madison East High School

*Prairie du Chien Champion	5	1
*Sheboygan Central	5	1
*Sheboygan North	5	1
*Port Washington	4	2
*Milwaukee Concordia	4	2
Shorewood	3	3

* Schools starred entered State Debates.

<i>Schools</i>	<i>Won</i>	<i>Lost</i>
Fort Atkinson	3	3
Portage	3	3
Beloit	2	4
Whitewater College	2	4
Wisconsin High Madison	2	4
Beaver Dam	2	4
Fennimore	1	5
Lake Mills	1	5

SUMMARY OF DISTRICT DEBATE CONTEST REPORTS 1949

La Crosse District

January 30—La Crosse State Teachers College

*La Crosse Aquinas	4	2
*Blair	4	2
*Tomah	3	3
*Sparta	3	3
Richland Center	2	4
Arcadia	2	4

Milwaukee District

January 29—West Bend High School

*Sheboygan Central	6	0
*Sheboygan North	5	1
*Beaver Dam	5	1
*Port Washington	5	1
*Milwaukee Concordia	4	2
*Shorewood	4	2
Horicon	3	3
Kenosha Bradford Sr	3	3
Waukesha	3	3
West Allis Central	3	3
West Bend	3	3
Hartford	2	4
Menomonee Falls	2	4
Oostburg	1	5
Mayville	1	5
Racine Washington Park	1	5
Plymouth	0	6

Oshkosh District

January 29—Appleton High School

*Kaukauna	5	1
*Neenah	5	1
*Two Rivers	5	1
*Appleton	4	2
*Menasha	4	2

* Schools starred entered sectional debates.

<i>Schools</i>	<i>Won</i>	<i>Lost</i>
Ripon -----	3	3
Waupun -----	3	3
Marinette -----	2	4
Lena -----	1	5
Shawano -----	1	5
Kewaunee -----	0	6

Platteville District

January 29—Platteville State Teachers College

*Prairie du Chien Champion -----	5	1
*Fennimore -----	4	2
Boscobel -----	3	3
Lancaster -----	2	4
Blanchardville -----	1	5

Stevens Point District

January 29—Central State Teachers College

*Wausau -----	5	1
*Rhinelanders -----	4	2
*Merrill -----	4	2
*Wisconsin Rapids -----	4	2
Mosinee -----	3	3
Stevens Point -----	3	3
Waupaca -----	2	4
Medford -----	2	4
Antigo -----	0	6

Whitewater District

January 29—Wisconsin High School Madison

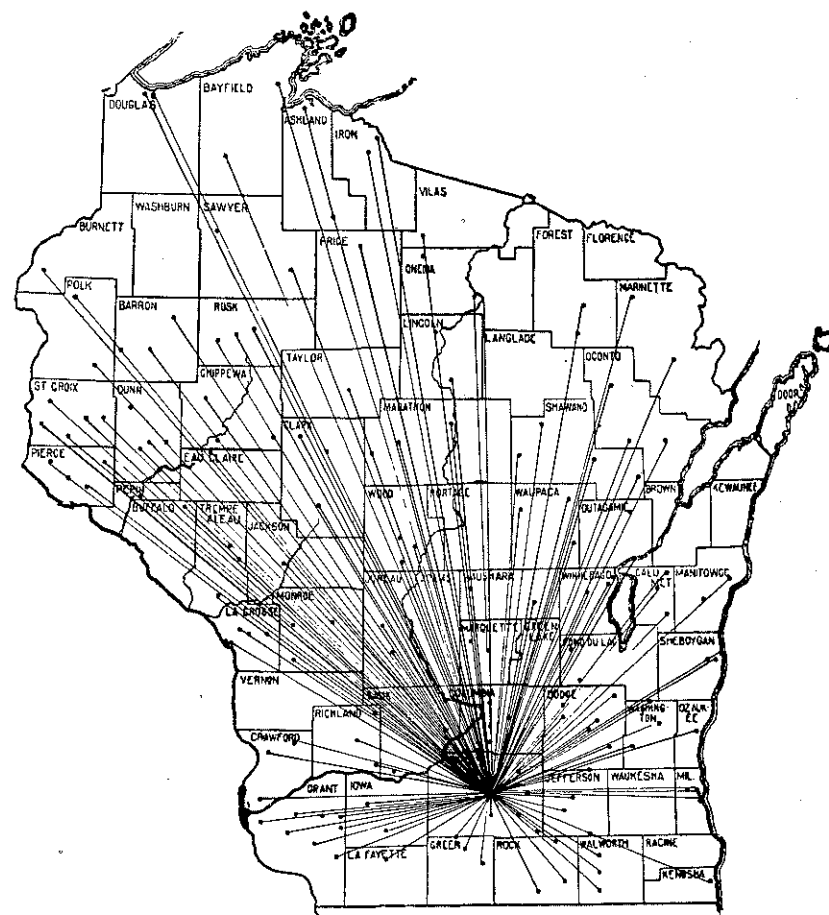
*Fort Atkinson -----	6	0
*Portage -----	5	1
*Wisconsin High School Madison -----	5	1
*Beloit -----	4	2
*Lake Mills -----	4	2
*Whitewater College -----	4	2
Janesville -----	3	3
Madison East -----	3	3
Watertown -----	3	3
Stoughton -----	3	3
Jefferson -----	2	4
Baraboo -----	0	6
Elkhorn -----	0	6
Whitewater City High -----	0	6

Eau Claire, River Falls and Superior Districts did not hold district tournaments but sent all eligible schools directly to the Northern Sectional Tournament.

* Schools starred entered sectional debates.

PARTICIPATION AT STATE SPEECH CONTEST

459 Contestants from 205 Schools



STATE SPEECH CONTEST

Bascom Hall, University of Wisconsin, April 23, 1949

HUMOROUS DECLAMATION

Eau Claire District

- Baribeau, Joy—Bruce
 Snoopopaths—Stephen Leacock
 Bragstad, Bernetta—Owen
 Huckleberry Finn—Mark Twain
 Buchanan, Roberta—New Auburn
 Glory in the Daytime—Dorothy Parker
 Dickman, Urvin—Chippewa Falls
 Ah Love, Ah Me—Max Steele
 Eke, Arlene—Bruce
 Guinea Pig—Ruth McKenny
 *Hirsch, Nancy—Eau Claire
 Snow White and the Seven Dwarfs—adapted from Walt Disney Script
 Jenks, Mary Ellen—Chippewa Falls
 Three to Make Ready—Catherine Turlington
 *Schill, Sally—Eau Claire
 Mamma and Uncle Chris—Kathryn Forbes
 Thompson, Louise—Stanley
 Marriage Proposal—Anton Chekhov

La Crosse District

- Bowen, Patricia—Bangor
 Snoopopaths—Stephen Leacock
 Dilley, Richard—Soldiers Grove
 Modern Sermon—or Mother Hubbard Sermon—Author not known
 Houser, Diana—Arcadia
 Curly Locks—Frances Turner
 Moseberg, Ethel—Galesville
 Sixteen—Maureen Daly
 Schroeder, Gene—Bangor
 The Education of Hyman Kaplan—Leonard Q. Ross

Milwaukee District

- *Bohn, Donald—Milwaukee Messmer
 Brothers Take a Bow—Leota Hulse Black
 Bowman, Barbara—Menomonee Falls
 Curly Locks—Frances Turner
 *Dornuf, Betty—Milwaukee Mercy
 The Show Must Go On and On—Edna Means
 Grim, Carol, Whitefish Bay
 Peter Projects—Mural Brady
 Kram, Fleury—Beaver Dam Wayland
 Beechnuts—Leota Hulse Black

* Participants who received "A" rating.

- *Rhode, Arleen—Kenosha
 Simple Seventeen—Stephen Leacock
 *Schach, William—Beaver Dam
 The Treasurer's Report—Robert Benchley
 Schatzmann, Joyce—Milwaukee Mercy
 The Show Must Go On and On—Edna Means
 *Schulze, Raymond—Milwaukee Concordia
 Dey Ain't No Ghosts—Emile Scarborough
 *Stark, Peter—Wauwatosa
 The Secret Life of Walter Mitty—James Thurber
 *Stiehlow, Gloria—Sheboygan North
 Arsenic and Old Lace—Joseph Kesserling
 *Wilburn, Bruce—Port Washington
 Snoopopaths—Stephen Leacock
 Ziegler, Elsa—Milwaukee Messmer
 Beechnuts—Leota Hulse Black

Oshkosh District

- *Blank, Audrey—Neenah
 Many Moons—James Thurber
 Bryan, Lois—Ripon
 Exit the Big Bad Wolf—Luella McMahon
 Carter, Marilyn—Eagle River
 Amateur Hour—Luella McMahon
 Ellis, Kathryn—Clintonville
 Anne of Green Gables—L. M. Montgomery
 Francois, Robert—Oconto
 The March of Schnitzelbaum—Lou Wack
 *Hetue, Roger—Two Rivers
 The Treasurer's Report—Robert Benchley
 *Lawson, Wayne—Ripon
 The Man Who Came to Dinner—George S. Kaufman and Moss Hart
 Lipsky, Robert—Kewaunee
 The Flea Gang's First Cigars—W. Henry Galbreath
 Levine, Sally—Marinette
 The Waltz—Dorothy Parker

Platteville District

- Fine, Charles—Mineral Point
 Abolishing the Heroine—Stephen Leacock
 *Kratochwill, Nancy—Muscoda
 Upstate—Edmonds
 *Mergen, David—Fennimore
 Abolition of the Heroine—Stephen Leacock
 *Russell, Patrick—Prairie du Chien Campion
 The Treasurer's Report—Robert Benchley

* Participants who received "A" rating.

River Falls District

- *Brigland, Dorothy—Frederic
 - How Dear to My Heart—Emily Kimbrough
- Carney, Kay—New Richmond
 - We Stump the Experts—
- Isaacson, Eugene—Baldwin
 - I Am a Brave American—
- *McJilton, Elizabeth—River Falls
 - Cheaper by the Dozen—Frank and Ernestine Gilbreath
- Nelson, Janice—Frederic
 - The Skin Game—
- Shern, Julia—Hammond
 - Hoodoo McTiggin's Christmas—Stephen Leacock
- Stansburg, Ann—Glenwood City
 - Jane—Booth Tarkington

Stevens Point District

- *Bauer, Tom—Wausau Sr.
 - No More Bananas—Robert Benchley
- Bergen, Shirley—Iola
 - Goodbye Sister—Edna Means
- *Brehm, Clyde—Colby
 - Snoopopaths—Stephen Leacock
- Dobbe, Edward—Rosholt
 - The Jukes Family—Frank Sullivan
- *Halmstad, Marian—Marathon
 - Modern Portia—Leota Hulse Black
- Jones, Kenneth—Endeavor
 - Abolishing the Heroine—Stephen Leacock
- Kocurek, Adair—Wautoma
 - Brothers Take a Bow—Leota Hulse Black
- Ockerman, Nancy—Tomahawk
 - Touchdown for the Duchess—Alan Green and Julian Brodie
- Swanson, John—Stevens Point
 - The Treasurer's Report—Robert Benchley
- *Wells, Colleen—Stratford
 - Punch, Brothers, Punch—Mark Twain

Superior District

- Cattoi, Marian—Hurley
 - The Man Who Came to Dinner—George S. Kaufman and Moss Hart
- Day, John—Superior Cathedral
 - The Jukes Family—Frank Sullivan
- *Gainey, Tom—Superior Cathedral
 - The Education of Hyman Kaplan—Leonard Q. Ross
- Menzies, Betty—Hurley
 - Dulcy—
- *Stevens, Jack—Hurley
 - Snoopopaths—Stephen Leacock

* Participants who received "A" rating.

Whitewater District

- Anderson, Paul—DeForest
 - Innocents Abroad—Mark Twain
- Bahr, Nathaniel—Hartland
 - My Name Is Aram—William Saroyan
- Baptist, Barbara—Beloit
 - On Skating—Cornelia Otis Skinner
- *Bassett, Terrance—Beloit
 - Snoopopaths—Stephen Leacock
- Benstead, Wayne—Darlen
 - My New Pink Suit—Stephen Leacock
- *Burrell, Patty—Madison Wisconsin High
 - Kid's Movie—Lorna Slocombe
- *Gibbons, Martha—Baraboo
 - Gertude the Governess—Stephen Leacock
- *Hagen, Judy—Edgerton
 - I Can't Breathe—Ring Lardner
- Krippner, Stanley—Fort Atkinson
 - Arsenic and Old Lace—Joseph Kesserling
- Larson, Barbara—Spring Green
 - Baby in the Bathroom—Alois Buckley Heath
- *Michel, Albert—Lake Mills
 - We Have with Us Tonight—Stephen Leacock
- Wetmore, Bette—Sun Prairie
 - China Blue Eyes—Alma Prudence Foss
- Williams, Josephine—East Troy
 - O Caplin! My Caplin!—Leonard Ross

NON-HUMOROUS DECLAMATION**Eau Claire District**

- Boldon, Richard—New Auburn
 - So Dear to My Heart—Sterling North
- Brunzlick, Doris—Augusta
 - Forever Now or Never—Philip Van Doren Stern
- *Einum, Catherine—Rice Lake
 - The Yellow Wallpaper—Charlotte Gilman
- Frederick, Gloria—Chippewa Falls
 - Another Such Victory—John D. Weaver
- Hawley, Beverly—Bruce
 - Illusion—Amzie Strickland
- *Knox, Kay—Eau Claire
 - Joan of Lorraine—From the play by Maxwell Anderson
- McLean, Marilyn—Spooner
 - Beyond the Last Mile—Gordon Morris
- Peil, Jeannette—Eau Claire St. Patrick
 - No Greater Than He—

* Participants who received "A" rating.

Reese, Kathy—Bruce
 Johnny Brown Stays Here—A. J. Cronin
 Rushman, Charlene—Chippewa Falls
 Peter Pan—Shelia Decker
 Speers, Jo Ann—Eau Claire St. Patrick
 Royal Road—Arthur Kuhl
 Wang, Carole—Neillsville
 Michael—Josephine Bacon

La Crosse District

Bratberg, Pauline—Holmen
 Clouds Over Canaan—Mary Harris Seifert
 Chapman, Arlene—Tomah
 Half a Gift—Robert Zacks
 De Witt, Patricia—Ontario
 The Tell-Tale Heart—Edgar Allan Poe
 Keegan, Sally—Richland Center
 The Child—Annie H. Donnell
 Merlo, Donna—Bangor
 The Question—Helen Waite Papashvily
 Olson, Donna—Blair
 Illusion—Amzie Strickland
 Sagmoen, Shirley—Westby
 Mary Stuart—Mary Ann Porterfield
 Steinke, Marion—Black River Falls
 The Eldest—Edna Ferber
 *Vruwink, Donna—West Salem
 Mama and the Graduation Present—Kathryn Forbes

Milwaukee District

Bearder, Maryann—Beaver Dam
 The Tell-Tale Heart—Edgar Allan Poe
 *Erdmann, Marilyn—Sheboygan North
 Mary of Scotland—Maxwell Anderson (from the play)
 Friese, Ana—Sheboygan Central
 The Winslow Boy—
 *Gabrielse, Marilyn—Oostburg
 The Snow Goose—Paul Gallico
 Janzer, Tom—Beaver Dam Wayland
 The Pit and the Pendulum—Edgar Allan Poe
 Jonason, Violet—Kenosha
 Joan of Lorraine—Maxwell Anderson (from the play)
 *Koltunski, Rose Marie—Milwaukee Mercy
 Illusion—Amzie Strickland
 *Kubiak, Virginia—Milwaukee Riverside
 The Steelworker—

* Participants who received "A" rating.

*Lawrence, Sue—West Allis Central
 Sixteen—Maureen Daly
 Lytle, Judith—Cedarburg
 Illusion—Amzie Strickland
 *Mazza, Joe—Milwaukee Riverside
 The Servant in the House
 McLaughlin, Joan—Port Washington
 Mama and the Hospital—Kathryn Forbes
 Pauls, Eleanor—Sheboygan Falls
 The Yellow Wallpaper—Charlotte Perkins Gilman
 Ruedebsch, Ellen—Mayville
 Miracle of the Bells—Janney
 Ulrich, Joyce—Horicon
 Joan of Arc—Schiller
 *Van Ouwkerk, Susan—Kohler
 The Corn is Green—Evelyn Williams
 *Walecka, Dirk—Wauwatosa
 The Slaver—Stephen Vincent Benet
 *Wallace, Jerry—Wauwatosa
 The Mountain Whipporwill—Stephen Vincent Benet
 Wittenberger, Lila—Hartford
 Snow Goose—Paul Gallico
 *Yanke, Rose—Menomonee Falls
 St. Joan—George B. Shaw

Oshkosh District

Baker, Edith—Marinette
 The Tell-Tale Heart—Edgar Allan Poe
 Cutler, Judy—North Fond du Lac
 In Rebecca's Room—Daphne du Maurier
 *Derus, Diane—Kaukauna
 Mary of Scotland—Maxwell Anderson (from the play)
 Lorenz, Mary—Shawano
 Our Town—Thornton Wilder
 Marsh, Sylvia—Shawano
 Peter Pan—Shelia Decker
 Meagher, Mitzi—Waupun
 The Sign of the Cross—Wilson Barrett
 Nasser, Urith—Kewaunee
 Futility—Caroline K. Allen
 Proper, Mary June—Kaukauna
 Tonight Will Be Different—Ruth Howland
 Stone, David—Kewaunee
 The Button—Robert Newman
 *Zoerb, Nancy—Two Rivers
 Our Town—Thornton Wilder

* Participants who received "A" rating.

Platteville District

Barber, Susan—Blanchardville
 Illusion—Amzie Strickland
 Bowers, Don—Boscobel
 Footsteps—adapted by Don Bower
 Johnson, Carol—Fennimore
 Into a Better Kingdom—Lloyd C. Douglas
 Nancolas, Barbara—Platteville
 The Show Must Go On—Anne Fuller

River Falls District

Larson, Lois—River Falls
 Johnny Brown Stays Here—A. J. Cronin
 Lundberg, Jeanne—Grantsburg
 Johnny Brown Stays Here—A. J. Cronin
 McDermott, Mary—New Richmond
 The Snow Goose—Paul Gallico
 *Omen, Carol—Hammond
 Mother in Mannville—Marjorie Kinnan Rawlings
 Peterson, Marilyn—Grantsburg
 The Greater Gift
 Tobias, Arlene—Siren
 Angel Wings—

Stevens Point District

*Ampe, Gerald—Greenwood
 Mississippi Magic—Carl Weber
 Babicky, Barbara—Wausau Jr. High
 To the Mountains—Paul Horgan
 Buchholz, Dorothy—Westfield
 Blessed Damosel—Cora Montgomery
 *Hart, William—Wausau Sr.
 Blood of the Martyrs
 Hestekind, Gloria—Marshfield Sr.
 The Hour Glass—Yeats
 Hoard, Jean—Mosinee
 The Soul of Ann Rutledge—Bernie Babcock
 Huernerfus, Bonnie—Wausau Sr.
 The Snake Pit—Mary Jane Ward
 Krueger, Jean—Medford
 Wuthering Heights—Bronte
 *Neale, Joan—Stevens Point
 The Yellow Wallpaper—Charlotte Perkins Gilman
 *Radke, Phyllis—Weyauwega
 The Littlest Angel—Charles Tazwell
 Ravey, Marlene—Endeavor
 Eve Speaks—Mark Twain

* Participants who received "A" rating.

Schuster, Carol—Merrill
 The Nightingale and the Rose—
 Smith, Irene—Edgar
 Hamlet—Shakespeare

Superior District

Ansell, Rita—Superior Central
 White Cliffs of Dover—Alice Duer Miller
 *Berthianne, Richard—Superior Cathedral
 The Mountain Whippoorwill—Stephen Vincent Benet
 Block, Marianne—Mellen
 Illusion—Amzie Strickland
 Converse, Jeanine—Superior East
 Honey—Leota Hulse Black
 Fagan, Joan—Superior Central
 Peter Pan—Shelia Decker
 Kempton, Robert—Superior Cathedral
 He Knew Lincoln—
 La Marche, Germaine—Hurley
 Illusion—Amzie Strickland
 Loomis, Beverly—Hurley
 Macbeth—Shakespeare
 Rooney, Marlys—Superior Cathedral
 The Hired Man—
 Sansdsten, Elizabeth—Ashland
 The Bright Promise—Richard Sherman
 Scott, Joanne—Superior Central
 Renascence—Edna St. Vincent Millay
 Stremski, Gloria—Hurley
 On Borrowed Time—Paul Osborne
 *Swee, Yolanda—Hurley
 The Finger of God—William Callahan

Whitewater District

Ambrus, Gertrude—Pewaukee
 Into a Better Kingdom—Lloyd C. Douglas (from The Robe)
 Avers, Annette—Portage
 The State of the Union—Howard Lindsay and Russell Grouse
 *Booth, Carol—Oregon
 The Last Leaf—O'Henry
 Brandt, Francoise—Delavan
 The Creation—James Welden Johnson
 Fliegel, Margaret—De Forest
 Illusion—Amzie Strickland
 Fowlkes, Nancy—Madison Wisconsin High
 "37"—
 *Fredrick, Barbara—Fall River
 White Cliffs of Dover—Alice Duer Miller

* Participants who received "A" rating.

- *Graham, Rosemary—Delavan
The Condemned—Courtney Ryley Cooper
- Grisham, Marjorie—Sharon
The Little Black Boys—Clara Laidlaw
- *Jahr, Elwood—Middleton
Night Bell—John M. Martin
- *Kanter, June—Beloit
Sixteen—Maureen Daly
- *Wenger, Donna—Monroe
Joan of Lorraine—Maxwell Anderson

ORIGINAL ORATORY

Written by the Student

Eau Claire District

- Crane, Julia—Chippewa Falls
Human Race on Trial
- Rasmussen, Blanche—Bruce
The Prelude
- Tanner, Alice—Eau Claire
The Tragic Victory
- Wright, Jeanne—Rice Lake
Are We Biting Off More Than We Can Chew?

La Crosse District

- *Anderson, Beatrice—Blair
Jane Brown
- Nanstad, Dale—Blair
Inches of Dirt
- *Pfaff, Douglas—Melrose
Power of Education
- Synstby, Ardo—Westby
Blood of the Earth

Milwaukee District

- Abraham, Don—Sheboygan Central
Our Constitution—Worth Having and Worth Defending
- *Axtel, Roger—Kenosha
I Am an American
- Bohman, Mary—Milwaukee Mercy
I Speak for Democracy
- Buckman, James—Milwaukee Concordia
The Death of a Nation
- Dretke, James—Milwaukee Concordia
Communism, The Greatest Menace to Democracy and World Peace
- *Erickson, Paul—Port Washington
The Bill of Rights in an Atomic Age

* Participants who received "A" rating.

- *Gerlach, Connie—Wauwatosa
A Question of Survival
- *Hetland, Joel—West Bend
Behind the Mental Curtain
- Laubenstein, Vernon—Port Washington
In Defense of the American Bill of Rights
- Murray, Mary Ann—Milwaukee Messmer
A Labor and Management Plan
- *Waldschmidt, Elmer—Milwaukee Messmer
The Constitution—A Pattern for World Peace

Oshkosh District

- Antonuk, John—Crandon
Hope for the World
- Bocher, Beryl—Two Rivers
Democracy Speaks
- Burr, John—Ripon
The First Amendment of Our Bill of Rights
- *Cudd, Kermit—Shawano
The Price of Liberty
- *Niquette, Robert—Two Rivers
This Is Our America

Platteville District

- Hennessey, Jean—Highland
Communism
- Johnson, Loren—Cobb
Our American Heritage
- *Kersten, Campion—Prairie du Chien Campion
Personal Rights Under the Constitution
- Kriewald, Joan—Platteville
Great Lakes—St. Lawrence Deep Waterway
- *McVay, Betty Lou—Platteville
Our Constitution—Worth Having, Worth Defending
- Peterson, Robert—Mount Horeb
The Constitution—A Barrier Against Tyranny
- *Scullen, Mary—Boscobel
There Go I

River Falls District

- Foster, Ruth—River Falls
It Can Happen to Us
- Hagestad, Marcus—River Falls
One World
- Hennessey, Jane—Hudson
The Battle for German Youth
- Jensen, Mary Ann—Grantsburg
Trapped—We Can Escape

* Participants who received "A" rating.

Sherm, Sharon—Hammond
Our Mental Institutions
Vaughn, Mary Louise—Hudson
Is Modern Man Obsolete?

Stevens Point District

*Gray, June—Endeavor
Too Many Are Being Carried into Church
*Herath, Kent—Wausau Sr.
The Constitution—Citadel of Freedom
Massen, Ronald—Adams-Friendship
What Will We Do About Child Labor?
*Moberg, Glenn—Stevens Point
An American's Rights and Responsibilities
*Spry, Bonnie—Granton
War Trials
Stremikis, Jeannette—Greenwood
Tenants or Citizens

Superior District

Christoffersen, Donna—Draper-Loretta
Are We a Problem?
Koran, Gertrude—Butternut
Education—Your Responsibility
Morris, Robert—Draper-Loretta
No Time to Wait
Ostrander, Helen—Woodruff
It Can Happen to You

Whitewater District

Behling, Lanny—Janesville
The Threat from Within
*Church, Sharon—Lodi
Which Way America?
*Goodman, Sally—Portage
From Plymouth Rock to the Dust Bowl
Healy, Helen—Cambria
That Priceless Seed
Holmes, Mary—Columbus
The Unwanted
Langer, John—Baraboo
The Problem
Munson, Wayne—Deerfield
Confusion or Safety?
Virchow, Delores—Sun Prairie
Like Father, Like Son

* Participants who received "A" rating.

NON-ORIGINAL ORATORY

Eau Claire District

Bollman, Ann—Chippewa Falls
The Saintly Scientist—Clair Booth Luce
Clausen, Berniece—Bruce
The Years Between—Jo Ann Westervelt
Gerner, George—Eau Claire
Did We Win the War?—Cynthia Garness
Kranzfelder, Roma—Eau Claire St. Patrick
Education for Freedom—Robert Hutchins
*Smith, Benita—Menomonie
She Called Me a Snob (Winning Oration—1942)
White, Betty Lou—Eau Claire St. Patrick
Is This America?—Phyllis Lahti (Winning Oration—1948)

La Crosse District

Adams, Frederick—Soldiers Grove
The Big Parade—Wesley Carty (revised by R. P. Hibbs)
Anderson, Carole—West Salem
Is This America?—Phyllis Lahti (Winning Oration—1948)
Bradley, Larry—Blair
Our Beachheads of the Future—Clement Lueck
Hendrickson, Ronald—Holmen
Myth Called Progress—Paul Kuenning (Winning Oration—1948)
Knutson, Richard—Westby
Between Closed Doors—Calvin Peterson (Winning Oration—1948)
Kolve, Verdel—Blair
We Regret to Inform You—Helen White (Winning Oration—1943)
Sherwood, Robert—Gays Mills
Were You There?—Ralph Osborne (Winning Oration—1948)
Warsaw, Therese—Kendall
Is This America?—Phyllis Lahti (Winning Oration—1948)

Milwaukee District

*Bauer, Tom—Beaver Dam
Skulls Are White—Robert Carlton (Winning Oration—1948)
Buenting, Howard—Cedarburg
Stand Up and Be Counted—Cecil B. DeMille
*Butterfield, Don—Wauwatosa
Memo on Anti-Semitism—Philip Wylie
Dede, John—Milwaukee Concordia
Introduction to the Knapp Murder Case—Dan Webster
*Dirkse, Marianne—Oostburg
The Big Parade—By Wesley Carty (revised by R. P. Hibbs)
Holcomb, Helen—Waldo
Achievement Through Struggle—George Maxey
*Holt, Glen—Kenosha
Were You There?—Ralph Osborne (Winning Oration—1948)

* Participants who received "A" rating.

- *Murray, Don—Kenosha
The Myth Called Progress—Paul Kuenning (Winning Oration—1948)
- Muth, Joan—Milwaukee Mercy
On a Note of Triumph—Norman Corwin
- Nickerson, John—Milwaukee Concordia
New England Civilization—William Frye
- *Prokupek, Paul—West Allis Nathan Hale
The Myth Called Progress—Paul Kuenning (Winning Oration—1948)
- Ruskauff, Donald—Port Washington
Our Beachheads of the Future—Clement Lueck
- *Schlaht, Pat—Sheboygan Central
Were You There?—Ralph Osborne (Winning Oration—1948)
- Stramm, Dorothy—Sheboygan Falls
Will the Comic Beginning Have a Tragic End?—Emily Combs (Winning Oration—1948)
- Vruwink, Paul—Cedar Grove
The Monster in the Public Square—Howard Grossman
- Zautcke, Donald—Cedarburg
An All-Embracing Americanism—William D. Upshaw

Oshkosh District

- Barrette, Gary—Coleman
Skulls Are White—Robert Carlton (Winning Oration—1948)
- Brault, James—New London
Skulls Are White—Robert Carlton (Winning Oration—1948)
- *Hall, Donald—Eagle River
While Rome Burns—Cecil B. DeMille
- Lyons, Miriam—Eagle River
Our Heroes Come Home—John M. Martin
- Markert, Barbara—Sturgeon Bay Sevastopol
The Cocktail Hour—Gladys Simmons
- Popeck, Jack—Clintonville
Why?—Robert Libbot
- *Rabenhorst, Arthur—Denmark
Neither Free Nor Equal—Alyce Purdham (Winning Oration—1948)
- Rogalski, Georgiann—Two Rivers
Utopia or Oblivion—Robert Bishop Jr.
- *Rohan, Mary—Kaukauna
The Constitution and the Common Man—

Platteville District

- Gunderson, Helen—Mount Horeb
Will the Comic Beginning Have a Tragic Ending—Emily Combs (Winning Oration—1948)
- Henderson, George—Linden
Crossroads of America—Dr. Ruth Gurber
- *Key, Bob—Patch Grove
The Big Parade—By Wesley Carty (revised by R. P. Hibbs)

* Participants who received "A" rating.

- *Krieg, David—Prairie du Chien Champion
From Cave to Cave—George S. McGovern (Winning Oration—1946)
- *Radel, Lawson—Muscodia
If the People Can Wage a War—Mac Cripe (Winning Oration—1947)
- *Wills, Gary—Prairie du Chien, Champion
How to Tell Your Friends from the Apes—Raymond McCall (Winning Oration—1948)

River Falls District

- Borg, Daniel—Hudson
How to Face and Overcome Worries—Howard Whitman
- Brevold, Bette—Amery
Those Not So Fortunate—Donna Comstock (Winning Oration—1948)
- *Gunderson, Mavis—Woodville
Are We Asking Too Much—Mary Beth Lee (Winning Oration—1948)
- Larson, Arthur—New Richmond
Moonlight and Poison Ivy
- Lindberg, Betty—Grantsburg
All Men Are Grass—Lily Ann Hansen (Winning Oration—1948)
- *Ryan, Diane—Hammond
Neither Free Nor Equal—Alyce Purdham (Winning Oration—1948)

Stevens Point District

- Cook, Bill—Stevens Point
The Man With a Hoe—John Martin
- *Crosby, Lynette—Merrill
The Years Between—Joann Westervelt
- *DeRocher, Robert—Tomahawk
America Faces Destiny—Thurman Sensing
- Gustafson, Arlene—Unity
Our Heroes Come Home—John M. Martin
- Miller, Harold—Greenwood
For Whom the Bells Toll—Lt. James H. Case
- Stevens, Ernie—Tigerton
The Big Parade—Wesley Carty (revised by R. P. Hibbs)

Superior District

- *Albert, Donald—Tony
The Big Parade—Wesley Carty (revised by R. P. Hibbs)
- Barany, Jean—Ondossagon P. O. Ashland
Those Not So Fortunate—Donna Comstock (Winning Oration—1948)
- Hathaway, Larry—Draper—P. O. Loretta
The Big Parade—Wesley Carty (revised by R. P. Hibbs)
- *Herbert, Robert—Superior Cathedral
Witch Hunt—Karlton Rosholt (Winning Oration—1948)
- Nork, Loretta—Draper—P. O. Loretta
Is This America?—Phyllis Lahti (Winning Oration—1948)

* Participants who received "A" rating.

Whitewater District

- Alwin, Neil—Prairie du Sac
 Youth and Crime—J. Edgar Hoover
 *Bruder, Robert—Portage
 The Jew—International Whipping Boy—Lore Gaebler (Winning Oration—1948)
 Buenger, Jim—Waterford
 Our Beachheads of the Future—Clement Lueck
 Burns, Larry—Elkhorn
 The Unknown Soldier—
 Carr, Dick—Janesville
 America and the Americans—
 Cotherman, Mildred—Monroe
 The Window Pane—
 Dykstra, Elaine—Cambria
 The Jew—The International Whipping Boy—Lore Gaebler (Winning Oration—1948)
 Heiser, Ralph—Reedsburg
 How to Tell Your Friends from the Apes—Raymond McCall (Winning Oration—1948)
 *Lahneis, Mary—Lake Mills
 And Suddenly Death—F. C. Furnas
 Nitz, Dolores—Clinton
 Are We Asking Too Much—Mary Beth Lee (Winning Oration—1948)
 *Schmitz, Robert—Sauk City
 Sick Behind Bars—Gilbert Weldy (Winning Oration—1948)
 Stolen, Audrey—Stoughton
 Will the Comic Beginning Have a Tragic Ending—Emily Combs (Winning Oration—1948)

EXTEMPORANEOUS READING**Eau Claire District**

- Catura, Sally—Rice Lake
 Anne Marbury Hutchinson
 Donnelly, Margaret—Augusta
 Florence Nightingale
 Dopkins, Heather—Chippewa Falls
 Anne Marbury Hutchinson
 Hogle, Nancy—Chippewa Falls
 Marion Anderson
 Jankoski, Mavourneen—Stanley
 Marion Anderson
 *Olson, Faith—Rice Lake
 Evangeline Booth
 *Quella, Jeanne—Eau Claire
 Franklin Delano Roosevelt
 Rude, Barbara—Neillsville
 Ernest Bevin

* Participants who received "A" rating.

- *Southers, Robert—Eau Claire St. Patrick
 Harry S. Truman
 *Woodmansee, Louise—Bruce
 William Allen White

La Crosse District

- Bucklin, Rita—Onalaska
 General Lucius D. Clay
 Doyle, Mary—Sparta
 Franklin Delano Roosevelt
 Haaland, Elizabeth—West Salem
 Margaret Chase Smith
 Henthorn, Beverly—New Lisbon
 Dick Bong
 Niebuhr, Donna Lee—Wonewoc
 Anne Marbury Hutchinson
 Raymond, Mary—Trempealeau
 Evangeline Booth
 Starr, Helen—Richland Center
 Theodore Roosevelt

Milwaukee District

- Barr, Elizabeth—Port Washington
 Trygve Lie
 *Delfeld, Anna Mae—Mayville
 Mahatma Gandhi
 *Dupuis, Joan—Beaver Dam
 Mark Twain
 Gilson, Susan—Port Washington
 Theodore Roosevelt
 Heideman, Dorothy—Oostburg
 Harriet Tubman
 Kovenock, Marcia—Whitefish Bay
 Will Rogers
 Lawson, Ann—West Bend
 Evangeline Booth
 McQuaid, Sally—Milwaukee Riverside
 General Lucius D. Clay
 Miller, Elizabeth—West Allis Nathan Hale
 Marion Anderson
 *Moffitt, Bettie Sue—Wauwatosa
 Will Rogers
 Randall, Beverly—Hartford
 Abigail Adams
 Webb, Beverly—Port Washington
 William Penn
 *Wieczorek, Louise—Milwaukee Mercy
 Father Flanagan

* Participants who received "A" rating.

Oshkosh District

Christiansen, Jane—Berlin
 Mark Twain
 Heasl, Sally—Peshtigo
 William Allen White
 *Kroenke, Betty—Shawano
 Babe Ruth
 Neimy, Patsy—De Pere
 Susan B. Anthony

Platteville District

Bahl, Kathleen—Fennimore
 Susan B. Anthony
 Fischer, Jean—Dodgeville
 William Allen White
 Lippoldt, Mary Jo—Platteville
 Dick Bong
 Peterson, Charlotte—Darlington
 Martha Washington
 Sanger, Kathryn—Boscobel
 Dr. Alexander Fleming

River Falls District

Benson, Janis—River Falls
 Marie Curie
 Deans, Margery—Hammond
 Will Rogers
 Doolittle, Mary—River Falls
 Dean Acheson
 *Ekstrom, Marie—Grantsburg
 Trygve Lie
 Lawater, Donna Jean—Spring Valley
 Babe Ruth

Stevens Point District

Bloczynski, Mary Lou—Athens
 Albert Schweitzer
 Cannady, Donald—Wausau Junior
 Dick Bong
 *Darling, Thelma—Montello
 Florence Nightingale
 *Duchac, Joe—Antigo Senior
 William Penn
 *McCrory, Joanne—Wausau
 Martha Washington
 *Oakes, Nancy—Wisconsin Rapids
 Susan B. Anthony
 Segar, James—Merrill
 Mahatma Gandhi

* Participants who received "A" rating.

Superior District

*Brace, Shelly—Phillips
 Susan B. Anthony
 Ekman, Ruth—Winter
 Abigail Adams
 Lillstrom, Arloa—Hurley
 Trygve Lie
 Porter, Faith—Ashland
 Babe Ruth

Whitewater District

Burgy, Lois—Monroe
 Dean Acheson
 *Crump, Philip—Lake Mills
 Dorothea Lynde Dix
 Dokken, Marilyn—Oregon
 George Washington Carver
 Jueds, Nancy—Madison Wisconsin High
 Franklin Delano Roosevelt
 Krueger, Gerry Pat—Edgerton
 Dorothea Lynde Dix
 Peterson, Lois—Fort Atkinson
 George Washington Carver
 Pierce, Linda—Deerfield
 Martha Washington
 Stromer, Phyllis—De Forest
 Mahatma Gandhi
 Wexler, Mike—Janesville
 Leonardo Da Vinci
 Woods, Sherwin—Madison Wisconsin High
 Dean Acheson

EXTEMPORANEOUS SPEAKING**Eau Claire District**

Dean, Larry—Ladysmith
 The Federal Budget
 *Donaldson, Richard—Eau Claire St. Patrick
 The Hoover Commission
 *Mathison, Richard—Eau Claire
 National Defense
 McCluskey, Mary—Eau Claire St. Patrick
 Truman's Fair Deal
 Thorpe, Janet—Chippewa Falls
 Israel, A New Nation

* Participants who received "A" rating.

La Crosse District

- *Gleason, Hugh—Arcadia
Israel, A New Nation
- Hellekson, Eva—Blair
The Hoover Commission
- *Ninneman, Peter—Tomah
Communist Triumphs in China

Milwaukee District

- *Borman, Gary—West Allis Central
China
- *Conway, Dick—Whitefish Bay
The Cold War With Russia
- Gilson, Jerry—Port Washington
National Defense
- Hillers, Delbert—Milwaukee Concordia
Advance of Modern Science
- *Indermuehle, Phyllis—West Bend
The National Budget
- *Kuehn, Charles—Sheboygan Central
The Cold War With Russia
- Lepp, Jerry—Kenosha
The Atlantic Pact
- McKoane, Joan—Milwaukee Messmer
Our Job in Germany
- Moeller, Marilyn—West Bend
Our Job in Germany
- *Peterson, Bruce—West Allis Central
The Hoover Commission
- *Walsh, Leroy—Port Washington
Our Job in Germany
- Wolf, Carol—Beaver Dam
The 81st Congress

Oshkosh District

- Auerswald, Paul—Marinette
Behind the Iron Curtain
- *Derus, Lorena—Kaukauna
England's Venture Into Socialism
- Heckner, Howard—Neenah
Behind the Iron Curtain
- Nordlander, Robert—Menasha
Truman's Fair Deal

* Participants who received "A" rating.

Platteville District

- Billings, Virginia—Boscobel
The Work of the United Nations Agencies
- Collins, Patricia—Cazenovia
Broadening Social Security
- Flesch, Jerry—Potosi
Broadening Social Security
- *Solon, Daniel—Prairie du Chien Campion
National Defense

River Falls District

- Anderson, Dick—River Falls
The Atlantic Pact
- *Barbo, Dorothy—Hammond
The Problem of Farm Prices
- Crunn, William—Ellsworth
Truman's Fair Deal
- Doyle, James—New Richmond
Communist Triumphs in China
- Grover, Genevieve—Grantsburg
England's Venture Into Socialism
- *Northrup, Virginia—Grantsburg
Broadening Social Security

Stevens Point District

- Dana, Carroll—Wausau Sr.
Israel, A New Nation
- Goetz, Florence—Marathon
Communist Triumphs in China
- Loeffler, David—Wausau Jr.
Indonesia
- Rice, Howard—Marshfield Sr.
England's Venture Into Socialism

Superior District

- Brenholt, Floyd—Ondossagon Ashland
The North Atlantic Pact
- *Endrizzi, Rosemary—Hurley
Indonesia

Whitewater District

- Cornish, Paula—Fort Atkinson
Our Federal Budget
- Haydon, John—Madison Wisconsin High
The Marshall Plan
- Krauss, Kathryn—Monroe
The Cold War With Russia

* Participants who received "A" rating.

- *Kreklow, Wayne—Jefferson
Indonesia
- Moldenhauer, Nancie—Monroe
Our Job in Germany
- *Ozburn, Bob—Poynette
The Marshall Plan
- *Raubacher, George—Janesville
Indonesia
- Sweeney, Leo—Verona
The Marshall Plan

FOUR-MINUTE SPEECH

Written by the Student

Eau Claire District

- *Herman, Carol—Rice Lake
Youth of Today
- Kuehn, Audrey—Chippewa Falls
And the World Was Purified

La Crosse District

- *Bloyer, Doris—Tomah
An American Today
- Hubanks, Phyllis—Richland Center
With Liberty and Justice to All
- Severson, Gloria—Galesville
The Problem of the American Indian
- Zajacek, Geraldine—Gays Mills
It Can't Happen

Milwaukee District

- Bartling, Paul—Concordia Milwaukee
Communist Infiltration
- Boyer, Ken—Wauwatosa
Racial Prejudice—Campus Style
- Bovee, Douglas—West Allis Central
Myopic Athletics
- Ebner, James—Menomonee Falls
The Role of the Negro in 1949
- *Gregory, Phyllis—Milwaukee Mercy
Juvenile Delinquency
- *Komschlies, Charles—West Allis Nathan Hale
Give It Back
- *LeDuc, Don—South Milwaukee
I Believe in Democracy
- Perry, Irene—Port Washington
America's Only Choice in a Peaceless World

* Participants who received "A" rating.

- Preston, Patricia—Wauwatosa
Mental Health—Public Enemy No. 1
- *Schneider, George—Port Washington
The Facts the A. M. A. Can't Answer
- Slowey, Jack—West Allis Central
Peace in an Atomic Age
- *Smirl, Gerald—Milwaukee Riverside
Democracy or Communism in the Classroom

Oshkosh District

- Cors, Virginia—Ripon
The Knock at Your Door
- *Rhein, Leroy—Lomira
Our Number One Social Problem
- Weller, Harris—Clintonville
Americans, Wake Up

Platteville District

- Floerke, Marie—Platteville
The President
- Murphy, Jack—Mount Horeb
Aggressor of World Peace—Communism
- *Scott, Burton—Muscodia
Stalin's Russia

River Falls District

- Kyslen, Joyce—Hammond
Why Kill Our Town?
- *Miller, Ardyce—Grantsburg
You Can Help
- *Panzer, Delores—Grantsburg
Our American Heritage
- *Porter, Rosemary—Hudson
Safe Always

Stevens Point District

- Hansen, Natalie—Waupaca
The North Atlantic Pact
- Kurth, Patricia—Eau Claire St. Patrick
Tomorrow's World
- Luttrell, Audrey—Wausau Jr.
The Dreaded Disease
- *Schumacher, Harold—Marathon
Doom of Our Fish—Pollution
- Sternberg, Beverly—Wausau Senior
Federal Aid to Education

* Participants who received "A" rating.

Superior District

Dary, William—Hurley
The Housing Situation
Greassner, Marjorie—Superior Cathedral
Penetrating the Iron Curtain

Whitewater District

Church, Gilbert—Elkhorn
The Vatican vs. Communism
Dunn, Marlene—Fall River
Juvenile Delinquency
Elder, Ted—Beloit
The New Cooperative Movement
*Hagen, Louise—Edgerton
Creaking Machinery
Klein, Eileen—Madison Wisconsin High
Accusation
Moran, Duane—De Forest
The Atlantic Pact
*Provot, Ellen—Fort Atkinson
"I See'd the Man in the Movie Do It"
Voss, Don—Spring Green
Ideals and Peace

* Participants who received "A" rating.

JUDGES 1949—STATE SPEECH CONTEST

J. La Var Bateman, Graduate Assistant in Speech, University of Wisconsin
Miss Gladys Borchers, Professor of Speech, University of Wisconsin
Winston L. Brembeck, Assistant Professor of Speech, University of Wisconsin
Herman H. Brockhaus, Lecturer in Speech and Dramatics, University Extension and University Speech Dept.
Jonathan Curvin, Associate Professor of Speech, University of Wisconsin
Robert E. West, Professor of Speech Pathology, University of Wisconsin
H. L. Ewbank, Sr., Professor of Speech, University of Wisconsin
Paul Gauger, Teacher of Speech, Wisconsin High School, University of Wisconsin
Ronald Gee, Graduate Assistant in Speech, University of Wisconsin
Sherman Gunderson, State Teachers College, Oshkosh
Miss Ruth Gober, Speech Department, State Teachers College, Platteville
Frederick Haberman, Assistant Professor of Speech, University of Wisconsin
Bruno Jacob, Sec'y of National Forensic League, Ripon College
Earl Kjer, Chairman of Speech Department, Eau Claire State Teachers College
Mrs. Lorna Lengfeld, Graduate Assistant in Education, University of Wisconsin
Miss Carrie Rasmussen, Madison Public Schools
G. F. Rassweiler, Instructor in Speech, University Extension Center, Sheboygan
Donald Smith, Teacher of Speech, Wisconsin High School, University of Wisconsin
Mrs. Lillian Wagner, Graduate Assistant in Speech, University of Wisconsin
Miss Grace Walsh, Director of Forensics, Eau Claire State Teachers College
A. T. Weaver, Professor of Speech, University of Wisconsin
Julian Williams, Graduate Assistant in Speech, University of Wisconsin

SUMMARY OF DISTRICT SPEECH CONTEST REPORTS 1949

Eau Claire District

April 2—Eau Claire State Teachers College	
Member schools in district	38
Schools participating in contests	29
Contestants	144
A's	53
B's	67
C's	24
Schools eligible to enter state contest	15

La Crosse District

April 19—La Crosse State Teachers College	
Member schools in district	44
Schools participating in contests	41
Contestants	139
A's	45
B's	69
C's	25
Schools eligible to enter state contest	21

Milwaukee District

April 2—Port Washington High School	
Member schools in district	46
Schools participating in contests	37
Contestants	203
A's	99
B's	97
C's	7
Schools eligible to enter state contest	27

Oshkosh District

April 9—Appleton High School	
Member schools in district	66
Schools participating in contests	55
Contestants	214
A's	45
B's	125
C's	44
Schools eligible to enter state contest	22

Platteville District

April 9—Platteville State Teachers College	
Member schools in district	44
Schools participating in contests	36
Contestants	110

A's	35
B's	57
C's	18
Schools eligible to enter state contest	17

River Falls District

April 9—River Falls State Teachers College	
Member schools in district	29
Schools participating in contests	27
Contestants	97
A's	42
B's	49
C's	6
Schools eligible to enter state contest	14

Stevens Point District

April 5—Stevens Point State Teachers College	
Member schools in district	53
Schools participating in contests	47
Contestants	169
A's	53
B's	85
C's	31
Schools eligible to enter state contest	29

Superior District

April 8—Hurley High School	
Member schools in district	26
Schools participating in contests	20
Contestants	234
A's	38
B's	45
C's	151
Schools eligible to enter state contest	14

Whitewater District

April 9—Fort Atkinson High School	
Member schools in district	64
Schools participating in contests	57
Contestants	215
A's	72
B's	96
C's	47
Schools eligible to enter state contest	35

FINANCIAL STATEMENT

Balance June 30, 1948 ----- \$1,027.77

Income:

Dues (includes check exchange) -----	\$2,740.00
Sale of Materials -----	695.40
State Drama Contest -----	162.20
Speech Institutes -----	342.92
State Debate Contest -----	251.60
State Speech Contest -----	459.00
Refund on unsold material -----	7.20

\$4,658.32 -----
\$5,686.09

Disbursements:

Materials for Resale -----	\$ 793.58
Board and Committee Expense -----	558.26
Printing -----	868.50
Speech Institute Expense -----	335.22
Awards (Banners, Medals, Ribbons) --	1,104.69
Cuttings -----	42.50
State Drama Contest -----	302.55
Mimeo. Postage and Supplies -----	487.06
State Debate Contest -----	465.20
State Speech Contest -----	302.23
Misc. (Bonds for Jones & Schacht) --	10.00
Refunds (Overpayment of dues) -----	14.30
Bank Service Charge -----	12.58
Check Exchange -----	4.10

\$5,300.77 -----

Balance June 30, 1949 ----- \$ 385.32

We, the undersigned, have carefully examined the financial records of the Wisconsin High School Forensic Association and find them correct in every detail. We further certify that the financial picture as presented in the treasurer's report printed above gives an accurate account of the financial condition of the Association as of June 30, 1949.

Signed

A. MOLDENHAUER, *Chairman,*
Stevens Point District

H. J. DUWE, *Business Manager*
University Extension Division

INTERPRETING OUR FINANCIAL REPORT

The difference between the very favorable balance at the *beginning* of this last fiscal year and the less favorable balance at the *end* of the year calls for an explanation.

The expenditure for awards includes an advance purchase of drama and debate medals for 1949-50. This amounts to approximately \$300.

We showed a deficit in running the state drama and debate contests. Most of this can be accounted for by the board's policy of providing free dinners to the drama contestants and free luncheons to the debaters. The Board has voted to abandon this practice next year.

There was a deficit in the resale of materials, although only half of that of 1947-48. We have on hand a considerable number of "Forty Four-Minute Cuttings from Wisconsin History" the sale of which will materially reduce this deficit.

Printing costs are almost double that of last year. Our September News Letters and supplements of the constitution and rules, account for a large part of this. Printing includes covers for our mimeographed news letters (a new expense) and several hundred dollars worth of stamped envelopes. Our mimeographing, postage and supply costs are less than those of last year.

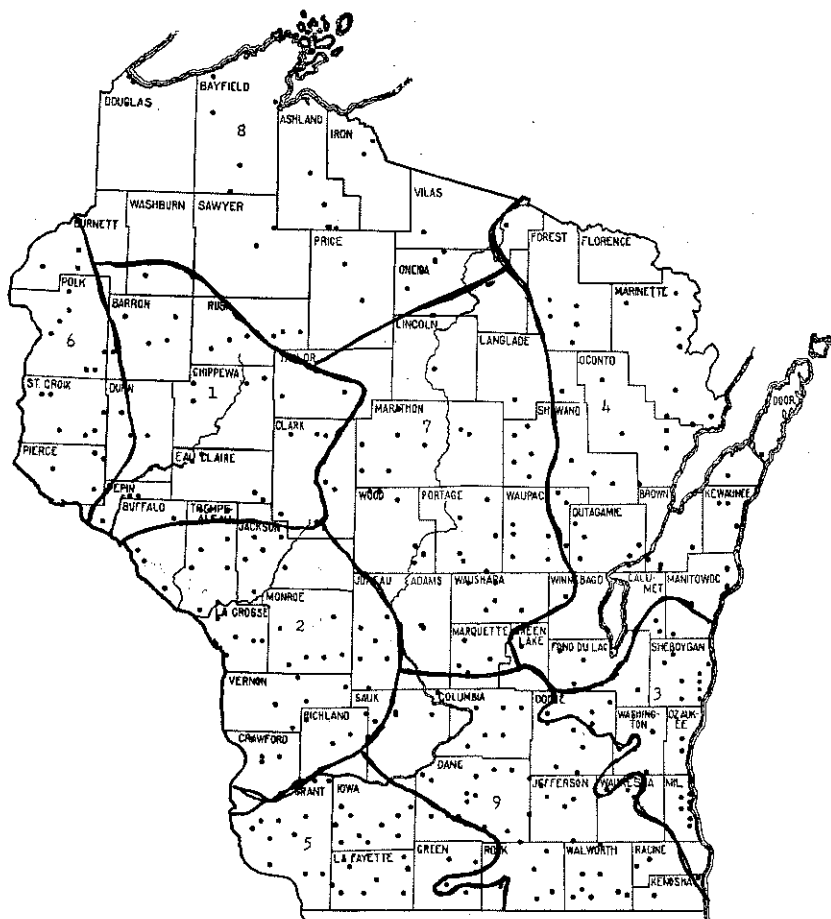
It would appear that the balance at the end of next fiscal year will be considerably improved, other factors remaining equal, by the explanation given above.

ROBERT H. SCHACHT

Secretary-Treasurer

Wisconsin High School Forensic Association

MAP SHOWING BOUNDARIES OF THE DISTRICTS AND
LOCATION OF MEMBER SCHOOLS



1. Eau Claire District
2. La Crosse District
3. Milwaukee District
4. Oshkosh District
5. Platteville District
6. River Falls District
7. Stevens Point District
8. Superior District
9. Whitewater District

Northern Section
Districts 1, 6, 8

Central Section
Districts 2, 4, 7

Southern Section
Districts 3, 5, 9

MEMBERSHIP OF THE ASSOCIATION 1948-49

<i>School</i>	<i>District</i>	<i>No. Years Registered</i>
Abbotsford	Stevens Point	18
Adams—P. O. Friendship	Stevens Point	18
Albany	Platteville	17
Algoma	Oshkosh	24
Alma	La Crosse	24
Alma Center	La Crosse	19
Almond	Stevens Point	9
Altoona	Eau Claire	15
Amberg	Oshkosh	8
Amery	River Falls	24
Amherst	Stevens Point	15
Antigo	Stevens Point	23
Appleton	Oshkosh	6
Arcadia	La Crosse	24
Arena	Whitewater	24
Argyle	Platteville	16
Arkansaw	Eau Claire	23
Ashland	Superior	18
Athens	Stevens Point	23
Auburndale	Stevens Point	22
Augusta	Eau Claire	24
Bagley	Platteville	16
Baldwin	River Falls	24
Balsam Lake	River Falls	16
Bangor	La Crosse	24
Baraboo	Whitewater	22
Barneveld	Platteville	17
Barron	Eau Claire	23
Bayfield	Superior	18
Bear Creek	Oshkosh	16
Beaver Dam	Milwaukee	23
Beaver Dam Wayland Academy	Milwaukee	5
Belmont	Platteville	20
Beloit	Whitewater	24
Benton	Platteville	18
Berlin	Oshkosh	24
Birnamwood	Stevens Point	20
Black Earth	Whitewater	24
Black River Falls	La Crosse	16
Blair	La Crosse	24
Blanchardville	Platteville	21
Bloomer	Eau Claire	24
Bloomington	Platteville	20
Blue River	Platteville	18
Bonduel	Oshkosh	10

<i>School</i>	<i>District</i>	<i>No. Years Registered</i>
Boscobel	Platteville	23
Bowler	Stevens Point	12
Boyceville	River Falls	23
Brillion	Oshkosh	22
Brodhead	Whitewater	24
Brooklyn	Platteville	9
Bruce	Eau Claire	24
Brussels	Oshkosh	13
Burlington	Whitewater	7
Butternut	Superior	19
Cadott	Eau Claire	20
Cambria	Whitewater	24
Cambridge	Whitewater	24
Cameron	Eau Claire	8
Campbellsport	Oshkosh	22
Camp Douglas	La Crosse	23
Casco	Oshkosh	23
Cashton	La Crosse	24
Cassville	Platteville	15
Cazenovia	Platteville	21
Cedarburg	Milwaukee	24
Cedar Grove	Milwaukee	12
Centuria	River Falls	17
Chetek	Eau Claire	24
Chilton	Milwaukee	22
Chippewa Falls Junior	Eau Claire	3
Chippewa Falls Senior	Eau Claire	24
Chippewa Falls McDonell	Eau Claire	4
Clayton	River Falls	24
Clear Lake	River Falls	24
Clinton	Whitewater	20
Clintonville	Oshkosh	23
Cobb	Platteville	10
Cochrane	La Crosse	24
Colby	Stevens Point	24
Coleman	Oshkosh	20
Columbus	Whitewater	24
Crandon	Oshkosh	22
Crivitz	Oshkosh	24
Cudahy	Milwaukee	22
Cumberland	Eau Claire	24
Darien	Whitewater	21
Darlington	Platteville	22
Deerfield	Whitewater	24
De Forest	Whitewater	13
Delavan	Whitewater	24
Denmark	Oshkosh	16

<i>School</i>	<i>District</i>	<i>No. Years Registered</i>
De Pere	Oshkosh	24
Dodgeville	Platteville	24
Dorchester	Stevens Point	19
Draper P. O. Loretta	Eau Claire	20
Drummond	Superior	24
Durand	Eau Claire	24
Eagle River	Oshkosh	24
East Troy	Whitewater	6
Eau Claire	Eau Claire	24
Eau Claire St. Patrick	Eau Claire	5
Edgar	Stevens Point	23
Edgerton	Whitewater	24
Eleva-Strum	Eau Claire	11
Elkhart Lake	Milwaukee	12
Elkhorn	Whitewater	24
Elk Mound	Eau Claire	24
Ellsworth	River Falls	24
Elmwood	River Falls	14
Elroy	La Crosse	24
Endeavor	Stevens Point	16
Fairchild	Eau Claire	24
Fall River	Whitewater	18
Fennimore	Platteville	22
Fifield	Superior	2
Fish Creek	Oshkosh	11
Fort Atkinson	Whitewater	24
Fountain City	La Crosse	23
Fox Lake	Whitewater	18
Frederic	River Falls	21
Freedom P. O. Kaukauna	Oshkosh	17
Galesville	La Crosse	23
Gays Mills	La Crosse	24
Genoa City	Whitewater	9
Gillett	Oshkosh	22
Gilmanton	Eau Claire	24
Glenbeulah	Milwaukee	17
Glenwood City	River Falls	24
Glidden	Superior	24
Goodman	Oshkosh	20
Grafton	Milwaukee	23
Granton	Stevens Point	24
Grantsburg	River Falls	24
Green Bay West	Oshkosh	2
Greenwood	Stevens Point	24
Gresham	Stevens Point	11
Hammond	River Falls	24
Hartford	Milwaukee	24

<i>School</i>	<i>District</i>	<i>No. Years Registered</i>
Hartland	Whitewater	15
Hawkins	Superior	16
Hayward	Superior	20
Highland	Platteville	18
Hilbert	Oshkosh	22
Hillsboro	La Crosse	23
Hixton	La Crosse	20
Holcombe	Eau Claire	23
Hollandale	Platteville	20
Holmen	La Crosse	22
Horicon	Milwaukee	24
Hortonville	Oshkosh	18
Howards Grove P. O. Sheboygan	Milwaukee	11
Hudson	River Falls	24
Humbird	Eau Claire	24
Hurley	Superior	23
Hustisford	Whitewater	21
Independence	La Crosse	21
Ingram P. O. Glen Flora	Eau Claire	14
Iola	Stevens Point	13
Iron Belt	Superior	17
Iron River	Superior	11
Ithaca P. O. Richland Center	Platteville	19
Janesville	Whitewater	8
Jefferson	Whitewater	24
Johnson Creek	Whitewater	14
Juda	Platteville	19
Juneau	Whitewater	24
Kaukauna	Oshkosh	24
Kendall	La Crosse	24
Kenosha	Milwaukee	24
Kewaskum	Oshkosh	22
Kewaunee	Oshkosh	24
Kiel	Milwaukee	23
Kimberly	Oshkosh	21
Kohler	Milwaukee	23
La Crosse Aquinas	La Crosse	7
Ladysmith	Eau Claire	24
La Farge	La Crosse	23
Lake Geneva	Whitewater	20
Lake Mills	Whitewater	9
Lancaster	Platteville	24
Laona	Oshkosh	24
Lena	Oshkosh	21
Lime Ridge	Platteville	12
Linden	Platteville	10
Little Chute	Oshkosh	3

<i>School</i>	<i>District</i>	<i>No. Years Registered</i>
Livingston	Platteville	20
Lodi	Whitewater	24
Lomira	Oshkosh	21
Lone Rock	Platteville	17
Loyal	Stevens Point	24
Luck	River Falls	24
Luxemburg	Oshkosh	24
Madison East	Whitewater	18
Madison Wis. High	Whitewater	21
Maiden Rock	River Falls	9
Manawa	Stevens Point	24
Marathon	Stevens Point	22
Marinette	Oshkosh	20
Marinette School of Agric.	Oshkosh	15
Marion	Oshkosh	22
Markesan	Whitewater	16
Marshall	Whitewater	18
Marshfield Junior	Stevens Point	5
Marshfield Senior	Stevens Point	24
Mattoon	Stevens Point	19
Mauston	La Crosse	22
Mayville	Milwaukee	24
Mazomanie	Whitewater	23
Medford	Stevens Point	24
Mellen	Superior	20
Melrose	La Crosse	24
Menasha	Oshkosh	24
Menomonee Falls	Milwaukee	24
Menomonie	Eau Claire	24
Menomonie Dunn Co. Agric.	River Falls	24
Merrill	Stevens Point	24
Middleton	Whitewater	23
Milltown	River Falls	24
Milton	Whitewater	24
Milwaukee Concordia	Milwaukee	3
Milwaukee Marquette	Milwaukee	1
Milwaukee Messmer	Milwaukee	7
Milwaukee Mercy	Milwaukee	2
Milwaukee North Division	Milwaukee	13
Milwaukee Notre Dame	Milwaukee	2
Milwaukee Riverside	Milwaukee	18
Mindoro	La Crosse	21
Mineral Point	Platteville	23
Minocqua	Superior	23
Mishicot	Oshkosh	17
Mondovi	Eau Claire	23
Monroe	Whitewater	24

<i>School</i>	<i>District</i>	<i>No. Years Registered</i>
Montello	Stevens Point	23
Montfort	Platteville	13
Monticello	Platteville	18
Mosinee	Stevens Point	24
Mount Hope	Platteville	14
Mount Horeb	Platteville	23
Muscoda	Platteville	22
Necedah	La Crosse	22
Neenah	Oshkosh	22
Neillsville	Eau Claire	23
Nekoosa	Stevens Point	24
New Auburn	Eau Claire	24
New Glarus	Platteville	24
New Holstein	Milwaukee	24
New Lisbon	La Crosse	24
New London	Oshkosh	23
New Richmond	River Falls	24
Niagara	Oshkosh	18
North Fond du Lac	Oshkosh	24
Norwalk	La Crosse	22
Oakfield	Oshkosh	21
Oconomowoc	Milwaukee	19
Oconto	Oshkosh	24
Oconto Falls	Oshkosh	24
Omro	Stevens Point	4
Onalaska	La Crosse	24
Ondossagon P. O. Ashland	Superior	22
Ontario	La Crosse	24
Oostburg	Milwaukee	21
Oregon	Whitewater	24
Oregon Oakwood	Whitewater	7
Orfordville	Platteville	15
Osseo	Eau Claire	24
Owen	Eau Claire	18
Oxford	Stevens Point	23
Palmyra	Whitewater	16
Pardeeville	Whitewater	20
Park Falls	Superior	24
Patch Grove	Platteville	21
Pembine	Oshkosh	9
Pepin	Eau Claire	22
Peshigo	Oshkosh	19
Pewaukee	Whitewater	14
Phillips	Superior	24
Pittsville	Stevens Point	18
Plainfield	Stevens Point	22
Platteville	Platteville	21

<i>School</i>	<i>District</i>	<i>No. Years Registered</i>
Plum City	River Falls	7
Plymouth	Milwaukee	24
Portage	Whitewater	23
Port Edwards	Stevens Point	18
Port Washington	Milwaukee	24
Port Wing	Superior	10
Potosi	Platteville	21
Poynette	Whitewater	22
Prairie du Chien	Platteville	23
Prairie du Chien Champion	Platteville	5
Prairie du Chien St. Mary's	Platteville	1
Prairie du Sac	Whitewater	24
Prentice	Superior	24
Prescott	River Falls	23
Princeton	Oshkosh	24
Pulaski	Oshkosh	24
Racine Horlick	Milwaukee	7
Racine Washington Park	Milwaukee	8
Randolph	Whitewater	23
Random Lake	Milwaukee	24
Readstown	La Crosse	17
Reedsburg	Whitewater	24
Rewey	Platteville	12
Rhineland	Stevens Point	22
Rib Lake	Stevens Point	24
Rice Lake	Eau Claire	24
Richland Center	La Crosse	24
Ridgeway	Platteville	14
Rio	Whitewater	22
Ripon	Oshkosh	24
River Falls	River Falls	24
Rosendale	Oshkosh	22
Rosholt	Stevens Point	17
Sauk City	Whitewater	24
Scandinavia	Stevens Point	16
Seneca	La Crosse	22
Sevastopol P. O. Sturgeon Bay	Oshkosh	19
Seymour	Oshkosh	24
Sharon	Whitewater	19
Shawano	Oshkosh	24
Sheboygan Central	Milwaukee	22
Sheboygan North	Milwaukee	10
Sheboygan Falls	Milwaukee	24
Shiocton	Oshkosh	23
Shorewood	Milwaukee	1
Shullsburg	Platteville	20
Siren	River Falls	12

<i>School</i>	<i>District</i>	<i>No. Years Registered</i>
Slinger	Whitewater	19
Soldiers Grove	La Crosse	24
Somerseset	River Falls	23
South Milwaukee	Milwaukee	23
South Wayne	Platteville	15
Sparta	La Crosse	24
Spencer	Stevens Point	24
Spooner	Eau Claire	23
Spring Green	Whitewater	22
Spring Valley	River Falls	24
Stanley	Eau Claire	23
St. Croix Falls	River Falls	20
Stevens Point	Stevens Point	24
Stockbridge	Oshkosh	10
Stoughton	Whitewater	24
Stratford	Stevens Point	20
Sun Prairie	Whitewater	21
Superior Cathedral	Superior	1
Superior Central	Superior	24
Superior East	Superior	23
Suring	Oshkosh	18
Taylor	La Crosse	20
Theresa	Milwaukee	2
Thorp	Eau Claire	24
Tigerton	Stevens Point	20
Tomah	La Crosse	24
Tomahawk	Stevens Point	24
Tony	Superior	19
Trempealeau	La Crosse	15
Tripoli	Superior	24
Turtle Lake	River Falls	19
Two Rivers	Oshkosh	22
Unity	Stevens Point	22
Valders	Oshkosh	23
Verona	Whitewater	24
Viola	La Crosse	24
Viroqua	La Crosse	24
Wabeno	Oshkosh	24
Waldo	Milwaukee	24
Walworth	Whitewater	16
Washburn	Superior	24
Waterford	Whitewater	7
Waterloo	Whitewater	9
Watertown	Whitewater	23
Waukesha	Milwaukee	22
Waunakee	Whitewater	23
Waupaca	Stevens Point	24

<i>School</i>	<i>District</i>	<i>No. Years Registered</i>
Waupun	Oshkosh	24
Wausau Junior	Stevens Point	6
Wausau Senior	Stevens Point	24
Wausaukee	Oshkosh	21
Wautoma	Stevens Point	24
Wauwatosa	Milwaukee	24
Wauzeka	La Crosse	22
Webster	River Falls	11
West Allis Central	Milwaukee	24
West Allis Nathan Hale	Milwaukee	8
West Bend	Milwaukee	24
Westboro	Stevens Point	22
Westby	La Crosse	24
Westfield	Stevens Point	24
West Lima	La Crosse	18
West Milwaukee	Milwaukee	19
West Salem	La Crosse	24
Weyauwega	Stevens Point	22
Weyerhauser	Eau Claire	13
Whitefish Bay	Milwaukee	7
Whitehall	La Crosse	21
White Lake	Oshkosh	21
Whitewater City High	Whitewater	24
Whitewater College High	Whitewater	24
Wild Rose	Stevens Point	24
Wilmot	Whitewater	8
Wilton	La Crosse	24
Winneconne	Oshkosh	19
Winter	Superior	19
Wisconsin Rapids	Stevens Point	24
Withee	Eau Claire	19
Wittenberg	Stevens Point	24
Wonewoc	La Crosse	23
Woodruff	Superior	10
Woodville	River Falls	23
Wrightstown	Oshkosh	23

FOR THE RECORD

YEARLY RECORD OF MEMBERSHIP

Year	No. of Schools	Year	No. of Schools
1925-26	286	1937-38	388
1926-27	304	1938-39	395
1927-28	312	1939-40	395
1928-29	338	1940-41	393
1929-30	358	1941-42	391
1930-31	375	1942-43	349
1931-32	382	1943-44	342
1932-33	363	1944-45	349
1933-34	379	1945-46	365
1934-35	394	1946-47	390
1935-36	390	1947-48	407
1936-37	384	1948-49	410

Certificates of Merit—given for inter-school competition

The following number of certificates of merit were awarded for the year 1948-49.

Drama	338
Debate	309
Oration	542
Declamation	987
Extempore Reading	388
Extempore Speaking	215
Four-Minute Speech	180
Totals	2,959
No. of schools	254

PAST RECORDS

Year	No. Certificates Sent to	Schools
1943-44	1021	161
1944-45	1650	213
1945-46	3201	283
1946-47	3785	345
1947-48	2631	285
1948-49	2959	254

SCHOOLS GIVEN "A" RATINGS IN STATE DRAMA CONTESTS
SINCE 1942-43

Year	
1942-43	Shawano, Milwaukee Riverside
1943-44	Milwaukee Riverside, Black River Falls, Wauwatosa
1944-45	Milwaukee Riverside, Shawano, Wauwatosa
1945-46	Montello, Black River Falls, La Crosse Aquinas, Delavan
1946-47	Wauwatosa, Shawano
1947-48	La Crosse Aquinas, Plymouth, Shawano
1948-49	Mayville, Milwaukee Marquette, Muscoda, Waupun

STATE DEBATE CHAMPIONS SINCE 1941-42

1941-42	Chippewa Falls and West Bend
1942-43	New Richmond
1943-44	Kenosha
1944-45	Two Rivers
1945-46	Eau Claire
1946-47	Eau Claire
1947-48	Eau Claire and Port Washington
1948-49	Milwaukee Concordia, Eau Claire St. Patrick's, Sheboygan Central

EXTENT OF PARTICIPATION 1948-49

Drama

140 schools	checked drama on the registration cards
48 schools	participated in district drama contests
20 schools	participated in sectional drama contests
12 schools	participated in state drama contest

Debate

124 schools	checked debate on the registration cards
62 schools	participated in district debate contests
44 schools	participated in sectional debate contests
18 schools	participated in state debate contest

Speech

1515 contestants	from 349 schools participated in the district speech contests
459 contestants	from 205 schools participated in the state speech contest

Membership

410 schools	joined the Association
-------------	------------------------

Part IV

CORRELATING SPEECH AND DRAMA PROGRAMS

THE NATIONAL FORENSIC LEAGUE



Pat Schlaht, Sheboygan Central

Five Wisconsin students participated in the 1949 National Speech Tournament of the National Forensic League which was held at Longmont, Colorado.

Pat Schlaht of Sheboygan Central placed first in Oratorical Declamation. Arleigh Rhode of Kenosha was rated third in Humorous Declamation and Roger Axtell of Kenosha won a third place in Radio Announcing. Roger also lasted through three rounds of participation in Original oratory.

Richard Mathison of Eau Claire participated in Extempore Speaking, (three rounds) and Radio Announcing (two rounds). Violet Jonanson of Kenosha participated in four rounds of Dramatic Declamation competition.

We salute these young men and women and their able coaches, John D. Davies and Arnold E. Melzer, for representing Wisconsin so ably in national competition.

Membership in the League is open to any high school carrying an above average program of interscholastic speech work. Details about the National Forensic League may be obtained from Mr. Bruno Jacob, Secretary, National Forensic League, Ripon, Wis.

THE AMERICAN LEGION HIGH SCHOOL ORATORICAL CONTEST

Edmund Kersten, of Campion High School, Prairie du Chien, won first place in the Wisconsin Division of the American Legion High School Oratorical Contest and went on to reach the semi-finals in the national contest held at Fort Wayne, Indiana. Others reaching the final contest in Wisconsin were Leo Joyce, St. Francis Minor Seminary, Milwaukee; Violet Dortman, Park Falls High School; and Kent Herath, Wausau High School.

For the last twelve years the American Legion in Wisconsin has sponsored oratorical contests for students in the ninth to twelfth grades. The orations must be on some phase of the Constitution of the United States and they should give emphasis to the attendant duties and obligations of a citizen to our government.

Full instructions and rules, including sample titles are distributed to all Legion posts each year, and may also be obtained by writing to Department Headquarters, The American Legion, 794 Jefferson Street, Milwaukee.

A series of contests usually are held each year beginning in the eleven Legion districts of the state and ending with a state final of four contestants. These contests usually come a short time ahead of corresponding contests of the Wisconsin High School Forensic Association.

The winner of the state final represents Wisconsin in a series of national contests leading up to a national final which is usually held at some place of historical importance within the United States. Medals and awards are given to both state and national winners. Travel expenses are furnished to national contestants. The highest national award is a \$4000 scholarship.

FUTURE FARMERS OF AMERICA PUBLIC SPEAKING CONTEST

Lowell Saxton, speaking on "Food or Famine", won The Wisconsin Future Farmers of America Public Speaking Contest for 1949 and represented the state in the North Central Regional F. F. A. Contest which was held at Madison, Wisconsin. Lowell, who attended Dunn County Agricultural School at Menomonie, Wisconsin, was one of thirty-two district winners and five sectional winners. Other sectional winners were Gilbert Lilly of Barron, Ardo Synstby of Westby, James Fontaine of Algoma, and Jim Lyons of Rochester.

All schools which have a department of Vocational Agriculture are eligible to participate in the public speaking contest which is sponsored annually by the FFA. The contest is for boys only and their speech must be on an agricultural subject.

NATIONAL THESPIAN SOCIETY

Some of the high schools in the state have affiliated their dramatics groups with the National Thespian Society. This organization of teachers and students is devoted to the advancement of dramatic arts in secondary schools. It publishes the magazine, *Dramatics* referred to on page ----. The Society serves more or less as the coordinator of dramatic work throughout the high schools of the country. For further information about this worth-while organization write to Mr. Ernest Bavely, National Thespian Society, College Hill Station, Cincinnati 24, Ohio.