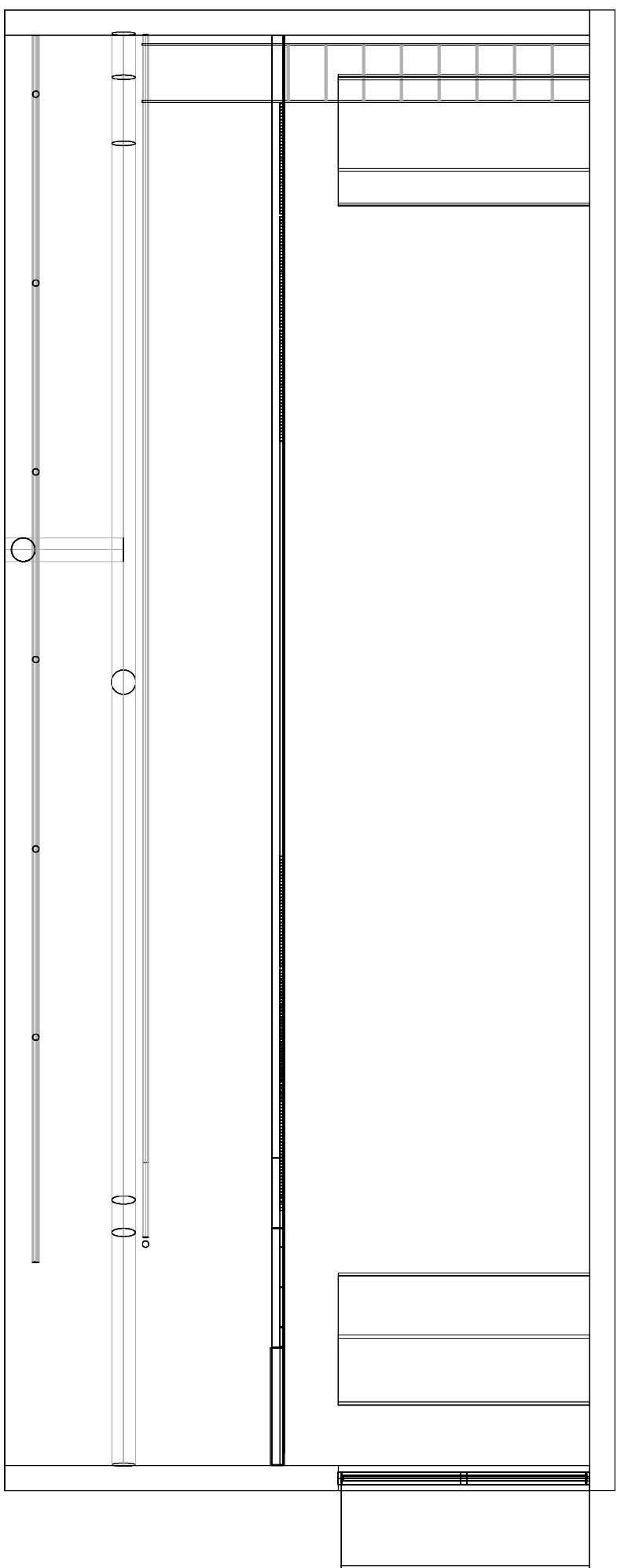
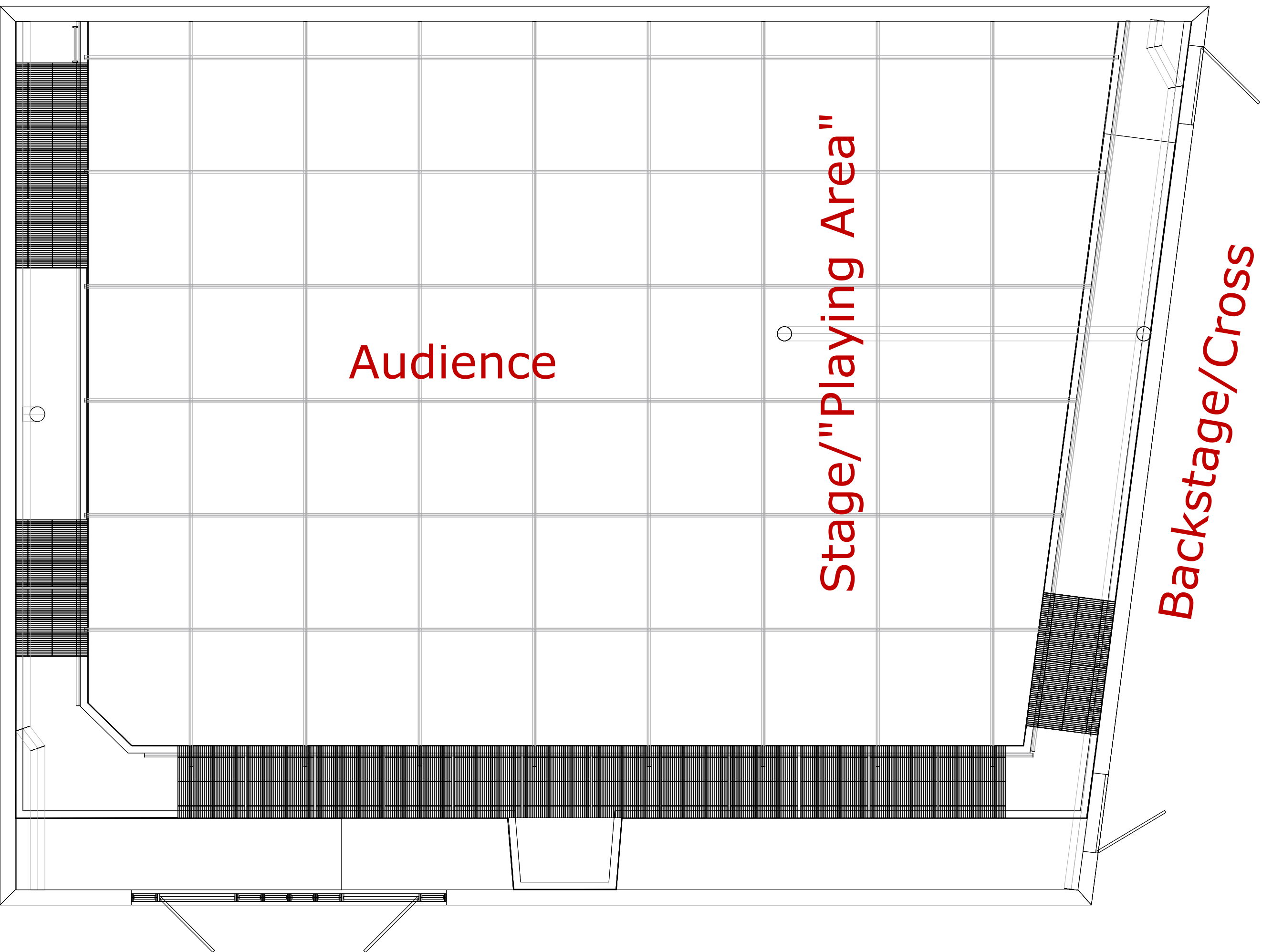
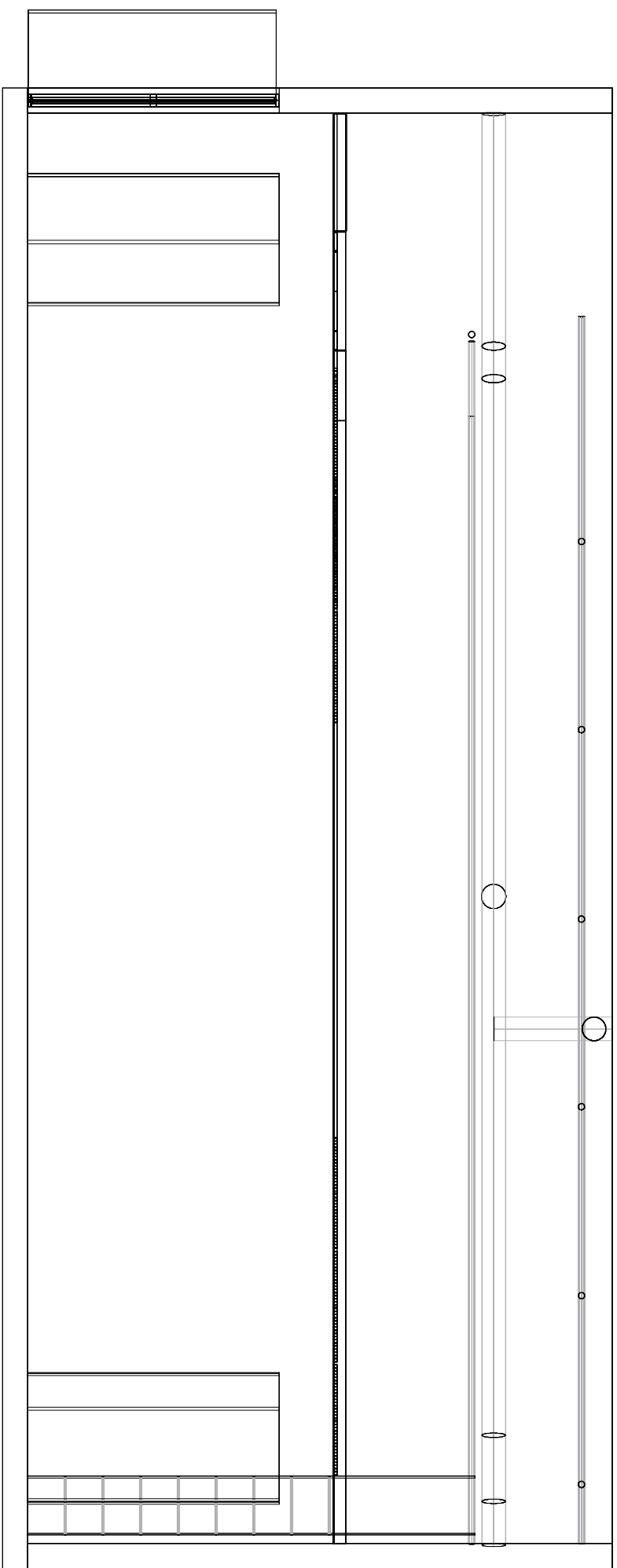
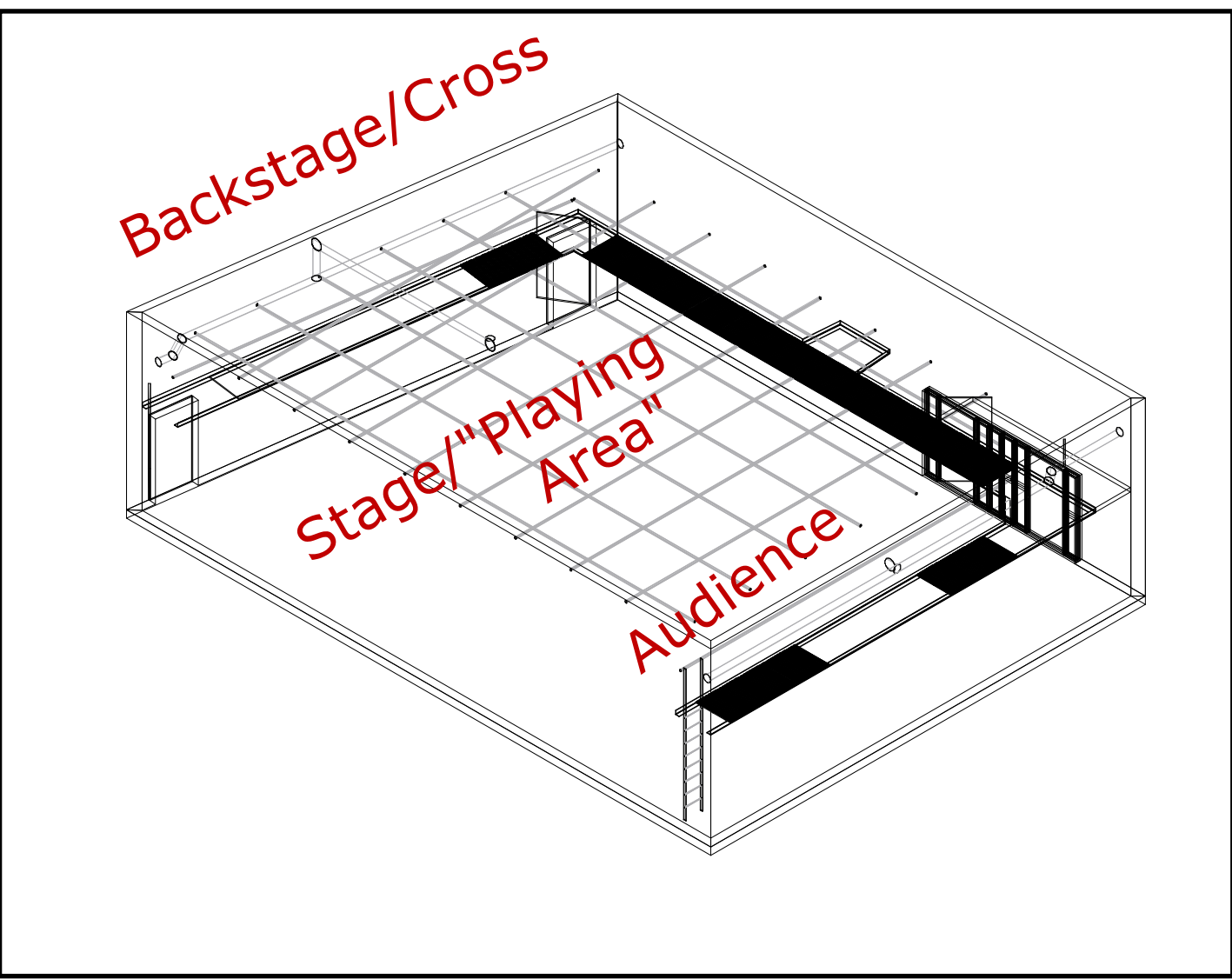
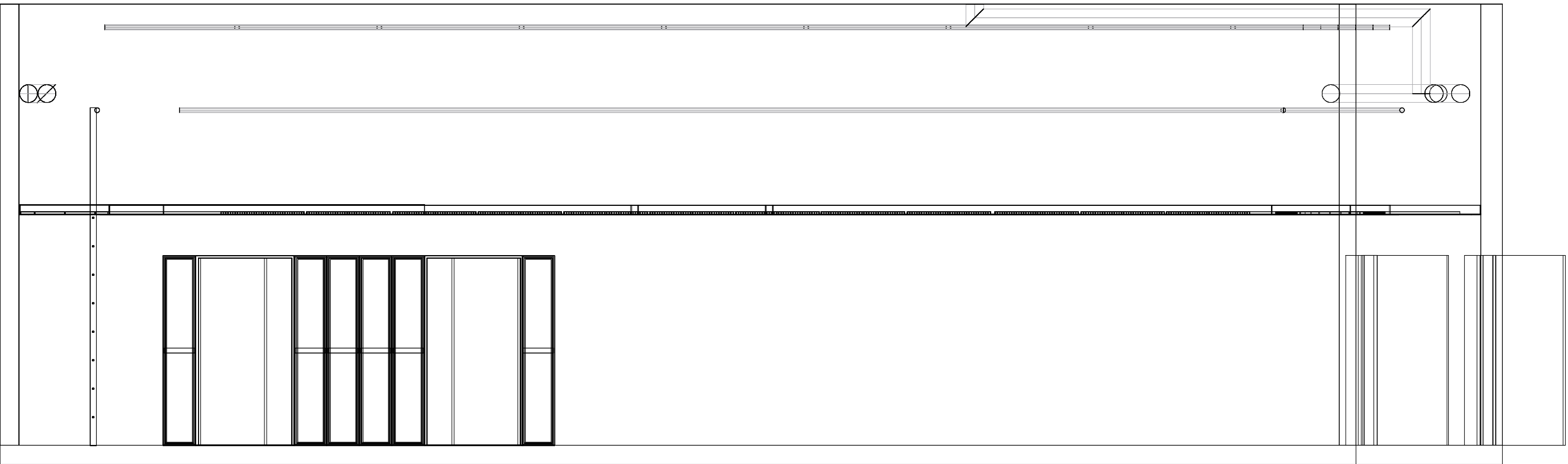


CATWALK LEVEL +98 3/16" (+/- 1/2")
CATWALK GRATING AT +98 3/16
CONSTRUCTED FROM 1"X 1/8" STEEL BAR STOCK
ON EDGE WITH INTERMEDIATE SUPPORT

CATWALK HEIGHT:
+8' 1-3/16" (+/- 1/2") TO LOWEST POINT
+8' 2-3/16" (+/- 1/2") TO TOP OF GRATING

GRID HEIGHT:
+14' 6-1/8" (+/- 1") TO CENTER OF LOWER PIPE
+14' 7-1/8" (+/- 1") TO CENTER OF UPPER PIPE

CATWALK SUPPORT PIPES (1-1/2" ID)
FROM CEILING TERMINATES AT +97 3/8
WELDED TO 4"X4" ANGLE STEEL GRATING SEAT
SOME CATWALK GRATING REMOVABLE FOR ACCESS



UNIVERSITY of WISCONSIN
MILWAUKEE
PECK SCHOOL OF
THE ARTS

UWM PECK SCHOOL OF THE ARTS DEPARTMENT OF THEATRE PRESENTS:

T6 STUDIO THEATRE

COMPOSITE VIEWS

DESIGNED BY CAITLIN CONCANNON
DRAWN BY GUSE

ORIGINAL: 04/10/2019

REVISED:

SCALE: 1"=1'-0" OR AS NOTED

DRAWN: CHRISTOPHER GUSE

PLATE

01